

# NORTH SOMERSET LIFE

ISSUE 140 – SEPTEMBER/OCTOBER 2018

Made in  
North Somerset  
returns



ALSO

LEARNING  
FOR LIFE

See inside for the special pull-out



The logo consists of the lowercase letters 'm2' in white, set against a solid orange square background.

say hello to  
**metrobus**

experience a new,  
modern service  
from 3<sup>rd</sup> September

## Long Ashton P&R to City Centre

via Ashton Gate, SS Great Britain,  
Wapping Wharf, Temple Meads

**unlimited travel £4 a day**  
including all First buses  
in Bristol Inner Zone

[metrobusbristol.co.uk](http://metrobusbristol.co.uk)

ride metrobus 

# Dear reader,



In the last issue I said that I hoped for a good summer. For a few weeks we got scorching weather that was great for tourism, but, as they say, be careful what you wish for. We also had melting road surfaces and very dry open spaces that had to be cut back before they became a fire hazard. Lessons to be learnt with our contractors, as many countries in Southern Europe have roads that don't melt in those temperatures every year.

About eight or nine years ago, all councils across the country were told to expect real cutbacks for many years, probably a decade and we all had some indication of what that meant in terms of funding. For North Somerset it meant about £110m of savings to be found. It seemed totally impossible at the time, as well as unfair, because some councils were getting so much more from central government to start with. Even today some wealthy London boroughs get far more than councils in the West. We also pointed out that it would be dangerous as the South West has a high level of older, retired residents that could need increasing levels of either health or social care in the future. However, it was clear that the Government had made its decision and the financial situation of the country meant there was no more money. No point moaning, get on with it.

So we did. We cut costs, reduced offices, council staff found better ways of doing things and we work better with partners. Yes there have been problems, with rising demand for care services and the new waste collection service taking longer than expected to work properly. But North Somerset has just about made its savings quota, is living within its budget and we are now able to invest in local property that will provide additional income for residents' services, protect local facilities and give future generations a valuable asset.

I mention this again now, because of the apparent situation of Northamptonshire County Council. A recent report shows they have been spending money they didn't have and are now facing a huge problem. They have to cut £millions from their budget immediately but that could mean cutting out services they have to provide by law. This will give Government a bigger problem, as more councils fail to set a viable budget and I know of some that are very near that position. Does Government give them more money? That would look like rewarding those who haven't made the difficult decisions and penalising those communities who have had to deal with reducing services. I have heard the suggestion that councils should be able to put up Council Tax by whatever they need, as they used to. I think that would be disastrous, that would lead to increased costs, no incentive to be efficient and no regard for people's ability to pay. Not another government review, just decisions on fairer funding which you have been talking about for years and stop making us give permissions for levels of housing we don't need and couldn't afford to provide services for.

Councillor Nigel Ashton, Leader of North Somerset Council

# Contents

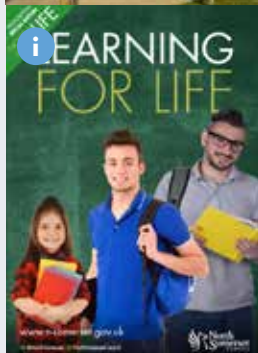
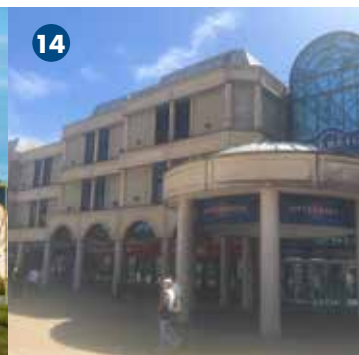
- 4 News update
- 10 Building North Somerset's future
- 14 Investment in major High Street site
- 18 Walk – Potter around Pill

## Learning For Life education special

- ii – Lifelong learning and early years
- iv – Preparing for school
- vi – Work opportunities for young people
- viii – Post-16 choices
- x – Community learning courses

- 22 Made in North Somerset is back
- 28 Recycling update
- 30 Could you be a carer?
- 35 Contact details

Front page photograph is of Court House Farm in Portishead, where this year's **Made in North Somerset** Showcase is being held. **See page 22** for details.



This publication is available in large print, Braille or audio formats on request. Help is also available for people who require council information in languages other than English. Life editor: 01275 884 139

# Remembering the fallen

In the months leading up to the centenary of the end of the Great War, activities are taking place locally to remember the fallen.

Three life-size silhouettes of soldiers are now standing on Clevedon Pier as a poignant tribute to the men who lost their lives.

More than 200 men from Clevedon died in the war so in the 100 days leading up to Sunday 11 November, two silhouettes are being 'named' each day, with a short biography of each casualty.

The third silhouette has been left unnamed, for the hundreds of individuals who survived and returned to the town, but with physical injuries or mental trauma.

Marie-Dominique @ Just Us Photography



Research for the There But Not There project was carried out by Clevedon Civic Society's history group, and information from the late Rob Campbell's book, *Clevedon's Own – The Great War 1914-1918*.

In Portishead, a virtual book of remembrance has been set up to commemorate the centenary of the armistice.

Every soldier who died in battle is named, along with a short biography, to give a greater understanding of the human tragedy that took place. The online record can be accessed through Portishead Town Council's website, under the Discover Portishead tab.

The town council hopes to add to this online record and include all those who have lost their lives in war or in public service, whether military or civil, from 1914 to the present day.

Anyone with any corrections or additional information can contact Cllr Don Cameron on [don.cameron@portishead.gov.uk](mailto:don.cameron@portishead.gov.uk)

Look out for details of other events marking the centenary of the Armistice in the winter edition of *Life*.

[www.clevedonpier.co.uk](http://www.clevedonpier.co.uk) • [www.portishead.gov.uk](http://www.portishead.gov.uk)

## Read well to stay well



Self-help books providing information on common mental health conditions are now available in North Somerset libraries.

The collection, Reading Well for Mental Health, is designed to help people understand and manage their health and wellbeing.

Titles cover a range of conditions including obsessions, anxiety and panic attacks, depression, bereavement, phobias and eating disorders.

They have been carefully chosen by health professionals and people living with the conditions.

Other health and wellbeing collections available include reading well for dementia, for young people, and for long-term conditions.

Reservations are free of charge.



[www.n-somerset.gov.uk/libraries](http://www.n-somerset.gov.uk/libraries)

# Time to apply for school places

Now is the time to apply for school places if your child is due to start school or transfer to a new one next year.

You can apply online from 12 September until 31 October for children who are in their final year of primary or junior school and are due to transfer to secondary school in September 2019.

## For children starting primary or junior school in September 2019:

Applications open 12 September  
Applications close 15 January 2019

Applications also open on 12 September for children born between 1 September 2014 and 31 August 2015 who are due to start school in September 2019; as well as any child now in their last year of infant school and due to transfer to a junior school.

The closing date for these applications is 15 January 2019. It's very important to apply by the closing date

## For children starting secondary school in September 2019:

Applications open 12 September  
Applications close 31 October

otherwise you may have less chance of being offered your preferred school.

Parents can name up to three preferences and can apply for schools both within and outside North Somerset.



Apply online at [www.n-somerset.gov.uk/admissions](http://www.n-somerset.gov.uk/admissions)

Paper forms available on request. Contact 01275 884 078 / 014, or [admissions@n-somerset.gov.uk](mailto:admissions@n-somerset.gov.uk)



## Tackling mental health stigma

A number of events are planned next month to tackle the stigma associated with mental health.

Coinciding with World Mental Health Day on Wednesday 10 October, events include an early morning dip and a lantern parade along Clevedon's seafront, a mindfulness session on Clevedon Pier and a talk about the history of mental health locally.

The events are being organised by North Somerset Council and Avon and Wiltshire Mental Health Partnership under the banner of Warriors of Wellbeing (WoW).

WoW aims to tackle the stigma of mental health through events and activities that improve wellbeing and in the last year has raised more than £3,000 for local mental health charities.

For details visit [www.facebook.com/warriorsofwellbeing](https://www.facebook.com/warriorsofwellbeing)



## Construction in Churchill for National Grid project

Work is now under way in Churchill as part of National Grid's upgrade of the South West's electricity infrastructure.

The new Hinkley Connection line will ensure the region continues to have reliable supplies of electricity into the future. There will not be any interruption to electricity supplies during the work and it's being carried out in a way which causes as little disruption as possible,

with all activity taking place between 7am and 7pm on weekdays only.

Modifications are being made to Churchill substation to connect it to the nearby overhead lines. In North Somerset, National Grid's work continues until late 2025. It extends from Churchill, past Sandford, through the Mendips and up past Nailsea and Portishead.

Find out more at [www.hinkleyconnection.co.uk](http://www.hinkleyconnection.co.uk)



## Award-winning food and drink festival returns

Locally-produced food and drink can be enjoyed in Weston-super-Mare this month when a popular festival returns to town. eat:Weston returns to the Italian Gardens on **Saturday 22 September** with a large outdoor market of farmers' favourites plus global cuisines. The free event, supported by North Somerset Council and Weston BID, features a demo stage in the Sovereign Centre, sheep and tractors in the High Street and

family entertainment. Vegan, gluten free and vegetarian options will be available.

The festival, which runs from 9am to 5pm, is also 100 per cent single-use plastic free and all trader waste is fully compostable, as part of the SAS Cleaner Coastlines Campaign.



### Take time out

for more events across  
North Somerset turn to page 17

[www.eatfestivals.org](http://www.eatfestivals.org) • [eatweston](https://www.facebook.com/eatweston)

## Festival for people with disabilities

A festival is taking place in Portishead this month for people with disabilities to try new things, have fun and make new friendships.

The Festival of Life and Living is open to people of any age and interests to discover a world of accessible possibilities in North Somerset.

It takes place from 11am to 3pm at Portishead Youth Centre, in Harbour Road, on Saturday 22 September and features music, games, fitness and the support available for daily living.

It is being organised by WECIL, the West of England Centre for Independent Living, which supports disabled people with a wide range of services.

[www.wecil.co.uk](http://www.wecil.co.uk)

Properties  
from £175,000

## Retire and relax

In the heart of North Somerset is **Sandford Station**, a lively retirement village with a great community spirit. The excellent facilities and staff provide the perfect retirement lifestyle.

To find out more or book a place on an open day call **0117 919 4262**. Or visit our show home open every Thursday 10am-4pm.

[www.stmonicatrust.org.uk/villages/sandford-station](http://www.stmonicatrust.org.uk/villages/sandford-station)

Registered Charity 202151



St Monica Trust

# Theatre in Clevedon this autumn



Street performers and theatre fun are coming to Clevedon this autumn.

In September, enjoy dance on Clevedon's pier or a pop-up show in a pub...

## Sunday 9

Trinity Laban Conservatoire of Music and Dance 2pm and 3pm, Clevedon Pier. Free show but normal pier admission charges apply.  
[www.clevedonpier.co.uk](http://www.clevedonpier.co.uk)

## Saturday 22

One Lump or Two – Pocket Fluff (free street theatre) 2pm and 3.30pm, Queen's Square, Clevedon. Circus theatre for all ages.

## Touring pub show

Horses! Horses! – Wassail Theatre Company and Theatre Orchard, in association with Bristol Old Vic. A darkly comic tale about the loss of rural pubs and relationships.

A full line-up can also be seen at the Theatre Shop, in Queen's Square.

For tickets visit [www.theatreshop.org.uk](http://www.theatreshop.org.uk) or call 03336 663 366 (£1.50 booking fee applies)

Highlights include...

## Wednesday 19 September

Over the Wall Picking Apples  
Richard Crowe 7.30pm. A darkly comic look at someone with mental health issues. For ages 14+. £12

## Friday 5 and Saturday 6 October

Parlour Games – Sharp Teeth and the Wardrobe Theatre 7.30pm (and 2pm Sat matinee). A romp through British history. For ages 12+. £12.

## Saturday 13 October

Super Hamlet 64 Parody – Edward Day 7.30pm. A fast-paced re-telling of Shakespeare's play. For ages 10+. £12.

## Sunday 14 October

The Star Seekers – The Wardrobe Ensemble 2pm. A journey through space. For ages 3+. £8.



## New metrobus for fast ride into Bristol

Fast and frequent bus connections can now be taken from North Somerset to Bristol thanks to the launch of the new m2 metrobus service.

The new service, which launched on Monday 3 September, operates from Long Ashton park and ride into Bristol city centre.

It stops at Ashton Gate, the ss Great Britain and Wapping Wharf, before doing a loop around Temple Meads, Cabot Circus and the centre.

The m2 operates at least every 12 minutes, Monday to Saturday, and uses bus-only routes to beat the traffic.

This is the second metrobus route to launch and follows the successful m3, which runs from Emersons Green to Bristol city centre.

A day ticket, for metrobus and any First bus routes in the Bristol inner zone, costs £4.

Parking at Long Ashton park and ride is free but you must buy your metrobus ticket before boarding.

This can be done via the mTicket app, at an iPoint at the stops, with a Travelwest smartcard or at a payzone store.

[www.metrobusbristol.co.uk](http://www.metrobusbristol.co.uk)

## Weston-super-Mare gets Cleaner Coastline status

Weston-super-Mare is officially a Cleaner Coastline after achieving plastic-free status from Surfers Against Sewage.

The Weston Mercury launched its Cleaner Coastlines campaign in October, alongside Weston Chamber of Commerce.

The campaign was supported by North Somerset Council and Weston Town Council.

To achieve the status, 30 businesses had to get rid of at least three different single-use plastic items.

In total, 50 did just that while 20 others supported the campaign.

Weston-super-Mare is the 30th place in the UK to secure the accreditation and its population means it is the largest so far.

Turn to **page 28** for more information about recycling and reducing plastic pollution.

## Remember to register to vote

If you want to vote in next year's local elections you must register to vote. Electoral registration forms were sent out to households across North Somerset in August so remember to return yours.

You need to tell the council about any changes to your circumstances and confirm if nothing has changed.

This can be done by text, internet, telephone or post. Details are on the form.

Reminders will be sent to all non-responding properties. If you're not currently registered to vote, your name will not appear on the form.

Register online at [www.gov.uk/register-to-vote](http://www.gov.uk/register-to-vote)

Electoral services:  
01934 634 909

[electoral.services@n-somerset.gov.uk](mailto:electoral.services@n-somerset.gov.uk)



## Changes to housing legislation coming in

If you're a landlord or owner of a house in multiple occupation (HMO)\* you need to know about changes coming into effect next month.

From Monday 1 October, any landlord who rents out a property that is occupied by five or more unrelated people in two or more households must have an HMO licence.

Previously this licence was only needed if the building was at least three storeys high.

The rules are changing to include homes of any height, whether they are two-storey houses, bungalows or self-contained flats.

Landlords who fail to get a licence could face an unlimited fine.

\*HMOs are properties where different households are living and sharing facilities, such as a kitchen and/or a bathroom.

Find out more and apply online at [www.n-somerset.gov.uk/hmo](http://www.n-somerset.gov.uk/hmo)



*Early bird offer:*  
10 per cent off in September  
5 per cent off in October

## ALL INCLUSIVE FESTIVE PARTY NIGHTS

*at DoubleTree Bristol, Cadbury House, £49pp*

Includes a delicious three course festive meal and all the trimmings including unlimited drinks (draft beer, draft cider, house wine and draft soft drinks only).

Thursday 29th Nov  
Wednesday 5th Dec  
Thursday 6th Dec

Sunday 9th Dec  
Wednesday 12th Dec  
Thursday 13th Dec

Sunday 16th Dec  
Wednesday 19th Dec  
Thursday 20th Dec

01934 834 343 | [christmas@cadburyhouse.com](mailto:christmas@cadburyhouse.com) [www.cadburyhotelbristol.co.uk/christmas](http://www.cadburyhotelbristol.co.uk/christmas)



# Tour of Britain takes in North Somerset

World-class cyclists will be whizzing along the roads in North Somerset as Britain's premier road race sweeps the country.

Stage 3 of the OVO Energy Tour of Britain takes place on Tuesday 4 September and much of the 128km route is in our area.

The route enters North Somerset by the suspension bridge and passes through Leigh Woods, Failand, Tickenham, Clevedon Court, Kenn Moor Road to Yatton, Congresbury, Langford, then the A38 into Somerset.

After a short while it returns to North Somerset via Winford, the A38, Barrow Gurney, Flax Bourton, Long Ashton, Ashton

Court, Rownham Hill, then back over the suspension bridge in Bristol.

There are 120 riders taking part, in 20 teams of six riders.

North Somerset's section features a sprint through Yatton and a King of the Mountain challenge up Providence Lane in Long Ashton.

There will be rolling road closures in place along the route so please allow extra time for your journeys that day.

Inspired to get on your bike?  
Turn to **page 16**



For a route map and estimated timings visit [www.tourofbritain.co.uk](http://www.tourofbritain.co.uk)



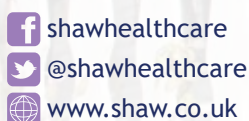
## Sycamore Lodge Nursing Home

Lodge Lane, Nailsea,  
North Somerset  
BS48 1LX

Home Manager:  
Caroline Carter

Call:  
01275 858 000

Email:  
[SycamoreLodge.Manager@Shaw.co.uk](mailto:SycamoreLodge.Manager@Shaw.co.uk)

A photograph of an elderly woman with short white hair and glasses, wearing a pink and white checkered shirt, standing next to a younger woman with long red hair wearing a blue and white polka-dot shirt. They are outdoors in front of a wooden building with a sign that reads 'Inspected and rated Good' and 'CareQuality Commission'. Another sign nearby says 'Respite & Long Term Care Options'.

We offer a complete pathway of dementia care, and now also have a new 18 bedded general nursing service on site. All with a dedicated caring staff team, creating a homely atmosphere for everyone.

- Nursing Dementia Care • General Nursing Care
- Day Care • Residential Dementia Care

# Building North Somerset's



Residents in North Somerset have another opportunity to help shape the future growth of the area.

New housing and jobs are needed across North Somerset to cater for its future population increase.

North Somerset is a popular place to live so there is a demand for new homes and jobs.

Richard Kent, head of development management at North Somerset Council, said: "We need to plan ahead for these homes because it is essential that infrastructure, such as new roads, schools, parks and health services, is delivered alongside the housing."

The overall number of houses, jobs and infrastructure needed across the West of England to 2036 and the main locations for strategic growth are contained in the Joint Spatial Plan.

Following previous consultations, this document is currently being examined by an independent inspector with public hearings anticipated next May.

While the Joint Spatial Plan will provide the overall planning context, detailed proposals will be brought forward in a new Local Plan.

This is at an early stage of development but will be key to shaping the approach to a wide range

of issues such as the role of different settlements, settlement boundaries, new employment opportunities and the future of our town centres.

As part of this process the council is inviting residents to give their opinions on a document it has produced looking at the issues raised by the planned housing growth and the options available to address these issues.

About 25,000 new homes are needed over the next 20 years. Just under 14,000 are already earmarked, so just over 11,000 still need to be allocated.

The majority of the proposed new homes are in two new separate villages north of Banwell and Langford, and as extensions to Nailsea and Backwell. These 'strategic development locations' will also include new facilities and job opportunities.

It is also proposed to make better use of land in towns, primarily Weston-super-Mare, which will have about 1,000 new homes on brownfield land over and above what's already planned.

Sites for a further 1,000 homes are also needed around the rest of North Somerset.

When planning for new housing, the council must consider...



# future



- the need to protect landscapes, the natural environment, historic buildings and places
- how close a community is to services, facilities and jobs
- opportunities to create more jobs and support local businesses
- whether additional homes may support local schools and services
- traffic on roads and getting around
- the energy efficiency of the new homes and opportunities for renewable energy
- high-quality design and place making.



## How you can get involved

Tell us what you think of the issues that this new growth will bring and the options available to address them.

You can read the Local Plan 2036 Issues and Options document and make comments on the council's website at [www.n-somerset.gov.uk/localplan2036](http://www.n-somerset.gov.uk/localplan2036).

The document is also available to view at the council offices at the Town Hall in Weston-super-Mare and Castlewood in Clevedon and at all North Somerset libraries.

There will be more opportunities to have your say on the future growth of the area over the coming months.

North Somerset Council is also developing its plans for future transport and infrastructure investment and will be consulting on the details of these in the near future.

Nov 2017 –  
Jan 2018

### generating ideas

The first thoughts on the four proposed new communities proposed in the Joint Spatial Plan

Sept – Dec 2018

### issues and options

Planning for the next 20 years across North Somerset, and further thoughts on the new and expanded communities

Summer 2019

### full plan consultation draft

Detailed policies and site allocations

Autumn/winter  
2019 – 2020

### final consultation and independent examination

Summer 2020

### local plan adopted

# Fostering teenagers keeps you on your toes



Foster carers play a vital role in helping teenagers who have experienced trauma and are unable to live at home.

**North Somerset Council is urgently seeking to recruit foster carers for children of all ages, but especially teenagers.**

Fostering a teenager can be one of the most rewarding experiences and those providing a home will share in the transitional period from child to young adult.

Society sometimes takes a dim view of teenagers. But this doesn't take into account the energetic, creative, funny, thoughtful and fun side of the teenage years.

*Life spoke to a 16-year-old boy currently living in foster care...*



**How did you feel when you first came into care?**

It was hard. It took a long time before I could start talking about what had happened to me but my carers let me work things out for myself. It took a few years to feel safe and realise no harm would come to me.

We still have occasional arguments but it's alright now because we understand each other.

**How did your carers make you feel better?**

They reassured me, told me I was safe and showed me the front door was locked at night. When I was younger they held my hand in public because I was afraid in big crowds.

We talked a lot and I learnt more words and started catching-up on schoolwork. They taught me to do my homework properly and I wanted to learn. As I got older I would sometimes complain or argue but came to understand that the quicker I did it, the longer I'd have for TV.

**Did you know?**

There are around 230 children at any one time looked after by foster carers.

North Somerset Council doesn't have enough carers and some children have to be placed in expensive, private foster care placements away from their home, schools and family.



## What are important qualities in a foster carer?

I think all carers should have empathy, to understand why the child acts in a certain way. It takes a long time for children to trust.

Carers need to teach a child right from wrong, and to talk to the child so they can learn to make their own opinions. It's really important my carers aren't critical or unkind about my parents. If they were, I would feel they didn't know me at all.

It's important for families to share their lives and interests.

## What advice would you give to a new foster carer?

Expect the unexpected and for things to feel unnatural to begin with. A child won't arrive with a big smile on their face so be patient. Don't hold a grudge and be willing to work things out, to have debates so the child learns to accept another point of view and how to disagree well. Maybe accept sometimes there is no right or wrong answer.



## How have foster carers made a difference to your life?

My carers helped me to catch-up at school and do well. They helped me mature, be a good loser and understand why some things are wrong.

I still make mistakes but now I can work things out. I also learnt to admit when I'm wrong.

I know how to help people now and if I see someone who needs my help, I can and want to help.

My carers helped me change my attitude and strive to do better. Now I push myself and have plans for my future.

## Want to foster?

Some foster carers have an age preference while others foster children of all ages.

In North Somerset it is possible to care for young people aged 16 and over while continuing to work through the Supported Lodgings scheme.

Potential foster carers need a spare bedroom, some experience of caring or working with children and a willingness to develop parenting skills and attend training.

North Somerset Council's fostering team is happy to chat to anyone who is interested. If you can't foster now, you might in the future.

To find out more about what it's like to be a foster carer visit [www.n-somerset.gov.uk/fostering](http://www.n-somerset.gov.uk/fostering) for a range of interviews.

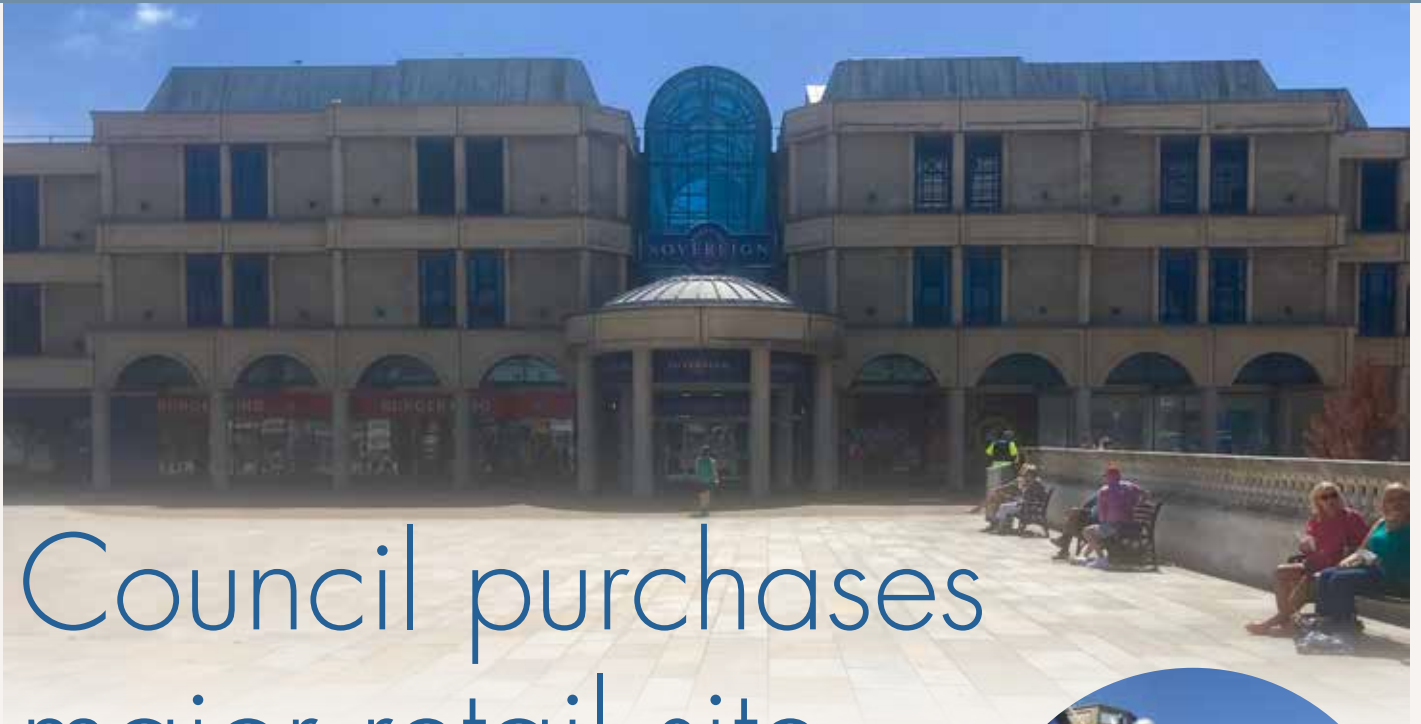
Come and find out more about fostering by having an informal chat with social workers and foster carers at the next coffee morning on Friday 7 September, from 10.30am-12.30pm, at Costa Coffee in Dolphin Square, Weston-super-Mare.

For more details call  
**01275 888 999** or visit  
[www.n-somerset.gov.uk/fostering](http://www.n-somerset.gov.uk/fostering)

 [fosteringnorthsomerset](https://www.facebook.com/fosteringnorthsomerset)

 [@FosteringNS](https://twitter.com/FosteringNS)





# Council purchases major retail site

Weston's Sovereign Shopping Centre has opened its doors under new management following the recent purchase of the key retail site by North Somerset Council.

The impressive rejuvenating plans for the Sovereign Centre will look to turn the venue into a modern, multi-use space with retail at its heart that will attract residents, businesses and tourists alike.

Malcolm Coe, head of finance and property at North Somerset Council, said: "As the traditional high street continues to change, the council needs to move with the times and invest in our local economy, community and business sectors.

"We will be exploring options around how a re-focused Sovereign Centre can add to the vibrancy of the town centre, encouraging local independents to take space, looking at family-focused activities and seeing whether other services could be operated from units in the centre as well as retail.

*"All this supports our vision for the town centre which focuses on living, learning and lifestyle."*

The purchase of the Sovereign Shopping Centre, which is part of the council's exciting commercial investment strategy, looks to generate £1m a year from the site, which will be put back into vital local services.

The purchase fits into the council's vision for local growth and regeneration.

The major expansion and development of Weston College, the construction of Dolphin Square leisure complex - coupled with planned housing growth and further business development - will continue to impact positively on the local economy and life choices of residents and visitors alike.



# Facelift for town centre road junction



Better visibility for drivers and more space for pedestrians and cyclists will be the benefits of a £700,000 upgrade to two Weston-super-Mare streets.

South Parade and Knightstone Road in Weston-super-Mare are set for a facelift this month thanks to the cash injection of £700,000.

The money is coming from the West of England Local Enterprise Partnership through the Local Growth Fund.

Further funding is provided through the Local Transport Plan.

Enhancements will include:

- a safer crossing point from Weston College to the town centre
- making the radius of the two corners of Knightstone Road and South Parade bigger
- increasing the pavements.

During the work, which is expected to take four months, drivers will still be able to access the roads.

There will be lane closures at times though, along with traffic lights and diversions.

It is likely that most of the road resurfacing will take place during twilight hours and overnight.



## Explore historic buildings

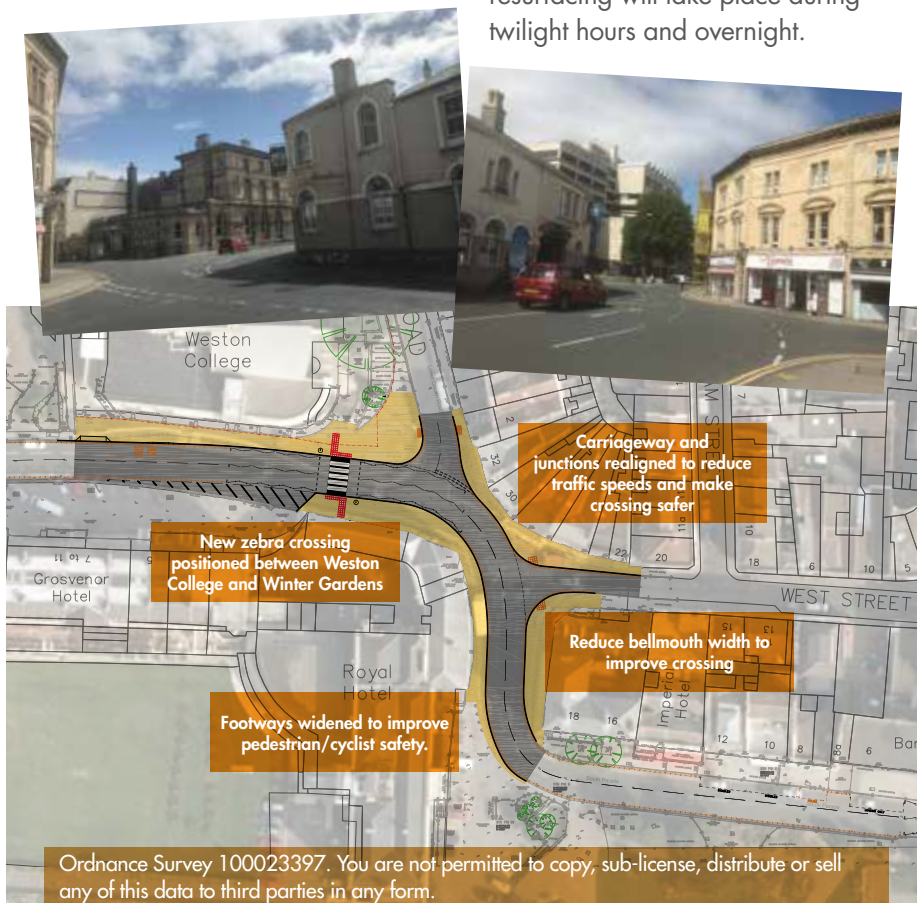
Step inside some historic buildings in North Somerset and go behind-the-scenes during this year's Heritage Open Days.

The national scheme runs over two weekends, from Thursday 6 to Sunday 9 September and from Thursday 13 to Sunday 16 September.

Venues in Weston-super-Mare, Clevedon and the Gordano area will be opening their doors so people can see places they may have never visited before.

Go behind-the-scenes at the Curzon cinema in Clevedon, spend a day exploring churches and places of worship, or visit the old magistrates court in Weston-super-Mare.

To find venues taking part and opening times visit [www.heritageopendays.org.uk/visiting](http://www.heritageopendays.org.uk/visiting)



[www.n-somerset.gov.uk/westonvision](http://www.n-somerset.gov.uk/westonvision)



# Be inspired to cycle – and get your bike registered

**If seeing the world's elite cyclists racing across North Somerset has inspired you to get back in the saddle, visit a free bike event taking place this autumn.**

Over the coming weeks, free bike security and information roadshows will be held at train stations across North Somerset for people to get their bike registered as well as receive advice and materials about local cycle routes.

Thanks to the Department for Transport's Access Fund for Sustainable Travel, marking kits – which usually retail for £19.99 – are being offered for free at the roadshows.

The procedure involves the bike being etched with a permanent ID and a tamper-proof sticker is put on, to warn potential thieves the bike is marked.

Cycle and personal details are then registered on the national bike database used by the police.

The free roadshows, run by North Somerset Council and Travelwest, will be at these train stations this autumn, from 3-6pm:

- **Monday 29 October** – Yatton
- **Tuesday 30 October** – Worle
- **Wednesday 31 October** – Nailsea and Backwell
- **Thursday 1 November** – Weston-super-Mare



## Travel grant funding scheme has re-opened

Businesses, schools and community organisations in North Somerset can now apply for funding to make it easier for their staff, students or visitors to travel sustainably.

Grants of up to £3,000 are available for schemes which encourage people to leave their cars at home – whether by cycling, walking, or car sharing.

The grants, funded by the Department for Transport's Access Fund for Sustainable Travel, must be 50:50 match-funded by the organisation.

Successful local applications this year include Coco's Canteen enhancing its outside space with plant locks; Priory Learning Trust purchasing electric pool bikes for its schools, and Little Starz Nursery building a scooter and buggy storage.



*A new plant lock*

Claire Morris, owner of Coco's Canteen in Weston-super-Mare, said: "I've purchased two plantlocks thanks to the grant. It is a fantastic design which allows you to lock two bikes and create a planting station.

"We've filled our first one with herbs to use in the cafe."

The current funding window is open until Thursday 1 November.

Download the application form from [travelwest.info/businesses/north-somerset](http://travelwest.info/businesses/north-somerset)

For more information or to discuss ideas email [sustainable.travel@n-somerset.gov.uk](mailto:sustainable.travel@n-somerset.gov.uk) or call 01934 426 404.



# Take a trip to the TROPICANA

Music, theatre and comedy can be enjoyed throughout the year at the Tropicana in Weston-super-Mare.

Here's what's coming up soon at the popular seafront events space...



Martin Kemp

## September

Saturday 8

### Pizza and Prosecco Festival

noon-5pm (brunch session),  
6-11pm (evening session).

Entry includes a free Aperol Spritz, a prosecco bible and slice of rustic pizza. 20 types of prosecco and a range of wood-fired pizzas.

Over-18s only. [www.drinkaware.co.uk](http://www.drinkaware.co.uk)

Saturday 15

### Dickinson's Real Deal

ITV's hit Antique Show, presented by David Dickinson, is looking for people to cash in their antiques and valuables. Free admission, no need to book in advance.

For more information email [dickinsonsrealdeal@rdftvtelevision.com](mailto:dickinsonsrealdeal@rdftvtelevision.com) or call 0117 970 7618.

Saturday 22

### Back to the 80s with Martin Kemp DJ set 8pm-1am

Spandau Ballet legend Martin Kemp will be spinning the hits from the '80s. Room two will be '90s music, allowing you to step from one decade to the next. Tickets from £16.50.

## October

Thursday 4

### Instant Wit 7.30pm

Quick-fire comedy improvisation show with sketches, gags, songs and surreal situations. For ages 12+.

Saturday 13

### Rum and Reggae Festival 1-6pm (day ticket), 7pm-midnight (night party).

The widest selection of rums and the smoothest selection of reggae music in the UK. Receive a rum atlas and welcome rum punch on arrival. Live bands, DJs and carnival-style dancers all day. Strictly over-18s only.

[www.drinkaware.co.uk](http://www.drinkaware.co.uk)



## That's not all

There is lots more to see and do in Weston-super-Mare this autumn.

More upcoming events include...

Saturday 22 September

### Eat Weston food festival

Italian Gardens, Weston.

The popular food festival returns, with more than 75 producers. Entertainment includes Punch and Judy, balloon modeller, face painter, livestock and tractors.

[www.eatfestivals.org](http://www.eatfestivals.org)



Saturday 29

### Weekend of Wonders noon-5pm, Italian Gardens

A day of thrills, spills and surprises, with street performers, circus acts and acrobatics. Free family event.

 Search for [Weekend of Wonders](#)

Saturday 20 and Sunday 21 October

### RHL HydroGarden Beach Race

Weston Beach.

Off-road motorbikes racing over nearly 40 sand dunes.

[www.rhlactivities.com](http://www.rhlactivities.com)

For tickets and more information visit [www.tropicana-weston.co.uk](http://www.tropicana-weston.co.uk)



## Potter around Pill

Pill sits on the southern banks of the River Avon and has a long history, from its pottery-making days to the pilots guiding ships up the water.

Meander along the riverbank and then up onto Watchhouse Hill for glorious views all around during this short walk.

### Walk information

**Distance:** about 1¾ miles

**Difficulty:** easy, with a short climb to the top of Watchhouse Hill

**Duration:** about an hour at a leisurely pace

**Refreshments and toilets:** shops in the precinct, and you can use the toilet in the Community Resource Centre if you ask

**Map:** OS 154 Explorer

### How to get there

**Start at map ref:** ST 526 758

**By car:** park considerably in the village centre or around the creek

Pill means tidal inlet, small harbour or creek. The original name of the village was Crockerne Pill, meaning 'pottery wharf' after the large-scale pottery (crocker) industry which thrived here in the middle ages.

Pill has been a maritime community since the 13th century and was home to pilots, the men who guided boats safely up the Avon Gorge to Bristol.

The pilots were in competition with each other to intercept incoming ships, which led to the design of a new boat – the Pill Pilot Cutter – now regarded as one of the finest wooden boats ever built.

However, in 1918 the pilots decided to stop competing and share out the work.

From the shopping precinct, walk down the steps to the grassy area leading under the railway bridge and towards the creek.



At the creek there is a monument to commemorate the Methodist preachers who sailed from Pill to America in the 1770s.

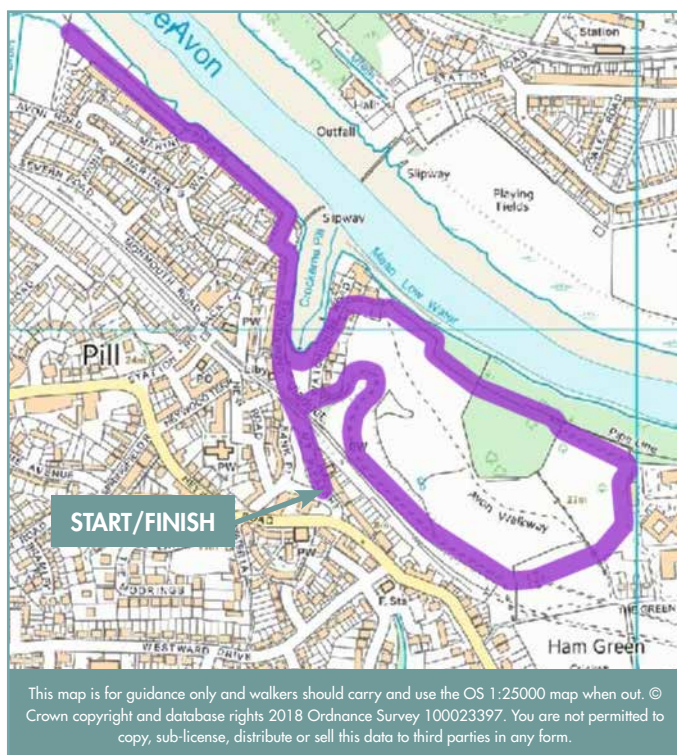
Walk along Underbanks past the Curry House, Duke of Cornwall pub and Pump Square, with the HQ of Portishead Cruising Club.

Step up onto Marine Parade, with the River Avon now in front of you and the M5 crossing ahead.

Walk along the paved path to the end, up the steps, and follow the grassy path for a short while.

This is Pill Foreshore and there is a bench to sit and take in the views.





The area is of international importance for birds, fish and its inter-tidal habitats. Large numbers of wading birds such as redshank, snipe and curlew use the estuary, particularly in winter.

There is a kissing gate into the grazing marsh but it is not easy walking as the ground is uneven and soft and the surface hidden by grass. If you did want to try it, only attempt it on the driest of days, as the long grass can soak a pair of trousers.

Instead, retrace your steps back to Pill creek. Walk around it to the other side, and then down to the end of Watchhouse Road.

Turn right down the track between the garages towards the big white house, Grade II listed Mulberry Cottage.

Continue up the cobbled lane past the cottages, over a stile, and up onto Watchhouse Hill towards the summit. Turn around to take in the wide-ranging views.

Watchhouse Hill is a conservation site owned by North Somerset Council

and a Green Flag-awarded park, meaning it is kept to the highest standards.

Keep to the wider stone path through the trees, with a green fence on your left.

You will then pass an orchard on your right. The orchard originally belonged to Ham Green Hospital but became wild and overgrown after the hospital closed in 1999.

The Friends of Watchhouse Hill helped restore it and it's now a pleasant community orchard of more than 30 different varieties of apples, with picnic benches in the centre.

Annual apple days and village picnics take place here, along with educational projects with local schools.

Keep following the path around the edge of the orchard and you'll exit into open parkland.

Head towards the circular mound, go around it and follow the path on the opposite side. You are now on Sustrans route 41.

Follow the paved path past the sculptures, as it winds back down the hill to Watchhouse Road and the creek.





## LOCAL EVENTS

### September

#### Now until Sunday 30

**North Somerset Arts 20x20 exhibition** Old Town Quarry, South Road, Weston-super-Mare. Artwork that is 20cm x 20cm. Quarry open 10.30am-4.30pm, Wednesday-Sunday.

#### Friday 7

**Midnight Beach Walk A** 5k sponsored walk along Weston beach. [www.westonhospicecare.org.uk](http://www.westonhospicecare.org.uk)

#### Saturday 8

**Playhouse Theatre Open Day** High Street, Weston-super-Mare. Guided tours between 11am and 3pm. Organised by The Friends of The Playhouse with theatre management. Free entry.

**Banwell Bone Caves Tour** 2.15-5pm, Banwell Caves, Banwell Lane. A chance to see the 19th century pleasure garden, follies/grottos and unique bone cave. £15 (under 16s free). [www.mendiphillsaonb.org.uk/events](http://www.mendiphillsaonb.org.uk/events)

**Grand Pier Gin Festival** 3-9pm, Grand Pier, Weston-super-Mare. Advance tickets £12, £15 on the day. [www.grandpier.co.uk](http://www.grandpier.co.uk)

#### Sunday 9

**Charity model train show** 10am-4.30pm, The Campus, Locking Castle, Weston. In aid of Weston Hospicecare and The Kids Club. Adults £7, concessions £6.50, children £2, family £16. [www.westonsupermaretrainshow.co.uk](http://www.westonsupermaretrainshow.co.uk) 01934 425 075



**North Somerset Ploughing and Hedging Match and crafts and produce show** 10am-5pm, Grove Farm, Brockley Way, Claverham. Rural crafts, trade stands, ice cream, BBQ. Free entry and parking. [www.nsas.org.uk/nsas-events](http://www.nsas.org.uk/nsas-events)

#### Wednesday 12 - Saturday 15

**High School Musical on Stage** by Clevedon Light Opera Club Juniors 7.30pm (2.30pm Sat matinee) Princes Hall, Princes Road, Clevedon. Evening tickets - adults £12, children under 12 £6. Saturday matinee - adults £10, children under 12 £5. From Souk, The Triangle, or [www.clevedoncommunitycentre.org.uk](http://www.clevedoncommunitycentre.org.uk)

#### Saturday 15 and Sunday 16

**9th Nailsea International Bike Show** 11am-11pm (Sat), 11am-5pm (Sun) Royal Oak pub, High Street, Nailsea. Bike event to raise money for Children's Hospice South West. Live music, trade stands and food. Free entry.

#### Sunday 16

**Emergency Services Open Day** 10am-4pm, Avon and Somerset Police HQ, Weston-in-Gordano. See first-hand how emergency services and partners work together. Free event but book tickets in advance. [www.avonandsomerset.police.uk](http://www.avonandsomerset.police.uk)

#### Thursday 27 - Saturday 29

**A double bill by Backwell Playhouse - Alarms** (a one-act play) and They'll Never Believe Me (songs and poems from the First World War) 8pm, Backwell Playhouse. £12 (£10 members) from 01179 633 586, 07974 223 081 or [www.BackwellPlayhouse.co.uk](http://www.BackwellPlayhouse.co.uk)

#### Sunday 30

**Portishead Lions Club car boot** 9am-1pm, Portishead Show Field, Clapton Lane. Entry by donation. Sellers from 8am, buyers from 9am.

### October

#### Saturday 6 October

**Open rehearsal with West Mendip Orchestra** 10am-4pm, Churchill Academy, Churchill. All instrumentalists invited to come along and play. £10 charge to cover expenses. To register call 07540 580 824 or email [chair@west-mendip-orchestra.org.uk](mailto:chair@west-mendip-orchestra.org.uk)

#### Friday 19 - Saturday 20

**White Hart Festival** 6-11pm (Fri), 3-11pm (Sat), White Hart pub, Clevedon Road, Weston-in-Gordano. Fun, food and drinks. Tickets £10.

## MUSIC

### Mondays

**Portishead in Harmony** (E)(women only) 10.30am-12pm, The Folk Hall, Portishead High Street. £5 per session. [www.wendysergeant.vpweb.co.uk](http://www.wendysergeant.vpweb.co.uk) 01275 814 220

**Clevedon A Cappella** (E) (women only) 2-3.30pm, Kenn Road Methodist Church. £5 per session. [www.wendysergeant.vpweb.co.uk](http://www.wendysergeant.vpweb.co.uk), 01275 814 220

**Afternoon singing group** (fortnightly) 2-4pm, St Jude's Hall, St Peter's Church, Baytree Road, Worle. 01934 413 571

**Mixed Company Community Choir** (E) 7.30-9.30pm, Golden Valley Primary School, Nailsea. £6 per session with free taster

**Clevedon Choral Society** (E) 7.15 pm, Methodist Church Hall, Kenn Road, Clevedon. [www.clevedonchoralsociety.org.uk](http://www.clevedonchoralsociety.org.uk)

**Weston-super-Mare Rock Choir** (E, term time only) 7.30pm, Vintage Church, Hughenden Road. [www.rockchoir.co.uk](http://www.rockchoir.co.uk)

**Clevedon Light Opera Club** (E) 7.30pm (Juniors Thu 7pm) Princes Hall, Clevedon Community Centre. 01275 791 556

**Vocalise Choir** (E) 7.30-9.30pm, United Reform Church, Waterloo Street, Weston. £5 inc refreshments. 01934 627 709. [www.vocaliseann.co.uk](http://www.vocaliseann.co.uk)

**Clevedon Players** (and Wed, Fri)(leading up to a play) 7.30-10pm, the Stables, behind Princes Hall, Princes Road, Clevedon. 01275 853 975

**Costanzi Consort** (E) 7.45pm, All Saints Church, Weston-super-Mare. Auditioned chamber choir directed by Peter Leech. [www.costanziconsort.org.uk](http://www.costanziconsort.org.uk)

**RAFA Concert Band** (E) 8pm, Victoria Methodist Church Hall, Station Road, Weston-super-Mare. [www.rafaconcertband.org.uk](http://www.rafaconcertband.org.uk) 01934 820 205

**Footlights Community Choir** 8-9.30pm, Community Hall, Trinity School, Portishead. No experience necessary.

### Tuesdays

**Cadbury Wind Band** (E)(term time only) 7.15-9.15pm, Yatton Rugby Football Club. 01275 792 300

**Lyrical Ladies Choir** (E) 7.20-8.20pm, Nailsea School. £4 per session. 07722 298 550, [gillatkinson15@blueyonder.co.uk](mailto:gillatkinson15@blueyonder.co.uk)

**Portishead Rock Choir** (E, term time only) 7.30pm, Gordan School canteen, St Mary's Road. [www.rockchoir.com](http://www.rockchoir.com)

**Waves of Harmony** (E) 7.30pm, Victoria Methodist Church Hall, Station Road, Weston-super-Mare. Women's 4-part acapella group. 01934 643 823. [www.wavesofharmony.co.uk](http://www.wavesofharmony.co.uk)

**Cheddar Male Choir** (E) 7.30pm, Draycott Village Hall. New members welcome. [www.cheddarmvchoir.co.uk](http://www.cheddarmvchoir.co.uk)

**Winscombe Community Singers** (E) 7.30pm, Winscombe Community Centre, Sandford Road. [www.facebook.com/winscombecommunitysingers](http://www.facebook.com/winscombecommunitysingers)

**Campus Choir** (E) 7.30-9pm, The Campus, Locking Castle, Weston-super-Mare. 01934 832 283. [www.singoutlouduk.com](http://www.singoutlouduk.com)

**Weston Choral Society** (E) (term time only) 7.30pm, Milton Methodist Church Hall, Milton Hill, Weston-super-Mare. 01934 813 255

**Clevedon Music Club** (3) 7.30pm, Community Centre, Princes Road. Classical concerts by professional musicians. £8 per concert on the door. 01275 879 099

**Nailsea Choral Society** (E) 7.30pm, Vestry Hall, Christ Church, Nailsea. 01275 875 533 [www.nailseachoral.org.uk](http://www.nailseachoral.org.uk)

**Trinity Singers** (E) 7.30pm, Churchill Primary School, Pudding Pie Lane, Langford. [www.trinitysingers.co.uk](http://www.trinitysingers.co.uk) 01934 415 301

**Tra La Community Choir** (A) 7.30pm, Club Room, Community Centre, Long Ashton. 07932 623 672

**Portishead Town Band** (E) 7.45pm, Methodist Church Hall, High Street. New players welcome. 07816 544 474, 01275 818 575

**Pill Community Choir** (E) 7.45-9.15pm, Pill Community Centre. £5 per session or £4 if paying for a term. Free taster session. [www.wendysergeant.vpweb.co.uk](http://www.wendysergeant.vpweb.co.uk), 01275 814 220

**Congresbury Singers** (E) 7.50pm, Old School Rooms, Congresbury. 01934 876 104

**Samba Drumming** (E) 8-10pm, All Saint's Church Hall, All Saint's Lane, Clevedon. Beginners welcome, £6 with free taster session. 01275 545 714

**Weston Brass Band** (E)(and Thu) 8pm, Church Road Methodist Church, Upper Church Road, Weston-super-Mare. 01934 842 461

**Nailsea Folk Club** (2) Grove Sports Centre, Nailsea. (4) Prince of Orange Inn, Yatton. All musicians and singers welcome. 01275 857 784

### Wednesdays

**Clevedon Ladies Choir** (E)(September-June) 2.15-3.30pm, St Peter's Church Hall, Alexandra Road. £25 per year. 01275 874 109 [clevedonladieschoir@gmail.com](mailto:clevedonladieschoir@gmail.com)

**Highly Strung Community Band** (E) 6.30-9.30pm. Folk/country music. [www.highlystrungcommunityband.co.uk](http://www.highlystrungcommunityband.co.uk) 01275 847 909

**Nailsea Rock Choir** (E, term time only) 7.30pm, Southfield Church, Southfield Road. [www.rockchoir.com](http://www.rockchoir.com)

**Weston Music Appreciation Society** (A) 7.30pm, St Jude's Hall, Baytree Road. 01934 814 752

**Somerset Singers** (E) 7.30pm, Meeting House, Sidcot School, Sidcot. 01934 743 965



**Yatton Ladies Choir (E)**  
7.30-8.30pm, Yatton Infants School. £4 per session. 07722 298 550, gillatkinson15@blueyonder.co.uk

**Harmony Plus Choir (E)**  
7.45-9pm, Emmanuel Church, Weston. 01934 629 112

**Footlights Community Choir**  
7.45-9.15pm, Community Entrance, Nailsea School, Mizzymead Road. No experience necessary. 07818 065 015 footlightsperformance@gmail.com

**Portishead Community Choir (E)** 8-9.30pm, Avon Way Hall, Portishead. £5 per session or £4 if paying for a term. Free taster session. www.wendysergeant.vpweb.co.uk, 01275 814 220

### Thursdays

**Music Is Fun (E)**(babies, toddlers and pre-schoolers) Methodist Church, Nailsea. 30 min session £3, 40 min session £3.40. 07722 298 550, gillatkinson15@blueyonder.co.uk

**Singing Mums Choir (E)**  
7.10-8.10pm, Nailsea School. £4 per session. 07722 298 550, gillatkinson15@blueyonder.co.uk

**The Baytree Singers (E)**  
7.30-9.30pm, St Jude's Hall, St Peter's Church, Baytree Road, Worle. No experience necessary.

**Portishead Choral Society (E)** 7.45pm, The Folk Hall, High Street, Portishead. 01275 855 059

**Cantiamo Ladies Choir (A)**(grade 8+ musicians only) 8.15-9.30pm, Nailsea School. £5 per session. 07722 298 550, gillatkinson15@blueyonder.co.uk

**Weston Organ and Keyboard Club (1)**  
7.30pm, Somerset Suite, Weston Football Club. £5 members, £6 non-members. 01934 812 759

**Worle Community Choir (E)**  
7.30pm, Becket Primary School, Tavistock Road, Worle. New members welcome. 07972 909 939

**Vibe Pop/Rock Choir (E)** 7.30-9.30 pm, St Joseph's Primary School, Bristol Road, Portishead. vibepopchoir@gmail.com

**Muskrats Jazz Band (1)**  
8.30pm, Clarence House, High Street, Portishead. £4. Bar and dancing, all welcome. 01275 814 434

### Fridays

**Singstastics Junior Choir (E)** (Y3-Y7) 3.40-4.30pm, Hannah More School, Nailsea. £3 per session. 07722 298 550, gillatkinson15@blueyonder.co.uk

**Lions Brass 4 Youth (E)**  
5.30pm/6.15-7.45pm, 1st Clevedon Scout Hall. County brass band. 07815 733 886

**Weston Youth Orchestra (E)**  
6-7pm (8-12 yrs), 7-9pm (12-20 yrs). Boulevard United Reformed Church, Weston-super-Mare. 01934 622 519 or 07787 520 230

**Male Choir (E)** 7.30-9pm, Victoria Methodist Hall, Weston-super-Mare. 01934 529 728

**North Somerset Community Brass Band (E)** 7.30-9.30pm, Puxton and Hewish Village Hall. 01275 397 582

**Congresbury Brass Band (E)**  
7.30-9.30pm, Methodist Church Hall, Congresbury. 01275 849 611 / 07986 007 829

**Clevedon Gilbert and Sullivan Society (E)**  
7.30-10pm, St Peter's Church Hall, Alexandra Road, Clevedon. New members welcome. 01934 838 713

**Nailsea Concert Orchestra (E)**(term time only) 7.30pm, Nailsea Methodist Church. www.nailseaconcertorchestra.org

**West Mendip Orchestra (E)** (term time only) 7.45-10pm, Lynch Chapel, Winscombe. 01275 463 480

**Harmony Plus Brass (E)**  
7.45pm, Emmanuel Church, Weston. 01934 629 112

**Nailsea Theatre Club (E)**  
8pm, Nailsea Little Theatre, Union Street. 01275 852 275 (Box office: 07722 981 037)

### Saturdays

**Pret A Changer Ladies Choir (A)** 9.30-11.30am, Southfield Church, Nailsea. £8 per session. 07722 298 550, gillatkinson15@blueyonder.co.uk

**Cadbury Saxophone Band (A)** 10.15am-12.30pm in Cleveve/Yatton. 01934 830 072 or www.cadburysaxband.co.uk

### Sundays

**Barley Rye choir (E)**  
6.30-8.30pm (winter) 7-9pm (summer), Ring o' Bells, Nailsea. New members welcome. 01454 411 052

## DANCE

### Mondays

**DB's Dance Club (E)**  
10-11am, Clevedon Community Centre. Line dancing. 01275 854 375

**Latin and jive (E)** (absolute beginners 1-2pm, next steps 2.15pm) St Peter's Church Hall, Clevedon. £5. 07940 823 581

**Ballroom, Latin and sequence dancing (E)**  
2-4.30pm, St George's Community Centre, Willow Close, Weston-super-Mare. 07437 203 642

**Egyptian Bellydance (E)** (term time only) 7-8pm, Backwell WI Hall, Station Road. 01275 855 016

**Easy Strollers line dancing (E)** 7-8pm (intermediate), 8-9pm (improvers), Clevedon Triangle Club, Old Church Road. 01275 875 235

**Nailsea Scottish Dancers (E)** 8pm, Christchurch Hall, Christchurch Close, Nailsea. £2.50. 01275 790 937

**Portishead Square Dancers (E)** 8-10pm, Folk Hall, Portishead. 01275 817 964 £2.50 each class

### Tuesdays

**Social Morning with Historic and Country Dancing to Live Music (E)** 9.30-11.30am, Folk Hall, Portishead. £3 per person. 01275 847 909

**Movement to Music (E)**  
10-11am, Methodist Church, Portishead. 07899 754 937

**DB's Dance Club social tea dance (E)** 2.30-5pm, Clevedon Community Centre. 01275 854 375

**Abanico Salsa Classes (E)**  
7.30-10.30pm (3 classes, beginners to improvers) Kenn Village Hall. Call in advance: 07971 565 406

**Avon Dance Club (E)**  
8-10pm, Somerset Hall, Portishead. Ballroom and Latin practice night. 01934 823 128

**Backwell Sequence Dance Club (E)** 8-10.15pm, WI Hall, Backwell. £3 per person. 07710 460 550

**Weston Folk Dance Club (E)** 8-10pm, Corpus Christi Church Hall, Weston-super-Mare. 01934 514 226

**Brazilian carnival style dance with live drummers (E)** 8-10pm, All Saint's Hall Clevedon. Call 07780 641 427

**Portishead LeRoc (E)**  
8-10.30pm, Portishead Primary School, Station Road. Modern jive. 07909 063 624 heather@portisheadleroc.com

**In Motion Dance (E)**  
8-11pm, Banwell Village Hall. 07903 655 924. www.in-motion-dance.co.uk

### Wednesdays

**Easy Strollers line dancing (E)** improvers 9.15-10.15am, 1st Clevedon Scout Hall, Great Western Road. 01275 875 235

**New and Old Sequence dance class (E)** 10.30am-12.30pm, Kewstoke Village Hall. 07437 203 642

**DB's Dance Club line dancing (E)**  
10.45-11.45am, Clevedon Community Centre. 01275 854 375

**Sequence tea dance (E)**  
2-4pm, Avonway Hall, Portishead. 01934 644 745

**Latin and jive (E)** (absolute beginners 7-8pm, next steps 8.15pm) St Peter's Church Hall, Clevedon. £5. 07940 823 581

**Easy Strollers line dancing (E)** beginners 7-8pm, 2nd Clevedon Scout Hall, Coleridge Vale Road North

**50s and 60s rock 'n' roll (E)** 8pm-late, Tavern Inn the Town, Regent Street, Weston-super-Mare. 01934 412 826

### Thursdays

**Easy Strollers line dancing (E)** 9.15-10.15am (improvers) 10.20-11.20am (intermediate) 1st Clevedon Scout Hall. 01275 875 235

**Irish Set, English and Scottish Country Dance (E)**  
10am-noon, North Weston Village Hall, Portishead. £5. 01275 847 909.

**DB's Dance Club line dancing (E)** 11am-1pm, Folk Hall, Portishead. 01275 854 375

**Yatton Sequence Dance Club (E)** 2-4.30pm, Claverham Village Hall. 01275 851 221 Egyptian Bellydance (E) (term time only) 6.45-7.45pm, St Saviours Church Hall, Locking Road, Weston-super-Mare. 01275 855 016

**Nailsea Le Roc (E)**  
8-10.30pm, Scotch Horn Leisure Centre, Nailsea. Beginners/intermediates. £6. 07816 649 077

### Fridays

**North Somerset Intercultural Dancing Association (E)**  
7.45-9.30pm, Nailsea Methodist Church, Silver Street. Admission £2. www.nida.site40.net

**Clevedon Sequence Dance Club (E)** 7.45-10.30pm, Walton St Mary's Church Hall. 01275 847 293

**Social dance (1)**  
8-11.30pm, Somerset Hall, Portishead. £5. 01275 831 884



**Streetdance (2)(4)**  
7-8.30pm, Claverham Village Hall. For 8-15-year-olds. 01934 838 017

**Social dance (4)**  
8-10.30pm, St. James Hall, Winscombe. £4. 01934 516 852

### Saturdays

**Chelis Theatre Company (E)**  
2-5pm St. Saviours Church Hall, Weston-super-Mare. Drama, dance and singing for 6-18-year-olds. 01934 625 301

### Sundays

**Avon Dance Club Tea Dance (Monthly)** 3-6pm, Somerset Hall Portishead. 01934 823 128

**Ballroom and sequence (E)** 7.30-10pm, Kewstoke Village Hall. 07437 203 642

**Social dancing (E)**  
7.30-10.30pm, Hutton Moor Leisure Centre, Weston-super-Mare. £5. 01934 518 529 www.westonsocialdancing.co.uk



# Made in North Somerset Showcase is back

Sample the delights of locally-produced food and drink and browse stalls of talented artists when the Made in North Somerset showcase returns next month.

More than 50 stallholders will be showcasing their wares at the event, which takes place at **Court House Farm in Portishead on Sunday 14 October**.

The event is organised by North Somerset Council and aims to promote and celebrate the rich variety of producers, artists and craftspeople based in North Somerset, from the artisan to those who now export worldwide.

Sample and buy products and find out more about the people behind these creations - the passion and inspiration that goes into creating great tasting food and drink and stunning artwork.

Throughout the day there will be music and activities for children, including storytelling with director of Somerset Storyfest Michael Loader and shanty singers the Barnacle Buoys.

Entrance costs £1 per adult, free for children. There is an indoor café for hot and cold drinks.

[www.innorthsomerset.co.uk/madein](http://www.innorthsomerset.co.uk/madein)

@madeinnsomerset

TimeOutInNorthSomerset



**Sunday 14 October 2018,**

**10am-4pm**

**Court House Farm, Church Road South,  
Portishead BS20 6PU**

[www.courthousefarm.com](http://www.courthousefarm.com)

## How to get there

Court House Farm is at the end of Portishead High Street. For bus information visit <https://travelwest.info/> The nearest car park is in Roath Road.

From walks, top picnic spots and history through to sport, upcoming events and local businesses.

You will find these and much more at

[visitportishead.net](http://visitportishead.net)

### A Stone's Throw

[astonesthrowportishead](https://www.facebook.com/astonesthrowportishead)

Beautiful handmade pictures working with seaglass, crockery and pebbles washed up on local shores.

### Birdsmith

[birdsmithjewellery](https://www.facebook.com/birdsmithjewellery)

Simple contemporary jewellery in silver and gold, sometimes using semi-precious stones and beads.

### Carolyn Williamson

[www.carolynjewellery.co.uk](http://www.carolynjewellery.co.uk)

Maker of sterling and fine silver jewellery.

### Abi Murray Prints

[www.abimurrayprints.co.uk](http://www.abimurrayprints.co.uk)

A screen print artist creating collections of limited edition prints and other products.

### Blackberry Lane Design

[blackberrylanedesigns](https://www.facebook.com/blackberrylanedesigns)

Enameller working in bright vibrant colours, inspired by the countryside.

### Charcoal

[www.charcoalsomerset.co.uk](http://www.charcoalsomerset.co.uk)

Masters of smoked barbecued food, using locally sourced meat.

### Chew Moo's Ice Cream

[www.chewmoos.co.uk](http://www.chewmoos.co.uk)

Artisan ice cream made with the milk and cream of a pedigree Guernsey herd.



### Aldwick Estate

[www.aldwickcourtfarm.co.uk](http://www.aldwickcourtfarm.co.uk)

Award-winning English wine from Aldwick's own estate-grown grapes.

### Banwell Pottery,

### Brandon Trust

[www.banwellpottery.org](http://www.banwellpottery.org)

Part of Brandon Trust, a UK charity which supports people with learning disabilities and autism. Designing and producing a range of high quality ceramics and screen prints.

### Bradley's Juice

[www.bradleysjuice.co.uk](http://www.bradleysjuice.co.uk)

A family-run business, producing outstanding single variety apple juices, award-winning, all natural soft drinks and cider.

### CJ's

### Homebaking

Good old-fashioned cakes and savouries. Gluten/wheat free, sugar free goodies too.

### Barbara Langdon

Organic wheat bags filled with locally-grown organic wheat and made in lots of shapes and sizes.

### Brockley Stores

[www.brockleystores.co.uk](http://www.brockleystores.co.uk)

Making, baking, creating and selling delicious local food.

### Claire Hall Glass

[www.clairehall.co.uk](http://www.clairehall.co.uk)

Award-winning glass artist and jewellery designer creating contemporary kiln-fused jewellery and original landscapes in glass.

### Barefoot Stonebaked

### Pizza Co

[www.barefootstonebakedpizza.co.uk](http://www.barefootstonebakedpizza.co.uk)

High-quality Italian pizzas from converted retro-style Italian micro-van the traditional way, in a wood-fired oven.

### C. Eskill Ceramics

[www.carmeleskillceramics.com](http://www.carmeleskillceramics.com)

Functional handmade tableware, from espresso cups to vases.

### Clevedon

### Craft Centre

[www.clevedoncraftcentre.co.uk](http://www.clevedoncraftcentre.co.uk)

A selection of crafts and art from a delightful hub for local crafts.

### Barley Wood Walled

### Kitchen Garden

[www.walledgarden.co.uk](http://www.walledgarden.co.uk)

Organic vegetables.

### Cadbury Alpacas

[www.alpacaemporium.co.uk](http://www.alpacaemporium.co.uk)

A small alpaca farm producing luxurious natural fibre products.

### Dragonfly Jewellery and Glass

[www.dragonflyjewelleryandglass.co.uk](http://www.dragonflyjewelleryandglass.co.uk)

Silver jewellery incorporating semi-precious beads and glass beads in unique designs.

### Carina Roberts

### Illustration

[www.theautumnhobby.wordpress.com](http://www.theautumnhobby.wordpress.com)

Illustrations and artwork inspired by the natural world.





## Felt by Fi

**f** FELTbyFI

Hand-felted, hand-dyed, hand-cut art and craft. Pictures, accessories and more.

## Glede Brewing Company

**f** Gledebrewing.co.uk

A microbrewery, making traditionally crafted real ales.

## go wild preserves

**f** search for go wild preserves

Artisan business with a fresh approach to making seasonal jams and chutneys.

## Grandma Knitting

**f** grandmaknitting

Gorgeously soft, high quality hand knitted items.

## Handpainted Stuff

**f** handpaintedstuff

Hand painted and upcycled furniture, wall panels and other decorative objects.

## It Was Made For Me

[www.itwasmadeforme.com](http://www.itwasmadeforme.com)

Perfectly personalised prints, off-the-shelf artwork.



## Jacklands Fishing Lakes and Verbena Floral Styling

**f** Jacklandsfishinglakes [www.verbena.org.uk](http://www.verbena.org.uk)

A small independent trout and coarse fishery with a farmshop and tearooms.

Verbena Floral Styling is a wedding and events florist.

## Jane Booth Ceramics

[www.janeboothceramics.co.uk](http://www.janeboothceramics.co.uk)

Colourful, pottery with a vintage feel but made in modern, practical shapes.



## Jane's Flower Pots

**f** clevedonmarket2016

Ready planted pots, tubs, baskets, hanging baskets etc, for all seasons. Also bedding, herbs, veg and plants.

## Jewellery by Jo

[www.jewellerybyjo.co.uk](http://www.jewellerybyjo.co.uk)

Simple yet pretty sterling and fine silver jewellery.

## JoeJoe Handmade

**f** JoeJoeHandmade

Stylish and quality hand sewn items, with quirky fabrics to make wash bags, make up cases, tote bags and other homewares.

## Julia's Sewing Room

Quality fabric home accessories and gifts for any occasion.

## KS Woodwork

[www.kswoodwork.co.uk](http://www.kswoodwork.co.uk)

Bespoke woodcraft products for weddings, graduations and homeware items.

## Lucy Routh Art

[www.lucyrouth.co.uk](http://www.lucyrouth.co.uk)

Still life artist specialising in images like fish, sea life, fruit, vegetables and flowers.

## Lye Cross Farm

[www.lyecrossfarm.co.uk](http://www.lyecrossfarm.co.uk)

The Alvis Family have been producing PDO-certified West Country farmhouse cheddar since 1952. Now producing a multi-award winning range of organic and non-organic cheeses.

## M J Amos

Local farmer selling organic beef and lamb joints, steaks and chops, apple juice, halloumi and ricotta cheese, and jams.

## Missycards

[www.missycards.co.uk](http://www.missycards.co.uk)

Handmade and designer greetings cards and small gifts including enamel mugs, prints, keyrings and badges.

## Moonlight Jewellery

[www.moonlight-jewellery.com](http://www.moonlight-jewellery.com)

Handcrafted one-of-a-kind glass beads to create bespoke jewellery.



## Mydsomer Studio

[www.mydsomer.co.uk](http://www.mydsomer.co.uk)

Handmade, affordable fused glass, silver plated pendants, earrings, brooches, rings, cufflinks, scarf rings, glass dishes and panels.



## Nempnett Cider Company

[www.pigletschoice.co.uk](http://www.pigletschoice.co.uk)

Cider and perry picked and pressed in the traditional way, using 100 per cent vintage cider apples and pears.

## Olwyn KW

[www.RtBear.co.uk](http://www.RtBear.co.uk)

Local potter working in porcelain producing high quality production ware and decorative pieces.

## Outsidethebox Natural Makeup, Skincare and Holistic Massage

[www.outsidetheboxmakeup.co.uk](http://www.outsidetheboxmakeup.co.uk)

Cruelty free, paraben free, makeup and skincare products, as well as holistic massage therapies.

## Renee Kilburn Ceramics and Creations by Fina

[www.reneekilburn.com](http://www.reneekilburn.com)  
[www.creationsbyfina.co.uk](http://www.creationsbyfina.co.uk)

Colourful sculptural and functional ceramics for the home and garden, and mixed media upcycled materials to create timeless art and crafts.

## Somerset Charcuterie

[www.somersetcharcuterie.com](http://www.somersetcharcuterie.com)

Traditional Italian and Spanish methods of curing meat, combined with the rich food culture of the West Country.

## Susannah Crook

[www.susannahcrook.co.uk](http://www.susannahcrook.co.uk)

Sky and seascape paintings of the beautiful North Somerset coastline.

## Sutton Ridge Vineyard

**f** search for Sutton Ridge Vineyard

Family-owned and run vineyard producing award-winning still and sparkling wines.



## The Blue Room

[www.theblue-room.co.uk](http://www.theblue-room.co.uk)

Social enterprise retailer selling locally handmade gifts and homeware.

## The Story Group

[www.storybutchers.co.uk](http://www.storybutchers.co.uk)

Organic beef and lamb burgers, sausage and bacon baps, pulled pork ciabatta rolls.

## The Wicked Chilli

[www.thewickedchilli.co.uk](http://www.thewickedchilli.co.uk)

Producing all things chilli in the village of Pill.

## Trethowan's Dairy

[www.gorwydd.co.uk](http://www.gorwydd.co.uk)

Family business, producing handmade cheese using traditional recipes and methods.

## West Country Wood Design

[www.westcountrywooddesign.co.uk](http://www.westcountrywooddesign.co.uk)

Designers and makers of bespoke furniture.

## Whitegates Apple Juice

Award-winning single and mixed variety apple juices, traditional cider with a modern twist and unpasteurised cider vinegar.

## Winnies Bakery

[www.winnies-bakery.com](http://www.winnies-bakery.com)

Hand crafted bakers, using traditional fermentation and local ingredients.

## Woodnthings

[www.woodnthings-uk.com](http://www.woodnthings-uk.com)

Paul designs and creates beautiful unusual mirrors and artefacts depicting tree silhouettes and landscapes.

North Somerset Council is co-ordinating the Made in North Somerset Showcase but is not responsible for any acts or omissions by any individual businesses involved in this event. North Somerset Council does not accept any liability for any accident, injury or illness arising from visits to the event.

For accessibility at Court House Farm, call 01275 846 322.

# More businesses moving into

Hundreds of new homes continue to be built on Weston-super-Mare's former airfield site – and the adjoining Business Quarter is booming too.

Haywood Village is rapidly taking shape and when completed there will be a new community of 1,650 homes, schools, shops and community facilities.

A short walk along the newly-opened Cross Airfield Link Road is Weston Business Quarter – the 89-acre (36 hectare) commercial element of the development, just off the A371.

Weston Business Quarter is being jointly delivered by Persimmon and North Somerset Council as landowners.

One of the latest companies to set up close to North Somerset Enterprise Agency's Hive building and the popular Landing Light pub is Happy Days nursery, just in time for the influx of new families.

*Life* spoke to Happy Days operational lead Stephanie Hearne to find out more...



How did you choose Weston and this particular location?

Weston-super-Mare is a growing community with many new families choosing to live in the area.

This, coupled with an existing requirement for additional childcare spaces in the area, led us to select Weston-super-Mare as a strong location for a new nursery.

There are 81 places available and it is registered to open between 7am and 7pm for 50 weeks a year.

The nursery has designated drop-off and pick-up spaces and can be easily accessed from the A371.



What makes your nursery stand out?

We have focused on setting the benchmark for childcare by combining international research, collective knowledge and inspirational practice to support every child to become a high achiever.

With more than 27 years expertise under our belts, we are extremely proud to now be the leading premium childcare provider in the South West.

We are recognised by Ofsted as part of the best provision in the country, with more than 73 per cent of our settings rated as outstanding, and the rest rated as good.

Our colleagues stand out from the crowds and are rightly proud of their outstanding achievement when only 20 per cent of UK early years providers achieve an Ofsted outstanding judgement.





# popular Business Quarter

What are your plans for the future?

Happy Days nurseries will continue to grow and we are consistently looking for opportunities for new sites across the South West.

[www.happydaysnurseries.com](http://www.happydaysnurseries.com)  
0800 783 3431

What support is available for new businesses wanting to set up or move to the area?

All businesses wanting to invest in North Somerset receive extensive support from the council's economic development service.

The council started working with Happy Days more than two years ago when they were looking for a site.

Support continued throughout the planning application process and when the building was under construction, the council helped promote job vacancies through its recruitment and employment support networks.

The council has also ensured that the nursery has become part of the local community, allowing the Happy Days management team to foster links with local primary schools, their neighbours at North Somerset Enterprise Agency, North Somerset Enterprise and Technology College and the wider college group.

## What is Weston Business Quarter and Junction 21 Enterprise Area?



Businesses are thriving in Weston Business Quarter, which lies at the heart of Junction 21 Enterprise Area.



The Enterprise Area was established by the West of England Local Enterprise Partnership and North Somerset Council in 2013, as the employment element of the Weston Villages scheme.

It covers 172 acres (70 hectares) of land from Weston town centre close to Waitrose and Winterstoke Road in the west, to Worle train station and the M5 in the east.

It is home to a diverse and evergrowing range of local companies, start-ups, national and international businesses.

As a whole, Junction 21 Enterprise Area will create about 9,000 jobs

in the next couple of decades and provide commercial premises and employment opportunities for the new communities at Haywood Village, Locking Villages and the new homes delivered through the regeneration of Weston town centre.

It is a partnership delivered by Persimmon Homes, St Modwen, Mead Realisation, the Homes and Communities Agency, and North Somerset Council.

Weston Business Quarter is home to North Somerset Enterprise Agency's Hive, which offers premises and startup support to small businesses; North Somerset Enterprise and Technology College; and several local businesses.

More employment space is expected to be created later in the year.

North Somerset Council will also be on site later this year constructing the new food and drink research and innovation centre, The Food Works<sup>SW</sup>.

For more information about the sites, news and progress visit [www.j21.co.uk](http://www.j21.co.uk)

 @J21EA

For any business enquiries, contact the economic development team on 01934 426 266 or [business@n-somerset.gov.uk](mailto:business@n-somerset.gov.uk)



# A watching eye

A team of council officers work around the clock to ensure that roads and open spaces in North Somerset remain safe and well cared for.

Seven area officers each have responsibility for their own part of the area and take it in turns to provide emergency out-of-hours cover throughout the night.

*Life* spoke to Pepe Sanjurjo, the area officer for Weston-super-Mare, to find out more about the highs, lows and challenges presented by this vital role.

## How does the area officer team work?

We're the eyes and the ears of the residents across North Somerset. Every time someone reports an issue with a road or open space, it's an area officer who goes out to investigate.

We each have our own patch to cover based on council ward boundaries. When a resident lets us know about an issue, usually using the online forms on the website at

[www.n-somerset.gov.uk/connect](http://www.n-somerset.gov.uk/connect), the system allocates the enquiries to the officer responsible for that patch.

We carry special kit in our vehicles to deal with minor issues there and then, such as removing small overhanging branches. If it's a bigger job we raise instructions for one of our contractors to solve the problem.

We all carry an iPad with special software which allows us to instruct contractors, pass on information to other council teams and take and attach photographs so everyone involved can see the extent of the issue. It's a great system that works very well and enables us to do our jobs away from the office.

As well as responding to reported issues, we are also responsible for regular safety inspections of roads, footpaths and cyclepaths. The frequency of the inspections varies depending on the classification of the road, main roads are done monthly.

## Issues

The area officers investigate:

- ✓ potholes
- ✓ fly tipping
- ✓ overgrown vegetation
- ✓ litter
- ✓ dog fouling
- ✓ broken kerbs
- ✓ blocked gullies
- ✓ missing signs
- ✓ general problems with the road surface

## What does a typical day look like?

You can't plan your day in this job! You can intend to carry out highways inspections but then something else more urgent comes up and everything changes. Every time something is reported we go out to investigate. You have to adapt, especially in certain weather conditions, such as the snow in March.



## Snow response

During March's snowfall the area officers were provided with 4x4 vehicles to ensure they could continue to patrol the area.

The team worked around the clock checking all the main routes and monitored conditions to see if roads needed ploughing or gritting again.

## What do you most enjoy about your job?

Some things we deal with are straightforward but others need investigating and I really enjoy the problem solving. For example, when we have very overgrown vegetation we need to find out who owns the land. Sometimes this can be complicated if it is a wooded area or the land is owned by a trust.

I also enjoy working outside in the fresh air. We are very mobile now, working on the move with our iPads, so we can pick up emails, customer enquiries and liaise with contractors while we're out and about, and only need to spend about half a day a week in the office catching-up and processing things on a computer.

## What is the most common thing you deal with?

The most common issue is potholes. There are certain criteria that need to be met to fill potholes urgently, depending on depth and locality, but I use my experience and judgement to decide the priority. I would consider how much traffic is going to be passing over the hole and if there are others in the area that need to be filled at the same time. I also check with my highways colleagues back at the office to find out if any resurfacing work is already planned to take place in the area.

## Special kit

Each area officer is provided with a car with highway markings and a flashing beacon. They also have protective clothing, hi-vis jackets and a range of equipment in their boot so they can tackle minor tasks there and then, such as removing small overhanging branches.



## Report it

Report potholes and other road and open space issues at [www.n-somerset.gov.uk/connect](http://www.n-somerset.gov.uk/connect)

For the latest updates on roads and travel in North Somerset follow

 @NStravel\_roads

 NStravelandroads

## Out-of-hours cover

Each area officer is on call for seven days at a time on a rota basis. Any out-of-hours issues are referred to them.

# New lives for pre-loved items



Visit

[www.n-somerset.gov.uk/reuse](http://www.n-somerset.gov.uk/reuse)  
or your local parish website for  
more information.

Have you got unwanted household items that could be reused or recycled?

Events are taking place across North Somerset this month and next, giving residents the opportunity to donate any furniture and items suitable for reuse.

North Somerset Council is organising the six events in partnership with Changing Lives.

You could also bring along unwanted small electrical equipment, both working and broken, such as toasters and hairdryers.

Items will be checked by Changing Lives and resold within their stores or recycled through the recycling centres.

## Upcoming events...

**Winscombe** – 8am-noon,  
Thursday 20 September, Winscombe  
Community Centre, Sandford Road

**Clevedon** – 4.30-6pm,  
Monday 24 September,  
Clevedon Town Council, Old Street

**Yatton** – 4.30-6pm,  
Wednesday 26 September,  
Hangstones Pavilion, Stowey Road

**Wrington** – 4.30-6pm,  
Wednesday 3 October, Wrington  
Memorial Hall, Silver Street

**Long Ashton** – 4-6pm,  
Monday 8 October, Long Ashton  
Community Centre, Keedwell Hill

**Felton** – 4-6.30pm,  
Friday 12 October, Felton Village  
Hall, West Lane

## Portishead reuse trial a success



Hundreds of good quality, pre-loved items are finding a new home thanks to a reuse trial at Portishead recycling centre.

North Somerset Council launched a reuse section at the Valley Road centre in April, working with the social enterprise charity Changing Lives.

By early July, more than 750 items had been collected, including nearly 70 chairs, more than 40 pieces of garden furniture and five beds, to be resold in the Changing Lives stores.

There are plans to extend the reuse section at Portishead and also introduce it at Weston-super-Mare and Backwell recycling centres soon.

# Collection day changes

Residents across North Somerset can expect to see improvements to their recycling and waste collection services over the coming weeks as contractors Biffa put in place further changes to collection rounds to improve their efficiency and reliability.

In June, after months of planning, around 80 per cent of households saw a change to their collection arrangements, which has worked well for the majority of residents, but has caused issues for some.

Adjustments are currently being made to help solve the problems. The service will continue to be monitored and improvements made where needed to make sure the 982,542 collections made by crews each month run smoothly.

To report missed waste and recycling collections visit [www.n-somerset.gov.uk/misssedcollection](http://www.n-somerset.gov.uk/misssedcollection) or call **01934 888 802**.





## Speed-up collections by sorting recycling

Sorted recycling boxes help collection crews work more quickly and tidily, and ease congestion on the roads.

Crews take 20 seconds on average collecting recycling from households that have sorted their boxes instead of about two minutes from households that haven't.

To sort your recycling just separate cardboard and glass in one box with a piece of flattened cardboard. In your other box put paper in a carrier bag or stack it at one end, with plastic and cans mixed together at the other.

## Help reduce plastic pollution

The dangers of plastic pollution have been headline news during recent months, but how can you help ease this blight?

North Somerset Council collects and recycles all plastic packaging which is bottle, pot, tub or tray-shaped.

This includes food packaging, health and beauty tubs and tubes, washing



and cleaning packaging such as bottles of fabric softener, tubs of washing powder, surface spray, toilet cleaner and bleach bottles.

But, some plastics can't be collected in recycling boxes.

**Soft plastic packaging** which can be scrunched up in your hand can't be placed into your kerbside box. This includes cling film, plastic bags,



carrier bags, crisp packets, pet food pouches and sweet wrappers.

The council also can't collect any black plastic or polystyrene.

**Hard plastics** – such as children's toys, garden furniture and plastic storage boxes can't go in the kerbside box but they can be taken to the recycling centre.

# Could you be Proud to Care?



Caring people who are great listeners, patient and get on well with people could find that a career in care could be just for them.

North Somerset Council is part of Proud to Care South West – a partnership of 16 local authorities and Health Education England who are working together to raise the profile of a career in care and health.

Three care providers have been commissioned by the council to provide care services across North Somerset.

These are:

- **Alliance Living Care** – covering Weston-super-Mare
- **Notaro Homecare** – covering Banwell, Hewish, Kewstoke, Locking, Wick St Lawrence, Worle, Backwell, Blagdon, Churchill, Congresbury, Dundry, Failand, Felton, Langford, Long Ashton, Nailsea, Redhill, Sandford, Tickenham, Winford and Winscombe
- **Brunelcare** – covering Abbots Leigh, Clevedon, Kingston Seymour, Leigh Woods Pill and Portishead.

To get careers advice about jobs, see the latest opportunities with these and other care providers, and read inspiring stories – such as Philip, who found his calling when he became a care and support worker, helping people to live as independently as possible – go to [www.n-somerset.gov.uk/proudtocare](http://www.n-somerset.gov.uk/proudtocare)

## Improving the lives of our local community

As the chosen provider for North Somerset Council, we are proudly leading the way, delivering vital community care across **Worle, Yatton, Congresbury, Backwell, Nailsea, Churchill and the rural villages in between.** Join our family of carers today and be part of this incredible team.

Our carers enjoy guaranteed hours, paid mileage, consistent runs, paid holiday, the very best **training and so much more...** Talk to us today, and kick start a career full of rewards.

We are delighted to be flying the flag for the **North Somerset Proud to Care initiative.**

**notaro**   
HOME CARE



**notaro**   
HOME CARE

To join our team please visit  
[www.n-somerset.gov.uk/proudtocare](http://www.n-somerset.gov.uk/proudtocare)  
or call Notaro Homecare on **01934 422800**

**Proud to Care**  
NORTH SOMERSET

Notaro Homecare Ltd, 25 – 31 Boulevard, Weston-super-Mare, BS23 1NX | [www.notarohomecare.co.uk](http://www.notarohomecare.co.uk)

Alliance Living Care is pleased to be part of Proud to Care North Somerset offering high quality, friendly and professional services designed around our customers' needs.

We're an ambitious team, and North Somerset Council's chosen provider of care services in Weston-super-Mare.

If you have any of the following qualities, then you could be someone we want to work with us:

- Are you passionate about looking after and helping other people?
- Do you want to make a difference?
- Do you like meeting different people and sharing new experiences?

You don't need to have any prior experience as we'll train and mentor you as part of your role with us.



## Work with us



To apply now, call Alliance **03000 121 447** or visit [www.n-somerset.gov.uk/proudtocare](http://www.n-somerset.gov.uk/proudtocare).

## We're hiring Carers!



## Do you enjoy helping people?

We are delighted to be part of Proud to Care North Somerset.

As North Somerset Council's chosen provider of home care in Clevedon and Portishead along with our team in Waverley Court (Portishead), we have **lots of exciting roles available** in these areas!

We provide our Community Carers with excellent working conditions and guaranteed hours. We also **provide free training and pay for travel**.

To find out more about these job opportunities see [www.n-somerset.gov.uk/proudtocare](http://www.n-somerset.gov.uk/proudtocare) or call **Brunelcare** to discuss the vacancies we are offering.



To apply now, call **01275 879547** or email [clevedonrecruit@brunelcare.org.uk](mailto:clevedonrecruit@brunelcare.org.uk)



INVESTORS  
IN PEOPLE

Accredited  
Until 2020

We are obliged to ask all successful applicants to complete a DBS disclosure form for which we pay. Brunelcare is an equal opportunities employer. Registered Charity 201555.



Public Health  
England

# HOW WILL YOU QUIT THIS STOPTOBER?

There's lots of support available,  
so **talk to your local Stop  
Smoking Service.**

 Search Stoptober

 /stoptober  @stoptober

**STOP**TOBER

BECAUSE THERE'S ONLY  
**ONE**YOU





# Get vocal, be heard

Residents who are on the receiving end of council services often have good ideas about how to make them better.

**North Somerset Council strives to provide the best standards of customer care, listen to residents' views, and take them into account, where possible, when making future decisions.**

## You said:

The weather will soon get colder again. What are you doing to support homeless people in North Somerset during autumn and winter?

## We did:

North Somerset Council works year-round to support people who become homeless and help prevent hundreds of households becoming homeless in the first place.

This autumn, a health and wellbeing day will take place in Weston-super-Mare for homeless people to get help and advice.

The event is being organised by North Somerset Council's health trainer service and Somewhere to Go, a support centre in Weston-super-Mare

which offers a safe place for rough sleepers and disadvantaged adults to go three times a week.

It takes place on Friday 14 September, from 10am to 2pm, at Somewhere to Go.

It is open to anyone who is homeless, sofa surfing or in temporary accommodation and wants to chat to organisations and find out information about services around Weston.

Individuals and organisations represented include community nurses, Avon and Wiltshire Mental Health Partnership NHS Trust, Alliance Living, the homeless prevention team at North Somerset Council, Beaconsfield Vets to do health checks on dogs, Bright hairdressers to cut people's hair, the Citizens Advice Bureau, Addaction, Health Watch North Somerset and more.

Anyone concerned about a rough sleeper should contact StreetLink, the national rough sleeping helpline, which alerts local services: **0300 500 0914** or [www.streetlink.org.uk](http://www.streetlink.org.uk)

An In Crisis leaflet has been produced by local charity Keysteps, which details help and advice available to homeless people.

Visit [www.wdgb.org.uk/in-crisis-leaflet](http://www.wdgb.org.uk/in-crisis-leaflet) for details of organisations which can help homeless and vulnerable people.

Anyone wanting to make a donation to Somewhere to Go or find out more about their work can visit [www.somewheretogo.org.uk](http://www.somewheretogo.org.uk)

Last month the Government announced its rough sleeping strategy. Backed by £100m of funding, it aims to support everyone off the streets and into a home, and to end rough sleeping entirely by 2027. For more details visit [www.gov.uk](http://www.gov.uk) and search for rough sleeping strategy.

For more information about how the council supports homeless people or households at risk of homelessness, contact the council's housing advice team on **01934 426 330** or visit [www.n-somerset.gov.uk/homeless](http://www.n-somerset.gov.uk/homeless)

# Your views

## Dear Editor,

Thank you for another excellent walk in *Life* magazine, this time around Claverham (Summer Special).

This walk will actually make a good Geocaching circuit which I will be setting up over the coming weeks.

Geocaching is an outdoor recreational activity in which participants use a GPS receiver or mobile device and other navigational techniques to hide and seek containers, called 'geocaches' or 'caches', at specific locations marked by co-ordinates all over the world.

If anyone wants to learn more about geocaching and join up, visit the main website – [www.geocaching.com](http://www.geocaching.com)

*Bob Selby, Nailsea*

## Dear Editor,

Did you know that every week, 27 people in North Somerset hear the devastating news they have cancer?

27 more will need Macmillan's counselling services and emotional support.

27 more will need medical support from Macmillan nurses and GPs.

27 more will need advice from Macmillan Support Line.

27 more will need financial support through grants and benefits advice.

And that's not counting the effect on family and friends...

Macmillan Cancer Support is looking for volunteers to form a fundraising group in Weston-super-Mare to raise money for local cancer services, such as the recently opened Macmillan Cancer Information and Support Centre at Weston General Hospital.

It is only with support from our local community we can future-proof local cancer services.

Fundraising can be varied, from quizzes and collections to coffee mornings. You'll receive support from your local fundraiser and resources.

Call 07710 307 511 or email [kmartin@macmillan.org.uk](mailto:kmartin@macmillan.org.uk)

*Kate Martin, regional fundraising volunteer manager*

Send your items to  
Editor, North Somerset Life  
North Somerset Council  
Floor 1, Town Hall  
Weston-super-Mare, BS23 1UJ  
or email [editor@n-somerset.gov.uk](mailto:editor@n-somerset.gov.uk)

@NorthSomersetC

NorthSomersetCouncil

NorthSomersetLife

Items submitted without a valid name and address will not be considered for publication. Please tell us if you do not want your details published. Due to space restrictions letters may be edited.

North Somerset Life is on Instagram. Tag [#northsomersetlife](https://www.instagram.com/northsomersetlife) to share your photos



@DRJONREES



@UNFEIGNEDPHOTO



@JOAOMAIAPHOTOGRAPHY



Many topics are covered on Twitter and Facebook and last month these issues were raised...

"Ok Twitter, help me out – trying to learn not score points. Black 'broccoli' plastic that (@sainsburys) say is recyclable but local council won't take ANY black plastic in recycling. Who's right if anyone?"

**North Somerset Council:** Black plastic can't be read correctly by the laser that sorts the recycled plastic at the depot. It absorbs light rather than bouncing it back. If consumers put pressure on supermarkets not to use it they might change.

Reported massive pothole on Walliscote/ Clevedon road junction. I see nothing has happened. Will it be filled in or do we have to keep damaging our cars?"

**North Somerset Council:** If it's not been filled in already it means it doesn't qualify for emergency filling. If it is on the list for filling the next time the crew is in the area, it should be marked with paint. The area officers have to follow national intervention level guidelines when assessing potholes for filling.

North Somerset Life is the award winning magazine for the people of North Somerset. Your copy should be delivered with your post unless you use Royal Mail's opt out service to block unaddressed mail.

You can download this issue and back issues from [www.n-somerset.gov.uk/nsl](http://www.n-somerset.gov.uk/nsl) or pick copies up from council buildings.

Coming next issue:

- Winter Focus special
  - Keep warm and well
  - Salting routes
  - Community meals

Sign up to *Life's* online edition and receive news straight into your inbox. Visit [www.northsomersetlife.co.uk](http://www.northsomersetlife.co.uk)

[www.n-somerset.gov.uk](http://www.n-somerset.gov.uk)

Report it. Request it. Pay for it.  
[www.n-somerset.gov.uk/connect](http://www.n-somerset.gov.uk/connect)

9am – 5pm Mon – Fri

**Council Connect:** for all streets and open spaces enquiries:  
01934 888 802

**Care Connect:** for all social services enquiries:  
01275 888 801  
[care.connect@n-somerset.gov.uk](mailto:care.connect@n-somerset.gov.uk)

**Main switchboard:**  
01934 888 888

**Emergency (out of hours):**  
01934 622 669

North Somerset Council  
Town Hall  
Weston-super-Mare BS23 1UJ

# Tide timetables for Weston-super-Mare

## Tide facts

Approximate high water times at:

- Clevedon: 10 min
- Portishead: 18 min
- later than Weston-super-Mare.

Weather conditions which differ from the average will have an effect on the differences between predicted and actual tide times.

Strong winds can hold the tide in or push the tide out. Air pressure can also cause fluctuations in predicted levels.

Tidal predictions for Weston-super-Mare have been computed by the Proudman Oceanographic Laboratory.

Copyright reserved.

[www.n-somerset.gov.uk/tidetimes](http://www.n-somerset.gov.uk/tidetimes)

### SEPTEMBER 2018

Date	High water		Low water		High water		Low water	
	Time	Height (M)	Time	Height (M)	Time	Height (M)	Time	Height (M)
	AM				PM			
1 Sat	10:58	10.79	04:36	1.68	23:20	10.53	16:45	1.94
2 Sun	11:36	10.22	05:07	2.00	–	–	17:23	2.24
3 Mon	00:01	9.93	05:52	2.31	12:22	9.67	18:18	2.56
4 Tue	01:00	9.39	06:56	2.67	13:34	9.25	19:36	2.92
5 Wed	02:29	9.16	08:34	2.94	15:10	9.35	21:33	2.85
6 Thu	03:59	9.61	10:13	2.52	16:35	10.12	22:49	2.18
7 Fri	05:18	10.52	11:21	1.84	17:47	11.14	23:57	1.47
8 Sat	06:22	11.50	–	–	18:45	12.04	12:24	1.15
9 Sun	07:14	12.26	00:52	0.80	19:35	12.65	13:13	0.58
10 Mon	08:01	12.70	01:39	0.35	20:18	12.97	13:58	0.27
11 Tue	08:43	12.88	02:22	0.17	20:59	13.04	14:39	0.20
12 Wed	09:22	12.82	03:02	0.25	21:39	12.84	15:19	0.37
13 Thu	10:01	12.47	03:40	0.55	22:18	12.31	15:55	0.75
14 Fri	10:39	11.78	04:13	1.02	22:55	11.48	16:27	1.26
15 Sat	11:14	10.87	04:44	1.57	23:31	10.50	16:57	1.82
16 Sun	11:50	9.93	05:11	2.10	–	–	17:30	2.35
17 Mon	00:07	9.55	05:47	2.60	12:29	9.08	18:12	2.87
18 Tue	00:54	8.74	06:33	3.11	13:33	8.43	19:13	3.40
19 Wed	02:13	8.21	07:47	3.60	15:08	8.34	21:29	3.56
20 Thu	03:51	8.41	10:06	3.36	16:38	9.04	22:38	2.81
21 Fri	05:10	9.27	11:01	2.57	17:36	10.03	23:23	2.06
22 Sat	06:00	10.19	11:43	1.92	18:19	10.85	–	–
23 Sun	06:40	10.89	00:04	1.54	18:57	11.39	12:23	1.50
24 Mon	07:15	11.34	00:43	1.25	19:32	11.71	13:01	1.27
25 Tue	07:48	11.65	01:21	1.10	20:04	11.94	13:38	1.15
26 Wed	08:20	11.90	01:58	1.00	20:37	12.11	14:13	1.07
27 Thu	08:53	12.06	02:34	0.95	21:11	12.14	14:50	1.07
28 Fri	09:27	12.01	03:09	1.02	21:47	11.93	15:24	1.22
29 Sat	10:01	11.69	03:44	1.25	22:22	11.44	15:55	1.51
30 Sun	10:37	11.13	04:13	1.60	23:01	10.76	16:23	1.84

### OCTOBER 2018

Date	High water		Low water		High water		Low water	
	Time	Height (M)	Time	Height (M)	Time	Height (M)	Time	Height (M)
	AM				PM			
1 Mon	11:16	10.45	04:43	1.95	23:45	10.02	17:01	2.19
2 Tue	–	–	05:27	2.33	12:04	9.77	17:57	2.59
3 Wed	00:47	9.35	06:35	2.77	13:19	9.25	19:22	2.98
4 Thu	02:14	9.07	08:19	3.05	14:54	9.33	21:20	2.87
5 Fri	03:46	9.54	10:00	2.59	16:22	10.12	22:38	2.15
6 Sat	05:06	10.53	11:10	1.83	17:33	11.19	23:46	1.38
7 Sun	06:08	11.55	–	–	18:30	12.07	12:10	1.10
8 Mon	06:57	12.27	00:37	0.75	19:16	12.59	12:56	0.59
9 Tue	07:40	12.64	01:20	0.42	19:57	12.82	13:37	0.38
10 Wed	08:19	12.77	01:59	0.37	20:36	12.85	14:15	0.41
11 Thu	08:57	12.72	02:35	0.51	21:13	12.66	14:50	0.60
12 Fri	09:33	12.41	03:08	0.80	21:49	12.17	15:22	0.93
13 Sat	10:09	11.79	03:37	1.20	22:24	11.39	15:50	1.37
14 Sun	10:41	10.92	04:02	1.66	22:55	10.45	16:17	1.85
15 Mon	11:12	10.00	04:29	2.13	23:27	9.53	16:47	2.34
16 Tue	11:45	9.15	05:00	2.59	–	–	17:26	2.83
17 Wed	00:06	8.72	05:44	3.08	12:37	8.43	18:22	3.34
18 Thu	01:14	8.08	06:50	3.58	14:17	8.10	19:52	3.72
19 Fri	03:02	8.07	08:57	3.80	15:52	8.64	22:07	3.21
20 Sat	04:25	8.85	10:30	3.02	16:56	9.61	22:54	2.40
21 Sun	05:21	9.83	11:15	2.25	17:42	10.54	23:36	1.78
22 Mon	06:03	10.69	11:54	1.71	18:22	11.25	–	–
23 Tue	06:40	11.33	00:16	1.37	18:59	11.73	12:34	1.37
24 Wed	07:17	11.78	00:55	1.13	19:35	12.06	13:12	1.16
25 Thu	07:52	12.10	01:32	0.97	20:11	12.26	13:50	1.03
26 Fri	08:28	12.28	02:10	0.90	20:49	12.31	14:27	1.00
27 Sat	09:04	12.26	02:46	0.95	21:27	12.13	15:02	1.12
28 Sun	08:43	11.98	02:23	1.16	21:07	11.68	14:38	1.38
29 Mon	09:22	11.45	02:56	1.50	21:50	11.00	15:12	1.71
30 Tue	10:08	10.75	03:31	1.87	22:40	10.24	15:54	2.08
31 Wed	11:02	10.06	04:20	2.27	23:45	9.60	16:55	2.48

*“I chose Kingfisher because it had made an excellent job of my daughter’s house and I like to support local business when possible. The customer service was very good and they were extremely helpful, efficient and made a first class job with the installation. I would definitely recommend Kingfisher to my friends.”*

*- Barbara Biggin, Cheddar*



*“Everyone at Kingfisher is pleasant, helpful, a pleasure to deal with and have on site. We are extremely pleased with all aspects of our installation and the after sales service has been excellent. A first class company whom we have no hesitation in recommending.”*

*- Mr and Mrs Whittle, Draycott*



*“Kingfisher is a local, friendly, family set up. We were given the opportunity to look at previous installations locally which reassured us that we had made the right choice. We would definitely recommend Kingfisher.”*

*- Mr and Mrs Parker, Cross*

8 Mill Batch Farm,  
East Brent,  
Near Highbridge,  
TA9 4JN  
Tel 01278 760616

**Kingfisher**   
The family firm established 1986  
Windows • Doors • Cladding • Conservatories

14a Broad Street  
Wells,  
BA5 2DN  
Tel 01749 671431

[hello@thekingfisherfamily.com](mailto:hello@thekingfisherfamily.com) [www.thekingfisherfamily.com](http://www.thekingfisherfamily.com)