

# NORTH SOMERSET

ISSUE 139 – MAY/JUNE 2018

# LIFE

The Red Arrows  
**return**



ALSO

LIVE WELL  
FOR LONGER

See inside for the special pull-out



 North  
Somerset  
COUNCIL

# NEW PLAN FOR NORTH SOMERSET

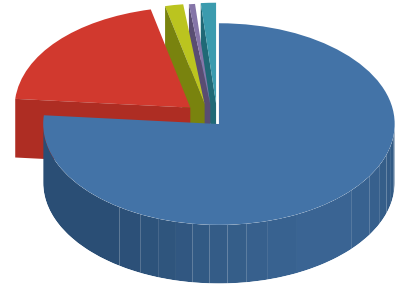


A new joint plan to ensure North Somerset remains a safe place to live and work has been created by Sue and the North Somerset Community Safety Partnership. The plan identifies priorities to build strong, resilient communities, to tackle crime, and to protect vulnerable people. It also focuses on how working together we will achieve the best outcomes for individuals; families and communities.

## YOUR POLICING POUNDS

### WHERE DOES THE MONEY GO?

- Police Officers, Staff and PCSOs £218.2m
- Running Expenses £57m
- Capital Funding £5m
- Office of the PCC £1.4m
- PCC victim and crime related support services £3.4m



I have been lobbying hard to secure the best possible funding arrangements for policing.

In December, the Government made it clear that an increasing proportion of policing costs will have to be met by local council taxpayers.

I recognise that any increase in household bills will be felt by you and I want to assure you that the policing you receive on a local level through your neighbourhood policing teams will be unchanged thanks to this increase in your council tax.

Neighbourhood policing is at the heart of our communities and is essential to ensuring North Somerset remains a safe place to live and work.

*Sue Mountstevens*

**Sue Mountstevens**

Police and Crime Commissioner for Avon and Somerset



AN AVERAGE  
**BAND D**  
HOUSEHOLD  
PAYS  
£193.81

300+  
NEW POLICE OFFICERS

81%  
PEOPLE IN FAVOUR  
OF A RISE

WE SPOKE  
TO OVER  
3,500  
PEOPLE

2018/19  
**£285M**  
£176M FROM  
GOVERNMENT  
£109M FROM  
RESIDENTS



**AMBITION FOR EVERY PRIMARY SCHOOL TO BE ASSIGNED A NAMED PCSO  
+ EVERY SECONDARY SCHOOL A NAMED PCSO OR BEAT MANAGER**

### HELP FOR COMMUNITY GROUPS

Communities and voluntary organisations in North Somerset can benefit from up to £3,000 to tackle issues in your local area.

The Commissioner's Community Action Fund was set up in 2013 and so far has awarded over £66,000 to projects in North Somerset from youth work to support for victims of domestic abuse.

Sue said: "It's a privilege to be able to continue to support such a variety of projects and initiatives which are clearly making a difference on the ground."

Local community groups are invited to apply for grants to help initiatives, which support the PCC's priorities.

Applications are welcome all year, visit [www.avonandsomersetpcc.gov.uk](http://www.avonandsomersetpcc.gov.uk) to find out more.



# Dear reader,



I hope you all had a pleasant Easter.

Spring is also the start of the new financial year when we have to agree new budget reductions for the coming year – well, that is what it has meant for the last eight years.

Recent signs of the national budget recovering and North Somerset getting near to reaching its long-term savings target, due to excellent work by staff in controlling some of our costs, means things are looking a bit more hopeful.

You may also have heard that the council has bought the Sainsburys' shopping centre in Worle. We had the opportunity to acquire this site which will produce an annual income that we can spend on council services that have been under so much pressure. Along with local businesses, we will look at other opportunities to invest in North Somerset. See page 10 for more details.

I am aware that getting through these difficult cuts is very hard for some but it is now an opportunity to welcome at least the start of better news.

While there may be a better economic outlook over the next few years, it is tragic to see the continuing rise in anger and discontent leading to more violence and hatred on our streets. Poison in Salisbury, the rise in murders in London, increasing knife crimes amongst the young and, as the Times reported recently, real abuse and hatred on the extreme fringes of politics.

What sort of example is that and is there really any excuse when we live in such a privileged society? A free society still has to have rules and standards.

North Somerset has become a very successful and popular place to live and work so it is not surprising that the council has a lot of quality staff. It follows that occasionally officers are poached by other councils (often to come back), our current Chief Exec Mike Jackson is leaving us in the summer to join Bristol City Council. Sorry to see him go but we wish him well in his new task and look forward to continuing to work with him as part of our partnership within the West of England.

Congratulations to Weston-super-Mare on being awarded the Purple Flag for the third year running. It is given in recognition of a safe and vibrant night time economy due to the partnership work of the police, local businesses, the voluntary sector and council staff.

Councillor Nigel Ashton, Leader of North Somerset Council

# Contents

- 4 News update
- 10 Council's commercial strategy
- 12 Recycling days and routes changing soon
- 16 Walk – Seven Streams near Long Ashton

## Live Well For Longer pull-out

- ii Promoting wellbeing and independence
- iv Who to contact
- vi Future-proof your home
- viii More help at home

- 20 Weston Vision
- 22 Road investment paying off
- 27 Mental health and wellness festival
- 31 Contact details

10

12



This publication is available in large print, Braille or audio formats on request. Help is also available for people who require council information in languages other than English. Life editor: 01275 884 139

# Volunteers needed to inspire reading

Volunteers are needed to help run this year's Summer Reading Challenge in North Somerset libraries and inspire children to keep reading during the school holidays.

The annual scheme encourages children aged four to 11 to keep reading throughout the summer holidays and have fun visiting the library.

This year's challenge runs from Saturday 14 July to Saturday 8 September and volunteers aged 14 and over are needed to talk to children about the books they have read and hand out rewards.

Flexible volunteering sessions are available at libraries across North Somerset during the summer and full training will be provided.

Anyone with a few hours to spare who is enthusiastic about encouraging children to read is welcome to apply.

No previous experience of volunteering or working in a library is needed.



To apply to volunteer visit [www.northsomersetlibraryvolunteers.wordpress.com](http://www.northsomersetlibraryvolunteers.wordpress.com), email [library.volunteers@n-somerset.gov.uk](mailto:library.volunteers@n-somerset.gov.uk) or call 01934 426 657.

The closing date for applications is Monday 11 June.



# Could you be #ProudtToFoster?

Foster carers are needed in North Somerset to help provide a warm and welcoming home for children and young people.

Foster Care Fortnight takes place between Monday 14 and Sunday 27 May and the message is – 'we need you'.

There are many myths about who can foster. Sadly some people don't come forward because they think they wouldn't be accepted, but this isn't the case.

There are some set criteria but if potential carers don't meet them yet, the fostering team is happy to discuss how they might in the future.

North Somerset Council's fostering team is encouraging all potential carers to get in touch during the awareness fortnight.

About 230 children and young people from North Somerset are in foster care at any one time, unable to

live with their birth families for many reasons.

Due to a shortage of foster carers, they will sometimes have to be placed in

expensive private foster placements outside the area.

This means children who cannot live with family, through no fault of their own, might also have to live away from their schools and people who have supported them.

Fostering is a challenging and demanding role but it is also hugely rewarding and can make a massive difference to the lives of children and young people.

A wide range of carers are needed, reflecting society as a whole. Foster carers receive regular free training and financial and emotional support from the council.

[www.n-somerset.gov.uk/fostering](http://www.n-somerset.gov.uk/fostering) or call 01275 888 999

[fosteringnorthsomerset](#) • [@FosteringNS](#)

# TROPICANA

## LATEST



Arts, theatre, food and fun will make a springtime to remember at the Tropicana in Weston-super-Mare.

Upcoming events at the Marine Parade venue include...

- **Promise of Departure** by Panta Rei, 7.30pm, Thursday 3 May. A dance performance exploring vulnerability and strength.
- **Funland @ The Tropicana** – Saturday 5 May – Sunday 2 September. The outdoor funfair returns.
- **Contact Gonzo** – Japanese dance performance - 7.30pm, Saturday 19 and 2.30pm Sunday 20 May.
- **One Man and His Cow** by Living Spit – 7.30pm, Tuesday 22 May. Theatre performance
- **Transend Skate Park** – Saturday 26 May – Friday 1 June. An indoor skate, scooter and BMX event.
- **Fabulous Bacon Boys** by Living Spit – 7.30pm, Tuesday 19 June. Theatre performance.

## Cream or jam first?

What is the correct way to make a cream tea?

Devon does it one way, Cornwall the other – so it will be down to the people of North Somerset to help decide.

To coincide with National Cream Day on Friday 29 June, pop into the Bay Café to try a delicious cream tea and cast your vote.



For more details of all events and to book tickets, visit [www.tropicana-weston.co.uk](http://www.tropicana-weston.co.uk) • The Bay café: 01934 427 300



## Air Festival returns

More than a hundred thousand people are expected to descend on Weston-super-Mare's seafront next month when the popular air festival returns.

Weston Air Festival is one of the highlights in the events calendar with spectacular air displays from the iconic Red Arrows and more.

The free event takes place on Saturday 23 and Sunday 24 June on the seafront and Beach Lawns.

There will be trade stands and activities to entertain the whole family.

For the latest updates visit [www.westonairfestival.com](http://www.westonairfestival.com)

Facebook icon WestonSeafront • Twitter icon @WestonSeafront

Editorial credit: /Shutterstock.com



# Do it online

## Read your council tax and benefits letters online

Residents in North Somerset who receive housing benefit or council tax support can now read their documents and letters online on the council website.

The online service means you can access your account at any time of the day or night and have access to all your entitlements without having to call or visit the council.

Anyone who has already signed-up to receive their housing benefit or council tax support online just needs to select 'register for benefit services' and then follow the instructions.

If you still receive letters by post, you can sign-up to receive them by email instead.

You will receive them quicker and they are stored securely in your account.

To sign-up visit [www.n-somerset.gov.uk/myaccount](http://www.n-somerset.gov.uk/myaccount) and select 'view your benefit claim summary'.

Just read the declaration and tick the box to subscribe to receive the e-notifications.

## Help improve the council's website

Testers are still needed to give feedback on North Somerset Council's website to help make it better in the future.

North Somerset residents who are able to visit the Town Hall in Weston-super-Mare or Castlewood office in Clevedon are needed to use the website to demonstrate how easy they find it to do things and find information.

The informal one-to-one sessions last 90 minutes.

Testers can't be paid but refreshments will be available.

[www.n-somerset.gov.uk/myaccount](http://www.n-somerset.gov.uk/myaccount)

For more information visit [www.n-somerset.gov.uk/websitetesting](http://www.n-somerset.gov.uk/websitetesting)

## School admissions arrangements set

Admission arrangements for the 2019/20 academic year have now been set following a public consultation.

The policies set out how school places are allocated across the area.

North Somerset Council co-ordinates admissions but some schools also consulted on their own admission arrangements.

View the final policies at [www.n-somerset.gov.uk/schooladmissions](http://www.n-somerset.gov.uk/schooladmissions)



## Town Hall opening hours changing

Opening hours at the Town Hall in Weston-super-Mare are changing this month.

From Tuesday 8 May the new opening hours for the reception and library in the Walliscote Grove Road building will be:

### Reception

- Monday to Friday, 8.30am-5pm
- Saturday, 9am-2.30pm

### Library

- Monday to Friday, 8.30am-6pm
- Saturday, 9am-4pm

# Have your say in Portishead road improvement consultation



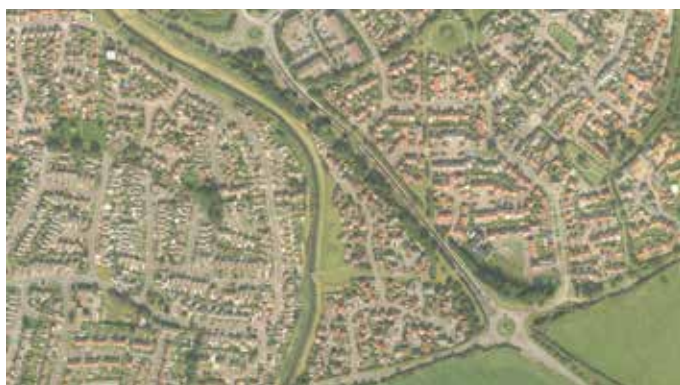
Residents have the chance to comment on planned improvements to the A369 Wyndham Way in Portishead.

A six week consultation runs online from Monday 30 April to Sunday 10 June, with a drop-in event from 2pm to 8pm on Wednesday 23 May, in the Feddon Room at the Folk Hall, Portishead.

Engineers will be on hand during the drop-in session to discuss the plans and answer questions.

The proposed scheme will see a second lane installed heading into Portishead between Sheepway and the 'sail' roundabouts.

The aim is to increase traffic capacity on Wyndham Way and Portbury Hundred so that a further scheme can be carried out at junction 19 to reduce standing traffic on the M5 in the afternoons.



For more information and to have your say visit [www.n-somerset.gov.uk/wyndhamway](http://www.n-somerset.gov.uk/wyndhamway)

## Facelift for Portishead Precinct

Portishead Precinct is set for a facelift this summer thanks to a pot of money from developers.

North Somerset Council is using Section 106 contributions to give the precinct at the northern end of Portishead High Street a much-needed facelift.

This money is paid by developers to help fund community and social infrastructure.

The £102,000 scheme will involve removing existing slabs and replacing them with smaller, more modern ones, plus associated drainage works and some landscaping.

The work is planned to take place this summer and be completed by the autumn.

Before works starts, the council will consult with local businesses and partners, such as Portishead in Bloom, on the final look of the scheme, how disruption will be kept to a minimum, and access maintained for businesses in the area.

The council's contractors Skanska will be carrying out the work and, under new contractual arrangements, will be looking to employ as many local labourers as possible.



Have you heard?

Happy Days are coming to Weston-super-Mare, Opening late Summer 2018!

**We are opening a new nursery/pre-school in your area**

If you are looking for high quality childcare and early years education that meets the individual needs of your child, find out why Happy Days could be just what you are looking for. With over 25 years experience looking after children, we understand that no one is more precious than your little one.



**Happy Days**  
Where Children Shine



**0800 783 3431**

[westonsm@happydaysnurseries.com](mailto:westonsm@happydaysnurseries.com) [www.happydaysnurseries.com](http://www.happydaysnurseries.com)  
Happy Days Weston-super-Mare, Beaufighter Road, Weston-super-Mare, BS24 8EE

# Be aware of ticks

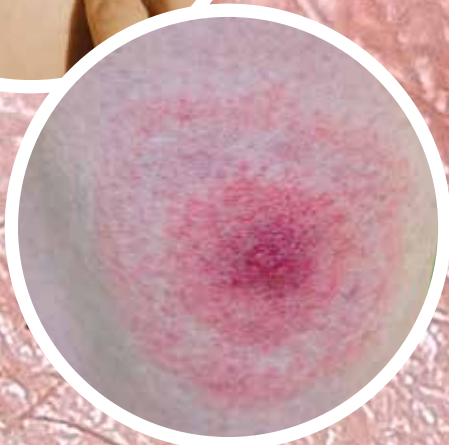
Sunny spring weather brings lots of opportunities to enjoy the countryside but residents are being reminded to beware of ticks before they head out.

Ticks are small, spider-like creatures that feed on the blood of animals and people and their bites can cause very serious conditions, including Lyme disease.

They can be found throughout the year but are most active between spring and autumn so be careful when walking through fields or woodland.

Damp, shady dense vegetation, dead leaves or long grass provide the perfect habitat, near to deer, small mammals or wild birds.

Ticks don't jump or fly but climb onto people or animals as they brush past. They bite into the skin to attach themselves and start feeding on the blood of their new host.



## To avoid being bitten...

- walk on clearly defined paths
- avoid dense vegetation
- wear light-coloured clothing so ticks are easier to spot and brush off
- use repellents such as DEET
- make it a habit to check your clothes and body regularly when you're outdoors and again when you get home.

Look out for anything as tiny as a freckle or speck of dirt.

Ticks prefer warm places on the body, especially the groin area, waist, armpits, behind the knee and along hairlines.

Young children are more commonly bitten around the head so be extra careful to check around the neck, behind the ears and scalp.

## What if I've been bitten?

If you have been bitten, remove the tick as soon as possible using a pair of sterilised tweezers and grasping the tick as close to your skin as possible.

Pull upwards slowly and firmly, totally removing as much of the tick as you can.

Apply antiseptic to the bite area and keep an eye on it for several weeks to check for any changes.

If you have been bitten, contact your GP or call NHS 111 if you begin to feel unwell with flu-like symptoms or develop a spreading circular red rash. Remember to tell them you were bitten by a tick or have recently spent time outdoors.

**For more information search for 'ticks' or 'Lyme disease' at [www.nhs.uk](http://www.nhs.uk) or [www.gov.uk](http://www.gov.uk)**





# Enforcing new anti-social behaviour orders

Thirty people have been reported so far this year for contravening new anti-social behaviour orders.

Public Space Protection Orders (PSPOs) were introduced across the area last October to make public places in North Somerset more welcoming for residents and visitors.

They tackle anti-social behaviour by individuals or groups of people in public places and about 100 designated council staff, police officers and Business Improvement District (BID) wardens were trained to enforce them.

There was an initial warning period during November and December

when officers gave verbal warnings before the enforcement started earlier this year.

In the first four months of issuing fixed penalty notices, 30 people have been reported for contravening the orders.

These include 12 for littering, one for dog fouling, five for dogs off leads in a place they are supposed to be on a lead, and more.

The new orders have replaced existing dog control orders, designated public place orders that help the police tackle alcohol related anti-social behaviour and, where appropriate, local byelaws.



For more information about the orders visit [www.n-somerset.gov.uk/pspo](http://www.n-somerset.gov.uk/pspo)



## Raising awareness of democracy

Young people across North Somerset will be learning about the importance of democracy during a special week soon.

National Democracy Week runs from Monday 2 to Sunday 8 July and a range of events will be taking place across the area to raise awareness about democracy and the importance of voting.

Events, run by North Somerset Council, will include explaining the differences between local and central government.

One session will be about the budgeting process of the local authority and participants will get the chance to set their own financial priorities.

The week will conclude with a debate in the New Council Chamber at the Town Hall in Weston-super-Mare with local politicians.

Other events will be held at participating schools across the area.

Anyone interested in getting involved can contact Alun Davies [alun.davies@n-somerset.gov.uk](mailto:alun.davies@n-somerset.gov.uk)

# Commercial investments to boost council coffers



Commercial investments are now providing a much-needed income stream for North Somerset Council to help pay for frontline services and drive economic growth.

In March, the council bought North Worle District Centre in Weston-super-Mare for £38m.

The thriving 11.8-acre commercial site, next to Junction 21 of the M5, includes a supermarket (Sainsbury's), petrol station, retail warehouse (TK Maxx), five other retail units, a pub and a 504-space car park.

This is the first acquisition in the council's commercial investment strategy.

Within the next couple of years, North Somerset Council expects to receive no funding from central government so it needs to find alternative ways of raising money.

At the same time, the council faces significant increases in demand for services, especially in adult and children's social care.

The site is let under a single lease to Sainsbury's and was bought for £37.95m using a bank loan.

The net initial yield of about six per cent is immediately generating a profit over and above the costs of borrowing.

The council estimates it will make a net return of more than £400,000 a year.

This money will then be invested back into the council to help fund and protect local services.

Malcolm Coe, head of finance at North Somerset Council, said: "The council can only find so many savings and then it has to find other ways of generating income.

*"We need to be more entrepreneurial, as a lot of wealthier councils have been for a number of years."*

This is the first purchase since councillors approved the creation of a £100m Property Investment Fund, to be funded through unsupported borrowing.

Malcolm added: "We are not making speculative purchases - we're only looking to buy relatively safe sites which offer an immediate return from day one, not any we would have to develop to generate a return."

At North Worle District Centre, 100 per cent of the rental income is secured on a single overriding lease to Sainsbury's. The supermarket continues to run and manage the site on a day-to-day basis.

The current lease ends in 2024 and it is subject to rent reviews every five years. The next rent review is March next year, and the rent can only increase, not decrease.

North Somerset Council's director of development and environment, David Carter, said: "The more we own and control, the more we can shape our local area.

"These investments will provide us with a great opportunity to influence sites and enhance our assets over time.

"Businesses can see that the council is confident in the future of North Somerset and so they should be too."



# FAQs

## How can you afford £38m if you're cutting services and raising council tax?

The money is coming from a bank loan and the investment will offer an immediate return over and above the cost of borrowing. This will help fill the gap left by reduced government funding and help pay for frontline services.

## A return of £400,000 a year doesn't sound much on a £38m investment.

North Somerset Council's ability to generate a higher return is restricted by the way local authority accounting works. It has to repay an element of the debt alongside interest payments on an annual basis.

## If the site is so profitable, why was it sold?

The previous owners (British Land) wanted to move on to more speculative, higher-risk investments for potentially bigger returns – rather than this low-risk one.

## Why didn't Sainsbury's buy it?

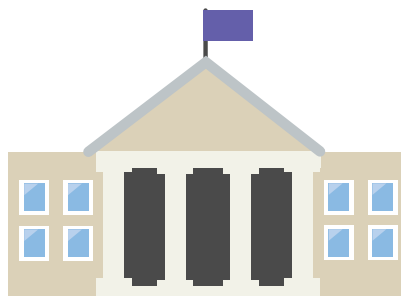
Sainsbury's policy is to lease sites, not buy them.

## What happens if Sainsbury's does not renew its lease in 2024?

The council doesn't expect this to happen, as it is one of the best performing Sainsbury's stores outside London.

## Are you introducing parking charges?

There are no plans to include supermarket parking charges in the council's upcoming review of parking charges across North Somerset.



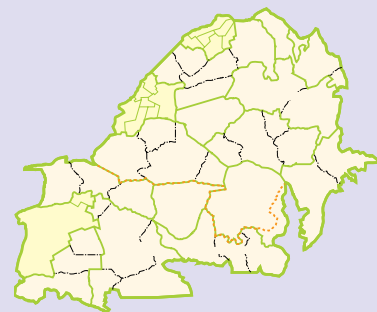
By 2020 North Somerset Council expects to receive no funding from central government.

At the same time there's an increasing demand for services, particularly social care.



The council needs to find new ways of generating income (including commercial investments), to fund services.

It wants to invest in sites, promote economic growth, regenerate and shape the future of North Somerset.



It also wants to guarantee a substantial income for years to come.

[www.n-somerset.gov.uk/investment](http://www.n-somerset.gov.uk/investment)

# Changes to collection days this summer



Collection days are changing in North Somerset soon to improve the reliability and efficiency of the recycling and waste service.

North Somerset Council's contractor Biffa is changing both routes and collection days for the majority of residents across the area.

**Life takes a closer look...**

## What is happening?

**From Monday 4 June, collection days will change for about 80 per cent of households in North Somerset.**

The patterns of collection may change, meaning both residual and garden waste will be collected on the same day every other week, instead of alternate weeks. Recycling and food waste will still be collected every week.

Changes mean that crews will stay in their designated town or locality for five days a week and only serve that area so they can really familiarise themselves with the local roads in their patch, the community, and manage the round well.

This will make it easier to respond to any issues and spread the vehicle traffic equally across the week, so will help to reduce congestion in any one area.

These new arrangements will improve the current service, use resources more efficiently and result in fewer missed collections.

Environmentally this will be much better as vehicle mileage will also reduce, so the carbon footprint of collections will be improved.

There will be no changes to the type of materials being collected or to the frequency of collections.

For more information visit [www.n-somerset.gov.uk/collectiondays](http://www.n-somerset.gov.uk/collectiondays)

## How will I be told?

To prepare people for these changes, information was sent out with the council tax bills in March and notices have been placed on bins by collection crews.

North Somerset Council will also write to all residents during May with their new calendar, explaining any changes to the collection day.



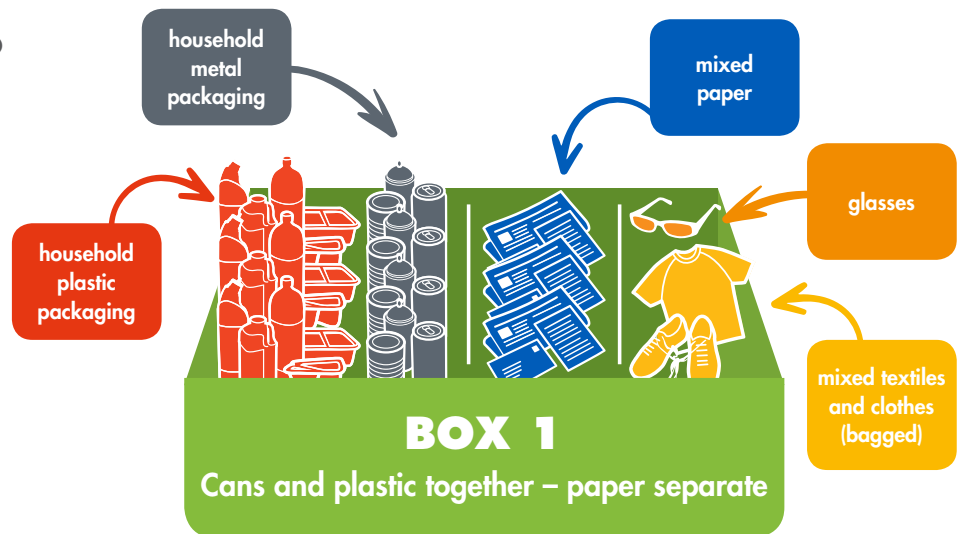
# Help make a difference

Sorting your recycling into the correct boxes means you can help speed up collections and reduce traffic congestion.

**The difference is 20 seconds to collect a sorted box, instead of two minutes for an unsorted one. Help us to help you.**

Please wash and squash all plastic and metal packaging, and flatten your cardboard boxes. This helps keep boxes clean and gives you more room for your recycling.

If you only have one box, please sort your recycling within it.



# Watch out for scammers and rogue traders



Spring is a popular time for tidying up the home and garden – but it's also prime season for scammers and rogue traders.

Rogue traders target vulnerable people with a variety of sales tactics so North Somerset's Trading Standards team are urging people to be on their guard against unannounced knocks on the door.

Tactics used on unsuspecting homeowners might include saying they are only in the neighbourhood for a short time, your neighbours are having work done too, or they've noticed something wrong with your house that needs urgent repair.

These tactics are often used to coerce homeowners into paying large sums but the work is poor quality or non-existent, there is little or no paperwork and the homeowner is left out of pocket.

## To protect yourself against the rogue trader...

- avoid paying cash – cheques or bank transfers leave a trail.
- always get a detailed written quote
- don't be rushed into agreeing to work
- always check references of the trader's previous work
- always obtain at least three quotes for work, but cheaper isn't always better.

## Thousands informed during scam awareness campaign

More than 2,000 people across North Somerset have received scam awareness information to help them be on their guard.

The campaign was run in partnership between the council's Trading Standards team and Somerset Age UK to advise and protect the many people who had jointly lost more than £500,000.



More than 170 people also received one-to-one support.

Helen Heskins, principal Trading Standards officer, said: "Not only does the economic loss create an enormous strain on the scam victim and their family, often with no opportunity to recoup the money, but it seriously impacts on the emotional wellbeing of the individual."

During home visits, Age UK support worker Lin Griffin also provided additional information and advice about services available for older people.

Lin said: "By encouraging people to do more activities outside the home, it means responding to mail and telephone scams is no longer part of their daily lives."

One resident said: "I will always have Lin sitting on my shoulder if I'm tempted to respond to unsolicited mail."

Citizens Advice: **03454 04 05 06**

If you feel intimidated or pressured on your doorstep, call the police on **101** (or **999** if the threat is immediate)



# Culture in Clevedon

Theatre Shop reopens

Live music, comedy and old-fashioned storytelling can be enjoyed at the Theatre Shop, in Queen's Square, this spring.

**Upcoming shows include...**

Tuesday 8 and Wednesday 9 May, 7.30pm

**One Man and His Cow by Living Spit**  
Farmyard frolics in rhyme and song. £11, age 8+

Tuesday 15 and Wednesday 16 May, 7.30pm

**Offside by Futures Theatre**  
Four women from across the centuries live, breathe, and play football. £11, age 14+

Thursday 17 May, 7.30pm  
**Ian Sherwood**

Award-winning Canadian musician/songwriter. £11, all ages.

Friday 18 May, 7.30pm

**Stolen - The Devil's Violin.** Storytelling with live string accompaniment. £11, age 10+

Saturday 26 May, 2pm

**Noisy Holiday by Kid Carpet And The Noisy Animals.** £8, for ages 3-8

Friday 8 June, 7.30pm

**Great Expectations by Rabbit Theatre**

A one-man adaptation of Charles Dickens's epic story. £11, age 10+

Sunday 10 June, noon and 2.45pm

**Glorious Greeks! by Wild Words**

An awesome adventure inspired by The Odyssey. £8, age 5+

Tuesday 12 and Wednesday 13 June, 7.30pm

**Tortoise vs Hare by Living Spit**

A race to end all races told in rhyme and song. £11, age 10+

Saturday 30 June, 2pm and 3.30pm

**Lego workshop with storyteller Michael Loader**

£5 per child, accompanying carer free of charge.

Book online at [www.theatreshop.org.uk](http://www.theatreshop.org.uk) or call 03336 663 366 (£1.50 booking fee applies)

Clevedon's cinema will become a music venue once again this month.

The Curzon Music Festival, in association with Songs from the Shed, returns to the Clevedon cinema on Friday 18 and Saturday 19 May.

The weekend includes a variety of bands performing eclectic live shows.

On the Friday is North Somerset six-piece band The Model Folk, all acoustic Thunderbridge Bluegrass Band, and riotous gypsy-folk band Ushti Baba.

Saturday performers include Roxanne de Bastion, Texan musician Rodney Branigan, Edgelarks, vocalist Gabby Young, Moscow Drug Club, and folk band Noble Jacks.

Tickets cost £30 for the whole weekend, £15 for Friday, or £20 for Saturday.

[www.curzon.org.uk](http://www.curzon.org.uk)



# Seven Streams

Enjoy far-reaching views across North Somerset and a meander along picturesque streams during this circular walk near Long Ashton.



## Walk information

**Distance:**  
about 3 miles

**Difficulty:**  
the route is across fields and stony tracks. Be prepared for mud and occasionally livestock. There are some stiles. Peel Park is suitable for buggies, as well as to the top of Warren Lane. Wellies recommended

**Duration:**  
about 2 hours

**Refreshments:**  
LA Café at Long Ashton Community Centre - open weekdays 10am-1.30pm, and 9.30am-4pm first Saturday of the month, serving hot drinks, homemade cakes and light lunches.

The Greedy Goose Carvery and Tea rooms at Gatcombe Farm, open seven days a week

Gatcombe Court – house and gardens open selected dates during the summer

This walk was devised by Tony Hibbitt, who sadly passed away last year. Tony was a keen walker and wrote many footpath walks, which can be downloaded from [www.longashtonparishcouncil.gov.uk](http://www.longashtonparishcouncil.gov.uk) (under 'local information' tab)

Begin at the community centre in Keedwell Hill. Take the path that leads across the children's play area to Keeds Lane. Turn right here and go up the lane before turning left into Peel Park.

The field was originally part of Long Ashton Research Station and named after Andrée Peel, an important member of the French Resistance during the Second World War.

Follow the winding path through the park until you reach the far side. Turn left into King Crofts, a modern housing development, and follow it down, then bearing left to reach Weston Road.

Turn right onto the main road before taking the next right, up Warren Lane.

Continue up to the top of the lane, past cottages on your right. Continue up the stony farm track until you reach two metal kissing gates on your left.

Go through here and cross the middle of the field. You will have wonderful views, as far as Brean Down in the distance. Exit this field through a wooden kissing gate in the middle of the hedge.

Head across the next field, veering towards the left. Take the well-trodden footpath next to the fence. Continue down and go through another wooden kissing gate.

## How to get there

**Start at map ref:** ST 537704

**By car:** Park at Long Ashton Community Centre, in Keedwell Hill, or considerately on the road.





CARE  
SPECIAL EDITION  
NORTH  
SOMERSET  
LIFE

# LIVE WELL FOR LONGER

**Promoting wellbeing and independence in older age is a priority for North Somerset Council.**

A wide range of support, services and equipment is available to help you live your life to the full, both now and in the future.

This 16-page special will help you make the right choices.



[www.n-somerset.gov.uk](http://www.n-somerset.gov.uk)

 @NorthSomersetC  NorthSomersetCouncil



# Promoting wellbeing and independence in later life



Helping older people stay independent for as long as possible is one of the key factors in ensuring their quality of life and happiness.

North Somerset Council wants to encourage older people to live safely at home, be independent and enjoy life in their local communities.

Planning ahead is an important part of this – thinking about what equipment you might need around the home, whether you could have hot meals delivered to your door, or whether new social activities could expand your horizons and help you meet new people.

This guide aims to help you plan ahead to find the right level of care and support.

It might be for you, for your parents, or close family, friends or neighbours.

The supplement has been designed as a pull-out guide so you can keep it to hand and refer to it when you need it.

A directory on the back page gives an at-a-glance round-up of key agencies and organisations to contact.



## Independence

Keeping older people physically, mentally, socially and emotionally engaged can help them stay healthier and independent for longer – and with independence comes dignity, self-esteem and fulfilment.

Being independent means being able to live your own life in your community, make your own choices and decisions, live in your own home if possible or with family, and not having to rely on others more than necessary for your physical and mental safety and wellbeing.

Everyone has different levels of independence at different points in their lives and the amount of support needed from family, community or services can go up and down.

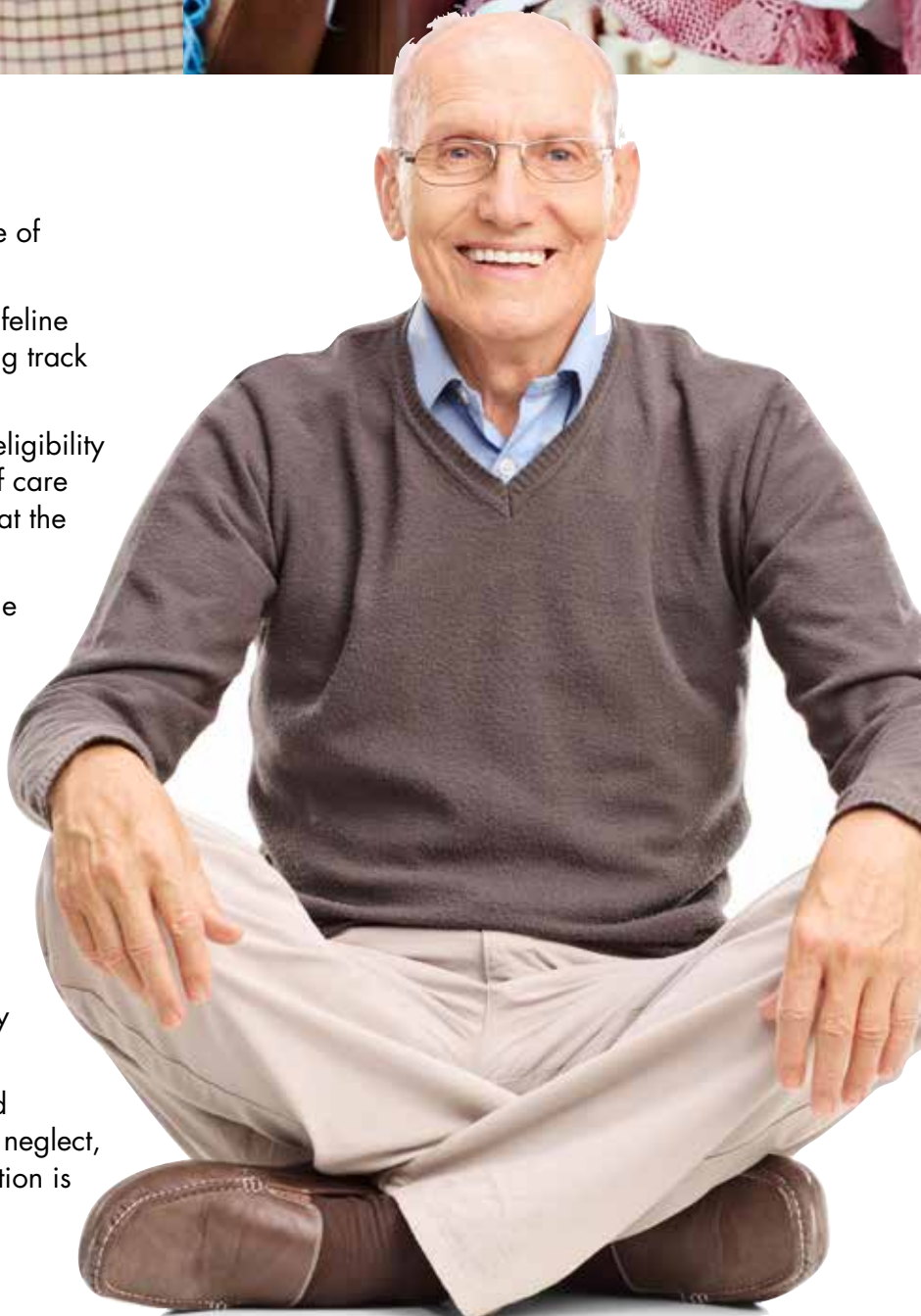
North Somerset Council works with partners, agencies, community and voluntary organisations to find the right advice, support and services at each stage.

However, providing quality social care is becoming ever more challenging during this time of reduced government funding and a rapidly growing and ageing population.

## Community is key

It's easier to stay independent if you have good community networks so the council always encourages people to maintain or renew their links with family members, friends, neighbours and community groups, such as clubs.





## Equipment

If you need support with personal care or maintaining safety at home, a wide range of equipment could be used.

This could be a simple walking aid or a lifeline pendant, or more costly items like a ceiling track hoist.

North Somerset Council carries out both eligibility and financial assessments if a package of care and support is needed, but it has to look at the most cost-effective ways of doing it.

Family and community support remains the priority.

North Somerset Council does recognise the enormous contribution of unpaid carers.

Individual assessments are offered to all carers to determine eligibility for a service, either in their own right or to support a relative or loved one.

The council also takes its legal responsibilities for safeguarding extremely seriously.

Whenever it thinks an adult with care and support needs may be at risk of abuse or neglect, enquiries are made to determine what action is needed to protect them.

# Who to contact...



Anyone who has started to think about the years ahead may be wondering where to turn for advice and support.

Picking up the phone and making that initial enquiry might seem daunting but a friendly voice will be on the other end of the line to point you in the right direction.

Here are some of the main contacts, with others listed on the back cover...

## Care Connect

Care Connect is the first point of contact for all adult and children's social services enquiries.

Operators receive about 250 calls a day, dealing with queries from residents, carers, family members, professionals, voluntary, statutory and independent agencies and organisations, asking for referrals, information or signposting.

Contact the team on **01934** or **01275 888 801** or email [care.connect@n-somerset.gov.uk](mailto:care.connect@n-somerset.gov.uk)

## Single Point of Access

A multi-disciplinary team of care managers, occupational therapists, nurses, physiotherapists, support workers and administrators work together to make up the Single Point of Access.

This team is the entry point for referrals to health and social care services in North Somerset, and it prioritises the referrals which come into the Care Connect contact centre.

Having a varied group of professionals within one team means knowledge and skills can be



shared and referrals are resolved in a timely way.

The team gives advice and guidance, prescribes equipment or minor adaptations, and signposts people who are not eligible for assessment to other services.

# Care Navigators

Adults who pay for their own social care can still get help accessing it thanks to the free Care Navigator service.

This team provides information and practical help about what care and support is available if you've had a care assessment through North Somerset Council but do not meet the eligibility criteria.

You are responsible for paying for your own social care if you have more than £23,250 in savings (or £46,500 in joint savings), do not wish to disclose your finances, or don't want an assessment of your care needs from North Somerset Council.

This is a short-term, client-led service which aims to address individual needs and help you maintain independence.

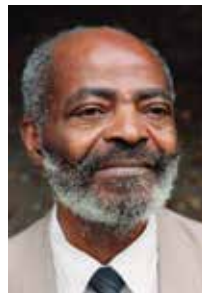
It supports people who live at home, in a care home or those being discharged from hospital.

Care Navigators aim to make contact within five working days of receiving the referral.

They can signpost you to relevant services such as meals on wheels, Carelink or Community Connect, as well as helping to arrange...

- care at home
- nursing home placements
- respite care
- live-in carers
- residential home placements
- day centres.

For more information  
call Care Connect: **01275 888 801**  
or email [care.connect@n-somerset.gov.uk](mailto:care.connect@n-somerset.gov.uk)



# Community Connect

Find information, advice and guidance about how to stay active in later life, be involved in your local area and keep living independently at home.

Community Connect is a free service provided in partnership with Curo and aimed at over-50s in North Somerset.

As well as information, advice and social events, it can support you to regain past interests or develop new ones.

Community Connect can also signpost to other helpful services, either by telephone or in person.

Call **01275 888 803** or email  
[communityconnect@curo-group.co.uk](mailto:communityconnect@curo-group.co.uk)

**We're hiring Carers!**

**brunelcare**

## Do you enjoy helping people?

We continue to expand our home care teams in Clevedon and Portishead along with our team in Waverley Court (Portishead). We're looking for caring individuals who share our passion for supporting people!

We provide our Community Carers with excellent working conditions and **guaranteed hours**. We also provide **free training** and pay for all your travel.

**To apply now, call 01275 879547, email [clevedonrecruit@brunelcare.org.uk](mailto:clevedonrecruit@brunelcare.org.uk)**

We are obliged to ask all successful applicants to complete a DBS disclosure form for which we pay. Brunelcare is an equal opportunities employer.

**disability confident** EMPLOYER

**INVESTORS IN PEOPLE** Accredited (until 2020)

Registered Charity 201555

# Future-proof your home

Making changes to your home will enable you to live in it for longer and maintain your independence.



According to Age UK Trading, a fifth of people aged 60 to 69 have made adaptations to prepare for older age.

These adaptations will help make your home an easier and more comfortable place to live, and help reduce falls and accidents.

Do your research before buying any new equipment to see what works for you and always shop around for the best price.

## Adaptions could include...

- moving all essential facilities (toilet/bathroom and even bedroom) to one floor
- installing level-access showers or wet rooms so you don't have to climb over the side of a bath
- removing fall hazards – avoid clutter and loose mats and rugs
- using easy-reach storage in kitchens
- installing hand rails if stairs are becoming difficult
- installing a stairlift

- upgrading your bed to an adjustable one
- ensuring your home is well lit – consider motion sensors
- making sure you can call for support if necessary.

[www.ageuk.org.uk](http://www.ageuk.org.uk)

## Help at the touch of a button

Carelink is the easy-to-use monitoring alarm system which can call for help at any time of the day or night.

The 24-hour alarm is linked to the home telephone line so once the button on the pendant is activated, it calls through to the emergency contact centre.

The alarm works up to 50 metres away from the main unit, so can be used around the home or garden.

Installation is free to all North Somerset residents and the system works with some Telecare products.

**Carelink: 01275 888 801**

## Join the digital revolution

Technological innovations in this digital age are developing faster than ever – and it could be a real lifeline for more vulnerable people.

North Somerset Council is looking at ways that digital or internet-enabled technology can reduce or delay the need for care services and its use is central to the council's vision for adult social care.

## Assistive technology could include...

- voice-activated speakers so someone can listen to their favourite radio show or audio book
- visual or audio reminders and prompts for routine tasks
- video calls to reduce social isolation
- safety alerts to reassure carers their loved ones are safe
- GPS and activity tracking
- raising alerts in an emergency.

WE Care & Repair are award-winning home improvement experts. We design and build bathrooms that help you live independently for longer.

- » **Professionalism:** dedicated architect-led design team to manage the work throughout
- » **Expertise:** optional personal assessment by an Occupational Therapist to plan your needs.
- » **Choice:** stylish range of fixtures and fittings in our showroom.
- » **Experience:** we've been improving homes for over 30 years.

0300 303 3704 or call our showroom on 01275 888 804

[www.wecr.org.uk](http://www.wecr.org.uk)  
[info@wecr.org.uk](mailto:info@wecr.org.uk)

## Stylish specialist bathrooms to keep you safe and well in your home

"I dreaded climbing over the bath it was a nightmare. Now I can just sit under the shower and let the water run over me - it's lovely  
*Mrs D*



WE Care & Repair is an award winning, not for profit organisation and appointed Home Improvement Agency for:



Bath & North East Somerset Council



North Somerset Council's assistive technology can be supported by an emergency response service so you have what you need to stay safe and independent in your own home.

The council is currently speaking to different people in the community to gather ideas and will publish its assistive technology strategy later this year.



## Try before you buy

Try assistive equipment first-hand to find the perfect fit for you by visiting a demonstration centre in Weston-super-Mare.

The Equipment and Demonstration Centre, in the Motex building in Winterstoke Road, has a wide range of equipment, adaptations and assistive technology on site so you can try before they buy.

Staff are on-hand to offer advice and talk you through the equipment and options available, as well as information about mobility aid shops.

Equipment can be bought directly from the centre, with home delivery available for larger products.

### Equipment on display includes:

- bathing aids
- toilet aids
- a working Geberit shower toilet
- a working Telecare alarm device
- an adjustable kitchen hob
- hoists
- bed aids
- stairlifts
- daily living aids, and more.

There is no need to book.

Equipment and Demonstration Centre: 01275 888 804

Open 10am-4pm Monday to Friday, 10am-2pm Saturdays

# More help at home

A range of support is available to help people live safely and securely.



## Extra care housing

Privacy and independence in a safe environment is available for people aged 55 and over who need more care and support.

Extra care housing schemes are individual flats with communal facilities and a professional care team on-site 24-hours-a-day.

These flats are available to rent through North Somerset Council and are allocated through a nomination process.

Some of these schemes also have flats available for lease or shared ownership from the housing association.

In North Somerset there are five extra care housing schemes available through the council –

Diamond Court, Lakeside Court and Tamar Court in Weston-super-Mare, Waverley Court in Portishead, and Sandford Station in Sandford.

To be eligible for these, you must...

- be 55 or over
- be eligible to receive care from North Somerset Council
- have a current application for housing through North Somerset Council's Home Choice scheme
- be eligible for council funding
- be a resident in North Somerset.

People with exceptional circumstances may be considered on a case-by-case basis.

As a tenant, you will pay rent and service charges directly to the landlord. Tenants are also

responsible for utility bills, council tax, insurance, telephones and meal costs, if these are not part of the tenancy.

If you have savings under the income threshold, you will be offered a full financial assessment from North Somerset Council.

This will determine whether any additional welfare benefits can be claimed and the maximum weekly contribution you will be asked to make towards the cost of the care.

To apply, contact Care Connect to be assessed for meeting the council's eligibility criteria. A Home Choice application will then need to be completed.

Care Connect: 01275 888 801 • [www.n-somerset.gov.uk/extracarehousing](http://www.n-somerset.gov.uk/extracarehousing)

Home Choice: 01934 426 330 [www.homechoicensomerset.org.uk](http://www.homechoicensomerset.org.uk)



# Hot meals delivered to your door

Hot meals can be delivered directly to your door every day if you have difficulty cooking or preparing meals.

The community meals service is a lifeline for people who are too frail or ill to cook for themselves.

The delivery driver also performs a valuable welfare check and will perform other services if needed, such as medication prompts, serving and cutting up the food and encouraging you to eat.

Hot lunchtime meals are available seven days a week for £5 a meal. A teatime sandwich and cold pudding is also available for an extra £3.30 per meal.

Special dietary needs can be catered for, such as diabetic or gluten free.



Community meals: 01275 882 155  
[community.meals@n-somerset.gov.uk](mailto:community.meals@n-somerset.gov.uk)  
[www.n-somerset.gov.uk/communitymeals](http://www.n-somerset.gov.uk/communitymeals)



## Sycamore Lodge Nursing Home

Lodge Lane, Nailsea,  
North Somerset  
BS48 1LX

Home Manager:  
Caroline Carter

Call:  
01275 858 000

Email:  
[SycamoreLodge.Manager@Shaw.co.uk](mailto:SycamoreLodge.Manager@Shaw.co.uk)



Inspected and rated  
**Good**  
Care Quality Commission

Respite & Long Term Care Options

We offer a complete pathway of dementia care, and now also have a new 18 bedded general nursing service on site. All with a dedicated caring staff team, creating a homely atmosphere for everyone.

- Nursing Dementia Care • General Nursing Care
- Day Care • Residential Dementia Care

# Working in partnership

A variety of organisations work together to ensure adults stay safe and well in North Somerset.

North Somerset Council works with a range of voluntary organisations to offer advice, support or resources to help you stay in your own home for longer, and keep healthy and active.

One such organisation is the Alzheimer's Society, which works with people who have all kinds of dementia in North Somerset.

The charity gives information and support, and signposts or refers people to other services which may be able to offer help or support.

It runs a variety of activity groups across the area, such as Singing for the Brain, physically active groups for younger people living with dementia, and the Living Well with Dementia group for people to have their say on what matters to them.

Vision North Somerset is another charity which works with North Somerset Council to support people with a visual impairment.

It provides advice, information and practical help to those who have been diagnosed and registered with sight impairment, by telephone or a home visit.

It also provides a rehabilitation service to support people to live independently at home.

The Alzheimer's Society:

**0300 1234 589**

[www.alzheimers.org.uk](http://www.alzheimers.org.uk)

Vision North Somerset:

**01934 419 393**

[visionnorthsomerset.wordpress.com](http://visionnorthsomerset.wordpress.com)

[info@visionns.org.uk](mailto:info@visionns.org.uk)

## Listening to the issues of older people

Older people in North Somerset are getting their voices heard about issues which affect them.

The Older People Champions Group was set up by North Somerset Council 10 years ago as a way for older people to give their views on things being planned.

The group, including representatives from organisations and individuals, meets quarterly with councillors to



raise any concerns about things happening in the area.

The council uses the group as an opportunity to discuss changes to policies and services for older people.

In recent years, items discussed have included public toilets, housing, public transport, home to hospital transport, social care, libraries, scams and more.

Once a year the Leader of the Council comes to the group to discuss the council budget for the next year.

The Avon and Somerset Police and Crime Commissioner also speaks annually.

To find out more about the group contact Alun Davies:

[alun.davies@n-somerset.gov.uk](mailto:alun.davies@n-somerset.gov.uk)

**01275 884 033**



# Retire and relax

In the heart of North Somerset is **Sandford Station**, a lively retirement village with a great community spirit. The excellent facilities and staff provide the perfect retirement lifestyle.

To find out more or book a place on an open day call **0117 919 4262**.

[www.stmonicastrust.org.uk/villages/sandford-station](http://www.stmonicastrust.org.uk/villages/sandford-station)

Registered Charity 202151

## Safeguarding adults

All adults should be able to live in safety, free from abuse and neglect and have their rights and choices respected.

Adult safeguarding means stopping, preventing or reducing the risk of abuse or neglect wherever possible.

North Somerset Safeguarding Adults Board is a statutory body responsible for developing strategies to reduce risk and prevent harm, and responding effectively when abuse and neglect occurs.

It supports and protects adults who have care and support needs, who are experiencing, or are at risk of, abuse or neglect and are unable to protect themselves.

Abuse can take many forms. It could be physical, psychological or emotional, sexual, financial or material, domestic, neglectful, discriminatory, or organisational.

A wide range of people could carry out the abuse – relatives, partners, children, the people paid to provide care and services, volunteers, neighbours, friends or strangers.

It can take place anywhere - at home, in a care or nursing home, day centres, or any place that the adult should be safe.



To report abuse and neglect call Care Connect: **01275 888 801**, Monday to Friday 8am-6pm (during out-of-hours and weekends call **01454 615 165**)

If the adult is in immediate danger and/or needs medical attention call **999**.

If a crime has taken place but it's not an emergency call **101**.

[www.northsomersetsafeguarding.co.uk](http://www.northsomersetsafeguarding.co.uk)

# Caring for the carers



## Do you provide unpaid care to loved ones?

People who provide unpaid care to a family member, friend or neighbour are urged to make sure they get enough support themselves.

Many people find that providing care for someone else impacts on their own lives in one way or another.

It can be very common to experience stress, social isolation, be financially disadvantaged or see your own health deteriorate as a result of your caring role.

In North Somerset, the Carers Support Alliance (CSA) supports carers to take good care of themselves.

It is funded by North Somerset Council and the Clinical Commissioning Group, and offers information and advice, practical support to identify problems, and find solutions.

Carers Support Alliance:  
03000 120 120  
[www.alliancehomesgroup.org.uk](http://www.alliancehomesgroup.org.uk)



# Rewarding careers in care

Could you start a new career supporting people of all ages with learning disabilities, physical disabilities, dementia or mental health problems?



North Somerset Council is a partner of Proud to Care South West, a partnership of 16 local authorities and Health Education England working together to raise the profile of a career in care and health.

Working in the care sector is about supporting people to maintain their independence at home, or live-in residential or nursing care homes, and be part of their community.

Roles can include personal care, helping with jobs around the home, getting people involved in social activities, helping people access services in their community or liaising with the family of someone living in a care home.

Care, compassion, competence, communication, courage and commitment are the main skills needed, rather than previous experience.

Employers provide training and support to gain recognised qualifications.

Work experience opportunities in health and social care roles are also available for students to earn money and gain first-hand knowledge.

To find jobs with local care providers visit [www.n-somerset.gov.uk/proudtocare](http://www.n-somerset.gov.uk/proudtocare)

# How occupational therapy could help you

Occupational therapy helps people of all ages restore their independence by taking a 'whole-person' approach to both mental and physical health and wellbeing.

You might need an occupational therapist if you are physically disabled, recovering from an illness or operation, have learning disabilities or mental health problems, or are getting older.

Occupational therapists provide practical support and work with you to see what day-to-day activities you find difficult and whether there is another way of doing it.

The support they give increases your independence and satisfaction in all aspects of their life.

The term 'occupation' refers to the practical and purposeful activities which allow someone to live independently and have a sense of identity.

One local resident said: "I wanted my wife to come home but I wasn't sure how I was going to manage.

"Her occupational therapist suggested using a telecare system which gives me peace of mind and means I can still go out and leave her at home."

Occupational therapists work with both adults and children in a variety of settings, including health organisations, social care services, housing, education, voluntary organisations or as independent practitioners.



If you feel you could benefit from an occupational therapist, call Care Connect on **01275 888 801** for support and advice.  
Royal College of Occupational Therapists: [www.rcot.co.uk](http://www.rcot.co.uk)



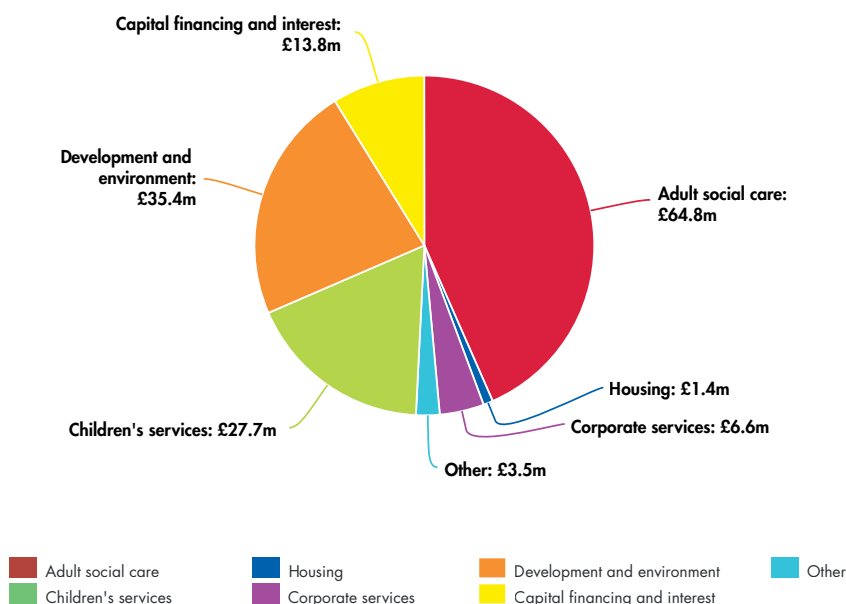
# The cost of care

## – where the money goes

Reductions in central government grants and the growing cost and demand of adult social care means there is a huge funding gap.

Finding a solution to this and funding adult social care in the future is one of the biggest challenges facing the government and councils.

### Council spending



During 2016/17, local authorities in England spent about £17.5bn on adult social care but, despite this, there was a funding gap of about £1bn.

Locally, North Somerset Council will spend about £95m on adult social care during the current financial year.

After different income streams have been accounted for, the council has to find £65m of this.

This money comes from central government, business rates and council tax and makes up 42 per cent of the council's overall spend of £153m.



### What is the money

A large proportion (£72m) of the £95m is spent on the direct costs of providing individual care and support to vulnerable adults.

This might be in a residential or nursing home, or to help them live independently in the community, such as home care.

The rest of the money is spent on social workers, support to carers, equipment and technology, information, advice, early intervention and support services.

Due to funding pressures, North Somerset Council has had to make significant budget savings over the past few years.



## spent on?

Nursing and residential care prices remain very low compared with neighbouring areas and the home care contracts recently underwent a competitive tendering process.

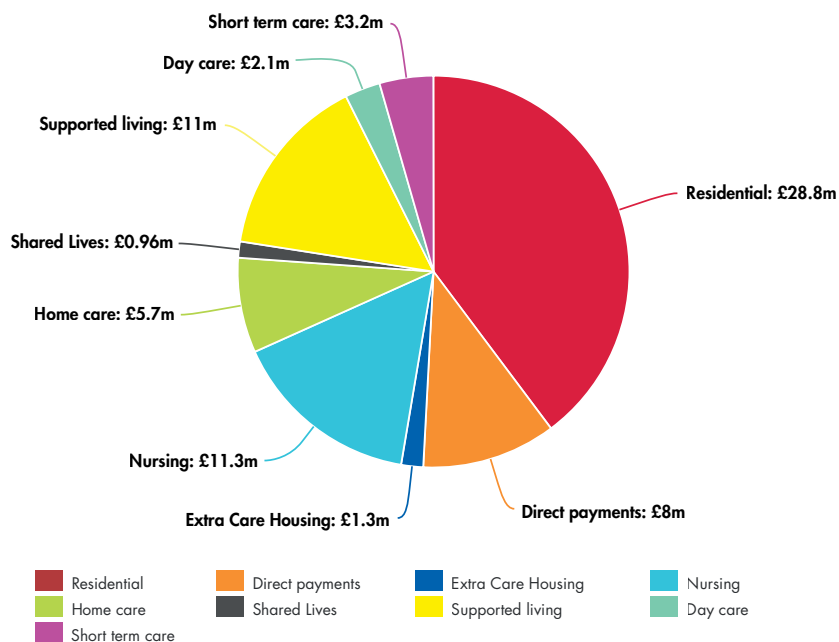
This leaves no alternative other than reducing spending on prevention and early intervention services.

Therefore, the council needs to spend more within its means, both now and in the future.

It will continue to manage its resources well on behalf of the community.

It always has in mind that if someone receives a service they don't need, it may not be there for someone who does.

## The direct costs of care in 2018/19



# Live well for longer directory

Care Connect is the first point of contact for all information, advice and guidance on social care in North Somerset.

Care Connect: **01275** or **01934 888 801**  
[care.connect@n-somerset.gov.uk](mailto:care.connect@n-somerset.gov.uk)

Care Navigators (call Care Connect)

Community Connect: **01275 888 803**  
[communityconnect@curo-group.co.uk](mailto:communityconnect@curo-group.co.uk)

North Somerset online directory:  
[www.n-somerset.gov.uk/onlinedirectory](http://www.n-somerset.gov.uk/onlinedirectory)

## Charities working with older people

Alzheimer's Society: **0300 1234 589**  
[north.somerset@alzheimers.org.uk](mailto:north.somerset@alzheimers.org.uk)  
[www.alzheimers.org.uk](http://www.alzheimers.org.uk)

Vision North Somerset: **01934 419 393**  
[visionnorthsomerset.wordpress.com](http://visionnorthsomerset.wordpress.com)

Age UK: [www.ageuk.org.uk](http://www.ageuk.org.uk)

## Safeguarding and support

Carers Support Alliance: **03000 120 120**  
(choose option 3)  
[carersupport@alliancehomes.org.uk](mailto:carersupport@alliancehomes.org.uk)

To report abuse and neglect call  
Care Connect: **01275 888 801**  
(or **01454 615 165** out of office hours)  
[www.northsomersetsafeguarding.co.uk](http://www.northsomersetsafeguarding.co.uk)

## Help in the home

Equipment and Demonstration Centre  
(Motex Centre): **01934 533 155**

Community meals: **01275 882 155**  
[community.meals@n-somerset.gov.uk](mailto:community.meals@n-somerset.gov.uk)

Home Choice: **01934 426 330**  
[www.homechoicenorthsomerset.org.uk](http://www.homechoicenorthsomerset.org.uk)

## Home Care

If you are eligible for home care arranged by North Somerset Council you will receive care from one of three preferred providers.

Alliance Living Care: **03000 121 447**  
[www.alliancehomesgroup.org.uk/care-and-support-services/our-care-services](http://www.alliancehomesgroup.org.uk/care-and-support-services/our-care-services)

Brunelcare: **01275 879 547**  
[www.brunelcare.org.uk](http://www.brunelcare.org.uk)

Notaro Homecare: **01934 422 800**  
[www.notarohomecare.co.uk](http://www.notarohomecare.co.uk)

Visit the North Somerset Online Directory to find a colour-coded map showing which provider covers your area.







Continue around the left edge of the next field and proceed ahead to Gatcombe Lane, through a final metal kissing gate.

Turn right up the lane. Go past the entrance to Gatcombe Mill and turn left down the track towards Gatcombe Mill House.

Carry straight on following the yellow waymarkers past the white house. Go over the wooden stile behind the house and bear right for a short way before turning left to go down towards the stream.

With the stream on your left, cross a second stile.

Continue on the path with the stream on your left and a woodland bank on your right.

You have reached 'Seven Streams'. This area can be wet and muddy if there has been heavy rain recently but is a very peaceful place to stop and rest your feet.

At the fork in the path, take the right-hand route (signposted a bridleway).

Ignore the kissing gate on your left and continue on the path, going up between the trees. At the top go through the gate (which is a bit stiff and needs lifting up) and turn right to follow the permissive path sign. Follow the path past the farm buildings until you reach Kingcott Farm.

Turn left to walk up the lane to Ashton Hill Plantation.

At the t-junction, turn right onto a track, then right again. This track is a permissive route through Ashton Hill Woodland, an ancient woodland dominated by ash, hazel and yew.

Continue along here until you reach a bend in the track and it opens up into a grassy area. Take the path straight ahead of you until you meet a path coming down. Turn right onto it and go through a kissing gate into a large field.

Veer to the left, down and across the field. Go through another kissing gate, and another, leading you onto a narrow path.

Walk along the narrow path behind a wire fence to Keeds Lane and turn right. Continue down the track until you reach the children's play area and community centre.



*This map is for guidance only and walkers should carry and use the OS 1:25000 map when out.*



© Crown copyright and database rights 2018 Ordnance Survey 100023397. You are not permitted to copy, sub-license, distribute or sell this data to third parties in any form.



## LOCAL EVENTS

### MAY

#### Thursday 3 – Monday 7

**Shaun Rogers Fun Fair**  
Millennium Park, Nailsea.  
Free entry.

#### Monday 7

**Nailsea Community May Fair**  
Millennium Park, Nailsea. Including car boot sale and live bands.

#### Classic car show

10.30am Grove Park, Weston-super-Mare. Sponsored by Grove Park Café. (also Monday 27 May, Saturday 23 and Sunday 24 June)

#### Sunday 13

**Somerset Garden Day**  
Spend quality time in your garden with neighbours, family and friends. www.gardenday.co.uk

**Step Out For Stroke** 2pm, Clarence Park, Weston-super-Mare. A fundraising walk for stroke survivors, their friends and families. Walk as far as you can. www.stroke.org.uk

#### Sunday 13 – Sunday 20

**Circus Vladimir** Salthouse Fields, Clevedon. Family-run traditional circus, for all ages.

#### Friday 18

**All Sixties Night** 8pm, Weston-super-Mare Football Club. In aid of Weston Hospicecare. £10 from 01934 522 511

### Saturday 19

**Courts and Cardinals** 7.30pm, All Saints Church, Weston-super-Mare. Choral music by Costanzi Consort, conducted by Peter Leech. £12 adult, £5 students, under 16s free when accompanied by an adult. 10 per cent discount if bought in advance: www.costanziconsort.org.uk

### Sunday 20

**Blagdon Village Fete**  
1pm, Blagdon Court, Station Road.

### JUNE

#### Sunday 3

**Des Henley's Singers and Strummers free band concert** 2.30pm, Grove Park, Weston-super-Mare. Sponsored by Grove Park Café. (also Weston Brass on Sunday 10 and RAFA Band Sunday 17 June)

#### Friday 15 and Saturday 16

**National Refuse Championships** Beach Lawns, Weston-super-Mare. Bin lorry racing (on Saturday) and trade stalls. www.refusevehiclesolutions.co.uk

#### Saturday 16

**6 Hands** 7.30pm, Churchill Academy. Internationally-acclaimed guitarists John Williams, John Etheridge and Gary Ryan. £18 for Champions of Churchill Music; £24

for non-Champions; £8 for under-18s. From www.ticketsource.co.uk/date/387044 or 01934 844 106

### Wednesday 20

**Race for Life** Weston Beach. A 5km walk, jog or run for Cancer Research UK. www.raceforlife.org

### Saturday 23

**Butcombe Village Fete** 2pm, gardens of the Old Rectory. 01761 462 812

### Saturday 30

**Worle Community Choir summer concert** 7pm, Priory Community School, Worle. £6 for adults, £3 for children. 01934 622 542 or 07972 909 939

## CLUBS AND SOCIETIES

### Mondays

**Weston Monday Art Group** (E) 10am, St Saviour's Church Hall, Locking Rd. 01934 514 127

**Winscombe District U3A Coffee Morning** (1, except Aug) 10am, Winscombe Community Centre. £1 inc refreshments.

**Tots1** (E, term time only) 10-11.30am, Bristol Road Baptist Church, Southside, Weston-super-Mare

**Iron Age hillfort of Weston-super-Mare restoration group** (E) (and Fridays) 10am-noon, access from Trinity Road. 01934 412 038

**Winscombe Probus Club** (2 and 4) 10.30am, Winscombe Community Centre. 01278 769 248

**Duplicate bridge** (E)(and Thurs, Fri, Sat) 1.30pm, 21 Montpelier, Weston. 01934 633 530

**Kewstoke Arts and Crafts Group** (E) 2pm, Village Hall. 01934 628 309

**Georgian Club for over 60s** (E) 2pm, St Georges Community Centre, Willow Close. 01934 510 953

**NHS Retirement Fellowship** (2) 2pm, Our Lady of Lourdes Church Hall, Worle. 01934 417 850

**Winscombe District U3A** (3, except Aug and Dec) 2pm, Winscombe Community Centre. £1.50 members, £2 non-members.

**Yatton Art Group** (E) 2.15pm, Village Hall. 01934 249 907

**Clevedon Mixed Leisure Club** (1 and 3) 2.30pm, Consti Club, Kenn Road. 01275 875 179

**Weston Flower Arrangement Society** (4) 2.30pm, St Georges Hall. 01934 812 177

**Whist drive-in**, Portishead (E) 7.15pm. 01275 844 290 or 843 851

**Clevedon Lions Club** (3) 7.15pm, Walton Hotel. 01275 878 983

**Weston Amateur Radio Society** (E) 7.30pm, Weston Social Club, Drove Rd. 01761 221206

**Weston Quilters** (1) 7.30pm, United Reform Church, Waterloo Street. 01934 834278

**Worle Lions** (2) 8pm, Windsor Castle pub. www.worlelions.co.uk, 08458 339 862

**Lions Club of Portishead** (2) 8pm, Clarence House, High Street. 08432 895 330

**Nailsea Lions Club** (2) 8pm, Grove Sports Centre. 01275 855 046

**Yatton WI** (2) 8pm, Yatton Village Hall. 01934 834 796

**Royal British Legion** (Portishead) (3) 8pm, Clarence House, High Street. 01934 251 468

### Tuesdays

**Weston U3A** (E) 10am, Friends Meeting House, High Street

**Mendip Art Group** (E) 10am, Banwell Village Hall. 01934 645 885

**North Somerset Botanical Painting Society** (E) 10am, Brackenwood Garden Centre, Abbots Leigh. 01934 832 952

**Age UK free advice sessions** (1) 10am-noon, Portishead Library, (2) 10am-noon, Nailsea Library, (4) 9.30am-12.30pm, Winscombe GP surgery. 0845 643 4621

**Coffee and Chat** (E, also Saturdays) 10am-noon, Portishead High Street Methodist Church, Portishead. 01275 844 917

**Friends of Trendlewood Park** (3)(and first Sun) 10am-1pm, Trendlewood Park, Nailsea. www.friendsoftrendlewoodpark.org.uk, 07879 607 492

**Western Active Stroke Group** (E) 10am-noon, Worlebury Golf Club, Monks Hill, Weston-super-Mare. (also last Tues of month, skittles at the Ebdon Arms, Lilac Way. Wick St Lawrence) 01934 519 266

**Clevedon Happy Companions Club** (E) 10.30am-2.30pm. Small, friendly social group for 4th age Clevedonians. 07887 744 295

**Coffee Stop drop-in coffee morning** (E) 10.30am, Milton Baptist Church, Baytree Rd. 01934 641 574

**Kewstoke's Tiny Teds Toddler Group** (E) 10.30am-noon, St Paul's Church Hall. £2 per family. 07980 384 034

**Clevedon Probus Club** 1974 (1)(3) 10.30am, Community Centre, Princes Rd. 01275 876 297

**Clevedon Probus2008 Club** (2)(4) 10.30am, Clevedon Community Centre, Princes Rd. 01275 874 631

**Multicultural Friendship Association** (E) 1-3pm, Weston Room, Badger Centre, Wadham Street, Weston. 07587 335 963, www.mfa-wsm.org.uk

**Lynne Castell Watercolours Art Group** (E) 1-4pm, in Our Lady of Lourdes Parish Room, Baytree Road, Weston-super-Mare. 01934 628 760 or www.lynnecastell.f2s.com

**Portishead Rotary Club Memory Café** (1)(3) 2.15pm, Jubilee Hall, Slade Rd. 01275 871 197

**Weston Scrabble Club** (E) 7pm, St Saviour's Church Hall, Locking Rd. 01934 620 948

**Weston-super-Mare and District Family History Society** (4, except Aug and Dec) 7pm, Vintage Church, Hughenden Road, Weston. 01934 418 998

**Catenian Association** (1) 7.15pm, Cadbury House Hotel, Congresbury. For Catholic men. 01275 877 180

**Rotary Club of Portishead** (E) 7.30pm, Clarence House, High Street. 01275 845 509

**A1 Camera Club** (E) 7.30pm, St Georges Community Centre, Willow Close. 01934 521 780

**Hutton Ladies Group** (1) 7.30pm, Village Hall. 01934 623 450

**Bleadon Photographic Club** (1, 2, 4) 7.30-9.30pm, Bleadon Coronation Hall. 01934 812 573

**Portishead Quilters** (1)(3) 7.30pm, Redcliffe Hall. 01275 848 467

**North Somerset Vintage Tractor Club** (1) Redhill Village Club. 01275 474 649

**Weston Railway Society** (1) Function Room, Conservative Club. 01934 628 289

**Clevedon Art Club** (2) 7.30pm, Sixth Form Centre, Clevedon School, Valley Road. 01275 879 556

**Women of Weston Women's Institute** (3) 7.30pm, Vintage Community Church, Hughenden Road, Weston. WeAreWOWWI@gmail.com

**Weston Archaeological and Natural History Society** (2) 7.30pm, Victoria Methodist Church Hall, Station Rd. 01934 620 785

**Portishead Townswomen's Guild** (4) 7.30pm, Folk Hall. 01275 847 271

**Clevedon and District Model Boat Club** (4) 7.30pm, The Salthouse (also sail on the 2nd Sunday of the month at 10am)



KEY: (E) Every • (A) Alternate • (1) First • (2) Second • (3) Third • (4) Fourth • (L) Last

**Nailsea and District Model Railway Club** (E) 7.30pm, Clevedon Craft Centre, off Moor Lane. [www.nailsea-district-mrc.co.uk](http://www.nailsea-district-mrc.co.uk)

**Clevedon and District Flower Club** (4) 7.30pm, Community Centre, Princes Rd. 01275 859 797

**Nailsea Miners Rotary Club** (E) 7.45pm, George pub, Backwell. 01275 854 641

**Weston and Mendip Advanced Motorists' Group** (3) 8pm, Village Hall, Crookes Lane, Kewstoke

**Yeo Valley Lions Club** (2) 8pm, Yatton Village Hall. 08458 339 602

**North Somerset Modellers' Society** (2) 8.30pm, Windsor Castle pub, Milton. 01934 417 907

### Wednesdays

**Lynne Castell Oils, Acrylics, Pastels Art Group** (E) 10am-1pm, in Greenways Farm, Lyefield Road, Worle, Weston-super-Mare. 01934 628 760 or [www.lynnecastell.f2s.com](http://www.lynnecastell.f2s.com)

**Age UK free advice sessions** (1)(2)(3) 10am-noon, Town Hall, Weston-super-Mare, (4) 10am-noon, Cadbury Garden Centre. 0845 643 4621

**Yeo Valley Probus Club** (1) (3) 10.30am, Backwell Bowls Club. 01275 857 769

**Backwell Probus Club** (2)(4) 10.30am, West Backwell Bowling Club. For retired men, to listen to talks on a wide variety of topics. 01275 462 627

**North Somerset Over 50s Club** (4) 11am, Clevedon Community Centre. 01275 842 282

**Gordano Probus Club** (2) 12.30pm, Clarence House, High Street, Portishead. 01275 398 706

**Portishead Probus Club 73** (3) noon-3pm, Clarence House Social Club, High Street. 01275 814 249 / 07715 572 106

**Failand Art Group** (E) 1.30pm, Village Hall, Oxhouse Lane. [Jimpeck1502@gmail.com](mailto:Jimpeck1502@gmail.com)

**Banwell Bridge Club** (E) 1.30pm, Village Hall. 01934 522 405

**Friends of Weston-super-Mare Museum** (3) 1.30pm, Blakehay Café, Wadhams Street, Weston. Meetings free to members. Small fee to visitors.

**Woodspring Scrabble Club** (E) 2pm, United Reformed Church, Weston. 01934 815 358

**Nailsea Scrabble Club** (E) 2pm, Mizzymeard Recreation Centre. 01275 464 864

**Worle Friendship Club** (E) 2pm, Worle Community Centre, Lawrence Rd. 01934 510 863

**Portbury Over Sixties Club** (1) 2pm, Portbury Village Hall

**Backwell Garden Club** (3) 2pm, WI Hall. 01275 464 236

**Portishead Senior Citizens Forum** (3) 2.15pm, Folk Hall. 01275 843 678

**Clevedon Senior Citizens' Forum** (L) 2.30pm, Masonic Hall, Albert Road. 01275 874 296

**Weston Amnesty International** (2) 6.30pm, Worlebury Golf Club, Weston. 01934 419 014

**Weston and Worle Bridge Club** (E) 7pm (and Fri 2pm), St Joseph's Church Hall, Camp Rd. 01934 510 027

**Weston Sea Cadets** (E) (and Fri), 7pm, Cadet HQ, Sunnyside Rd North. 11 to 18-year-olds.

**Portishead Spiritualist Association** (E) 7.30pm, Brampton Way Playgroup Hall, Brampton Way. 01275 843 744

**Weston Moose Social Evening** (L) 7pm, Ebdon Arms, Wick St Lawrence. Skittles, darts and friendly conversation. 01934 814 042 or [41litton@tiscali.co.uk](mailto:41litton@tiscali.co.uk)

**Wrington Vale Rotary Club** (E) 7.30pm, Burrington Inn, Burrington Combe. 01934 844 214 706

**Clevedon Yeo Rotary Club** (1 and 3) 7.30pm, Walton Park Hotel, Wellington Terrace, Clevedon. 01275 218 987 [www.clevedon-yeorotary.org.uk](http://www.clevedon-yeorotary.org.uk)

**Nailsea and District Horticultural Society** (2) 7.30pm, United Reformed Church Hall, Stockway North. £2 for members, £3 for visitors. 01275 855 342

**Nailsea Stamp and Postcard Club** (2) 7.30pm, Mizzymeard Recreation Centre. 01275 855 875

**Nailsea and Backwell Townswomen's Guild** (2) 7.30pm, Methodist Hall. 01275 810 579

**Worle WI** (3) 7.30pm, Castle Batch Community Centre, Bishop's Avenue. 01934 511 329

**Portishead Floral Art Society** (3) 7.30pm, Somerset Hall. £5 for visitors. 01275 374 201

**Royal British Legion (Clevedon)** (3) 7.30pm, Community Centre, Prince's Rd. 01275 879 816

**Gordano Valley 41 Club** (4) 7.30pm, Royal Inn, Portishead. 01275 817 258

**Moorhens WI** (1) 8pm, Locking Castle Church. [moorhensWI@gmail.com](mailto:moorhensWI@gmail.com)

### Thursdays

**Community Coffee Morning** (E) 10am, Clarence Park Baptist Church, Walliscote Rd. 01934 424 550

**Probus Club WSM** (1) (3) 10am, Worlebury Golf Club, Worlebury. 01934 514 857 [www.probusweston.com](http://www.probusweston.com)

**Probus Club of Nailsea** (2)(4) 10am, Mizzymeard Social Club. 01275 790 335

**Probus Milton** (2)(4) 10am, Milton Methodist Church. 01934 525 476

**Weston Twins and More** (4) 10am, Kids Hut, Winter Gardens. 01934 528 348

**Civil Service Retirement Fellowship** (1)(3) 10am, Friends Meeting House, High Street, Weston. 01275 858 766

**Copse Coffee drop-in coffee morning** (A) 10.30am, Copse Rd Chapel, Seavale Rd, Clevedon. 01275 798 667 / 07873 180 135

**Notable Club** (E) Uphill Scouts Hall. 07749 625 217

**Social duplicate bridge** (E) 2pm, Vintage Community Church Hall, Hughenden Road, Weston-super-Mare. 01934 627 751

**Winscombe Bridge Club** 2pm. 10-week course starting Thurs 29 Sept. £45. Call 01275 540 604 [www.winbridge.org.uk](http://www.winbridge.org.uk)



**Weston and District National Trust Association** (2)(and fourth Fri) 2.15pm, Corpus Christi Church Hall, Weston. 01934 633 593

**Yatton Knitting Club** (E) 5.45-6.45pm, Yatton Library. All abilities welcome. Free tea or coffee. 01934 426 100

**Vintage Hornby Railway Collectors** (4) 6pm, Scout Hut, Totterdown Rd Weston. 01934 413 053

**Loves Book Club** (1) 6.30pm, Loves Cafe, 9 West Street. 01934 645 672

**Vegetarian Cookery Club** (A) 6.45pm, Church Hall, 500 Locking Rd, Worle. 01934 628 860

**Uphill Brushstrokes** (2) 7pm, Uphill Village Hall. All abilities. 01934 820 105

**Weston Woodturning Circle** (3) 7pm, Weston Football Club, Winterstoke Rd. 01934 510 862

**Weston Chess Club** (E) 7.30pm, Weston-super-Mare Conservative Club, 24-26 Alexandra Parade. 01934 643 171

**Portishead Camera Club** (E, Sept-May) 7.30pm, Redcliffe Bay Hall, Newhaven Road. 01275 848 895 [www.portishead-cameraclub.co.uk](http://www.portishead-cameraclub.co.uk)

**Weston-super-Mare RSPB** (1, Sept-April) 7.30pm, St. Paul's Church Hall, Walliscote Rd. 01934 835 208

**Weston-super-Mare Horticultural Society** (2) 7.30pm, St Peter's Church Hall, Baytree Rd.

**Banwell WI** (2) 7.30pm, Village Hall, Banwell. Visitors welcome. 01934 253 761

**Hewish and District WI** (3) 7.30pm, Hewish and Puxton Village Hall, Maysgreen Lane. 01934 249 352

**Avon Wildlife Trust Long Ashton** (3) 7.30pm, Jubilee Pavilion, Keedwell Hill. 01275 392 690

**North Somerset Rural Business Forum** (3) 7.30pm, Mendip Spring Golf Club. £7.50 for non members. 01531 820 307

**Royal British Legion (Nailsea)** (3) 7.30pm, Grove Sports Club. 01275 856 879

**Bristol Sailors Meeting** (4) 8pm, British Legion Hall, Long Ashton.

### Fridays

**Good Companions Senior Citizens Club** (E) 9am, Somerset Hall, Portishead. 01275 848 059

**Gadget Club** (1) 10-11am, Town Hall library, Weston-super-Mare. 01934 426 010

**Lynne Castell Calligraphy Group** (A) 10am-1pm, in another Weston venue. 01934 628 760 or [www.lynnecastell.f2s.com](http://www.lynnecastell.f2s.com)

**Mead Vale Friendship Club (over 50s)** (E) 2pm, Community Hall, Worle. 01934 510 672

**Portishead Folk Hall Senior Citizens Club** (E) 2pm, Folk Hall, High Street, Portishead. £1, inc refreshments and entertainment. 01275 390 350

**50-plus club** (E) 2-4pm, Castle Batch Community Centre, Bishop Avenue, Worle.

**Scrabble Club** (E) 2.15-5pm, Clevedon Conservative Club. £1 per session. 01275 342 974

**Long Ashton Bowling Club** (E - May-Sept) 6pm, Community Centre, Keedwell Hill. 01275 853 885

**Nailsea Computer Club** (1)(3)(4) 7pm, Southfield Church, Southfield Close, Nailsea. 01275 852 521

**North Somerset Quilters** (3) 7.30pm, WI Hall, Station Rd, Backwell. 01275 463 119

**Portishead Stamp Club** (4) 7.30pm, Friends Meeting House, St Mary's Rd. 01275 374 738

**Banwell Society of Archaeology** (2) 7.30pm, Banwell Village Hall.

### Saturdays

**Hutton Lace and Craft Group** (2) 9.30am, Village Hall. 01934 822 871

**CREWS Backstage Support** (E) 10am-1pm, The Stables, Princes Rd, Clevedon. 07824 821 814

**Portbury Community Café** (1) 10am, Village Hall. 07971 501 374

**YABEEP Natural Beekeeping Group** (2) 10.30am, Claverham Village Hall, Bishops Rd. [YABeeP@gmail.com](mailto:YABeeP@gmail.com)

**Avon Guild of Spinners, Weavers and Dyers** (2) 10.30am, Bowls Pavilion, Long Ashton Community Centre. 01275 464 526

**Parkinson's UK North West Somerset branch meeting** (2) 10.30am-12.15pm, St Francis Church Hall, Nailsea. 01275 855 524

**Weston-super-Mare & District Family History** (E) 2pm-3.30pm, Weston library, Town Hall, Walliscote Grove Rd.

### Sundays

**Games and other activities group for over 50s** (3) 2-4pm, The Lawnside, Church Lane, Backwell. 01934 888 803

**Worle Lions Quiz** (1) Windsor Castle pub. Entry £2.50 inc food and cash prize. [www.worlelions.co.uk](http://www.worlelions.co.uk) 08458 339 862



Two main roads are set to be improved and a new bus interchange created in Weston-super-Mare's town centre thanks to nearly £5m of funding.

Station Road and Alexandra Parade will be upgraded to enhance the environment and journeys for pedestrians, cyclists and drivers.

The funding has come following a successful bid for almost £5m from the West of England Local Enterprise Partnership and Department for Transport.

Station Road will receive the initial money. Detailed design work will be revealed later this year and construction work will start in early 2019.

Landscape changes here will improve the journey to and from the train station and seafront, to make it more attractive for local people and visitors arriving in the town by train.

Design work for Alexandra Parade will take place this summer and construction will start at the end of 2019.



This will include alterations to the road layout and a new bus interchange created.

Cycling and pedestrian links will be enhanced and town centre bus transport will be consolidated to create a more accessible, open space which will increase the enjoyment of the area for everyone.

Rachel Lewis, regeneration manager at North Somerset Council, said: "We are delighted that improvement plans for Station Road and Alexandra Parade are going ahead.

"This is a complex site so it's important to consider the options carefully in partnership with the community, as we continue with this exciting project."

Station Road and Alexandra Parade are part of the Weston town centre regeneration programme, which includes improvements to key development sites and infrastructure projects to help to remove barriers and positively encourage investment within the town.

The vision for the town centre is focused on the themes of living, learning and lifestyle, to attract more people to live in the town centre and create a lively, university town which will further improve the local economy.

[www.n-somerset.gov.uk/westonvision](http://www.n-somerset.gov.uk/westonvision)

# Enhancing the town's heritage



The history and heritage of Weston-super-Mare is being protected and enhanced thanks to the Heritage Action Zone status the town has been granted by Historic England.

North Somerset Council, using the grant from Historic England, has recently appointed town planners Allies and Morrison Urban Practitioners to look at the conservation areas in Weston and put together management plans.

These plans will help guide both property owners and the council to make the right decisions when considering property development.

North Somerset Council is also keen to encourage residents who live in conservation areas in Weston to invest in the upkeep of their property and keep the area special.

Cara MacMahon, Heritage Action Zone project officer, said: "Using traditional designs and materials in

replacement windows and doors not only increases the value of your property but also adds to the historic character of the conservation area."

Shopfront design guidance and a shopfront enhancement grants scheme will be developed over the



To find out if you live in a conservation area, visit [www.n-somerset.gov.uk/environmentmap](http://www.n-somerset.gov.uk/environmentmap)

North Somerset Council can give pre-application advice about whether you need planning permission. Visit [www.n-somerset.gov.uk/planning](http://www.n-somerset.gov.uk/planning)

Works to buildings may also need separate approval under building regulations. North Somerset Council can advise on this. North Somerset Council also offers advice on replacing windows. Visit [www.n-somerset.gov.uk/planningprocedures](http://www.n-somerset.gov.uk/planningprocedures)

[www.planningportal.co.uk](http://www.planningportal.co.uk) • [www.historicengland.org.uk](http://www.historicengland.org.uk)

# Commitment to improving roads reaps results

Improving and maintaining roads across North Somerset remains a priority despite budget pressures – and results from a national survey show it is paying off.



The Department for Transport (DfT) carries out a road conditions survey of all local authority areas in England every year.

It looks at the condition of main A, B, C, and U (or unclassified) roads in each area.

Results show what percentage of the road network should be considered for maintenance – so the higher the percentage, the worse the overall condition of the road network.

In previous years, North Somerset's road network has been rated well in comparison to roads in other areas and this continues to be the case.

Latest findings from 2017 show that the area's roads are among the best in the country.

Just one per cent of A roads were found to be in a condition where maintenance should be considered.

This is a decrease on the previous year and puts North Somerset in the top 10 per cent of all local authorities in England.

For B and C roads, the figure was four per cent – well under the national average of six per cent and the South West average of eight per cent.

For U roads, the figure was just three per cent.

This was also a decrease of one per cent on the previous year and in the top quarter of all local authorities.

Only three other authorities – Bournemouth, Halton and Slough councils – had better rated U roads than North Somerset.

## Strategic approach is working

North Somerset Council has adopted a proactive 'whole-life' approach to road maintenance, in line with best practice encouraged by the DfT.

This means that preventative work is carried out wherever possible to extend the life of a road surface before potholes start to form and the road condition deteriorates to a point where a much more expensive repair is needed.

This can sometimes look as though 'good' roads are being repaired but in reality it is much more cost-effective to treat a road before problems worsen.

The council has also introduced 'smart gangs' to carry out high quality, urgent repairs to potholes

across North Somerset, working on a 'fix it once, fix it well' basis.

As well as these smart gangs, the council also uses spray injection patching to repair potholes.

This is a rapid patching treatment which enables high numbers of potholes to be repaired quickly, so minimising disruption to road users

On average about 95 per cent of potholes are fixed within 28 days of being reported.

Not all defects or holes meet national guidelines for repair, though.

Where this is the case, they will be monitored by officers so a repair can be carried out at an appropriate time.



# How North Somerset's roads compare nationally

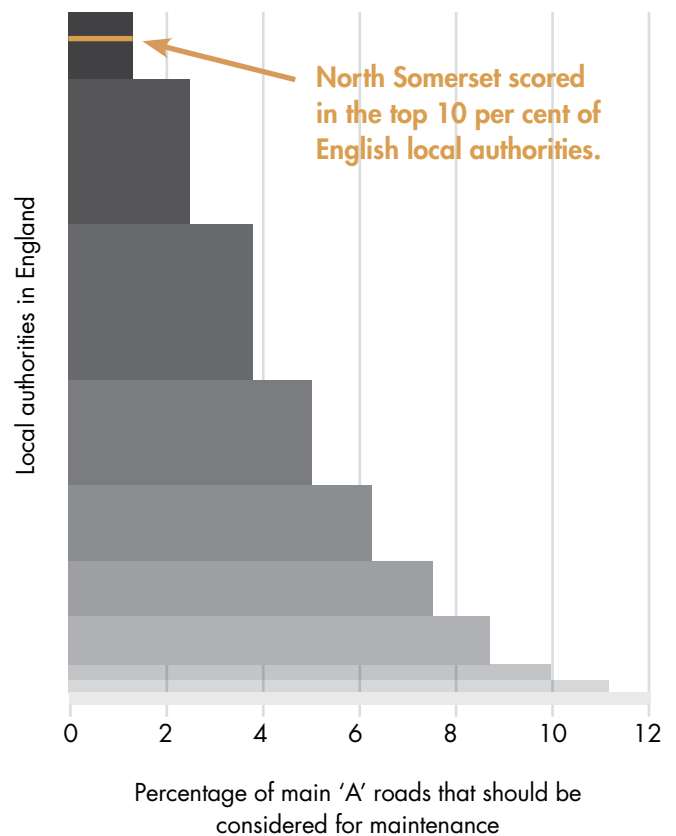
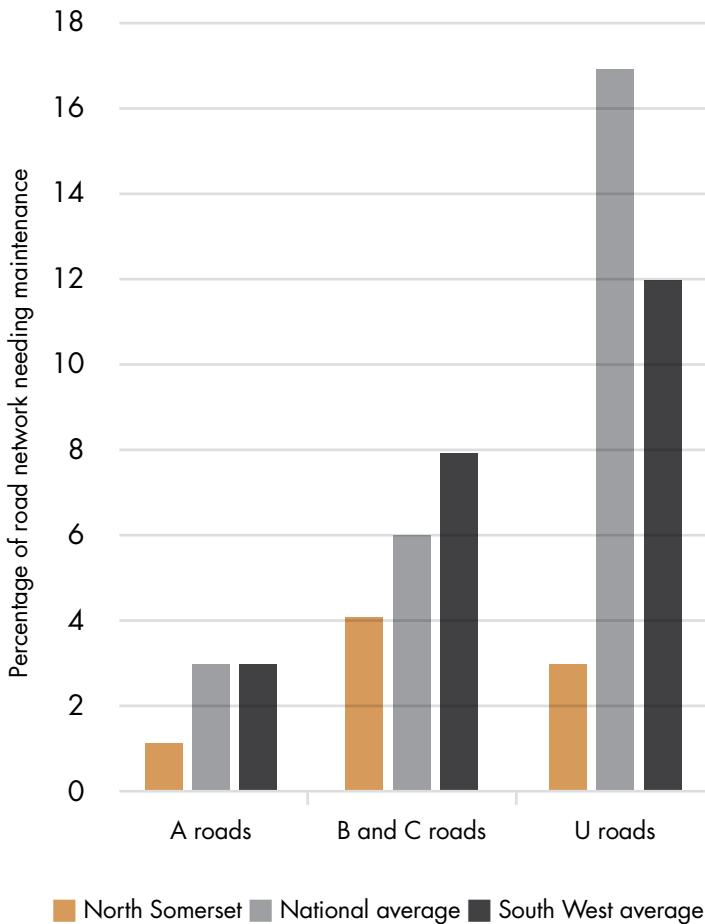
Report potholes and other road issues at [www.n-somerset.gov.uk/connect](http://www.n-somerset.gov.uk/connect)

For the latest updates on roads and travel in North Somerset follow:

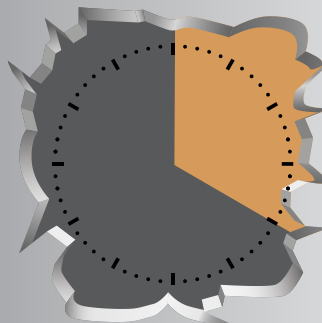
 @NStravel\_roads

 /NStravelandroads

How North Somerset compares with other local authorities in England.



About **500** potholes were repaired in March this year



That's about **1** every **20** minutes

Assuming 253 working days per year and an 8 hour day

**Potholes repaired** March 2018 



# National infrastructure company expands into North Somerset

A national company which provides infrastructure maintenance has moved into North Somerset after winning a Highways England contract.

DBi Services, together with its operating company ATM, has opened a new base at Junction 21 Enterprise Area in Weston-super-Mare after securing a place on Highways England South West (areas 1 and 2) construction works framework.

The company delivers vegetation and estate management, and maintenance services, such as road markings, landscape construction, fencing, site clearance and more.

**Life spoke to commercial director  
Derek Hardy to find out more...**

### ***In a nutshell, what do you do?***

DBi Services has delivered road markings, road studs and high-friction surface treatments for a range of clients for more than 35 years. In July 2016 we bought leading infrastructure soft estate maintenance company ATM to become one of the UK's leading highway maintenance companies.

### ***How did the company start?***

DBi Services was founded in 1978 by Pennsylvanian brothers Neal and Paul DeAngelo, starting as a small company working for a few friends and neighbours. Since then we have grown to become a global leader in infrastructure operations and maintenance.

Our success is based on securing longer-term contracts, by listening to clients, understanding their needs and developing a collaborative solution. This has enabled us to secure a high level of repeat business.

### ***Who are your customers and where are they located?***

ATM operates a number of contracts throughout the UK and has considerable experience in delivering scheduled and regular maintenance and special projects on highway verges and grassed amenity areas for Highways England, Yorkshire Water, the Environment Agency, local councils and commercial clients.





**What brought you to Weston-super-Mare?**

The new Highways England contract has enabled us to open an operating centre which is strategically positioned next to the highway network. From here all our operational and managerial support for the contract is being delivered.

This new facility also supports our wider business objectives of developing a regional presence, enabling us to tender for more contracts and create employment and training opportunities for local communities in the South West.

**Why did you choose Junction 21 Enterprise Area?**

This location gives us excellent access to the motorway. The area also has a diverse and enterprising economy and it enables us to access a highly-skilled and motivated talent pool. The location also supports our growth plans and will allow us to develop our client base across Bristol, Bath, the South West, south Wales and M5 corridor.

**When did your operating centre open?**

It opened last October and we spent the first couple of months recruiting the managerial team, installing IT systems, developing the office layout and building material and plant storage areas.

**How many jobs are being generated here?**

At the moment, we aim to employ 12 to 15 people in a variety of roles. These include a contract manager, contract supervisor, quantity surveyor and administrator. As we expand we will need additional team members at all levels.

We are committed to raising educational attainment in the workplace and have a number of apprentices. We fully endorse the principle of training employees for their current and future roles and it is our practice to help improve employees' performance and develop their potential with any appropriate training and education.

We are already working directly with North Somerset Council's employment and skills team, as well as several local training providers, to advise and support us in identifying suitable candidates to take up some of the roles we have to offer.

**What are your plans for the future?**

We will continue to grow and develop our business in the UK, and particularly the South West. The key to this is maintaining our innovative, proactive, positive approach and our operational and technical performance levels. We have a strong culture focused on delivering excellent customer service and one of our key challenges to maintain this is to keep reminding ourselves how important our customers are.



[www.dbiservices.co.uk](http://www.dbiservices.co.uk)  
 Full details of current vacancies visit  
[www.dbiservices.co.uk/careers](http://www.dbiservices.co.uk/careers)  
[www.j21.co.uk](http://www.j21.co.uk)



# Parents working together to make a difference



education needs and disabilities in North Somerset can now get more involved in making sure services are developed to meet the needs of their families.

This might mean pointing out when a service isn't working and how small changes can make a big difference.

Or it might be working on the design of new services to show how they can work better for children.

Anna Frary, chair of the forum, has two children who have recently been diagnosed with additional needs.

She said: "We are passionate about parents and want to empower them to be able to have a voice.

A forum - North Somerset Parent Carers Working Together (NSPCWT) – has been set up to help parent carers be better informed, have their say about local services, and give a collective voice.

It works as a strategic partner to North Somerset Council to make sure the services it delivers work effectively.

Sheila Smith, director of people and communities at North Somerset Council, said: "While the council is struggling to balance reducing finances with increasing needs, it is important to work with parents and carers to deliver the best possible services."



"I also know how important it is to work with local services. Only by working together can change happen."

Mark Hemmings, local children's health commissioner at NHS Bristol, North Somerset and South Gloucestershire Clinical Commissioning Group (CCG) said: "The CCG is really pleased to have developed a very positive relationship with NSPCWT and is looking forward to working together, in the short and longer term, to improve health services for children with additional needs across North Somerset."

The forum is also running coffee mornings across the area as well as visiting schools to talk to other parent carers.

NSPCWT: 07434 678 832 • [northsomersetpcwt@gmail.com](mailto:northsomersetpcwt@gmail.com) • [f nspcwt](https://www.facebook.com/nspcwt)

# Feel Good Festival launches

Mindfulness, massages and a medley of music will be coming to Weston-super-Mare this month during a new festival aimed at improving mental health.



The Feel Good Festival takes place in the Italian Gardens on Saturday 19 May to highlight what we can all do to help improve our wellbeing and reduce stress.

It is being hosted by umbrella group Warriors of Wellbeing (WoW), a collection of local organisations – including North Somerset Council, Avon and Wiltshire Mental Health Partnership and the charity 1 in 4 People – which aims to change how people think and act about mental health.

The group launched last year and its first event, in Clevedon, attracted more than 200 people and raised £250 for charity.

The Feel Good Festival takes place during Mental Health Awareness Week and this year's theme is stress.

The mix of wellbeing activities includes a samba dance class, Indian head massage, a mass mindfulness session and art workshop run by Create Together.

There will also be performances from artists including the North Somerset Rock Choir and the Hairy Viking.

During the day doctor Tiff Earle, a founding member of WoW, will have her head shaved live on stage to raise money for the charity Headlight. The festival starts at 11 am.



 WarriorsOfWellbeing • [www.mentalhealth.org.uk](http://www.mentalhealth.org.uk)  
[www.createtogether1.com](http://www.createtogether1.com) • [www.headlightcharity.org.uk](http://www.headlightcharity.org.uk)  
[www.thebatoutofhull.com](http://www.thebatoutofhull.com) (the Hairy Viking) • [www.justgiving.com/tiff-earle](http://www.justgiving.com/tiff-earle)

# Support for deaf people

People with hearing impairments can find out what help is available during an awareness week in North Somerset this month.

Deaf Awareness Week takes place from Monday 14 to Friday 18 May to showcase the varied work that people and organisations undertake to support deaf people.

**Three main events take place in Weston-super-Mare during the week:**

- **Tuesday 15** – 10am-2pm, Sovereign Centre. Meet hearing assistance dogs and their owners
- **Wednesday 16** – Town Hall. Meet the services – SENSE, Hearing Dogs for Deaf People, Citizens Advice North Somerset, Action on Hearing Loss, Audiology, Deaf Equipment Service, and Avon Fire and Rescue. Sign up for a safety visit or take an online hearing check
- **Thursday 17** – Town Hall. Communication Day with coffee, cakes and a deaf blind awareness session. Lip reading and British Sign Language taster sessions also available. To book, call or text 07917 265 576.



Leaflets are also available throughout the week from the Town Hall in Weston-super-Mare, Castlewood office in Clevedon and Weston Hospital.

Students at North Somerset schools will also enjoy signed story sessions, organised by Weston College with the help of deaf story tellers, interpreters and Hearing Dogs for Deaf People.

## Where to go for support

### Hard of hearing group

First Monday of the month, 2-4pm, Vision North Somerset, Neva Road, Weston-super-Mare. Mainly older people who have lost their hearing in later life.

### Communication café

Third Thursday of the month, 10am-noon, Coffee #1, High Street, Weston-super-Mare. For deaf and hearing people of all ages.

### Friday group

Fourth Friday of the month, noon-3pm, St Andrews church hall, Old Church Road, Clevedon. Mainly for BSL and bi-lingual users.

### Deaf church and social group

Second Sunday of the month, 3pm, Emmanuel Church, Oxford Street, Weston-super-Mare. Services held in BSL and English.

**Equipment officer for deaf people at Vision North Somerset: 01934 419 393, 01934 613 949 (textphone) [hearingloss@visionns.org.uk](mailto:hearingloss@visionns.org.uk)**

**Citizens Advice North Somerset text relay line: 03444 111 445**

**Action on Hearing Loss information line: 08088 080 123, 08088 089 000 (textphone), 07800 000 360 (SMS) [www.actiononhearingloss.org.uk](http://www.actiononhearingloss.org.uk)**

**British Sign Language classes and support for deaf students at Weston College. Call 01934 411 411 or text 07780 701 556**

**For more information call Liz Watkins, from North Somerset Council: 01275 882 826 or 07917 265 576 [www.n-somerset.gov.uk/daw2018](http://www.n-somerset.gov.uk/daw2018)**

# Get vocal, be heard

Residents who are on the receiving end of council services often have good ideas about how to make them better.

North Somerset Council strives to provide the best standards of customer care, listen to residents' views, and take them into account, where possible, when making future decisions.

## You said:

*I live in Weston Village and my garden has flooded during heavy rain. I'm really worried it will happen again.*

## We did:

The area around Summer Lane, in Weston-super-Mare, was hit by flooding twice in 2012 and again in 2016, when at one stage 4,000 litres of water were pumped every minute to protect local homes and businesses.

Following the 2012 flooding, council officers started investigating what could be done to reduce the risk.

They produced a hydraulic model to analyse the flooding and consider possible solutions before commissioning engineering consultants to produce a business case and outline design for the proposed scheme.

Government funding of £240,000 had already been identified for the project with North Somerset Council also providing £212,000.

Last month the government announced the area will also get £430,000 of additional funding, as part of a national £36m pot of money to improve flood protection.

Suggested improvements include raising the current embankments on the existing wet and dry ponds, building a new dry pond flood storage area, improving the ditch drainage and adding a new culvert crossing under Bransby Way.

It will provide properties with a protection level of a 'once in two hundred years' flood event.

Officers will work closely with local residents, business and community groups over the coming months.

An information session will also be held for people to find out more about the scheme before work starts later this year.



## Comment on council consultations

Have your say on North Somerset Council's policies by taking part in consultations. All consultations are listed at [www.n-somerset.gov.uk/consult](http://www.n-somerset.gov.uk/consult)

Sign up online to receive email alerts when new consultations are opened.

For people who can't get online, at the beginning of every month posters are put up in all North Somerset libraries and council connect points, such as the Castlewood office in Clevedon, to publicise the live consultations and how to take part.

# Your views

## Dear Editor

I've heard on the grapevine that the Government is extending the mandatory HMO (house in multiple occupation) scheme. How can I find out if this will affect me?

*A private landlord*

### Editor's response:

North Somerset Council's private rented housing team has confirmed the mandatory scheme will expand on 1 October this year.

The Licensing of Houses in Multiple Occupation (Prescribed Description) (England) Order 2018 comes into force on that date.

This means that all HMOs occupied by five or more people sharing facilities who are not part of the same family will need to be licensed throughout England.

The licensing scheme was previously restricted to properties of three or more storeys.

The government will shortly publish guidance and the council's website will be updated with full details. In the meantime visit [www.legislation.gov.uk/uksi/2018/221/made](http://www.legislation.gov.uk/uksi/2018/221/made)

## Dear Editor

After all the media coverage of plastic waste recently I decided to see how much I could reduce my non-recyclable waste by. We are a two-person household and only produce about one black bag a fortnight anyway.

After taking time to read packaging and cut up packages to separate materials, I achieved just one full 800g bread bag of non-recyclable waste!

The only things that I have stopped buying is clingfilm and bathroom wipes but we survived without those items for many years.

I hope I can keep this up, I would never have managed this when I had children at home.

*J Franklin*

Send your items to  
Editor, North Somerset Life  
North Somerset Council  
Floor 1, Town Hall  
Weston-super-Mare, BS23 1UJ  
or email [editor@n-somerset.gov.uk](mailto:editor@n-somerset.gov.uk)

@NorthSomersetC

NorthSomersetCouncil  
NorthSomersetLife

Items submitted without a valid name and address will not be considered for publication. Please tell us if you do not want your details published. Due to space restrictions letters may be edited.

North Somerset Life is on Instagram. Tag [#northsomersetlife](#) to share your photos



@R011ERBOY



@nick.horne



@dancookephotography



Many topics are covered on Twitter and Facebook and last month these issues were raised...

If you live in North Somerset, the council charge more tax on a property if no-one is living there than if only one person is living there. A single person gets a discount. An empty property up for sale is charged the full council tax rate. This is absurd.

**North Somerset Council:**  
There is a lot of pressure for

us to reduce expenditure and we also need to bring empty properties back into use as soon as possible, so our councillors decided to remove the discount for empty properties completely.

Just been watching a BBC One Show feature about plastic roads. Seems like an amazing way to deal with plastic waste

which would otherwise go in the sea or landfill and improve the roads that we all take for granted. Any plans to do this here?

**North Somerset Council:**  
Our highways team say trials for using recycled plastic in road construction are still in their infancy, and we will keep our eye on developments in this area.

28000 0418

North Somerset Life is the award winning magazine for the people of North Somerset. Your copy should be delivered with your post unless you use Royal Mail's opt out service to block unaddressed mail.

You can download this issue and back issues from [www.n-somerset.gov.uk/nsl](http://www.n-somerset.gov.uk/nsl) or pick copies up from council buildings.

Coming next issue:

- Summer special what's on guide

Sign up to *Life's* online edition and receive news straight into your inbox. Visit [www.northsomersetlife.co.uk](http://www.northsomersetlife.co.uk)

[www.n-somerset.gov.uk](http://www.n-somerset.gov.uk)

Report it. Request it. Pay for it.  
[www.n-somerset.gov.uk/connect](http://www.n-somerset.gov.uk/connect)

9am – 5pm Mon – Fri

**Council Connect:** for all streets and open spaces enquiries: 01934 888 802

**Care Connect:** for all social services enquiries: 01275 888 801  
[care.connect@n-somerset.gov.uk](mailto:care.connect@n-somerset.gov.uk)

**Main switchboard:** 01934 888 888

**Emergency (out of hours):** 01934 622 669

North Somerset Council  
Town Hall  
Weston-super-Mare BS23 1UJ

# Tide timetables for Weston-super-Mare

## Tide facts

Approximate high water times at:

- Clevedon: 10 min
- Portishead: 18 min
- later than Weston-super-Mare.

Weather conditions which differ from the average will have an effect on the differences between predicted and actual tide times.

Strong winds can hold the tide in or push the tide out. Air pressure can also cause fluctuations in predicted levels.

Tidal predictions for Weston-super-Mare have been computed by the Proudman Oceanographic Laboratory.

Copyright reserved.

[www.n-somerset.gov.uk/tidetimes](http://www.n-somerset.gov.uk/tidetimes)

### MAY 2018

Date	High water		Low water		High water		Low water	
	Time	Height (M)	Time	Height (M)	Time	Height (M)	Time	Height (M)
	AM				PM			
1 Tue	08:31	12.10	02:05	0.74	20:49	12.15	14:22	0.87
2 Wed	09:05	11.96	02:34	0.84	21:22	11.91	14:50	1.01
3 Thu	09:38	11.60	03:02	1.00	21:54	11.42	15:16	1.22
4 Fri	10:09	11.01	03:29	1.25	22:24	10.75	15:40	1.52
5 Sat	10:39	10.31	03:56	1.58	22:53	10.04	16:07	1.86
6 Sun	11:10	9.61	04:29	1.96	23:27	9.36	16:41	2.23
7 Mon	11:49	8.99	05:09	2.37	-	-	17:27	2.64
8 Tue	00:13	8.78	06:05	2.78	12:44	8.50	18:28	3.04
9 Wed	01:25	8.42	07:21	3.10	14:08	8.35	19:55	3.29
10 Thu	03:03	8.65	09:04	3.04	15:37	8.85	21:42	3.00
11 Fri	04:13	9.42	10:21	2.43	16:40	9.72	22:44	2.33
12 Sat	05:08	10.32	11:10	1.85	17:32	10.61	23:33	1.78
13 Sun	05:56	11.10	11:58	1.42	18:19	11.35	-	-
14 Mon	06:42	11.70	00:21	1.37	19:02	11.90	12:45	1.08
15 Tue	07:26	12.11	01:06	1.04	19:46	12.27	13:29	0.82
16 Wed	08:09	12.36	01:49	0.80	20:28	12.47	14:10	0.67
17 Thu	08:52	12.43	02:30	0.69	21:10	12.45	14:52	0.68
18 Fri	09:38	12.25	03:11	0.75	21:55	12.17	15:33	0.86
19 Sat	10:24	11.81	03:54	0.96	22:42	11.66	16:13	1.16
20 Sun	11:14	11.18	04:38	1.28	23:33	11.02	17:00	1.53
21 Mon	-	-	05:30	1.64	12:08	10.53	17:57	1.89
22 Tue	00:32	10.43	06:35	1.96	13:11	10.03	19:10	2.19
23 Wed	01:39	10.08	07:55	2.16	14:22	9.85	20:34	2.26
24 Thu	02:53	10.07	09:14	2.06	15:37	10.05	21:46	2.02
25 Fri	04:10	10.38	10:18	1.80	16:47	10.53	22:47	1.71
26 Sat	05:14	10.84	11:19	1.54	17:45	11.01	23:43	1.43
27 Sun	06:07	11.18	-	-	18:31	11.34	12:08	1.35
28 Mon	06:51	11.36	00:26	1.26	19:12	11.52	12:47	1.27
29 Tue	07:30	11.45	01:02	1.21	19:49	11.63	13:21	1.26
30 Wed	08:07	11.50	01:37	1.19	20:25	11.67	13:53	1.26
31 Thu	08:42	11.46	02:07	1.19	20:58	11.57	14:22	1.29

### JUNE 2018

Date	High water		Low water		High water		Low water	
	Time	Height (M)	Time	Height (M)	Time	Height (M)	Time	Height (M)
	AM				PM			
1 Fri	09:14	11.26	02:37	1.23	21:31	11.28	14:50	1.39
2 Sat	09:47	10.91	03:06	1.37	22:02	10.85	15:17	1.57
3 Sun	10:18	10.46	03:37	1.58	22:34	10.34	15:47	1.81
4 Mon	10:51	9.97	04:10	1.85	23:09	9.83	16:21	2.08
5 Tue	11:30	9.51	04:50	2.14	23:52	9.38	17:05	2.37
6 Wed	-	-	05:42	2.43	12:16	9.13	18:00	2.65
7 Thu	00:46	9.06	06:45	2.66	13:16	8.92	19:11	2.86
8 Fri	01:56	9.01	08:01	2.74	14:32	9.03	20:33	2.87
9 Sat	03:16	9.39	09:23	2.54	15:48	9.60	21:54	2.53
10 Sun	04:21	10.10	10:27	2.08	16:49	10.39	22:54	2.02
11 Mon	05:18	10.86	11:21	1.64	17:44	11.15	23:47	1.58
12 Tue	06:10	11.50	-	-	18:35	11.76	12:15	1.28
13 Wed	07:02	11.96	00:40	1.21	19:24	12.19	13:05	0.97
14 Thu	07:51	12.26	01:29	0.91	20:11	12.44	13:51	0.76
15 Fri	08:39	12.39	02:14	0.72	20:58	12.52	14:37	0.68
16 Sat	09:28	12.34	03:00	0.68	21:46	12.39	15:23	0.75
17 Sun	10:15	12.07	03:47	0.79	22:35	12.04	16:10	0.96
18 Mon	11:05	11.60	04:36	1.02	23:26	11.54	17:00	1.25
19 Tue	11:57	11.03	05:28	1.32	-	-	17:53	1.56
20 Wed	00:19	10.98	06:26	1.62	12:52	10.48	18:52	1.85
21 Thu	01:17	10.49	07:30	1.89	13:53	10.09	20:02	2.09
22 Fri	02:20	10.18	08:38	2.07	14:59	9.93	21:11	2.17
23 Sat	03:29	10.09	09:41	2.10	16:09	10.04	22:11	2.09
24 Sun	04:37	10.21	10:39	2.02	17:10	10.34	23:05	1.94
25 Mon	05:36	10.45	11:32	1.88	18:03	10.68	23:54	1.76
26 Tue	06:25	10.69	-	-	18:48	10.96	12:16	1.72
27 Wed	07:08	10.88	00:35	1.60	19:28	11.18	12:53	1.59
28 Thu	07:46	11.02	01:10	1.49	20:04	11.30	13:28	1.50
29 Fri	08:23	11.08	01:45	1.41	20:39	11.33	14:01	1.46
30 Sat	08:56	11.06	02:18	1.37	21:12	11.25	14:32	1.47



# Changes are coming this summer

To make your recycling and waste collections more efficient and reliable North Somerset Council is making some changes to the collection rounds. This will mean that from Monday 4 June your collection day may change.

The council will write to you in May to let you know what your new collection day will be from June onwards. Look out for the envelope which will include your new collection calendar.



working together



[www.n-somerset.gov.uk/collectiondays](http://www.n-somerset.gov.uk/collectiondays)