

# NORTH SOMERSET

ISSUE 142 – MARCH/APRIL 2019

# LIFE



Spring into  
**action**

# Community Befriending Scheme

Now covering Sandford, Winscombe, Banwell, Churchill and Langford



St Monica Trust

If you're 60 years or over, live alone and would enjoy a weekly visit from a friendly volunteer then the Community Befriending Scheme may just be what you're looking for!

Loneliness can affect us all at some point in our lives, young or old. But sadly the risks of feeling lonely and isolated increase as we get older. The Community Befriending Scheme is FREE and offers companionship and friendship in your own home. If you'd like more information for yourself or someone you know please contact me.



**Karen Bennett**  
**Community Befriending Officer**  
**0117 305 2365**  
**karen.bennett@stmonicastrust.org.uk**

### *Just one hour can change someone's life*

If you're 18 or over and want to make a real difference to someone's life - and your own - then talk to us about becoming a volunteer. It's fun, rewarding and a great opportunity to meet new people.

[www.stmonicastrust.org.uk](http://www.stmonicastrust.org.uk)



## Ashbrooke House School & Pre-School

An investment for life

Independent School for boys and girls from Nursery to Year 6



**"Where you make the choice for your child's future"**

### Open days

Thursday 7th March  
10am to 6pm

Saturday 23rd March  
10am to 12.30pm

Contact us to book a place

[www.AHSandPS.co.uk](http://www.AHSandPS.co.uk)  
 Enquiries@AHSandPS.co.uk  
 01934 629 515

Taster days available



# Leader's column

I mentioned last time that local government has had a difficult task since 2010 coping with the 10-year target of cuts imposed by central government. The label 'austerity' seemed to be mentioned daily.

The North Somerset budget we have just agreed for 2019/20 is the 10th year. It is tempting when coming to the end of a difficult time to relax too early and risk undoing the difficult decisions already made. Of course, there have been real difficulties – you cannot face £105m of cuts without consequences. When more than 60 per cent of your funding is spent on care services, cuts are bound to affect some of the most vulnerable. Protecting those services as much as possible means cutting everything else, which then affects most people who see costs rising and services reducing. Not a popular position but putting off unpopular decisions would have been far worse.

Local government is an important part of life but not something we hear about in the news until something goes wrong. There will always be road repairs and waste bins missed – irritating yet unavoidable. But North Somerset highways are in the top five authorities nationally for road conditions and while

our waste contractors had dreadful problems, they are now providing a really good service.

Besides protecting care services, proposals for the coming year also include more funding for a few specific issues – early years attainment for some of our youngest children, home to school transport, roadside clearance, more litter bins, some local parking/traffic schemes, no increase in parking charges, as well as reducing them where it helps local residents and businesses. Cannot do everything but it is a welcome start. North Somerset staff have done an excellent job over many years with little recognition and deserve congratulations. At the same time, residents need thanking for understanding the inevitable effects of cutbacks.

I recently had a private meeting with Matt Hancock, Secretary of State for Health, when I emphasised the opposition to the unacceptable proposals of reducing services at Weston General Hospital. Weston-super-Mare and surrounding area will soon be bigger than Bath so to reduce health services for a rapidly growing population makes no sense. Although this is an NHS issue, the council will continue to stress the local need and strength of feeling for their local hospital.

I also met Kit Malthouse, Minister for Housing, and again explained the real

problem caused by far too many new homes being forced onto North Somerset. He genuinely understood the problems of poor-quality design from some mass developers. Buildings that will never look part of the town or village, the lack of facilities, high costs, the years they take to complete and lack of suitable road and transport access. He mentioned a government review taking place to address these issues but like most things, Europe is currently getting all the attention.

Who knows what is going to happen about Brexit on March 29?

In.. Out.. Delayed..? It may have divided the country between Leavers and Remainers, as the subject of Europe has for years and will probably continue to do so, it is an important matter, but I'm sure many on both sides are either just fed up, confused or appalled at the behaviour and language of a few who should know better.

Despite what happens in London, don't forget on Thursday 2 May we have local government elections, including North Somerset Council and your local town or parish council. Whatever your politics, whoever you support, please try and take the time to vote. Local services are important to us all.

Councillor Nigel Ashton  
Leader of North Somerset Council

## Contents



- 4** News update
- 10** Help collar irresponsible dog owners
- 12** Council tax set for year ahead
- 14** Countdown to local elections
- 16** Saving money in 2019
- 18** New conservation area for Weston-super-Mare
- 24** Walk around Sandford
- 28** Love your library service
- 30** Vegan businesses booming
- 40** Building stronger communities
- 42** What happens to plastic recycling?
- 47** Tide times

North Somerset Council does not endorse or recommend any commercial products or services advertising in *Life* magazine.

This publication is available in large print, Braille or audio formats on request. Help is also available for people who require council information in languages other than English.

## Banksy's Dismaland pinwheel to be displayed on Weston's High Street

A pinwheel gifted to Weston-super-Mare from global graffiti artist Banksy is set to be displayed in the town centre.

The seven-metre high pinwheel featured in Banksy's pop-up bemusement park Dismaland in 2015.

Thanks to a cash injection of £50,000 from the Government's Coastal Revival Fund, North Somerset Council is moving the pinwheel from storage to the town

centre and securing Banksy's legacy for the town.

The structure will be refurbished and relocated in the Italian Gardens in time for the summer season, with a future programme of on-going community engagement and activities.

Further public realm improvements are taking place in the town, such as South Parade and a future bus interchange at Alexandra Parade.



### ADVERTISEMENT



WE'VE GOT WEDDINGS

# All Wrapped Up

for only  
**£3,999**

for 50 Day Guests and 80 Evening Guests  
for selected dates only.

Additional Day Guests £59.00 per head  
Additional Evening Guests £16.95 per head

Terms and conditions apply. For new bookings only for selected dates,  
subject to availability at the time of booking.

01934 834 343 (OPTION 1) | [weddings@cadburyhouse.com](mailto:weddings@cadburyhouse.com)

[CADBURYHOTELBRISTOL.CO.UK](http://CADBURYHOTELBRISTOL.CO.UK)

## Tell us your top future transport priorities

Have your say on how you move around North Somerset and help shape how transport schemes are prioritised in the coming years.

The draft Joint Local Transport Plan (JLTP4) needs your involvement before it is finalised.

The document addresses existing and expected challenges, including planned housing and employment growth, and looks at improving connections for people and businesses across all transport types.

As well as looking for residents' feedback and comments, the consultation also asks where you would invest to make changes.

This is the fourth plan developed by North Somerset, Bristol, Bath and North East Somerset, and South Gloucestershire councils, and the latest version also includes the West of England Combined Authority.



The consultation is open now until Wednesday 20 March. For more information and to comment visit [www.travelwest.info/projects/joint-local-transport-plan](http://www.travelwest.info/projects/joint-local-transport-plan)



## Station Road improvements

Station Road in Weston-super-Mare is set to be improved following a successful bid for almost £5m from the West of England Enterprise Partnership and the Department for Transport.

Construction work, part of the town centre regeneration programme, will start in April with traffic management in place.

Visit [www.roadworks.org](http://www.roadworks.org) for updated information.

## Contacts

### Call us

For all council services, call **01934 888 888** (Mon-Fri, 9am-5pm)

At the prompt, say who you want to talk to if you know their name, or say what you want to talk about in a word or two.

Direct numbers for other popular services:

For waste and recycling, road issues, planning and building control:

**01934 888 802**  
(Mon-Fri, 9am-5pm)

For council tax and benefits: **01934 888 144**  
(Mon-Fri, 9am-5pm)

For social services: **01275 888 801**  
(Mon-Fri, 8am-6pm)



Do it online – report it, request it or pay for it at: [www.n-somerset.gov.uk/connect](http://www.n-somerset.gov.uk/connect)

Or go straight to these popular web pages by adding these shortcuts: [www.n-somerset.gov.uk/myaccount](http://www.n-somerset.gov.uk/myaccount) / [planning](http://www.n-somerset.gov.uk/planning) / [schooladmissions](http://www.n-somerset.gov.uk/schooladmissions) / [wastecollections](http://www.n-somerset.gov.uk/wastecollections) / [termdates](http://www.n-somerset.gov.uk/termdates)

## ADVERTISEMENT

Putting Residents First

# Sewell House

Stress free living in the heart of Winscombe



## Independent living in a small friendly community setting

Rent your own self-contained, en suite flat with private kitchenette  
Residents enjoy a daily three course lunch together

**With on-site support and 24 hour emergency cover, you keep your independence without worry**

**Open Day Thursday 14th March, 2-5pm**  
**Guided Tours and Refreshments**

Visitors welcome at other times by appointment

Sewell House, Belmont Rd., Winscombe, North Somerset BS25 1LQ

**01934 843 746**

[warden.sewell@btconnect.com](mailto:warden.sewell@btconnect.com) | [www.sewellhouse.org.uk](http://www.sewellhouse.org.uk)

Sidcot Friends Housing Society Ltd – a not-for-profit organisation



## Young people could win a trip to Germany

Two young people from Weston-super-Mare will visit Germany for free later this year in celebration of 50 years of the town's youth exchange programme.

Organisers of the Weston and Hildesheim youth exchange are giving away two places on the scheme later this year to mark its half-century anniversary.

The youth exchange is for young people aged 13 to 17 and gives them the opportunity to learn about the German culture by staying with host families during the October school holidays.

To be in with the chance of winning a funded place, young people must write between 350 and 500 words saying why they

would like to take part and why they should be chosen.

The closing date for entries is Saturday 1 June and winners will be notified by Tuesday 30 July.

The scheme is supported by Weston Town Council and Weston-super-Mare YMCA.

Families in Weston-super-Mare are also needed to host young people from Germany during the Easter holidays.

The young people have a full schedule and host families are encouraged to take part in the trips, if possible.

To enter the competition or find out more about the exchange, email Debbie Stone at [debbiestone67@btinternet.com](mailto:debbiestone67@btinternet.com) or call 01934 418 713



### ADVERTISEMENT

Properties from £175,000

Annual service charges apply.

# Retire and relax

In the heart of North Somerset is **Sandford Station**, a lively retirement village with a great community spirit. The excellent facilities and staff provide the perfect retirement lifestyle.

To find out more or book a place on an open day call **0117 919 4262**. Or visit our show home open every Thursday 10am-12noon.

[www.stmonicastrust.org.uk/villages/sandford-station](http://www.stmonicastrust.org.uk/villages/sandford-station)



**St Monica Trust**

# Planners to consider airport expansion

## Plans to expand Bristol Airport are due to be considered by North Somerset Council in the near future.

The airport has submitted a planning application to carry out works which will enable it to accommodate up to 12 million passengers a year by 2026.

There is a current restriction of 10 million passengers a year and the airport expects to reach this figure by about 2021.

Proposed works include:

- extending the terminal building
- a new multi-storey car park providing about 2,150 spaces
- re-configuring the road system within the airport itself
- extending the silver zone car park to provide about 2,700 more spaces
- alterations to a section of the A38 near the airport.

The airport is also proposing no seasonal restrictions on the 4,000 night flights allowed between 11.30pm and 6am. Currently, a maximum of 3,000 of these night

flights are allowed during the summer.

The council has carried out extensive public consultation with local residents, town and parish councils, MPs, adjoining local authorities, professional bodies and national and local organisations and has received more than 2,000 comments. The application will now go to the council's planning and regulatory committee for a decision.

The planning application and comments received can be viewed on the council's website at [www.n-somerset.gov.uk/airportconsultation](http://www.n-somerset.gov.uk/airportconsultation)

# Pub owner fined following food poisoning outbreak

A businessman was ordered to pay £18,935 following the largest ever food poisoning outbreak in North Somerset.

Last year 186 people fell ill after eating at the Old Farmhouse in Trendlewood Way, Nailsea, on Mother's Day.

Eric Joseph Montgomery, sole director of M&M Hospitality and Catering, pleaded guilty to two offences at North Somerset Magistrates in January.

Montgomery was fined £10,000 for serving contaminated food and £4,000 for lack of documented procedures.

He was also ordered to pay £170 in victim support surcharge and £4,765 in costs to North Somerset Council.

The diners suffered food poisoning symptoms from the Clostridium Perfringens toxin that had been cross-contaminated across four sittings of the pub's carvery.

The outbreak prompted a detailed investigation by North Somerset Council's food and safety team, supported by Public Health England (PHE).

The council worked over a number of months with the pub management to implement key systems and training to ensure that food hygiene standards improved.

Dr Andrew Burnett, interim director of public health at North Somerset Council, said: "North Somerset Council is committed to protecting the health of our residents.

"In addition to routine inspections, we provide advice and support to enable businesses to meet health and safety requirements – but we will prosecute if business owners significantly fail in their duty to uphold food hygiene and related standards."

Mr Montgomery is no longer involved with the Old Farmhouse. It is now under new management and has a food hygiene rating of five.



## Weston-super-Mare's purple reign continues

Evening and night-time visitors to Weston-super-Mare can be confident they'll enjoy a safe night out after the town retained its Purple Flag status for the fourth year.

The recognition follows a joint submission by North Somerset Council and the Weston Business Improvement District (BID) to the Association of Town and City Management, who manage the national accreditation scheme.

Towns achieving Purple Flag status are recognised for providing a vibrant mix of night-time

entertainment while promoting the safety and wellbeing of visitors and local residents.

Assessors said Weston continues to demonstrate good practice and innovation in the re-development and management of its evening and night-time economy.

Positive initiatives include the recent launch of the Best Bar None accreditation scheme, which aims to promote responsible management and operation of licensed premises, and the traffic light scheme which ensures licensed premises meet certain standards.

### ADVERTISEMENT

**Shaw care homes**  
wellness • happiness • kindness

**Sycamore Lodge  
Nursing Home**

Lodge Lane, Nailsea,  
North Somerset  
BS48 1LX

Home Manager:  
Caroline Carter

Call:  
01275 858 000

Email:  
SycamoreLodge.Manager@Shaw.co.uk

shawhealthcare  
 @shawhealthcare  
 www.shaw.co.uk

Inspected and rated  
**Good**  
 CareQuality  
 Commission

Respite &  
 Long Term  
 Care Options

We offer a complete pathway of dementia care, and now also have a new 18 bedded general nursing service on site. All with a dedicated caring staff team, creating a homely atmosphere for everyone.

- Nursing Dementia Care • General Nursing Care
- Day Care • Residential Dementia Care



## Spot the warning signs of child sexual exploitation

Any child or young person can become a victim of child sexual exploitation so people in North Somerset are being urged to be vigilant.

Child sexual exploitation (CSE) occurs where an individual or group takes advantage of an imbalance of power to coerce, manipulate or deceive a child or young person under the age of 18 into sexual activity.

Victims of CSE are extremely vulnerable and may not see themselves as victims.

It does not always involve physical contact and can also occur through using technology.

Abusers can also be younger than most people believe and the signs of grooming aren't always recognised by victims, friends and family.

If you know or suspect a child is in immediate danger, call **999**.

If you suspect a child may be at risk, or have any information relating to child sexual exploitation, contact the police on **101**.

Barnardo's:  
[www.barnardos.org.uk](http://www.barnardos.org.uk)

NSPCC:  
[www.nspcc.org.uk](http://www.nspcc.org.uk)

Thinkuknow gives honest and frank advice:  
[www.thinkuknow.co.uk](http://www.thinkuknow.co.uk)



## Bus service changes

Changes are coming to a number of bus services operated by First West of England in North Somerset in March and April.

Bus services 1, 20 and 126 will begin operating their summer timetables from Sunday 31 March.

This includes the reintroduction of a Sunday and public holiday service during summer on all three services.

At the time of *Life* going to print, details of a service change on Sunday 28 April had not been confirmed.

Full details will be available at [www.firstgroup.com/bristol-bath-and-west](http://www.firstgroup.com/bristol-bath-and-west) in the weeks running up to that date.

More information will be available in the May/June edition of *Life*.

## Mini police to expand in North Somerset

Schoolchildren in North Somerset are getting first-hand experience of being in the police force thanks to a new scheme.

Bournville Primary School, in Weston-super-Mare, became the first school in North Somerset to launch Avon and Somerset Police's mini police scheme in October.

The initiative is part of a national scheme delivered by neighbourhood policing teams and offers

primary school children the chance to build positive relationships with their local police team, while helping out in their wider community.

Children, aged between nine and 10, learn what it means to be a police officer and the importance of

communities working in partnership with the police to help protect them from crime.

It also aims to get children thinking about how getting involved in criminality can affect their lives.



If you'd like your local school to sign up, contact your local neighbourhood policing team through [www.avonandsomerset.police.uk/your-area](http://www.avonandsomerset.police.uk/your-area)





# Help collar irresponsible

**A zero-tolerance campaign against dog fouling is taking place this month to help clean up North Somerset – and you could help.**

Wellbeing and vitality in the area is a shared responsibility and one that residents can be more involved in.

North Somerset Council is running a month of action throughout March to crack down on dog fouling and is encouraging residents to report any irresponsible owners.

The month of action is being led by officers from North Somerset Council and Avon and Somerset Police.

Uniformed officers will be out and about across the area to ensure dog owners are complying with local public space protection orders (PSPOs).

If someone is believed to have breached a PSPO they can be fined £75 and it must be paid within 14 days.

If it's not, the council can prosecute, which could then lead to a maximum fine of £1,000.

Read on to find out more...

## What are the local laws?

Public Space Protection Orders (known as PSPOs) came into force in October 2017 to replace the previous dog control orders.

PSPOs apply to every public open space in North Somerset, including places where the public has to pay to enter.

The orders state that if you are in charge of a dog you must, as a minimum...

- keep your dog(s) under close control at all times
- carry a poo bag
- bag it and bin it
- keep your dog(s) out of children's play areas

There are also orders for specific locations if you are in charge of a dog. These include:

- not allowing your dog(s) to go on land that they are banned from
- keeping your dog(s) on a lead in set areas.

Find out where North Somerset's public space protection orders are by using the interactive map at [www.n-somerset.gov.uk/pspo](http://www.n-somerset.gov.uk/pspo)



# le dog owners



## Huge penalty for dog fouling

Failing to pick up dog poo has landed one dog owner with a bill of £4,203 – after he was caught on camera.

Carl Davies, now living in London, was ordered to pay the huge amount earlier this year after failing on three occasions to pick up after his dog on the Beach Lawns in Weston-super-Mare.

Davies pleaded not guilty to the offences, which took place

in March last year, but he was found guilty in court.

A local resident had filmed Davies and handed his footage to the council.

The council issued fixed penalty notices at first but Davies failed to pay them, so the matter went to court.

Davies was fined £100 for each offence, ordered to pay a £30 victim surcharge and £3,873 in costs to North Somerset Council.



## Beach litter pick

Could you be a local litter picking hero and help create a cleaner coastline?

North Somerset Council is organising a Clean Up Weston weekend on Saturday 6 and Sunday 7 April, as part of the Cleaner Coastlines initiative.

Various local community organisations from Weston and Worle have registered an interest to join in the activity, which is also as part of Keep Britain Tidy's Great British Spring Clean month.

To get involved email [events@n-somerset.gov.uk](mailto:events@n-somerset.gov.uk)



If you see a dog in a controlled area breaching a public space protection order, report it online at [www.n-somerset.gov.uk/pspo](http://www.n-somerset.gov.uk/pspo)

# Council tax bills coming this month

## Households across North Somerset will receive their council tax bills for the year ahead this month.

Last month councillors set the budget and council tax levels for the new financial year.

At the time of *Life* going to print, a rise of 2.75 per cent was expected, below the current level of inflation.

There are increasing demands on the council's services and many of its cost pressures are well above the level of inflation.

These pressures mainly relate to the demand within social care, as well as increases in the national living wage, which affects the council's own staff and also what it pays its contractors.

North Somerset Council has to balance its responsibilities and priorities against the money it has available to spend.

For this coming year, budget reductions of £11m are needed to maintain and protect vital front-line services.

Funding from central government continues to reduce and so the council is increasingly reliant on money it can generate locally, through council tax, business rates and fees and charges.

This means it is important that North Somerset continues to grow, to maximise income generation opportunities.

Sound commercial investments made over the previous two years have already increased the council's revenue by more than £1m.

## What can I expect to pay?



This year's anticipated rise of 2.75 per cent means an average household (Band D) would pay £1,378.50 in 2019/20 for North Somerset's share of the council tax bill – about £26.51 a week.



# What is council tax?

Council tax is a property tax levied by local councils to fund the services they provide.

This includes education, recycling and waste collections, social care, libraries, leisure and recreation, planning, highways, transport, street lighting and much more.

It is anticipated that funding from residents and businesses – through council tax and business rates – will make up the majority of the council's income by 2020, with only a small proportion coming from central government grants.

The council tax bill also includes charges for Avon and Somerset Police Authority, Avon Fire and Rescue and town and parish councils.

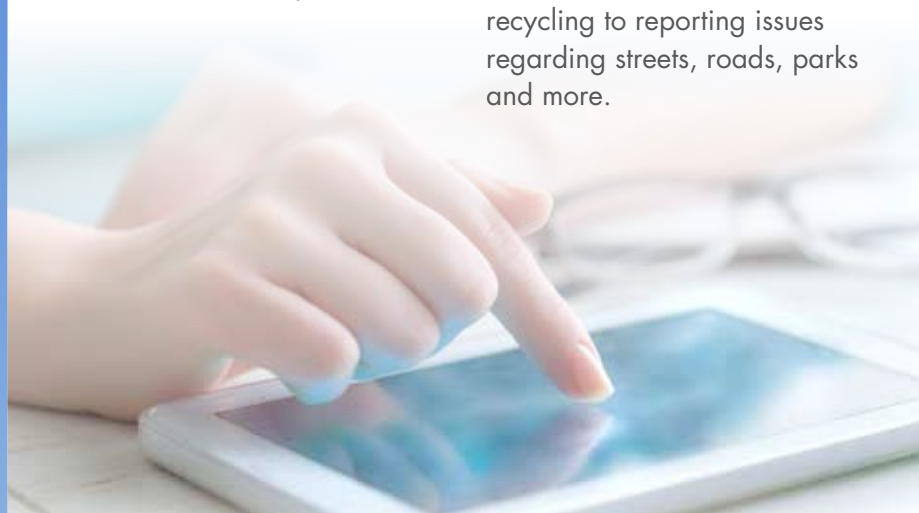
North Somerset Council has no control over the level of these charges.



## Sign up to e-billing and manage your council tax online

Sign up for e-billing to view and download your latest council tax bill, view your billing history and receive information by email.

Through the council's online MyAccount service you can also access many other council services – from waste and recycling to reporting issues regarding streets, roads, parks and more.



Sign up online at [www.n-somerset.gov.uk/myaccount](http://www.n-somerset.gov.uk/myaccount)

# Countdown to

## Local elections take place soon in North Somerset – giving you the chance to have your say on who should represent you locally.

On Thursday 2 May, residents will choose who will take the 50 seats on North Somerset Council and 436 seats on the area's 39 parish councils.

## Why should I vote?

As soon as you walk out of your front door you are affected by council services in some way, shape or form.

The people elected will have responsibility for deciding how these services are delivered so it's important that residents take the opportunity to have their say on who these people should be.

## What's the difference between North Somerset Council and the parish councils?

North Somerset Council is one of the UK's 47 unitary councils. This means it is responsible for the vast majority of services used by residents, from recycling and roads to libraries and social care.

Parish councils tend to be more 'grass roots'. They have fewer decision-making powers or financial clout but perform a vital role for their local community.

## Am I allowed to vote?

To vote in May's elections you must be:

- on the electoral register
- aged 18 or over on the day of the election
- a British, Commonwealth, Irish or European citizen registered to vote as a UK resident (this is the law as it currently stands).

The deadline to submit your application to be added to the electoral register is midnight on Friday 12 April. Contact electoral services to find out more.

## When will we know who the candidates are?

The deadline to apply as a candidate is 4pm on Wednesday 3 April. A full list will be published by 4pm on Thursday 4 April.

You will be able to view it at [www.n-somerset.gov.uk/elections](http://www.n-somerset.gov.uk/elections)

## Where can I find out more about the candidates?

Candidates who are standing will be using the time between now and the election to promote themselves and tell people how they intend to represent them if they're elected. Look out for leaflets or press statements issued by them.

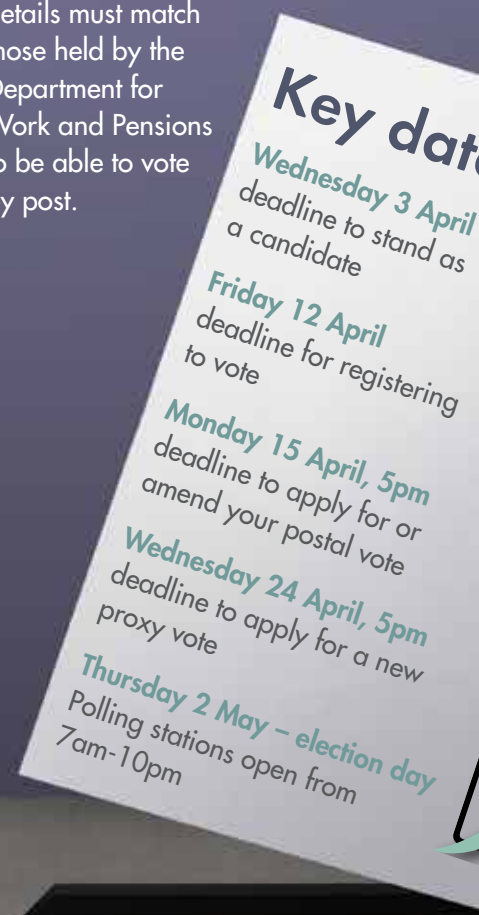
## How do I vote?

### In person

Visit the local polling station printed on your poll card between 7am and 10pm on Thursday 2 May.

### By post

Complete an application form and return it to the council by 5pm on Monday 15 April. Postal ballot papers will be sent out around Thursday 18 April and must be returned before voting closes at 10pm on Thursday 2 May. Your details must match those held by the Department for Work and Pensions to be able to vote by post.



# Local elections

## By proxy

A proxy is someone who votes on your behalf. Complete an application form and return it to the council by Wednesday 24 April. Reasons for doing this must be given. Your details and your proxy's details must match those held by the Department for Work and Pensions to be able to vote this way.

Your proxy must be able to attend your allocated polling station.

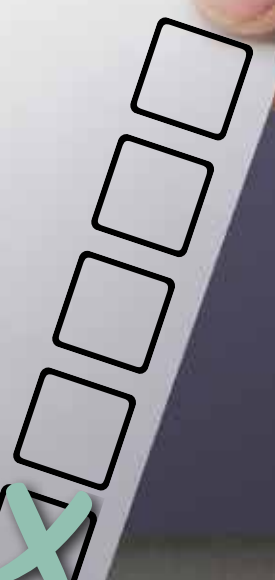
## Where do I find my local polling station?

All information will be on the voting pollcards sent out in late March. Locations will also appear on the council's website, in council offices and all libraries.

## When will I find out the result?

All votes will be verified after polls close at 10pm. Counting will then take place on Friday 3 May. Results will be published on the council's website following the declaration.

es



## Could you be a councillor?

It's not too late to stand as a councillor in North Somerset's local election if you want to make a difference in your community.

The deadline for standing as a candidate is Wednesday 3 April.

Being an effective councillor requires both commitment and hard work. Councillors must balance the needs and interests of residents with the political party they represent (if any) and the council.

Find out more at [www.gov.uk/government/get-involved/take-part/become-a-councillor](http://www.gov.uk/government/get-involved/take-part/become-a-councillor)

## Would you like to get involved with the election?

Casual staff are employed by the council to deliver the election.

Roles include:

- staffing polling stations from 6am to about 10.30pm on Thursday 2 May
- verification of the votes overnight after polls close
- counting votes during the daytime on Friday 3 May.

Payment is given for the different roles and training provided.

If you are interested or would like more information, email [electoral.staffing@n-somerset.gov.uk](mailto:electoral.staffing@n-somerset.gov.uk)

## Electoral services:

01934 634 909

[electoral.services@n-somerset.gov.uk](mailto:electoral.services@n-somerset.gov.uk)

[www.n-somerset.gov.uk/elections](http://www.n-somerset.gov.uk/elections)

# Savvy ways to

**Getting your finances in order might seem daunting but now could be the right time to take stock of your income and outgoings.**

If you spend a couple of hours fixing your finances it could dramatically increase the amount of money you have left over each month.

Here are some ideas to get you started...

## Money

- ✓ Sign up to e-billing on the council's website to view and download your latest council tax bill, view your billing history and receive information by email. Visit [www.n-somerset.gov.uk/myaccount](http://www.n-somerset.gov.uk/myaccount)
- ✓ People on a low income or claiming benefits can get support to help pay council tax. A single person discount is also available. Visit [www.n-somerset.gov.uk/counciltax](http://www.n-somerset.gov.uk/counciltax)
- ✓ Go over your paperwork and make a note of all the financial anniversaries, such as home insurance renewal or the car's MOT. Shop around for better deals using price comparison websites.
- ✓ Transfer your debt – if you're making large interest payments, it might make financial sense to transfer it all onto a credit card with a 0 per cent balance-transfer deal. Visit [www.moneysavingexpert.com](http://www.moneysavingexpert.com) for the latest deals.



- ✓ Check you're on the right tax code at [www.gov.uk/tax-codes](http://www.gov.uk/tax-codes)
- ✓ Claim all the tax reliefs you're entitled to. Visit [www.gov.uk/benefits-calculators](http://www.gov.uk/benefits-calculators) or contact North Somerset Citizen Advice Bureau on [www.nscab.org.uk](http://www.nscab.org.uk) or 03444 111 444
- ✓ Cancel unnecessary direct debits.
- ✓ Get a better mobile phone deal – look at your monthly averages to make sure your call, text, and data bundles are suitable.

## Around the home

- ✓ Turn down the heating – reducing room temperatures by just 1°C could cut heating bills by 10 per cent.
- ✓ Install insulation – find out if you're eligible for a grant or discount for loft or cavity wall insulation.
- ✓ Insulation and heating improvement funding is available through the Energy Company Obligation Flexible Eligibility scheme. Visit [www.cse.org.uk/advice](http://www.cse.org.uk/advice) or call 0800 082 2234.
- ✓ Have a free, online home-energy check on the Energy Saving Trust website, [www.energysavingtrust.org.uk](http://www.energysavingtrust.org.uk)
- ✓ A community bulk oil buying scheme is available through the West of England Rural Network. Visit [www.wern.org.uk/oil](http://www.wern.org.uk/oil) or call 01275 333 701
- ✓ Residents whose homes are heated by oil, wood, coal or LPG (gas) may be able to bulk-buy fuel through a low-cost loan from Wessex Resolutions. Homeowners and private tenants with a household income of less than £30,000 a year can apply. It can be used in conjunction with the bulk oil buying scheme above. [www.wricic.org.uk](http://www.wricic.org.uk) or 01823 461 099
- ✓ Low-cost loans are also available through Wessex Resolutions for essential home repairs or improvements, such as a new boiler. Visit [www.wricic.org.uk](http://www.wricic.org.uk) or call 01823 461 099
- ✓ Genuine energy debt could be cleared through a grant. Contact Talking Money on [www.talkingmoney.org.uk](http://www.talkingmoney.org.uk) or 0117 954 3990
- ✓ Grants are available for vulnerable or low-income households to get a free gas connection. Apply to Warm West (in partnership with Wales and West Utilities) at [www.ieservices.org.uk](http://www.ieservices.org.uk) or 01656 747 623
- ✓ Low cost loans of up to £5,000 are available for first-time buyers in North Somerset to help with moving costs, such as removals or legal fees. Visit [www.n-somerset.gov.uk/firsttimebuyers](http://www.n-somerset.gov.uk/firsttimebuyers)



# save money

## Shopping

- ✓ Use money-off vouchers and discounts, through store loyalty cards or smartphone voucher apps.
- ✓ Try haggling over big-ticket items, such as car dealers or travel agents
- ✓ Buy supermarket own brands.
- ✓ Cut down on meat or try cheaper cuts.
- ✓ Buy in bulk but don't be duped by discounts – only buy what you will really use.
- ✓ Visit [www.lovefoodhatewaste.com](http://www.lovefoodhatewaste.com) for left-over recipe ideas



## Leisure

- ✓ Swap private sports centre membership to a public leisure centre run on behalf of North Somerset Council.  
[www.n-somerset.gov.uk/leisurecentres](http://www.n-somerset.gov.uk/leisurecentres)
- ✓ Adults in Weston-super-Mare can get free health advice through the Health Trainers service. Email [health.trainers@n-somerset.gov.uk](mailto:health.trainers@n-somerset.gov.uk)
- ✓ Instead of buying books, why not join the library? Choose from more than 2.5 million items and borrow and reserve for free.  
[www.librarieswest.org.uk](http://www.librarieswest.org.uk)
- ✓ Would you like a new hobby? Try researching your family history using the Ancestry database or research local history resources in your local library.
- ✓ Lots of free events take place at your local library, such as story time or Bookstart Rhymetimes for pre-school children. Visit [www.n-somerset.gov.uk/libraryevents](http://www.n-somerset.gov.uk/libraryevents) or NSLibraries on Facebook
- ✓ Eat out off-peak or join a dining club for discounts in restaurants
- ✓ Take advantage of over-60s discounts. Use the Diamond Travelcard to use off-peak buses for free in North Somerset  
[www.n-somerset.gov.uk/diamond](http://www.n-somerset.gov.uk/diamond)
- ✓ Try cycling or walking short distances instead of using the car. For cycle routes and ideas visit [www.betterbybike.info](http://www.betterbybike.info)
- ✓ Join a walking group – free health walks lasting between 30 and 90 minutes take place every week across North Somerset. Visit [www.n-somerset.gov.uk/healthwalks](http://www.n-somerset.gov.uk/healthwalks)
- ✓ Free eBooks, eAudiobooks and eMagazines are also available from [www.librarieswest.org.uk](http://www.librarieswest.org.uk)



# Conserving Weston-super-Mare's heritage



**One large conservation area now covers Weston-super-Mare and its town centre – and it will unlock more than £500,000 in grant money.**

The Great Weston Conservation Area now stretches from Birnbeck Pier to Royal Sands, including the town centre, and was adopted by North Somerset Council in December.

By including the town centre, North Somerset Council can now gain access to the partnership grants scheme from Historic England.

This will generate at least £500,000 of grants over the next four years to enhance shop fronts.

It will also enable the council to work with shop owners and residents as partners and stakeholders in shaping Weston as a quality place to live, work and enjoy.

Cara MacMahon, North Somerset Council's Heritage Action Zone officer, said: "The adoption of Great Weston Conservation Area is a game changer and marks an important shift in how Weston sees itself.

"New design in the town must now match the established quality and character of Weston-super-Mare.

"This new conservation area and management plans will provide the tools to help halt the decline in quality and maintenance in some parts of the town."

The new, larger conservation area brings together the previous conservation areas in Weston, adding new roads and properties.

It now covers:

- Birnbeck
- Melrose
- Grove Park
- Boulevard
- Montpellier
- Beach Lawns
- Ellenborough Park
- Town centre
- Milton Road cemetery
- Whitecross Road and surrounding areas
- Clarence Park

To see a map of the new conservation area visit

[www.n-somerset.gov.uk/heritagemap](http://www.n-somerset.gov.uk/heritagemap) and click on 'conservation areas'.

View documents and character area appraisals about the Great Weston Conservation Area at the Town Hall library in Weston-super-Mare or [www.n-somerset.gov.uk/conservation-areas](http://www.n-somerset.gov.uk/conservation-areas)





Great  
Weston  
Conservation  
Area

© Crown copyright and database rights 2019  
Ordnance Survey 100023397. You are not  
permitted to copy, sublicense, distribute or sell  
this data to third parties in any form.

## How will the new conservation area affect me?

If your house now lies within the new conservation area, you may be wondering how it affects you and your property.

Conservation areas exist to protect the special architectural and historic interest of a place – features that make it unique and distinctive.

## Do I live in a conservation area?

Find out at [www.n-somerset.gov.uk/heritagemap](http://www.n-somerset.gov.uk/heritagemap) by clicking 'conservation areas'.

## Can I change the outside of my property?

There are restrictions on what you can do if it affects the outside appearance of your property.

This doesn't mean you can't make any changes, it just means there are more controls to protect the heritage of the area.

Living in a neighbourhood that is a part of history brings with it community spirit, with all residents taking pride in maintaining a historic area of Britain.

## Is my house worth more money?

Research by the London School of Economics and Historic England in 2012 showed that house prices in conservation areas go up nine per cent on average.

They also show greater appreciation in value than properties located elsewhere, retaining their value even during economic downturns.

Conservation areas enjoy protection from poor quality development so become more desirable places to live, which in turn is often reflected in higher property prices.

## What about new developments?

Where new development is deemed appropriate, a high standard of design is expected to preserve and/or enhance the existing character or appearance of the conservation area.



Are you interested in Weston's history and its future development?

Weston-super-Mare Civic Society works to stimulate public interest, promote high standards of planning and architecture, and to secure the preservation, protection, development and improvement of historic, environmental or public interest in the town.

Find out more about the society at [www.westoncivicsociety.org.uk](http://www.westoncivicsociety.org.uk)

View or download North Somerset Council's guide to living in a conservation area at [www.n-somerset.gov.uk/conservation-areas](http://www.n-somerset.gov.uk/conservation-areas)

Historic England provides a lot of information. Visit [www.historicengland.org.uk](http://www.historicengland.org.uk) and search for 'living in conservation area'.

# Find the right foster

**Foster carers make a big difference in their local community by providing a loving home for children – so could you join them?**



Fostering can be demanding but is hugely rewarding and means so much to the children who are unable to live with their own families for a variety of reasons.

Not all fostering is the same – you could care for a child for just a few days, offering respite care, or provide a long or short-term home.

Find out what type would suit your own family circumstances best...

## Short-term

Short-term foster carers provide a safe and nurturing place for a child to live until it's safe for them to return home, they are adopted, or move into long-term fostering. It may last a few days or up to two years depending on the situation, and is needed for all ages and often siblings.

### It could be suitable for...

Flexible people who can care for children at short notice. You'll prepare them to return home or for a longer-term placement. You'll need to be prepared to say goodbye when it's in the best interest of the child to move on.



## Long-term

If a young child is unable to return home or move in with a family member or close family friend, then adoption might be the answer.

If adoption isn't in the child's best interest – maybe because they are older or want to continue having contact with their birth family – then a long-term foster family will be found. This will be somewhere they can call home until they are ready for independence.

### It could be suitable for....

Carers who can commit to a child or young person until they're grown up (until 18 and possibly older). These children are fully involved in your family life and you will help them transition into adulthood.



# fostering match



## Respite

Respite fostering is a good option for those who can't commit to full-time fostering but would like to make their weekends and holidays more fulfilling.

Respite carers open up their homes for regular stays at agreed times, to give families or foster carers a break.

### It could be suitable for....

People who have less time available, perhaps because they work full or part-time, but would still like to offer care at the weekends or on a regular basis.



## Specialist

Anyone with experience or qualifications in caring for children or young people with additional or complex needs are needed to become specialist foster carers.

This might mean caring for teenage mothers with babies, children with learning or physical disabilities, or young people with challenging behaviour.

If you have experience of this and can help, get in touch with the team.



## Who can apply?



Carers are needed from a wide range of backgrounds to reflect all the children in the council's care.

You can apply regardless of sexuality, race, religion or marital status. You don't need to own your own home or have professional qualifications.

You just need a spare bedroom, to be over 21, have some experience of caring or working with children, and enough spare time, energy, patience and understanding to meet the needs of the child.

## Could you foster?



Call 01275 888 999 for more information.

The team is happy to chat to anyone who is interested. If the time isn't right now, it might be in the future.

[www.n-somerset.gov.uk/fostering](http://www.n-somerset.gov.uk/fostering)

[fosteringnorthsomerset](https://www.facebook.com/fosteringnorthsomerset)

[fosteringNS](https://twitter.com/fosteringNS)



# Clever gardening tips to deter burglars



Spring is in the air and if you're thinking of tidying up your garden, some clever planting could also make your home safer.

Creative crops could provide the perfect crime prevention as well as a lovely outdoor space for you and your family.

Avon and Somerset Police has some top tips for a beautiful garden:

## Grow hedging to act as a barrier

Plants have evolved over millions of years to protect themselves – and they can also help protect your home. Species with spiky leaves or thorns will make burglars think twice before trying to pass through or climb them. Berberis, hawthorn or blackthorn are ideal and there are some evergreen variations to provide year-round protection.



## Use fruit or veg wisely

Fruit or veg plots can act as a secondary line of defence. Try growing rows of spiky gooseberries or the Szechuan pepper plant. They will make an exit route uncomfortable for anyone trying to make a quick escape.

## Plant something spiky under windows

Rose bushes under windows not only look pretty but will also put off burglars trying to scope out what's on offer inside your home.



## Hide outbuildings with bushes and hedges

Hide small sheds or outbuildings containing valuables such as bikes or electric garden tools. Evergreen hedges like laurel, escallonia and grisalinia grow quickly to form a covering, as well as adding more green to your garden.

## Lock your gate and check fences are fully secure

Closed and locked gates act as a great psychological deterrent. Check fences aren't broken as they create a physical defence to anyone trying to gain entry to your garden. Make them doubly secure by adding a trellis to the top, which will make a loud noise if it's broken and alert you to any trespassers.

[www.avonandsomerset.police.uk](http://www.avonandsomerset.police.uk)





## Food and drink on the menu

A multi award-winning food and drink festival is continuing to expand across North Somerset to enable more people to feast on fantastic goods.

The eat:Festivals brand has become a staple in Weston-super-Mare's calendar and the popular event will also be visiting Portishead and Nailsea this year too.

The free festival features a large outdoor food and drink market as well as other attractions, such as demo stages with local chefs sharing their top tips.

Vegan, gluten free and vegetarian options are also available.

The next one is in the Italian Gardens in Weston-super-Mare on Saturday 13 April.

More festivals take place throughout the year:

- **eat:Portishead** – Saturday 10 August
- **eat:Weston** – Saturday 28 September
- **eat:Nailsea** – Saturday 5 October
- **eat:Christmas** – Saturday 14 December, Weston-super-Mare

The festivals are open from 9am to 5pm. The busiest times are 11am to 2pm so if you want the pick of the crop, you might need to arrive a little earlier.



[www.eatfestivals.org](http://www.eatfestivals.org)

## TROPICANA

### Upcoming Tropicana treats

Take a trip to the Tropicana this spring...

Friday 22 March

#### The Communicators

[www.thecommunicators.club](http://www.thecommunicators.club)

Saturday 6 – Monday 22 April

#### Funland at the Tropicana

[www.funlandtropicana.com](http://www.funlandtropicana.com)

Sunday 7 – Friday 12 April

#### Transend Skate Park

[www.transendskatepark.co.uk](http://www.transendskatepark.co.uk)

Saturday 20 April

#### The Sixties Invasion

[www.thesixtiesinvasion.com](http://www.thesixtiesinvasion.com)

Sunday 21 April

#### Weston-super-Mare Indoor Reggae Festival

For more information visit

[www.tropicana-weston.co.uk](http://www.tropicana-weston.co.uk)

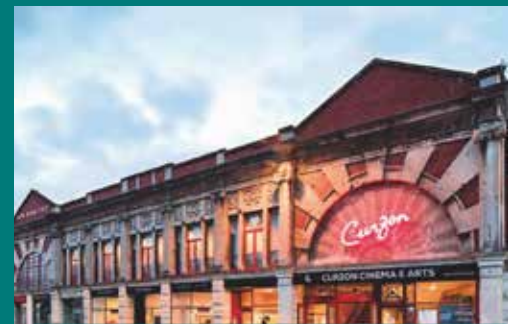
## Go behind the scenes of the Curzon

Have you ever wondered what it's like inside one of the oldest and continually-running cinemas in the UK?

A behind-the-scenes tour is taking place of the Grade II-listed Curzon Cinema, in Clevedon, at 10.30am on Thursday 21 March.

Have a look in the magnificent auditorium, relax in the Edwardian tea room, marvel at the extensive collection of 20th century film technology and glimpse the, as yet, unrestored balcony.

You'll also be able to contrast the 1960s Stanley Newton projection box with present day 4k digital technology.



Spaces are limited so advanced booking required. Call 01275 879 115

[www.curzon.org.uk](http://www.curzon.org.uk)





# Stretch your legs around Sandford



## Walk information

**Distance:** about 3 miles

**Difficulty:** medium to hard: narrow, rocky paths, a few wooden stiles, a steep climb. Paths can get muddy so wear suitable footwear

**Duration:** about 1.5 hours at a leisurely pace

**Map:** OS 141 Explorer

**Sandford is part of the Mendip Hills Area of Outstanding Natural Beauty and after a wander through woodland and a steep climb, you're rewarded with wonderful views across this rolling countryside.**



Start on Hill Road in Sandford and head up The Batch. Follow the paved path around The Old Bakery.

Continue around this house and follow the yellow waymarker to the right, veering uphill towards Batch House.

The footpath goes uphill alongside Batch House, becoming a narrow, muddy track.

Go through the metal gate and turn left, following the yellow waymarker.

At the junction in the path, go through the gate on your left, heading down towards the playing fields. Watch out for brambles as you walk across the grassy area.

Go through the next kissing gate and continue onwards. The path weaves through the trees, along the northern edge of the woodland, adjacent to the playing fields.

Watch out for overhanging branches and tree roots jutting out. It is a well-trodden path so you should be able to see it fairly easily, despite it weaving up and down through the trees.

Cross the stile and continue onwards. You will eventually come out at a bend in a paved driveway.

Head downhill and you will come to Mendip Snow Sports Centre. Head right, underneath the platform (the dry ski slope).

## How to get there

**Start at map ref:** ST 421594

**By car:** On-street parking available in nearby streets. Please park considerately.

**Refreshments:** Food and drink available at the Railway Inn, on the A368; the Alpine Lodge at Mendip Snow Sports Centre; and Lyncombe Lodge also welcomes walkers.





Continue past the main entrance and follow the signs for disc golf.

You will soon be back in the woodland. At an orienteering signpost, take the path on the right, which zigs zags up the hillside. These are permissive paths through the woodland.

When you reach the track, turn left and go over the stile next to the gate. Follow the gravel track as it circles around the mound.

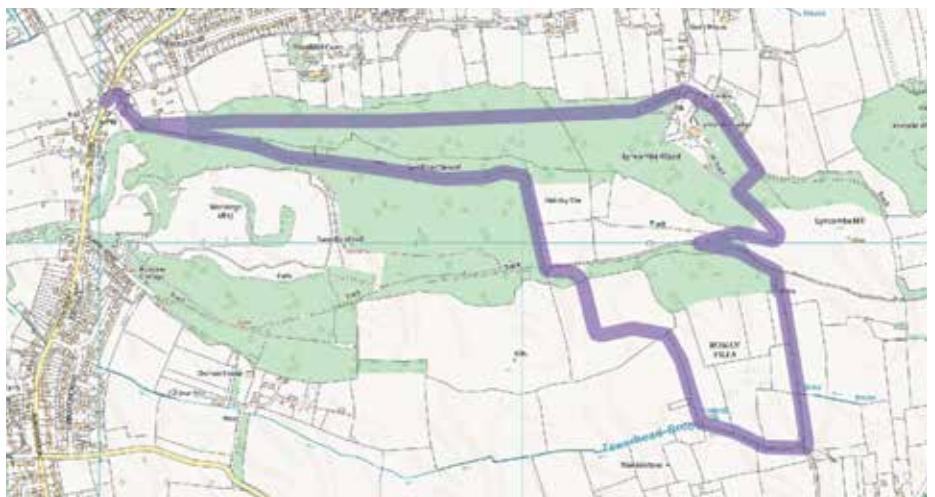
At the top, go through the big gate marked with a blue brideway sign. If you want to head straight back to Sandford, you can continue onwards on this route.

For a picturesque, longer route, go through the gate right next to the one you've just come through, to double-back on yourself. This is a narrow, rocky path.

At the junction turn right, signposted as a brideway. It becomes a wider track, running between fields.

At the end you'll come to a t-junction so turn right here.

Continue on and then turn right at the end. Walk up the hill, keeping to the left edge of the field.



This map is for guidance only and walkers should carry and use the OS 1:25000 map when out. © Crown copyright and database rights 2019 Ordnance Survey 100023397. You are not permitted to copy, sub-license, distribute or sell this data to third parties in any form.

At the top of the field, go over the stile and head to the left. Now continue upwards across the field. It's a steep climb but the views are magnificent.

Exit the field at the top, next to the water trough. Turn left onto the track, alongside the fence.

Go through the metal gate and back into the woods. The footpath is then immediately on your right, over a stile.

Follow this as it bends round to the left. Continue on here and it will eventually lead back to the path you were on at the beginning, which then leads back to The Batch.





## LOCAL EVENTS

### March

#### Saturday 16

**La Plus Belle Musique Sacree Francaise by Portishead Choral Society** 7.30pm, Methodist Church, High Street, Portishead. A programme of the best French sacred music. Tickets £12; £6 for children and full-time students from 01275 219 133 or tickets@portisheadchoral.co.uk

#### Tuesday 19

**Clevedon Music Club** hosting students from the **Royal Welsh College of Music and Drama (Cardiff)** 7.30pm, Teignmouth Room, Clevedon Community Centre, Princes Road. £9 on the door. 01275 875 262

#### Friday 22

**The Communicators Ska band** The Tropicana, Weston-super-Mare www.thecommunicators.club

#### Sunday 24

**Weston Super Half** Weston seafront. www.westonsuperhalf.co.uk

#### Saturday 30

**Churchill Music presents Peter Donohoe CBE performing All-Mozart piano series part 1** 4.30pm and 7.30pm, St Johns Church, Church Lane, Churchill (part 2 on Saturday 18 May). Tickets from 01934 852 589

#### Zakhele in Concert

7pm, Nailsea School, Mizzymeard Road. Gospel and traditional South African songs and dancing. Tickets from www.zaoundation.org – all proceeds to the Za Foundation.

#### Appalachian Spring by Nailsea Concert Orchestra

7.30pm, St Francis of Assisi Church, Nailsea. A sumptuous mix of classics from Mendelssohn and Copeland, Bernstein and Gershwin, Mozart and

Dvorak. Tickets in advance from Nailsea Music Shop or on the door. £12/concessions £10/under 18s £2.50.

**West Mendip Orchestra Concert** 7.45pm, St Mary's Church, Yatton. Weber Der Freischutz Overture, Mozart Flute Concerto in G, Dvorak Symphony No.6. Tickets £10 (concessions £8, students £2) on the door.

### April

#### Saturday 6 – Monday 22

**Funland @ The Tropicana** www.funlandtropicana.com

#### Sunday 7 – Friday 12

**Transend Skate Park** Tropicana, Weston. www.transendskatepark.co.uk

#### Saturday 13

**Eat:Weston food festival** Italian Gardens, Weston-super-Mare www.eatfestival.org

#### Saturday 20

**The Sixties Invasion** Tropicana, Weston-super-Mare. www.thesixtiesinvasion.com

#### Sunday 21

**Indoor Reggae Festival** Tropicana, Weston-super-Mare www.tropicana-weston.co.uk

### May

#### Friday 10

**All Sixties Night** 7.30pm, Weston-super-Mare Football Club, Winterstoke Road. Charity event in aid of Weston Hospicecare. Tickets £10 from 01934 522 511; Weston Football Club (01934 621 618); Weston Hospicecare (01934 423 960); or the Weston Hospicecare shop in Worle High Street.

## CLUBS AND SOCIETIES

### Mondays

**Craft and sewing sessions** (E) 10am-1pm and 1-4pm, Weston-super-Mare.

Contact 01934 643 261 or emmabilly25@gmail.com

#### Weston Monday Art Group

(E) 10am, St Saviour's Church Hall, Locking Rd. 01934 514 127

#### Winscombe District U3A

**Coffee Morning** (1, except Aug) 10am, Winscombe Community Centre. £1 inc refreshments.

#### Tots 1

(E, term time only) 10-11.30am, Bristol Road Baptist Church, Southside, Weston-super-Mare

#### Iron Age hillfort of Weston-super-Mare restoration group

(E) (and Fridays) 10am-noon, access from Trinity Road. 01934 412 038

#### Winscombe Probus Club

(2 and 4) 10.30am, Winscombe Community Centre. 01934 782 505

#### Duplicate bridge

(E) (and Thurs, Fri, Sat) 1.30pm, 21 Montpelier, Weston. 01934 633 530

#### Kewstoke Arts and Crafts Group

(E) 2pm, Village Hall. 01934 628 309

#### Georgian Club for over 60s

(E) 2pm, St Georges Community Centre, Willow Close. 01934 510 953

#### NHS Retirement Fellowship

(2) 2pm, Our Lady of Lourdes Church Hall, Worle. 01934 417 850

#### Winscombe District U3A

(3, except Aug and Dec) 2pm, Winscombe Community Centre. £1.50 members, £2 non-members.

#### Yatton Art Group

(E) 2.15pm, Village Hall. 01934 249 907

#### Clevedon Mixed Leisure Club

(1 and 3) 2.30pm, Consti Club, Kenn Road. 01275 875 179

#### Weston Flower Arrangement Society

(4) 2.30pm, St Georges Hall. 01934 812 177

**Whist drive-in**, Portishead (E) 7.15pm. 01275 844 290 or 848 505

**Clevedon Lions Club** (3) 7.15pm, Walton Hotel. 01275 878 983

#### Weston Amateur Radio Society

(E) 7.30pm, Weston Social Club, Drove Rd. 01761 221 206

#### Weston Quilters

(1) 7.30pm, United Reform Church, Waterloo Street. 01934 834278

#### Clevedon Gardeners Club

(2 and 4, Sept-Mar) 7.30pm, Room 2, Clevedon Community Centre, Princes Road. clevedongardeners@gmail.com

#### Worle Lions

(2) 8pm, Windsor Castle pub. www.worlelions.co.uk, 08458 339 862

#### Lions Club of Portishead

(2) 8pm, Clarence House, High Street. 08432 895 330

#### Nailsea Lions Club

(2) 8pm, Grove Sports Centre. 01275 855 046

#### Yatton WI

(2) 8pm, Yatton Village Hall. 01934 834 796

#### Royal British Legion (Portishead)

(3) 8pm, Clarence House, High Street. 01934 251 468

### Tuesdays

**Weston U3A** (E) 10am, Friends Meeting House, High Street

#### Art Group

(E) 10am, Hutton Village Hall. Any medium. 01278 784 032 or 07977 323 553.

#### Mendip Art Group

(E) 10am, Banwell Village Hall. 01934 645 885

#### North Somerset Botanical Painting Society

(E) 10am, Brackenwood Garden Centre, Abbots Leigh. 01934 832 952

#### Age UK free advice sessions

(1) 10am-noon, Portishead Library, (2) 10am-noon, Nailsea Library, (4) 9.30am-12.30pm, Winscombe GP surgery. 0845 643 4621

**Coffee and Chat** (E, also Saturdays) 10am-noon, Portishead High Street Methodist Church, Portishead. 01275 844 917

#### Friends of Trendlewood Park

(3) (and first Sun) 10am-1pm, Trendlewood Park, Nailsea. www.friendsoftrendlewoodpark.org.uk, 07879 607 492

#### Clevedon Happy Companions Club

(E) 10.30am-2.30pm. Small, friendly social group for 4th age Clevedonians. 07887 744 295

#### Coffee Stop drop-in coffee morning

(E) 10.30am, Milton Baptist Church, Baytree Rd. 01934 641 574

#### Kewstoke's Tiny Teds Toddler Group

(E) 10.30am-noon, St Paul's Church Hall. £2 per family. 07980 384 034

#### Clevedon Probus Club

1974 (1)(3) 10.30am, Community Centre, Princes Rd. 01275 876 297

#### Clevedon Probus 2008 Club

(2)(4) 10.30am, Clevedon Community Centre, Princes Rd. 01275 874 631

#### Multicultural Friendship Association

(E) 1-3pm, Weston Room, Badger Centre, Wadham Street, Weston. 07587 335 963, www.mfca-wsm.org.uk

#### Lynne Castell Watercolours Art Group

(E) 1-4pm, Greenways Farm, 2 Lyefield Road, Worle. 01934 628 760 or www.lynnecastell.f2s.com

#### Nailsea Shedders Repair Café

(E) 1-4pm, Scout Hut, Hannah More Road, Nailsea. nailseasocialshedders@gmail.com

#### Nailsea Shedders

(E) 1-4pm, Scout Hut, Hannah More Road, Nailsea. nailseasocialshedders@gmail.com

#### Portishead Rotary Club

Memory Café (1)(3) 2.15pm, Jubilee Hall, Slade Rd. 01275 871 197

#### Weston Scrabble Club

(E) 7pm, St Saviour's Church Hall, Locking Rd. 01934 620 948

**Weston-super-Mare and District Family History Society** (4, except Aug and Dec) 7pm, Vintage Church, Hughenden Road, Weston. 01934 418 998

**Catenian Association** (1) 7.15pm, Cadbury House Hotel, Congresbury. For Catholic men. 01275 877 180

#### Rotary Club of Portishead

(E) 7.30pm, Clarence House, High Street. 01275 845 509

#### A1 Camera Club

(E) 7.30pm, St Georges Community Centre, Willow Close. 01934 521 780

#### Hutton Ladies Group

(1) 7.30pm, Village Hall. 01934 623 450

#### Bleadon Photographic Club

(1, 2, 4) 7.30-9.30pm, Bleadon Coronation Hall. 01934 812 573

#### Portishead Quilters

(1)(3) 7.30pm, Redcliffe Hall. 01275 848 467

#### North Somerset Vintage Tractor Club

(1) Redhill Village Club. 01275 474 649

#### Weston Railway Society

(1) Function Room, Conservative Club. 01934 628 289

#### Clevedon Art Club

(2) 7.30pm, Sixth Form Centre, Clevedon School, Valley Road. 01275 879 556

#### Women of Weston Women's Institute

(3) 7.30pm, Vintage Community Church, Hughenden Road, Weston. WeAreWOWWI@gmail.com

#### Weston Archaeological and Natural History Society

(2) 7.30pm, Victoria Methodist Church Hall, Station Rd. 01934 620 785

#### Portishead Townswomen's Guild

(4) 7.30pm, Folk Hall. 01275 847 271

#### Clevedon and District Model Boat Club

(4) 7.30pm, The Salthouse (also sail on the 2nd Sunday of the month at 10am)

#### Nailsea and District Model Railway Club

(E) 7.30pm, Clevedon Craft Centre, off Moor Lane. www.nailsea-district-mrc.co.uk





**Clevedon and District Flower Club** (4) 7.30pm, Community Centre, Princes Rd. 01275 859 797

**Nailsea Miners Rotary Club** (E) 7.45pm, George pub, Backwell. 01275 854 641

**Weston-super-Mare Railway Club** (1) 8pm, Conservative Club function room, Alexandra Parade, Weston. 01934 628 289

**Weston and Mendip Advanced Motorists' Group** (3) 8pm, Village Hall, Crookes Lane, Kewstoke

**Yeo Valley Lions Club** (2) 8pm, Yatton Village Hall. 08458 339 602

**North Somerset Modellers' Society** (2) 8.30pm, Windsor Castle pub, Milton. 01934 417 907

### Wednesdays

**Lynne Castell Oils, Acrylics, Pastels Art Group** (E) 10am-1pm, Greenways Farm, 2 Iyefield Road, Worle. 01934 628 760 or [www.lynnecastell.f2s.com](http://www.lynnecastell.f2s.com)

**Yeo Valley Probus Club** (1)(3) 10.30am, Backwell Bowls Club. 01275 857 769

**Backwell Probus Club** (2)(4) 10.30am, West Backwell Bowling Club. For retired men, to listen to talks on a wide variety of topics. 01275 462 627

**North Somerset Over 50s Club** (4) 11am, Clevedon Community Centre. 01275 842 282

**Woodspring Indoor Bowls Club** (E) noon-2pm (and every Sat 8.30-10.30am) 236 Milton Road, Weston-super-Mare. 07709 682 696

**Gordano Probus Club** (2) 12.30pm, Clarence House, High Street, Portishead. 01275 398 706

**Portishead Probus Club 73** (3) noon-3pm, Clarence House Social Club, High Street. 01275 814 249 / 07715 572 106

**Failand Art Group** (E) 1.30pm, Village Hall, Oxhouse Lane. [Jimpeck1502@gmail.com](mailto:Jimpeck1502@gmail.com)

**Banwell Bridge Club** (E) 1.30pm, Village Hall. 01934 522 405

**Friends of Weston-super-Mare Museum** (3) 1.30pm, Blakehay Café, Wadham Street, Weston. Meetings free to members. Small fee to visitors.

**Woodspring Scrabble Club** (E) 2pm, United Reformed Church, Weston. 01934 815 358

**Nailsea Scrabble Club** (E) 2pm, Mizzymead Recreation Centre. 01275 464 864

**Worle Friendship Club** (E) 2pm, Worle Community Centre, Lawrence Rd. 01934 510 863

**Portbury Over Sixties Club** (1) 2pm, Portbury Village Hall

**Uphill WI** (2) 2.15pm, Victory Hall, Westfield Road, Uphill.

**Backwell Garden Club** (3) 2pm, WI Hall. 01275 855 822

**Portishead Senior Citizens Forum** (3) 2.15pm, Folk Hall. 01275 843 678

**Clevedon Senior Citizens' Forum** (L) 2.30pm, Masonic Hall, Albert Road. 01275 874 296

**Weston Amnesty International** (2) 6.30pm, Worlebury Golf Club, Weston. 01934 419 014

**Weston Bridge Club** (E) 6.45pm (and Fri/Sat 1.45pm), Haywood Village Academy, Whitney Crescent. 01934 647 634 or [ivangerstel@gmail.com](mailto:ivangerstel@gmail.com)



**Weston Sea Cadets** (E) (and Fri), 7pm, Cadet HQ, Sunnyside Rd North. 11 to 18-year-olds.

**Portishead Spiritualist Association** (E) 7.30pm, Brampton Way Playgroup Hall, Brampton Way. 01275 843 744

**Weston Moose Social Evening** (L) 7pm, Ebdon Arms, Wick St Lawrence. Skittles, darts and friendly conversation. 01934 814 042 or [41liiton@tiscali.co.uk](mailto:41liiton@tiscali.co.uk)

**Wrington Vale Rotary Club** (E) 7.30pm, Burrington Inn, Burrington Combe. 01934 844 214

**Clevedon Yeo Rotary Club** (1 and 3) 7.30pm, Walton Park Hotel, Wellington Terrace, Clevedon. 01275 218 987 [www.clevedonyeorotary.org.uk](http://www.clevedonyeorotary.org.uk)

**Nailsea and District Horticultural Society** (2) 7.30pm, United Reformed Church Hall, Stockwood North. £2 for members, £3 for visitors. 01275 855 342

**Nailsea Stamp and Postcard Club** (2) 7.30pm, Mizzymead Recreation Centre. 01275 855 875

**Nailsea and Backwell Townswomen's Guild** (2) 7.30pm, Methodist Hall. 01275 810 579

**Worle WI** (3) 7.30pm, Castle Batch Community Centre, Bishop's Avenue. 01934 511 329

**Portishead Floral Art Society** (3) 7.30pm, Somerset Hall. £5 for visitors. 01275 374 201

**Royal British Legion (Clevedon)** (3) 7.30pm, Community Centre, Prince's Rd 01275 879 816

**Gordano Valley 41 Club** (4) 7.30pm, Royal Inn, Portishead. 01275 871 258

**Moorhens WI** (1) 8pm, Locking Castle Church. [moorhensWI@gmail.com](mailto:moorhensWI@gmail.com)

### Thursdays

**Bleadon Art Group** (E) 10am, Bleadon Village Hall, Coronation Road. 07783 806 031

**Community Coffee Morning** (E) 10am, Clarence Park Baptist Church, Walliscote Road, Weston. 01934 424 550

**Probus Club WSM** (1)(3) 10am, Worlebury Golf Club, Worlebury. 01934 514 857 [www.probusweston.com](http://www.probusweston.com)

**Probus Club of Nailsea** (2) (4) 10am, Mizzymead Social Club. 01275 790 335

**Probus Milton** (2)(4) 10am, Milton Methodist Church. 01934 525 476

**Weston Twins and More** (4) 10am, Kids Hut, Winter Gardens. 01934 528 348

**Civil Service Retirement Fellowship** (1)(3) 10am, Friends Meeting House, High Street, Weston. 01275 858 766

**Copse Coffee drop-in coffee morning** (A) 10.30am, Copse Rd Chapel, Seavale Rd, Clevedon. 01275 798 667 / 07873 180 135

**Notable Club** (E) Uphill Scouts Hall. 07749 625 217

**Channel Scrabble Club** (E) 2pm, Friends Meeting House, High Street, Weston-super-Mare. 01934 418 876

**Social duplicate bridge** (E) 2pm, Vintage Community Church Hall, Hughenden Road, Weston-super-Mare. 01934 627 751

**Winscombe Bridge Club** 2pm. 01275 540 604 [www.winbridge.org.uk](http://www.winbridge.org.uk)

**Uphill Friendship Club** (over 50s) (E) 2.15pm, Victory Hall, Uphill. 01934 429 678

**Weston and District National Trust Association** (2)(and fourth Fri) 2.15pm, Corpus Christi Church Hall, Weston. 01934 633 593

**Yatton Knitting Club** (E) 5.45pm, Yatton Library. All abilities welcome. Free tea or coffee. 01934 426 100

**Craft and sewing sessions** (E) 6-9pm, Weston-super-Mare. Contact 01934 643 261 or [emmabilly25@gmail.com](mailto:emmabilly25@gmail.com)

**Vintage Hornby Railway Collectors** (4) 6pm, Scout Hut, Tatterdown Rd Weston. 01934 413 053

**Loves Book Club** (1) 6.30pm, Loves Cafe, 9 West Street. 01934 645 672

**Vegetarian Cookery Club** (A) 6.45pm, Church Hall, 500 Locking Rd, Worle. 01934 628 860

**Uphill Brushstrokes** (2) 7pm, Uphill Village Hall. All abilities. 01934 820 105

**Weston Woodturning Circle** (3) 7pm, Weston Football Club, Winterstoke Rd. 01934 510 862

**Weston Chess Club** (E) 7.30pm, Weston-super-Mare Conservative Club, 24-26 Alexandra Parade. 01934 643 171

**Portishead Camera Club** (E, Sept-May) 7.30pm, Redcliffe Bay Hall, Newhaven Road. 01275 848 895 [www.portisheadcameraclub.co.uk](http://www.portisheadcameraclub.co.uk)

**Weston-super-Mare Horticultural Society** (2) 7.30pm, St Peter's Church Hall, Baytree Rd.

**Banwell WI** (2) 7.30pm, Village Hall, Banwell. Visitors welcome. 01934 253 761

**Hewish and District WI** (3) 7.30pm, Hewish and Puxton Village Hall, Maysgreen Lane. 01934 249 352

**Avon Wildlife Trust Long Ashton** (3) 7.30pm, Jubilee Pavilion, Keedwell Hill. 01275 392 690



**North Somerset Rural Business Forum** (3) 7.30pm, Mendip Spring Golf Club. £7.50 for non members. 01531 820 307

**Royal British Legion (Nailsea)** (3) 7.30pm, Grove Sports Club. 01275 856 879

**Bleadon Sugarcraft Club** (4) 7.30pm, Bleadon Coronation Hall, Visitors £3.50. 07535 915 582

**Bristol Sailors Meeting** (4) 8pm, British Legion Hall, Long Ashton.

### Fridays

**Good Companions Senior Citizens Club** (E) 9am, Somerset Hall, Portishead. 01275 848 059

**Gadget Club** (1) 10-11am, Town Hall library, Weston-super-Mare. 01934 426 010

**Lynne Castell Calligraphy Group** (A) 10am-1pm, a Weston venue. 01934 628 760 or [www.lynnecastell.f2s.com](http://www.lynnecastell.f2s.com)

**Mead Vale Friendship Club** (over 50s) (E) 2pm, Community Hall, Worle. 01934 510 672

**Portishead Folk Hall Senior Citizens Club** (E) 2pm, Folk Hall, High Street, Portishead. £1, inc refreshments and entertainment. 01275 390 350

**50-plus club** (E) 2-4pm, Castle Batch Community Centre, Bishop Avenue, Worle.

**Scrabble Club** (E) 2.15-5pm, Clevedon Conservative Club. £1 per session. 01275 342 974

**Long Ashton Bowling Club** (E - May-Sept) 6pm, Community Centre, Keedwell Hill. 01275 853 885

**Nailsea Computer Club** (1)(3)(4) 7pm, Southfield Church, Southfield Close, Nailsea. 01275 852 521

**North Somerset Quilters** (3) 7.30pm, WI Hall, Station Rd, Backwell. 01275 463 119

**Portishead Stamp Club** (4) 7.30pm, Friends' Meeting House, St Mary's Rd. Annual convention at Gordano School on 18 August and discussion at Friends' Meeting House on

24 August. New members welcome from Portishead and beyond. [www.portisheadphilatelicsociety.org.uk](http://www.portisheadphilatelicsociety.org.uk)

**Banwell Society of Archaeology** (2) 7.30pm, Banwell Village Hall.

### Saturdays

**Hutton Lace and Craft Group** (2) 9.30am, Village Hall. 01934 822 871

**CREWS Backstage Support** (E) 10am-1pm, The Stables, Princes Rd, Clevedon. 07824 821 814

**Craft and sewing sessions** (E) 10am-1pm and 1-4pm, Weston-super-Mare. Contact 01934 643 261 or [emmabilly25@gmail.com](mailto:emmabilly25@gmail.com)

**Portbury Community Café** (1) 10am, Village Hall. 07971 501 374

**Friends of the Playhouse** 10am, upstairs bar of The Playhouse, High Street, Weston. Regular fundraising coffee mornings.

**Better Nailsea litter picks** (2) 10am-noon, then Community Group meeting noon-2pm, 65, High Street, Nailsea.

**YABEEP Natural Beekeeping Group** (2) 10.30am, Claverham Village Hall, Bishops Rd. [YABEEP@gmail.com](mailto:YABEEP@gmail.com)

**Avon Guild of Spinners, Weavers and Dyers** (2) 10.30am, Bowls Pavilion, Long Ashton Community Centre. 01275 464 526

**Parkinson's UK North West Somerset branch meeting** (2) 10.30am-12.15pm, St Francis Church Hall, Nailsea. 01275 855 524

**Weston-super-Mare & District Family History** (E) 2pm-3.30pm, Weston library, Town Hall, Walliscote Grove Rd.

### Sundays

**Games and other activities group for over 50s** (3) 2-4pm, The Lawnside, Church Lane, Backwell. 01934 888 803

**Worle Lions Quiz** (1) Windsor Castle pub. Entry £2.50 inc food and cash prize. [www.worlelions.co.uk](http://www.worlelions.co.uk) 08458 339 862

# Ensuring a library service for everyone

**Libraries play an important role in the fabric of society – offering a space for people to read, learn, meet, work and socialise.**

If you haven't visited your local library recently, you may be surprised by the services and events on offer.

A selection of libraries are now open for longer, giving you access outside normal staffed hours; there's the mobile library if you live in more rural areas; and there are lots of clubs catering for a wide range of interests.

*Life takes a look...*

## Sunday opening hours doubling at four libraries

A convenient self-service swipe card system is being extended to meet demand.

Extended Access gives library users the opportunity to use certain North Somerset libraries during unstaffed hours, such as earlier in the mornings, evenings or for additional hours at weekends.

It is available at Portishead, Winscombe, Worle and Yatton

libraries and more than 800 people have signed up at Portishead alone.

As a result of this success, Sunday hours at the four libraries have increased.

You can now visit from 8am to 8pm, an increase of six hours on the previous Sunday times.

To use Extended Access you must first attend a short induction session. Visit [www.eventbrite.co.uk](http://www.eventbrite.co.uk) and search by name of library, or pop into the library and ask a member of staff.



For more information visit [www.n-somerset.gov.uk/extendedaccess](http://www.n-somerset.gov.uk/extendedaccess)



## Creative clubs proving popular

Weekly clubs which encourage co-operation and creativity are proving popular with families across North Somerset.

Lego clubs are helping children develop fine motor skills while strengthening their science, technology, engineering and problem-solving skills.

Clubs are held at Yatton, Weston-super-Mare, Pill and Portishead libraries, with the help of enthusiastic volunteers.

One family who attends Lego club at Pill library said: "We love it. It's a great activity to get us out of the house at the weekend when it's raining. It helps us focus, share and stay calm."

New clubs could launch at other libraries if they had more Lego. Any donations of bricks can be dropped off at your local library.





# Hop aboard the mobile library

Hop aboard the mobile library as it brings books to more rural areas of North Somerset.

The mobile library began a new timetable in January following an annual review of the service, taking into account changing demand, operational requirements and customer feedback.

Changes were mostly around different stop times and days of the week.

The vehicle provides a library service to 28 communities

throughout the area across a two-week cycle.

Most stops are fortnightly but busier ones are weekly and some even twice a week.



Long Ashton is the newest location to be added into the service, following the closure of the previous library building in December, and early feedback is

positive.

It visits the community centre, in Keedwell Hill, every Tuesday from 2.30pm to 4.30pm and every Friday from 9.30am to 11.30am.

See North Somerset's mobile library timetable at [www.n-somerset.gov.uk/mobile-library](http://www.n-somerset.gov.uk/mobile-library)

You can keep up-to-date with the mobile library through social media. Visit @NSomLibraries on Twitter or NSLibraries on Facebook.



**Get access to 2.5 million library items**

Library users in North Somerset have access to about 2.5 million items as part of the LibrariesWest partnership.

Your library membership card allows you to borrow, return, renew and reserve books, DVDs, spoken word, music CDs, maps, language materials and more from across the area.

Library members also have access to the 24-hour online services, including the library catalogue, eBooks, eAudio Books and more than 70 eMagazines, including many popular titles.

[www.librarieswest.org.uk](http://www.librarieswest.org.uk)



**Home library service**

Anyone who struggles to get to their local library or use the mobile one because of illness or disability may be eligible for the home library service.

Volunteers visit homes once a month to drop off and pick up items.

To find out more call **01934 426 657**



Volunteers are needed to help run Lego and Code clubs. If you could help, visit [northsomersetlibraryvolunteers.wordpress.com](http://northsomersetlibraryvolunteers.wordpress.com)

For more information about what's on visit [www.n-somerset.gov.uk/libraryevents](http://www.n-somerset.gov.uk/libraryevents)

Code clubs offer more opportunities for children to make games and animations using computer coding languages such as Scratch and Python.

Code clubs currently run at Portishead and Clevedon libraries and it is hoped they could start in some others.



One Code club visitor at Clevedonlibrary said: "It's really cool to make your own mini games."

New Code-a-pillar toys are being used in story time sessions to encourage learning through play.

Libraries also have sets of Micro:bits available for loan, tiny programmable computers with simple step-by-step projects.

# Vegan movement taking Weston-super-Mare by storm

Plant-based diets are gaining popularity as more people choose to go vegan for health, animal welfare or environmental reasons – and businesses in Weston-super-Mare are embracing the food boom.

For most people, fish and chips is a staple treat when visiting a seaside town but in Weston you can now swap your battered fish for battered smoked sweet potatoes.

*Life* takes a look at some of the businesses embracing this vegan lifestyle...

## Cove West

Vegan fish and chips and milkshakes can be enjoyed while you stroll along Weston's promenade.

Heath Hardy has owned Cove West, on Marine Parade, for



five years and said introducing a vegan menu has been more popular than he ever imagined.

He said: "We decided to add a vegan option as it's a growing sector and more and more people are looking for plant-based options.

"We felt it important to offer customers that memory of their childhood – to be able to visit a fish and chip shop by the sea and know that their product is 100 per cent vegan.

"I've actually had a gentleman in tears as he hadn't eaten fish and chips for 35 years.

"Bringing back that memory was clearly a poignant moment for him, and that's why we do it."

## Bijou B&B

The vegan movement is more than just food and a new B&B in Weston-super-Mare is taking it to the next level.

Bijou B&B opened in Clevedon Road in 2018 and owner Chantal Denny has made veganism integral to the business.

Chantal said: "We offer a vegan full breakfast every day, the same as any other B&B, but we've taken it a step further and replaced any animal product with natural materials.

"This includes the furniture, fixtures, fittings, linens – everything.

"We recycled as much as we could when we first renovated the building. We've used recycled plastic in our underlay, organic paint, and our pillows and duvets are filled with recycled plastic.

"We're not a hippy fest – our building is cool and contemporary.

"The vegan lifestyle is more mainstream now and I'm very excited that I've been able to bring my addition to my hometown."





## Loves Cafe

Popular Grove Village eatery Loves Café began offering only vegan-based cooking with vegetarian options a year ago.

Owner Anna Southwell said: "I'm a vegetarian and most of my staff and customers were vegan and vegetarian.

"I decided to focus on what I do best, and that's vegan and vegetarian cooking, and we're busier than ever.

"Often vegan customers are treated as an afterthought. To go to a restaurant where they are spoilt for choice and have a menu that's designed for them is a real luxury.

"There's a movement to eat more kindly, with your body and the environment, and we want to be part of it."

## eat:Vegan

Thousands of people enjoyed Weston's first vegan food festival in January.

eat:Vegan, part of the eat:Festivals company, featured more than 70 food and drink producers, including treats such as chocolate, cakes and wine.

Organiser Bev Milner-Simonds said: "Weston has a great vegan scene, including vegan pop-up music events, and we wanted to compliment this increasingly-popular life choice.

## The Curious Pumpkin

Weston-super-Mare's first vegan only café, The Curious Pumpkin, arrived at the end of 2018.

The Meadow Street cafe is run by mother and daughter duo Anne and Beth Miller.

Anne said: "My daughter was vegan for a few years and I saw for myself how much brighter and healthier she was, and it didn't take long for me to join her.

"We talked about opening a vegan cafe for a while and decided to bite the bullet last year. I've been blown away by how popular it's been.

"I'm North Somerset born-and-bred and it's wonderful to see the number of establishments now offering vegan menus.

"Weston is definitely embracing the vegan way of life."



"This event cut through the marketing smog and allowed visitors to talk to vegan producers and find out what's really involved.

"Visitors said how much they enjoyed trying new types of foods, asking questions around how to cut down on meat in their diet and some came away looking at implementing a more varied plant-based diet."



**Cove West:**  
 [CoveRestaurant](#)

**Loves Café:**  
[www.lovesweston.co.uk](http://www.lovesweston.co.uk)

**Bijou B&B:**  
[www.bijoubandb.co.uk](http://www.bijoubandb.co.uk)

**Eat:Festivals:**  
[www.eatfestivals.org](http://www.eatfestivals.org)

**The Curious Pumpkin:**  
 [thecuriouspumpkin](#)



# DO YOU KNOW SOMEONE WHO HAS HAD A STROKE?

Are they receiving the daily therapy they require to speed their recovery?

STROKE TODAY announce **LASER**® which stands for and delivers LIFE AFTER STROKE EFFECTIVE REHABILITATION

Continuing affordable care both at home and in the community.

Available right now. Contact your local leisure centre or **STROKE TODAY** for further details.

SCOTCH HORN  
**LEISURE CENTRE**

☎ 01275 856 965 *ASK FOR RECEPTION*

HUTTON MOOR  
**LEISURE CENTRE**

☎ 01934 425 900 *ASK FOR RECEPTION*

**DROP IN DAY**

8th MARCH

12.00 - 2.00pm

Working in partnership with your local authority



**STROKE TODAY**

PROUDLY PROVIDING

**LASER**®  
LIFE AFTER STROKE REHABILITATION

Telephone 0117 332 3019

[www.stroke.today/northsomerset](http://www.stroke.today/northsomerset)

CityPoint, Temple Gate, BRISTOL BS1 6PL



Scan me



# Stub it out this No Smoking Day



Thousands of smokers decide to stop smoking and begin a healthier lifestyle each year – so could you be one of them?

No Smoking Day, on Wednesday 13 March, could be the perfect time to try and stub it out for good.

As well as this national incentive, Smokefree North Somerset has helped thousands of local people to stop smoking successfully.

You are four times more likely to stop with the organisation's help because it uses a combination of behavioural support and stop smoking aids.

Most people make several attempts to stop before they quit for good, so give it another try if you haven't succeeded before.



2019 could be the year that you go smokefree, joining thousands of others who are already feeling the benefit.



Trained stop smoking advisers are available in most GP surgeries and pharmacies.

Call your local GP surgery or pharmacy to find out if they offer support.

Or call Smokefree North Somerset on 01275 546 744 or visit

[www.smokefreenorthsomerset.co.uk](http://www.smokefreenorthsomerset.co.uk)  
[www.n-somerset.gov.uk/smoking](http://www.n-somerset.gov.uk/smoking)





# Community arts studio opens on Weston's High Street

**Artistic events and workshops are coming to Weston-super-Mare after a new community arts studio opened on the High Street.**

Terrestrial, a Weston-based arts organisation, has opened in the unit previously occupied by Saltrock.

It is open to local people to meet, work, run events and develop new skills.

As well as providing free creative workspace for Weston's artists, the

space will host a series of events and workshops including:

- music
- drama
- photography
- guerrilla marketing
- gaming and coding
- dancing.

It opened in January and director Tom Spencer said: "Weston is full of creative people.

"There are hundreds of current arts students and recent graduates of University Centre Weston, along

with scores of people who spend their evenings after work writing or painting.

"There are innovative tattoo artists, musicians, app-designers, you name it... But there's almost nowhere for these folks to come together.

*"We wanted to find a space for creatives to work, to make a mess, to learn new skills and to collaborate.*

## Photographic exhibition

**Photographs showcasing the history of Weston-super-Mare can now be seen in a new exhibition on the Grand Pier.**

The exhibition, in Tiffany's restaurant, uses images which feature in a new book, Weston-super-Mare – The Town and its Seaside Heritage.

The exhibition and book are part of the Great Weston Heritage Action Zone initiative, an Historic England scheme to boost regeneration and encourage people's understanding of the historic town.

The book tells the story of Weston-super-Mare as a popular destination for holidaymakers for 200 years.

It also outlines the challenges facing Weston today and how its rich heritage can contribute to the town's future success.



How its heritage can help its future



Author Allan Brodie

“We’ll be working with the council and Sovereign Centre to organise events in the town centre that bring people together, support local businesses and enliven the area.”

Customer behaviour is changing and High Street shoppers are looking for more of a visitor experience than purely a retail one.

Although the unit is on the High Street, it forms part of the Sovereign Centre, which North Somerset Council bought in 2018.

The council expects to generate £1m a year from the site, which will be put back into vital local services.

It forms part of Weston town centre’s regeneration programme, which is delivering improvements to key sites within the town and encouraging inward investment.



Local people helped set up the new space.  
Photo courtesy of Paul Blakemore

Find out more about Terrestrial’s work in Weston-super-Mare at [www.terrestrial.org.uk](http://www.terrestrial.org.uk)



# n explores Weston’s history



## Weston-super-Mare – The Town and its Seaside Heritage

by Allan Brodie, Johanna Roethe and Kate Hudson-McAulay, is published this month by Historic England, priced £14.99.

It is available to buy from Weston Museum in Burlington Street, the Visitor Information Centre on Marine Parade, as well as general bookshops and online retailers.

The Grand Pier exhibition is open every day from 10am-4pm until Thursday 20 June.

# Extra investment



## Roads in North Somerset are set to benefit from an additional £1.8m investment this year.

This money comes from the Department for Transport's (DfT) Local Transport Capital Fund and is over double the amount North Somerset Council received last year.

The funding can only be spent on highways maintenance schemes, such as repairing potholes, bridges and structures as well as other minor highway works.

Highways officers and councillors are now deciding where this money can be best spent to continue the council's roads investment programme this year.

*Life* spoke to highways asset manager Darren Gilbert to find out how last year's DfT allocation was spent.

Darren said: "Investing in North Somerset's roads is a council priority and our 2019 allocation

from the DfT means we can now put together a programme that will not just maintain but really invest in our highways network.

"Last year's money helped us carry out major highways improvements, such as upgrading the Portbury Hundred (A369) between Portishead and Junction 19 of the M5 in June 2018.

"The improvement scheme included carriageway patching, drainage improvements, improved signage, kerb replacements and refreshed road markings."

Darren added: "The scheme required overnight closures so we took the opportunity to carry out a broad range of works and worked with colleagues from teams across the council to tie-in vegetation clearance and litter clearing at the same time, which kept disruption to a minimum for road users.

"Feedback on social media from Portishead residents was very positive both during and after the works.



Work in progress at Portbury Hundred

# in roads



*“Results from the DfT’s national roads condition survey show that North Somerset has some of the best-condition roads in the UK, demonstrating that our strategic approach to investing in and improving our roads is paying off.”*

“Looking ahead to the 2019/20 highways programme, we are developing plans for some of the key strategic routes across North Somerset, including several improvement works on the A38.”

“With over 1,100km of roads to maintain across the North Somerset network, it’s vital that we prioritise our improvement works to benefit as many road users as possible.”



## Spot a pothole?

A pothole is a sharp-edged hole created by water, weather damage or heavy vehicles.

The council repairs potholes that are 4cm deep and 30cm across in the road, or deeper than 2cm and more than 15cm across on a pavement.

Not all defects are potholes and those that don’t meet intervention levels yet will be closely monitored.

You can report a pothole online at [www.n-somerset.gov.uk/connect](http://www.n-somerset.gov.uk/connect)

## Investing in roads



A ‘whole-life’ proactive approach to improving roads is adopted in North Somerset. Preventative work to extend the life of road surfaces is carried out before more costly repairs are needed.

In recent years, ‘smart gangs’ have been introduced to carry out high quality, urgent repairs on potholes across the district, operating on a ‘fix it once, fix it well’ basis.



# Tell us how you travel for a chance to win prizes

**Have your say on how you travel to work and help shape the future of transport in the region.**

The West of England Travel to Work survey is the largest of its kind in the UK and you could win a prize for entering, such as shopping vouchers or a Fitbit.

It was previously only open to businesses but this year all residents of North Somerset, Bristol, Bath and North East Somerset, and South Gloucestershire can have their say.

The online survey is open from Monday 11 to Sunday 17 March and will take less than five minutes to fill in.

Questions include modes of travel, distances and how satisfied you feel as a commuter.

Findings will be used to attract investment and help target spending on infrastructure in new public transport services.

This infrastructure is needed for the 82,500 new jobs expected to be created in the West of England by 2036.

Last year's survey had more than 18,000 responses and the results were used to help create maps of bus reliability, cycle safety hotspots and research into commuting and wellbeing.



Have your say in the travel survey at [www.travelwest.info/survey](http://www.travelwest.info/survey)

## HOWEVER YOU GET TO WORK...

# travelwest

Tell us how you got to work at [travelwest.info/survey](http://travelwest.info/survey)

Awesome prizes to be won!

travelwest  
[www.travelwest.info](http://www.travelwest.info)



# Could your next car be **electric?**

**Electric vehicles continue to increase in popularity as they prove to be an easy and increasingly practical way of reducing emissions and saving money.**

If you've thought about going electric, now could be the time to make the shift.

Many of the latest models have driving ranges of between 200 and 250 miles as standard, while charging costs can be up to two thirds less than conventional fuel.

New vehicles start at about £20,000 but government grants can help, with up to £3,500 available per vehicle.

However, there is a current wait on order times for more popular longer-range cars, of between six and 12 months.

In the meantime, grants are available to install charging units at home,

meaning you can top up the battery at home for a lower cost.

A more affordable second-hand electric vehicle might be the ideal car for shorter journeys.

North Somerset Council is working with Bath and North East Somerset Council, Bristol City Council and South Gloucestershire Council to encourage the uptake of electric cars, with funding from the Office of Low Emission Vehicles.

The Go Ultra Low Project plans to double the number of charging points in the region and create four rapid charging hubs which will make topping up your battery on the go easier.

Would-be buyers can also get expert advice and even try out an electric vehicle for free for two weeks before committing.



## Funding for businesses to go green

Support is available to businesses across the area to help them go green and encourage electric vehicle use with their staff.

Grants are available to cover 50 per cent of the cost of installing charging points, to give employees the time saving option of charging at work.



## Free trial

Find out more about the support available to go electric – including the opportunity to borrow one for two weeks for no cost other than the electricity – at [www.travelwest.info/GULW](http://www.travelwest.info/GULW) or by emailing [sustainable.travel@n-somerset.gov.uk](mailto:sustainable.travel@n-somerset.gov.uk)

# Building strong communities



**Significant steps are being taken to provide critical infrastructure and build strong communities at Parklands Village on the outskirts of Weston-super-Mare.**

Over the next 10 years up to 3,650 high-quality homes and more than 5,000 new jobs will be created on the former RAF Locking base and surrounding land.

Providing the necessary infrastructure is a key priority for new developments and the council has taken the lead in ensuring it is in place at these sites.

Early phases of housing and employment are already complete and occupied. Work has now started on a new building for Parklands Educate Together Primary School, along with a new access road which will open up much of the rest of the site for development.



**The A371**

These projects will play a vital role in supporting the council's drive to stimulate growth in the area.

In total there will be more than 10,000 employment opportunities and 6,500 new homes within the Weston Villages development area, which also includes the former Weston Airfield – now known as Haywood Village.

These sites are part of the Junction 21 Enterprise Area, close to Junction 21 of the M5, where the council has placed a strong emphasis on delivering jobs and infrastructure alongside housing.

Jenny Ford, North Somerset Council's regeneration manager, said:

*"It's vital that infrastructure is in place to help create strong new communities at Parklands and Haywood and ensure residents have the services and facilities they need."*

## New road to link communities

The North South Link Road will form the main route through Parklands Village – running from the A371 in Locking to the A370 at the West Wick roundabout near Morrisons.

North Somerset Council is responsible for constructing the southern part of the road across land that it and Homes England own.

This part of the road will open up land allocated for up to 1,800 homes and 2,700 jobs, as well as providing access to the new Parklands Educate Together Primary School.

The final northern section of the road will be built by Mead Realisations, the developer of that area.

The council has awarded the £13m contract to deliver its section of the road to Balfour Beatty. Work started at the end of last year for construction access off the A371 Locking Moor Road near the footbridge.

For safety reasons, traffic management measures are in





The first pupils of Parklands Educate Together Primary school at the ground breaking ceremony

place on the A371. These include temporary 40 and 30mph speed limits and temporary traffic signals, and two crossing points to direct pedestrians and cyclists around the works.

These will be replaced by a traffic light-controlled crossing at a new junction with the A371 once work on the southern section of the link road is complete.

The road is programmed to finish in late 2020. However, sections of it will be opened before then to provide access to the new primary school and for Homes England development.

For more information about the Link Road and to keep up-to-date with its progress visit the council's website at: [www.n-somerset.gov.uk/northsouthlink](http://www.n-somerset.gov.uk/northsouthlink)

## Building work under way for new primary school

Building work is under way at the permanent Parklands Educate Together Primary School site – the first of up to three new primary schools planned for Parklands Village.

The school opened in September with the first pupils based at a nearby temporary site.

The permanent school building is due to open during the 2019/20 academic year. It will initially have 420 school places and a pre-school, with capacity to expand to 630 places when required.

The £9m contract to build the school has been awarded to Willmott Dixon by the council and pupils attended a ground-breaking ceremony to mark the start of work.

Nicole Ackland, a teacher at Parklands Educate Together

Primary, said: "Being able to attend the ground-breaking ceremony was a really exciting and important event for our pupils.

"We are looking forward to watching our new school take shape and learning all about how schools are made and how we care for our learning environment.

"In the future we are hoping the children will remember that they were there at the very beginning of the project.

"Educate Together is working hard with the council to ensure that families already at the school in pre-school, reception and year one, and those joining during the current school year and from this September, have a positive experience as the transition between buildings takes place."

# Let's be clear abo

**Plastic pollution can be reduced by recycling as much as possible and avoiding buying plastic in the first place which can't be recycled.**

Knowing what types of plastic are recyclable can be confusing so here are some handy hints to make it easier...

## Kerbside collections

All white, coloured or opaque plastic packaging – such as bottles, pots, tubs and trays – can be recycled in your kerbside box.

Plastic bottle lids can also be recycled.

Black plastic, soft or flexible plastics – such as plastic bags, bubble wrap, cling film, chocolate wrappers or crisp packets – cannot be recycled.

If you're not sure, try the scrunch test. It's recyclable if you can squeeze it and make an indent but it won't scrunch up completely.

Polystyrene isn't accepted either, such as disposable coffee cups, take away food boxes or packing foam.

## Recycling centres

In addition to the plastics you can recycle at the kerbside, you can also recycle most hard plastics at one of North Somerset's three recycling centres.

Hard plastics are rigid and tough – if you press the plastic it will not leave an indent. This includes garden furniture, buckets, boxes and plant pots.

Since launching the hard plastic scheme last April, more than 24 tonnes have been collected, with more and more every month. This plastic would have gone to landfill but instead is being sent to Wessex Recycling in Bridgwater to be turned into pellets and graded for re-selling onto various industries.

### At the recycling centre



Boxes and crates



Garden furniture



Plant pots



Buckets

### You can recycle all these plastics in your box

We recycle all colours of plastic, except black.



Drinks bottles



Milk bottles



Detergent bottles



Shampoo and beauty product bottles



Food pots, tubs, trays



Meat trays



Butter tubs



Yoghurt pots

### No thanks

- ✗ Carrier bags
- ✗ Soft film and wrapping
- ✗ Bubble wrap
- ✗ Pet food pouches
- ✗ Polystyrene
- ✗ Black plastic

### Wash it. Squash it. Sort it.

It takes just 20 seconds to collect a well-sorted box but up to two minutes for one where all items are mixed together.

Separating materials means a faster collection, less congestion, a more reliable service and better use of public money.

[www.n-somerset.gov.uk/recycling](http://www.n-somerset.gov.uk/recycling)

# ut plastic

Questions are often asked about where the recycling goes once it's taken from the kerbside.

This month, *Life* looks at **plastic**...

The plastic and cans are now processed separately

Plastic bales are sent to Biffa's facility in the West Midlands

It is sent to Redcar to be washed and crushed into granules and then sold onto plastic processors

Granules are turned back into plastic items, such as milk bottles

They are fed onto conveyors, where they are mechanically sorted using magnets

Items are tipped into bays at Biffa's transfer station in North Somerset

Mixed plastic and cans collected from the kerbside



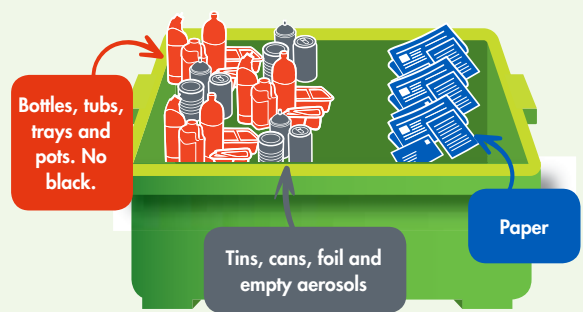
Read the next edition of *Life* to find out about garden waste and composting.

**Either box:**

**BOX 1:**  
Plastic and cans together – paper separate

**BOX 2:**  
Card and cartons together – glass separate

- Spectacles, sunglasses, textiles, shoes and clothes (bag separate)
- Batteries, small electrical appliances, and mobile phones (bag separate)



# Support for breastfeeding mothers

## Vital support is being given to new mums in North Somerset to help them start and continue the breastfeeding journey.

Establishing breastfeeding can be tough but with support, encouragement and guidance, initial problems can be overcome so babies get the best possible start in life.

Seven breastfeeding support groups take place at children's centres across North Somerset, helped by volunteer breastfeeding peer supporters.

These children's centres are currently being accredited through Unicef's Baby Friendly Initiative, which aims to revolutionise healthcare for babies, their mothers and families in the UK as part of a wider global partnership between the World Health Organisation and Unicef.

North Somerset's children's centres were assessed in October and reached level two of the accreditation, and they are now working towards the highest level three accreditation in the autumn.

Family support worker Sharon said: "We run friendly and welcoming peer support drop-ins where mums can get practical and emotional support to help them on their breastfeeding journey."

"You don't need to have a problem with breastfeeding to attend – the groups can just be great for moral support, company with like-minded mums, and to borrow resources and get information."

"Older children are also welcome, with toys and books available to keep them entertained."

Mum Sam Bush said: "I wouldn't still be breastfeeding now without the support and advice I received."

"I would have stopped in the early weeks but I'm still feeding now, at nine months."

Another mum, Ann Dowlan, said: "The support from the group and friends I made gave me the confidence I needed to keep doing what I enjoyed and what was right for me and my daughter."

"I became a peer supporter to give back what I had received by attending the group – a wealth of knowledge, experiences and an all-embracing community."

Another mum, Melonie Hopkins, added: "Going to the support group was the best thing I could have done. The advice not only helped with the practical side of feeding, but also with my confidence."

"I would have stopped feeding in the first few weeks but, thanks to their support, we're still going at 11 months."



Are you a new mum who would like breastfeeding support?  
Visit your local children's centre or  
[www.n-somersetcsd.org.uk/breastfeeding](http://www.n-somersetcsd.org.uk/breastfeeding)  
[www.unicef.org.uk/babyfriendly](http://www.unicef.org.uk/babyfriendly)



# Get vocal, be heard

**Listening to residents' views is an important part of the democratic process and North Somerset Council welcomes ideas to make things better.**

While the council can't act on every suggestion, it listens to feedback and makes changes where possible.

## You said:

Where can I find out about speed restrictions, road closures, planning notices and other council matters?

## We did:

Public notices have been displayed on the council's website – at [www.n-somerset.gov.uk/notices](http://www.n-somerset.gov.uk/notices) – since 2014.

Public and legal notices cover a range of council matters. They are categorised into:

- electoral notices (such as a notice of poll for a parish council vacancy)
- highways and public rights of way (such as a change to speed limit restrictions)
- registration and legal notices (such as applications to approve premises for marriages and civil partnerships)
- others, including planning.

If you want to stay informed about these public and legal notices, then keep a look-out on the website.

You can also find out more about how the council works and how it makes its decisions at [www.n-somerset.gov.uk/decisions](http://www.n-somerset.gov.uk/decisions)

Here you will find links to agendas, minutes of committee and panel meetings, director decisions, and executive member decisions.

You can also read the council constitution.



## Comment on council consultations

Have your say on North Somerset Council's policies by taking part in consultations.

All consultations are listed at [www.n-somerset.gov.uk/consult](http://www.n-somerset.gov.uk/consult)

Sign up online to receive email alerts when new consultations are opened.

If you can't get online at home, posters are put up at the beginning of every month in all North Somerset libraries and council connect points, such as the Castlewood office in Clevedon, to publicise open consultations and how to take part.

# Your views

Send your items to  
Editor, North Somerset Life  
North Somerset Council  
Floor 1, Town Hall  
Weston-super-Mare, BS23 1UJ  
or email [editor@n-somerset.gov.uk](mailto:editor@n-somerset.gov.uk)

@NorthSomersetC

NorthSomersetCouncil

NorthSomersetLife

Items submitted without a valid name and address will not be considered for publication. Please tell us if you do not want your details published. Due to space restrictions letters may be edited.

## Dear Editor,

A series of projects to significantly upgrade the environment of Pier Copse in Clevedon have been undertaken by North Somerset Council thanks to a £4,000 donation from Clevedon Civic Society.

Back in 2010, new seating and a picnic area was installed to mark the 40th anniversary of the Civic Society. This included hard landscaping, stainless steel seats, tables, a sculpture and railings. Planting is still maintained by Civic Society volunteers.

Following closure of the gent's toilets at pavement level, the redundant eyesore became a pleasant seating area with raised planting beds, stone paving and a location plan for visitors. This planting is also maintained by the Civic Society.

The latest project is hoop-topped metal railings to replace the timber railings, and the improvement is dramatic. Views from the park benches are much better and the railings complement the colour scheme.



The layout of the new railings also helps Clevedon Community Gardeners, who can now plant and maintain this important part of the seafront safely.

*Ed McKay, senior natural environment officer, North Somerset Council*

## Dear Editor,

Bees are one of our main pollinators and our future depends on them. Bees emerge in early spring... starving. Dandelions are richer in both pollen and nectar and bloom earlier than most other spring flowers.

We need to ensure that dandelions are not treated as weeds. Their unique pollen prolongs bees' life. If you don't want them all summer, you can always get rid of them later in the spring!

Visit [www.pan-uk.org](http://www.pan-uk.org) for more information.

*Liz Lansley*

North Somerset Life is on Instagram. Tag [#northsomersetlife](https://www.instagram.com/northsomersetlife) to share your photos



@FURBABIESPETSUK



@JAMESEJPHOTOGRAPHY



@MATTWAINWRIGHTIMAGERY



Many topics are covered on Twitter and Facebook and last month these issues were raised...

Star of the week for me – the young lady who dealt with my bus pass query. I had failed to renew and the website was not working. Left a message to which she responded promptly and new pass here within two days.

@NorthSomersetC – anything we can do about neighbours revving the car that they are doing up with excessive exhaust fumes heading towards my daughter's room?

**North Somerset Council:** You can report this on our website as a nuisance at [www.n-somerset.gov.uk/connect](http://www.n-somerset.gov.uk/connect) Just choose the option that says 'report a nuisance or pollution'.



## North Somerset Life

North Somerset Life is published by North Somerset Council.

For advertising and sponsorship opportunities contact Will Jenkins: 01934 426 474 or [will.jenkins@n-somerset.gov.uk](mailto:will.jenkins@n-somerset.gov.uk)

For editorial contact [editor@n-somerset.gov.uk](mailto:editor@n-somerset.gov.uk) or 01275 884 139

The next edition will be delivered from: **Tuesday 7 May 2019**

Your copy should be delivered with your post unless you use Royal Mail's opt-out service to block unaddressed mail.

View back issues at [www.n-somerset.gov.uk/nsl](http://www.n-somerset.gov.uk/nsl)

For free regular emails about news, events and services subscribe at

[www.northsomersetlife.co.uk](http://www.northsomersetlife.co.uk)



Coming next issue:

- Children's centres
- The Food Works<sup>SW</sup> latest

### MARCH 2019

Date	High water		Low water		High water		Low water	
	Time	Height (M)	Time	Height (M)	Time	Height (M)	Time	Height (M)
	AM				PM			
1 Fri	02:14	8.67	08:32	3.14	14:58	8.69	21:09	3.07
2 Sat	03:44	9.09	09:42	2.66	16:21	9.32	22:10	2.47
3 Sun	04:48	9.92	10:36	2.04	17:15	10.12	22:59	1.88
4 Mon	05:36	10.67	11:19	1.55	17:59	10.74	23:38	1.46
5 Tue	06:16	11.16	11:57	1.26	18:36	11.12	-	-
6 Wed	06:51	11.43	00:15	1.24	19:08	11.34	12:33	1.11
7 Thu	07:23	11.59	00:50	1.12	19:37	11.53	13:07	1.02
8 Fri	07:52	11.73	01:22	1.04	20:07	11.68	13:41	0.95
9 Sat	08:22	11.79	01:55	0.99	20:37	11.70	14:15	0.96
10 Sun	08:54	11.66	02:27	1.06	21:08	11.48	14:47	1.11
11 Mon	09:26	11.27	02:57	1.28	21:39	11.02	15:16	1.40
12 Tue	09:58	10.72	03:25	1.59	22:11	10.47	15:43	1.72
13 Wed	10:33	10.13	03:54	1.88	22:47	9.92	16:17	2.02
14 Thu	11:18	9.57	04:38	2.19	23:42	9.38	17:09	2.37
15 Fri	-	-	05:41	2.58	12:31	9.08	18:25	2.79
16 Sat	01:12	9.05	07:20	2.92	14:11	9.11	20:27	2.86
17 Sun	02:49	9.47	09:11	2.52	15:39	9.87	21:45	2.20
18 Mon	04:10	10.44	10:21	1.80	16:50	10.93	22:54	1.47
19 Tue	05:16	11.49	11:27	1.06	17:48	11.89	23:50	0.74
20 Wed	06:09	12.32	-	-	18:38	12.56	12:16	0.42
21 Thu	06:55	12.86	00:37	0.21	19:21	12.95	13:01	0.04
22 Fri	07:38	13.13	01:19	-0.06	20:01	13.08	13:42	-0.07
23 Sat	08:19	13.14	01:59	-0.08	20:41	12.92	14:22	0.08
24 Sun	08:59	12.80	02:38	0.16	21:20	12.39	14:57	0.47
25 Mon	09:38	12.09	03:12	0.62	21:58	11.54	15:29	1.01
26 Tue	10:16	11.11	03:44	1.18	22:35	10.54	16:00	1.59
27 Wed	10:53	10.08	04:15	1.77	23:14	9.57	16:31	2.14
28 Thu	11:36	9.14	04:55	2.35	-	-	17:14	2.70
29 Fri	00:06	8.76	05:49	2.93	12:41	8.42	18:17	3.27
30 Sat	01:31	8.33	07:22	3.40	14:15	8.26	20:33	3.47
31 Sun	04:07	8.68	10:16	2.93	16:47	8.90	22:44	2.77

### APRIL 2019

Date	High water		Low water		High water		Low water	
	Time	Height (M)	Time	Height (M)	Time	Height (M)	Time	Height (M)
	AM				PM			
1 Mon	05:18	9.58	11:08	2.22	17:46	9.81	23:32	2.08
2 Tue	06:07	10.42	11:52	1.65	18:29	10.56	-	-
3 Wed	06:47	11.01	00:12	1.58	19:05	11.05	12:32	1.30
4 Thu	07:22	11.36	00:50	1.28	19:38	11.37	13:08	1.10
5 Fri	07:53	11.59	01:25	1.11	20:08	11.63	13:43	0.98
6 Sat	08:25	11.79	01:59	0.98	20:39	11.84	14:17	0.88
7 Sun	08:57	11.90	02:32	0.91	21:10	11.91	14:51	0.87
8 Mon	09:30	11.82	03:06	0.96	21:44	11.73	15:24	1.01
9 Tue	10:03	11.48	03:37	1.16	22:17	11.31	15:52	1.29
10 Wed	10:40	10.94	04:03	1.45	22:52	10.74	16:20	1.60
11 Thu	11:18	10.30	04:34	1.74	23:34	10.12	16:56	1.92
12 Fri	-	-	05:19	2.07	12:08	9.66	17:51	2.30
13 Sat	00:32	9.53	06:27	2.47	13:22	9.17	09:11	2.72
14 Sun	01:59	9.24	08:10	2.76	14:54	9.23	21:08	2.75
15 Mon	03:32	9.62	09:54	2.37	16:21	9.94	22:28	2.14
16 Tue	04:53	10.51	11:05	1.72	17:33	10.94	23:38	1.46
17 Wed	05:57	11.47	-	-	18:29	11.82	12:10	1.06
18 Thu	06:49	12.18	00:32	0.81	19:16	12.38	12:57	0.55
19 Fri	07:35	12.59	01:16	0.39	19:58	12.68	13:39	0.30
20 Sat	08:16	12.77	01:56	0.22	20:37	12.79	14:18	0.28
21 Sun	08:55	12.75	02:34	0.25	21:15	12.66	14:53	0.44
22 Mon	09:34	12.45	03:08	0.47	21:53	12.21	15:25	0.76
23 Tue	10:12	11.81	03:39	0.84	22:30	11.44	15:54	1.20
24 Wed	10:48	10.91	04:08	1.32	23:05	10.50	16:21	1.69
25 Thu	11:23	9.95	04:40	1.82	23:41	9.60	16:52	2.17
26 Fri	-	-	05:17	2.32	12:02	9.10	17:32	2.65
27 Sat	00:28	8.83	06:08	2.82	12:59	8.42	18:31	3.15
28 Sun	01:45	8.34	07:22	3.27	14:28	8.17	19:58	3.53
29 Mon	03:17	8.50	09:35	3.19	15:54	8.60	22:07	3.12
30 Tue	04:30	9.21	10:34	2.52	16:59	9.40	22:57	2.43

## Tide timetables for Weston-super-Mare

Weather conditions which differ from the average will have an effect on the differences between predicted and actual tide times.

Strong winds can hold the tide in or push the tide out. Air pressure can also cause fluctuations in predicted levels.

Tidal predictions for Weston-super-Mare have been computed by the Proudman Oceanographic Laboratory.

Copyright reserved.

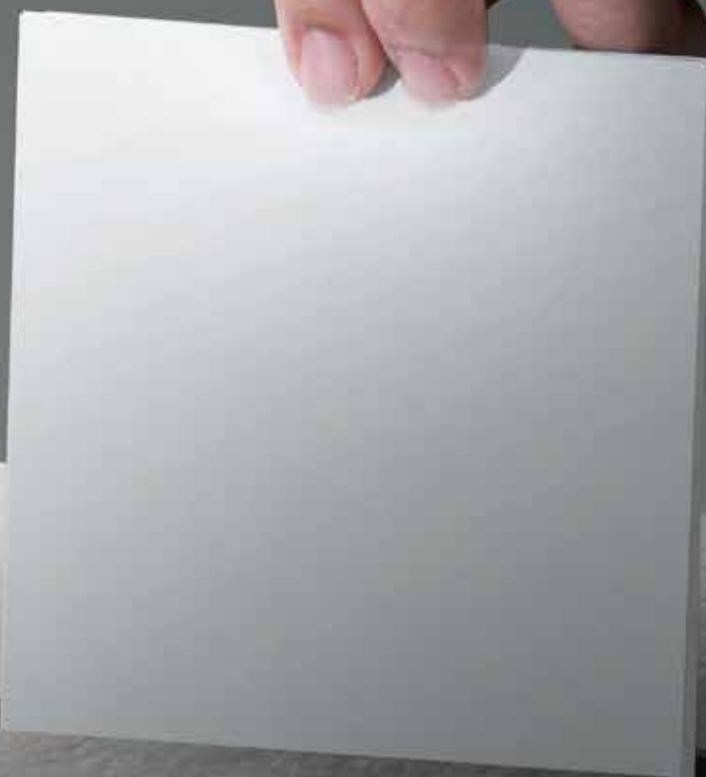
### Tide facts

Approximate high water times at:  
Clevedon: 10 min • Portishead: 18 min  
later than Weston-super-Mare.

[www.n-somerset.gov.uk/tidetimes](http://www.n-somerset.gov.uk/tidetimes)

# Remember to **VOTE**

Polling day for local elections is  
**Thursday 2 May**



Electoral services:

01934 634 909

[electoral.services@n-somerset.gov.uk](mailto:electoral.services@n-somerset.gov.uk)

[www.n-somerset.gov.uk/elections](http://www.n-somerset.gov.uk/elections)

 North  
Somerset  
COUNCIL