

NORTH SOMERSET

LIFE

ISSUE 141 – JANUARY/FEBRUARY 2019

**Could you
become a
foster carer
this year?**





Places Leisure
Part of Places for People

**Gym
Swim
Classes** **£1**

**Offer available
1st to 9th January only!**

Visit website for full terms and conditions
placesleisure.org/north-somerset

Parish Wharf Leisure Centre
01275 848 494

Strode Leisure Centre
01275 879 242



Operated by Places for People Leisure Ltd.
on behalf of North Somerset Council.



**Alan Tubb
Your Local
OvenGleamer**

**Does your Oven, AGA or
Range need Gleaming?**

*"Five Stars: Fabulous results very pleased
Alan has been cleaning oven for 12 years -ALWAYS a
great job very professional and very pleased with results
he is a total star thank you"* Mel Hitchcock

*"Alan did a really good job on both my ovens, he left them
looking like new, left no mess and was a pleasant young
man to have in my home."* Hazel Simpson



Your Cooker is deep cleaned following
our unique mess, odour & fume free
process using organic products within
your home. **Satisfaction Guarantee.**

buywithconfidence.gov.uk

**Then Call OvenGleamers Today On
01823 240060 / 01275 370571**

www.OvenGleamers.com

Ovens | AGAs | Ranges | Hobs | Extractors | BBQs



Image credit: Paul Blakemore

Advertising
and sponsorship
opportunities



Find out how North Somerset Council
can help your business stand out in front
of thousands of residents, tourists and
new customers. Contact Will Jenkins

01934 426 474 • 07584 607 239
will.jenkins@n-somerset.gov.uk
www.n-somerset.gov.uk/advertising



Leader's column

I hope you had a really good Christmas and New Year's Eve and wish you a happy, healthy and successful 2019.

I would also like to congratulate the staff at North Somerset for the wonderful job they have done despite fewer resources and more demands.

They cannot possibly do everything that we all ask of them, or indeed they would wish to do, but when I look across the region it puts it in perspective and shows how well they have done.

In return, I need to thank North Somerset residents for the way they have coped with the effects of reduced resources. It is not easy and often irritating not to get what seems obvious and routine, so thank you on behalf of the council.

However difficult it has been across the country since 2010 when cuts were imposed, the next 12 months hold real hope for local prospects.

We have almost made all the savings asked of us and now look forward to a period of building and investing in services again.

We really do have some excellent businesses in North Somerset and they lead the way in the economy of our communities and also give much welcome advice on opportunities and needs for continued growth.

I have mentioned Bristol Airport (Lulsgate) before but they have just won an award as the best Airport in Europe, in the five million to 10 million passengers category. That is excellent and a good advertisement for the area, well done to everyone who works there.

Other investment in North Somerset continues, which is a positive sign of

growing confidence. There may be difficulties ahead but there are still 65million people living and working in this country.

I really hope that this coming year will eventually see a more settled and happier time than last year, even though there is still so much uncertainty. Politics at all levels, fuelled by years of financial restrictions, has created an atmosphere of worry and anger. Our democratic society seems to be in constant turmoil.

In a diverse and ageing population, different economic and environmental circumstances, differing views, values and ambitions of new generations, change is inevitable and much-needed but it should be seen as positive and not threatening, certainly not hateful.

Given that we have just honoured and remembered those in the First World War, let's get our problems in perspective.

Councillor Nigel Ashton
Leader of North Somerset Council

Contacts

Call us

For all council services, call **01934 888 888** (Mon-Fri, 9am-5pm)

At the prompt, say who you want to talk to if you know their name, or say what you want to talk about in a word or two.

Direct numbers for other popular services:

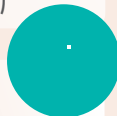
For waste and recycling, road issues, planning and building control: **01934 888 802** (Mon-Fri, 9am-5pm)

For council tax and benefits: **01934 888 144** (Mon-Fri, 9am-5pm)

For social services: **01275 888 801** (Mon-Fri, 8am-6pm)

Do it online – report it, request it or pay for it at: **www.n-somerset.gov.uk/connect**

Or go straight to these popular web pages by adding these shortcuts: **www.n-somerset.gov.uk/myaccount / [planning](http://www.n-somerset.gov.uk/planning) / [schooladmissions](http://www.n-somerset.gov.uk/schooladmissions) / [wastecollections](http://www.n-somerset.gov.uk/wastecollections) / [termdates](http://www.n-somerset.gov.uk/termdates)**



Contents



- 4** News update
- 10** Could fostering be your New Year's resolution?
- 12** Night Assessment Centre for homeless people opens
- 14** Get fit for New Year
- 20** Making Weston safe and enjoyable at night
- 24** Walk around Portishead
- 30** Creative hub to double in size
- 33** Building work starts on innovative food centre
- 36** Climate change crisis
- 40** Preserving our heritage
- 43** Shared Lives scheme needs new carers
- 47** Contact details

North Somerset Council does not endorse or recommend any commercial products or services advertising in *Life* magazine.

This publication is available in large print, Braille or audio formats on request. Help is also available for people who require council information in languages other than English.

Portishead hall's future is secured

The future of a popular community hall in Portishead has been secured.

North Somerset Council has transferred the lease for Avon Way Hall to Vintage Church, which will continue to operate it as a community facility.

It is well used by many groups, including dance, baby groups, exercise classes and martial arts.

Chris James, the leader of the Vintage Church, said: "We are delighted to have taken over the running of Avon Way Hall and our desire is that it remains a community space for Portishead.

"We are working hard on retaining all of our existing bookings and look forward to new users being welcomed to use the hall."



Avon Way Hall is on the first floor of a building above retail units in Avon Way. It has off-street parking and disabled access.

Vintage Church was chosen to take over the building following a public consultation and formal expressions of interest from local organisations.

Community groups or individuals wanting to book the hall can email halls@vintagechurch.co.uk or call Aaron Rath on 07413 456 464



ADVERTISEMENT

Shaw care homes
wellness • happiness • kindness

Sycamore Lodge Nursing Home

Lodge Lane, Nailsea,
North Somerset
BS48 1LX

Home Manager:
Caroline Carter

Call:
01275 858 000

Email:
SycamoreLodge.Manager@Shaw.co.uk

shawhealthcare
 @shawhealthcare
 www.shaw.co.uk

Inspected and rated
Good
Care Quality Commission

Respite & Long Term Care Options

We offer a complete pathway of dementia care, and now also have a new 18 bedded general nursing service on site. All with a dedicated caring staff team, creating a homely atmosphere for everyone.

- Nursing Dementia Care • General Nursing Care
- Day Care • Residential Dementia Care

Planning for North Somerset's future transport

A series of major consultations on plans for housing, employment, and transport growth in North Somerset over the next two decades is now looking at how you want to move around the region.

The draft Joint Local Transport Plan (JLTP) proposes the West of England's transport priorities and policies to 2036.

As well as looking for feedback and comments the consultation, which is open until Sunday 17 February, wants to know the areas where you would invest to make changes. The results will help

shape how transport schemes are prioritised in the coming years.



The JLTP addresses existing and expected challenges, including planned housing and employment growth, and looks at improving connections for people and businesses across all transport types.

This is the fourth plan developed by North Somerset, Bristol, Bath and North East Somerset, and South Gloucestershire councils, and the latest version also includes the West of England Combined Authority.

It sets out where to focus resources and what infrastructure improvements are needed to meet ambitions.

Options to support sustainable and greener travel are also included, such as cycling, walking, bus, rail, and electric and autonomous vehicles.

Suggestions include:

- reopening a nationally significant railway line between Portishead and Bristol to improve transport links in the region
- continuing to build sections of the North Somerset Coastal Towns Cycle Route to link Brean, Weston, Clevedon, Portishead and Bristol
- improving public transport within Weston-super-Mare town centre with public realm alterations, a new transport hub and a reduction in the dominance of traffic, to enhance links for other road users
- improved infrastructure for areas in North Somerset earmarked as possible sites for future development, such as a link to bypass Banwell
- an on-going commitment to highway maintenance, with North Somerset already in the top ten per cent of all local authorities in the country for A roads and in the top five authorities for unclassified roads (2017 data).

Ever wondered what your neighbourhood looked like 200 years ago?

An online map system is now available for residents to discover the changes to their neighbourhood over the last few hundred years.

Know Your Place is a free historical online map system that allows users to compare periods of history.

North Somerset Council has digitised and transcribed hundreds of maps and documents, working

with Historic England, the Great Weston Heritage Action Zone and local community groups.

The council is asking for local history enthusiasts to help build a bigger online picture. If you have pictures, or stories of different areas in North Somerset, visit the website to load up your gems and help develop a fuller picture of the area's past.

Visit www.kypwest.org.uk and click on the North Somerset link



Consultation on the draft Joint Local Transport Plan runs until Sunday 17 February.

For more information and to comment visit www.travelwest.info/projects/joint-local-transport-plan



New mobile library launches in Long Ashton

A twice-weekly mobile library is driving into Long Ashton this month.

The mobile library will visit the car park at Long Ashton Community Centre in Keedwell Hill every Tuesday afternoon from 2.30-4.30pm and every Friday morning from 9.30-11.30am, from Tuesday 8 January.

Pop up events, such as children's story times and rhyme times, will then start in the spring at venues around the village.

The mobile library is being introduced following the closure of the current library building in Lovelinch Gardens.

North Somerset Council has closed the library as part of £260,000 savings to the library service over the next two years.



However, library members can borrow and return items to any library in the LibrariesWest area.

Reservations ordered online or on-board the mobile library can be collected for free from any North Somerset library.

Housebound residents in Long Ashton who cannot use the mobile library or travel to another one can sign up for the home library service. Call **01934 426 657**



ADVERTISEMENT



The Russets Care Home

"It's a privilege to work with the older generation. They give me back more than I could ever give them."

Sally O'Doherty, Activities Coordinator

Getting to know you

At The Russets you'll find there's something going on here 365 days a year. From family events, group activities and even visits from the local primary school. And whatever inspires your loved one, expert staff like Sally make sure they're living life to the full.

Call to book a tour or simply find out more.

01934 825 764

carehomes@stmonicastrust.org.uk

The Russets, specialist dementia care home in Sandford, North Somerset.



St Monica Trust

www.stmonicastrust.org.uk

Registered Charity 202151



Don't miss the primary school deadline

If your child is due to start reception year in September then there are just a few weeks left to apply for primary school places.

The closing date to apply is Tuesday 15 January for children born between 1 September 2014 and 31 August 2015.

Parents of any child now in their last year of infant school who are due to transfer to a junior school will also need to apply by this date.

Parents can name up to three preferences, for schools both within and outside North Somerset.

To ensure you are offered one of your preferred schools, don't miss the application deadline.

Apply for a school place online at www.n-somerset.gov.uk/admissions by Tuesday 15 January



South Parade set for a facelift

South Parade and Knightstone Road in Weston-super-Mare are to receive a facelift with work starting this month.

A new crossing point will be installed near Weston College's Knightstone campus, pavements will be widened and roads realigned.

This is to make the area safer and more attractive for pedestrians and motorists and encourage more footfall to the town centre.

There may be lane closures, narrow lanes, traffic lights and diversions in place, but most of the resurfacing will take place during twilight and night time.

Work is expected to last until April.

Updates and news about road closures will be published on the council's social media feeds, or visit www.n-somerset.gov.uk/roads

Memorial day to mark horrific impact of genocide

The horrific impact of the many genocides around the world will be remembered this month.

Holocaust Memorial Day takes place on Sunday 27 January so people can come together to pledge to put an end to such oppression and suffering.

This year's theme is Torn from Home, encouraging people to reflect on how the enforced loss of

a safe place to call 'home' is part of the trauma faced by anyone experiencing persecution and genocide.

Local events and activities are being planned for North Somerset. These will be publicised nearer the time in the local press, the council's social media feeds, and in local libraries.

Books relating to Holocaust Memorial Day will also be available in local libraries.



Are you a member of a community group and would you like to organise some activities to mark Holocaust Memorial Day? If so, contact Anthony Rylands on **01934 634 989** or equality@n-somerset.gov.uk www.hmd.org.uk



Help bring the joy of gardening to care homes

Green-fingered people with a passion for horticulture are needed to help work with older people in North Somerset.

Growing Support social and therapeutic horticulture workshops connect participants to their gardens and get them involved in a social group, which in turn

helps reduce social isolation and loneliness.

They are organised by Bristol-based charity Alive, which works to enrich the lives of older people in care.

The charity has just received funding to run these sessions in North Somerset and is now looking for volunteers to get involved.

Volunteers who can spare two hours a fortnight will work alongside trained facilitators to help care home residents access all the benefits of taking part in fun activities, whenever possible, outside in the garden.

A Winter Alive – Growing Support induction is taking place at The Create Centre in Bristol, from 10am-12.30pm on Tuesday 5 February, and 5.15-7.45pm on Wednesday 6 February.



To book a place or for more information visit www.aliveactivities.org, email

sarahm@aliveactivities.org or call 0117 377 4756



ADVERTISEMENT



Burns Night

Saturday 19th January 2019

4 Course Meal with 10 Piece Shirley Pipe Band and Dancing to Resident DJ & Disco

£35 per person

Add an overnight stay with breakfast for £165 per two people sharing

DoubleTree by Hilton Cadbury House, Congresbury, BS49 5AD
01934 834 343 (Option 1) | info@cadburyhouse.com | www.cadburyhotelbristol.co.uk



TROPICANA

R&B king brings slick sounds to Tropicana

Slick and smooth sounds will be grooving through Weston-super-Mare soon when R&B king Trevor Nelson hits the decks.

Trevor Nelson is bringing classic soul and R&B to the Tropicana, in Marine Parade, on Friday 25 January.

The multi-award winning DJ is the pioneer of the UK urban scene and has a career spanning decades.

Next month, electronic and dub band Dreadzone are also appearing.

Dreadzone are described as one of the most energetic and powerful live bands to emerge from the post-rave scene.

See them at the Tropicana on Friday 15 February.

Buy tickets online and see what else is on at the Tropicana at www.tropicana-weston.co.uk



Proud to Care bonus scheme starts

The vital work care workers do is being celebrated through a new bonus scheme announced by North Somerset Council.

Staff who work for one of the council's strategic care providers will receive a bonus payment after every six months of working for their employer.

The bonus will be worth one week of their average weekly pay, as calculated during the six months. Over 300 direct care staff are set to benefit from the scheme which recognises the important role care workers play in helping some of North Somerset's most vulnerable residents.

Turn to **page 42** to find out more about the scheme, including which care providers will be paying the Proud to Care bonus.

www.n-somerset.gov.uk/proudtocare



Demolition of police station begins

The demolition of the former police station in Weston-super-Mare has begun.

North Somerset Council is demolishing the station as part of its plans for Walliscote Place.

In its place will be a contemporary building, including modern homes.

The demolition is expected to be finished by February.

For more information visit www.n-somerset.gov.uk/roads or follow the council's social media feeds.



Could **fostering** be your New Year's resolution?

Could you take up a new challenge and make fostering your New Year's resolution?

People from across North Somerset are needed to make a real difference in their community and help look after local children.

Fostering can be demanding but is hugely rewarding and means so much to children who are unable to live with their own families for a variety of reasons.

Richard, a North Somerset foster carer, spoke to *Life* about what fostering is really like.

Richard was only 25 when he and his partner Sam decided to become foster carers.

Since then they have had a number of placements, several challenges and many more good memories and successes.

Richard said: "I suppose 'why foster?' is the most obvious question and one which is probably the easiest to answer.

"We had a spare bedroom, wanted to give something back and felt we had the skills to nurture a child to fulfil their potential."

Richard acknowledged that life as a foster carer has its challenges.

He said: "Being a carer is hard work. Having a child who isn't your own is a new challenge as you have to accept that there are very different rules between a child in care and your own flesh and blood.

"The hardest thing is being disappointed when a child does not share our ambition and desire for their future.

"Not every child wants to be helped or supported and at times it feels like you end up having a long-term tenant – but with you as the cleaner, the cook, the taxi and the carer.

"The feeling of being uncomfortable in your own home isn't a nice one and at times, due to wanting different things, a placement doesn't work. Social workers work with you well in these situations, though.

"Every child is different, every placement is different and you need to be clear with yourself what you want to achieve and can offer."

Richard added that the rewards are also tremendous:

"The children we've cared for are some of the most amazing people I've ever met.

"One came to us at 12-years-old, a smoker, not at mainstream school, no routine and was associating with bad influences where the use of drugs was deemed okay.

"I'm so proud to say through hard work, our relationship with him, and his desire and determination to change he is now a non-smoking, healthy footballer, thriving in a team, with a brilliant routine.

"He attends secondary school where he is over-achieving and is an absolute pleasure to have as part of our family.

"This child clearly needed the opportunity to develop; by being placed in foster care with us he was given the chance he clearly needed."






And his final advice for anyone considering becoming a foster carer?

“Be prepared for your life to change and finally accept that yours and your family’s life will never be the same again – for the good and the bad.”

Read Richard’s full story at www.n-somerset.gov.uk/fostering



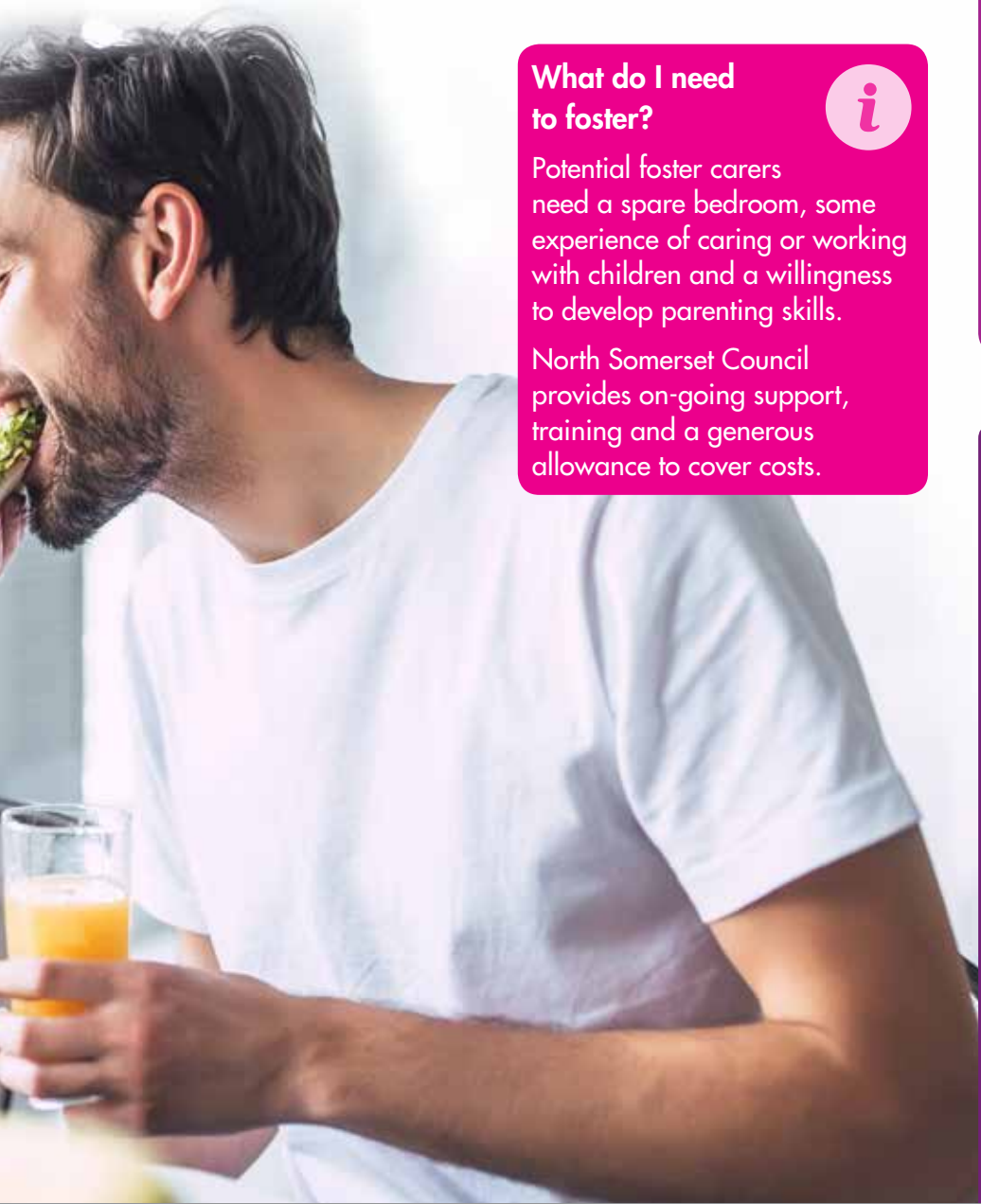
Did you know? 


There are about 230 children needing foster care in North Somerset.

North Somerset Council doesn’t have enough foster carers and some children must be placed in expensive, private placements away from their home, schools and family.

A variety of schemes are available if a potential carer can’t commit to full-time fostering.


These include Supported Lodgings, a bridge to independence for young people in care aged 16 and over.



What do I need to foster? 

Potential foster carers need a spare bedroom, some experience of caring or working with children and a willingness to develop parenting skills.

North Somerset Council provides on-going support, training and a generous allowance to cover costs.


Could you foster? 


Call **01275 888 999** for more information.

The team is happy to chat to anyone who is interested. If now is not the right time, it might be in the future.

Find out more and have an informal chat with social workers and foster carers at the next open evening, from 6.30-8.30pm on Wednesday 16 January at the new Costa Coffee in Oxford Street, Weston-super-Mare.

www.n-somerset.gov.uk/fostering

 [fostering northsomerset](https://www.facebook.com/fosteringnorthsomerset)

 [fosteringNS](https://twitter.com/fosteringNS)

Hundreds of households saved from homelessness each year

Support workers
Lisa and Jamie



More than 500 households are saved from homelessness every year in North Somerset thanks to on-going and wide-ranging support.

People can face homelessness for a variety of complex reasons so North Somerset Council's housing team supports them in a number of ways.

This might include:

- resolving benefit problems
- negotiating with family and friends
- providing tenancy support for clients struggling with their tenancy

- mediation between landlords and tenants
- working closely with other agencies and departments, such as domestic abuse services, mental health teams, social care teams and more.

As a result of this work, a total of 551 households were successfully prevented from becoming homeless during 2017/18.

As well as this, 316 households were provided with temporary accommodation and 485 households were helped into long-term housing, either as a way of preventing their homelessness or a move on from temporary accommodation.

Night Assessment Centre opens

A new night centre has opened in Weston-super-Mare to provide a warm bed for up to 10 rough sleepers each night.

Weston Night Assessment Centre opened in November at Somewhere To Go, in the Boulevard.

It is the result of 15 organisations working together, led by local churches and charities, and supported by Weston Town Council and North Somerset Council.

The space offers a safe place for homeless people to stay overnight, have a shower, wash their clothes, store belongings and have a basic breakfast the following day.

In the morning, further assessments and referrals are made to other agencies, such as the council.

It is not a drop-in shelter – those wanting to use the centre will need to be referred and assessed by trained outreach support workers.



Members of the steering group who helped set up the Night Assessment Centre



Barry Edwards and Garry Hoare, who helped set up the centre

The centre has already made a positive impact to people's lives.

One young couple who had previously lost their accommodation said: "This centre has literally saved our lives."

"We didn't know where to turn next and were getting ill on the street. This has made us look to the future with hope."

Another young man who lost his accommodation through an unfortunate series of events is also now receiving help.

He said: "I didn't know I could get help. I thought I'd messed up and that was that."

Project lead Barry Edwards said: "The Night Assessment Centre is more than just a bed for the night. It is a place where people can access support and other services."

The centre is run by trained staff and volunteers who can also signpost rough sleepers to other support available, such as housing, addiction or mental health services.

It is also working jointly with North Somerset Council to provide the emergency cold weather provision during times of particularly extreme weather.

Rough sleepers

The council's homeless prevention team works closely with a range of partners to help rough sleepers access accommodation and support.

Homeless charity St Mungo's is commissioned by the council to provide outreach support to rough sleepers, alongside the local YMCA.

This outreach team finds and talks to rough sleepers to help move them off the streets and into suitable accommodation by referring to other services such as the homeless prevention team.

Trust is gradually built up to enable people to find routes out of homelessness and towards recovery.

What to do if you spot a rough sleeper

If you are concerned about a rough sleeper, you can contact the national rough sleeping helpline StreetLink.

You will be asked for the specific location, the time you saw them and any information to help identify them.

Details are then passed onto the local council or outreach service so they can find the person and offer support.

Call StreetLink on **0300 500 0914** or visit www.streetlink.org.uk

Funding

Officers from North Somerset's housing team have asked central government for funding to help rough sleepers, through the Rapid Rehousing Pathway and the Rough Sleeper Initiative schemes.

This includes ideas for initiatives which will help rough sleepers during cold weather.

It is hoped the council will find out if it's successful this month.

Other ways to help

Landlords who would consider letting their property to one of the many households the council helps each year, can contact **01934 426 483** or lettingsteam@n-somerset.gov.uk to discuss incentives and support.

To make a donation to Somewhere to Go or find out more about their work visit www.somewheretogo.org.uk

The Night Assessment Centre relies on volunteers. If you're interested in helping, email westonnightassessmentcentre@gmail.com

 [WestonNightAssessmentCentre](https://www.facebook.com/WestonNightAssessmentCentre)

Have a healthy

New year is the perfect time for you to make a new start and prioritise your health and wellbeing.

There are plenty of opportunities in North Somerset to get active, lose weight, learn a new skill or join a new club.

Exercise can be beneficial for both the body and mind but you don't need to don the Lycra in a gym – just a swift 10 minute walk around the block at lunchtime can clear your head for the rest of the day.



How much physical activity do we need?

Adults need two types of physical activity each week to stay healthy – aerobic and strength exercises.

How much you need depends on your age. For adults aged 19-64:

- At least 150 minutes of moderate activity a week, such as cycling, brisk walking or water aerobics.
- If your activity is vigorous, when you are breathing fast and have difficulty talking, this can be reduced to 75 minutes.
- Mix it up – try for 30 minutes a day over five days to reach the recommended 150 minutes. Bouts of 10 minutes at a time provide benefits, and means you avoid sitting for long periods of time.
- As well as this, try to do strength exercises that work all major muscle groups on two or more days a week.

Dr Andrew Burnett, North Somerset Council's Interim Director of Public Health, said:

"Being more physically active in everyday life reduces the risk of disability and many long-term conditions no matter how old you are or your state of health. Walking more, using the stairs and simple balance exercises will all help. Start small and build up gradually."

For more hints and tips, and advice for other age groups, visit www.nhs.uk/live-well/exercise



This girl can

Women are getting inspired to take part in exercise by Sport England's new This Girl Can video.

#ThisGirlCan celebrates women doing their thing no matter how they do it, how they look or even how sweaty they get.

Feel motivated to #fitgotreal whether cycling, running, playing football, rugby, netball or more.

Search the hashtags on social media or visit www.thisgirlcan.co.uk

**THIS
GIRL
CAN**

Discover the wide variety of activities available locally in the North Somerset Active Directory.

The directory is for everyone, including beginners, older people, those returning to exercise or anyone who wants to try something different.

Visit www.n-somerset.gov.uk/activedirectory



2019



Health Trainers changes lives

Anyone who needs a little one-to-one encouragement to lead a healthier lifestyle can find a host of support through the Health Trainer service.

Health Trainers give free and confidential advice to adults in Weston-super-Mare who want to make healthy lifestyle changes, whether increasing physical activity, losing weight, giving up smoking or reducing their alcohol intake.

Tina Roberts met health trainer Debbie Stone for support and encouragement with losing weight and has lost three stone as a result.

Tina said: "Debbie referred me to Weight Watchers and saw me every other week, teaching me about eating all the right food.

"She supported me all the way through my journey, with regular appointments and talking through different resources I could use, such as the eat well guide and traffic light labelling."

Five months on, Tina still attends Weight Watchers and has gone from size 24 to size 16 to 18.

Tina added: "This has made an impact on my diabetes and I am now on a lower insulin, which is good for me. I also have more confidence.

"I still want to meet my target weight so I'm still going to Weight Watchers every week."



Tina Roberts

Support from the Health Trainers is completely free.

To book an appointment or discuss what's available call **01934 427 661** or email health.trainers@n-somerset.gov.uk



Free activities available

Free and half-price activities are available to some residents in North Somerset so they can make use of their local leisure centre to get active.

The Get Active Pass is available to people who meet certain criteria and are referred by their doctor, practice nurse or health trainer.

The pass provides limited free and half price entry to specified activities at these leisure centres: Scotch Horn in Nailsea, Hutton Moor in Weston-super-Mare, Strode in Clevedon, Backwell, Churchill, and Parish Wharf in Portishead.

Contact your local GP or health trainer to find out what the eligibility criteria is and if you can apply.



Improving your health in older age



Gentle exercise in older age can help you stay healthy, energetic and independent.

Improving your fitness and mobility is a positive thing no matter what your age and it doesn't matter how mobile you are – whether you are already fairly active or mostly chair-bound.

The social and emotional benefits of attending a class can also be as important as the increased energy levels.

Here in North Somerset, an Ageing Well programme of classes is managed by Age UK Somerset.

Choose from gentle classes such as seated yoga or Flexercise, to more active ones like Mature Movers or Zumba.



Portishead resident Val Guest, aged 79, had suffering back problems for 15 years, with a slight curvature of the spine and some disc degeneration.

She was struggling to attend her regular Pilates class as the floor work increased her pain and instead found a gentle Ageing Well class. Val said:

"I am amazed at the difference it made."

"I was seeing my osteopath monthly but haven't been in the past six months."

"The stiffness and tightness has completely gone, and I've even noticed an improvement in my strength and balance."

Put your best foot forward

Getting a more active lifestyle could be as simple as putting one foot in front of the other.

Walking is free, easy and can be done at any fitness level.

If you need a little extra support to get started, walking groups could be the answer.

North Somerset Council's health walks programme offers free, short, friendly, guided walks in the area's four main towns and some villages.

The majority of walks are on pavements so just come with comfortable and practical footwear.

For more information about Ageing Well classes contact Nikki Smith: **07530 777 895** or nikki.smith@ageuksomerset.org.uk

For a full list of classes visit www.ageuksomerset.org.uk



To view the latest health walks programme visit www.walkingforhealth.org.uk





Pupils from Yeo Moor Primary School

Walking to school improves wellbeing

Walking to school could be the perfect way for families to squeeze some exercise into their busy lives.

Current NHS guidelines say that young people who are active for at least an hour a day have better general health, stronger bones and higher levels of self-esteem.

Walking to and from school could be an easy way to fit this into your daily routine.

It also means parents avoid parking stress and save money on bus fares or fuel costs.

Children can also familiarise themselves with the local area and practise life skills, such as finding safe places to cross the road.

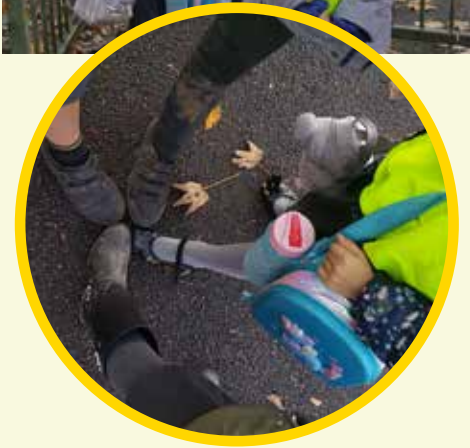
Schools run different schemes to encourage their pupils to be more active.

Yeo Moor Primary School, in Clevedon, took part in Modeshift STARS National School Travel Awards.

Assistant head teacher Tor Zakaria said:

"We would definitely recommend it."

"It had an impact on the number of children walking to school and they really enjoyed collecting badges and celebrating their achievements in assembly."



Top tips for walking to school:

- wear bright/reflective colours, especially in winter
- plan a safe route away from main roads
- if you live too far to walk all the way, try getting off the bus one stop early or parking five minutes away
- talk about what you see on your journey
- why not arrange to walk with friends one day a week, to help you all stick to it?

Schemes for schools

Schemes and resources are available to encourage pupils to walk to school:

Living Streets' WOW

North Somerset Council has partnered with national walking charity Living Streets to run this year-long walk to school challenge in 15 schools. Pupils who travel actively at least once a week for a month are rewarded with a badge.
rachel.stark@n-somerset.gov.uk

Modeshift STARS

Support is available to help schools complete the National School Travel Awards scheme.
joe.mansfield@n-somerset.gov.uk

Child pedestrian training

Volunteers teach young children knowledge and skills to cross roads safely.
roadsafety@n-somerset.gov.uk



Independent shop among Britain's best



Paul Batts (centre) with his wife Julie Batts and shop manager Peter Hughes.

An independent shop in Weston-super-Mare is celebrating after being named one of the best small shops in the country.

Outdoors and Active, in Meadow Street, reached the final 25 of the UK's Best Small Shop 2018 competition, run by the Independent Retailers Consortium.

The competition celebrates the commitment and creativity of independent retailers and the central role they play in their local community.

Outdoors and Active is a footwear, clothing and rucksack fitting specialist store.

Owner Paul Batts said: "It's so nice to get recognition at a national level for all the small things we do locally.

"People are now realising how important it is for the local economy to use your local shops and services.

"Not only do you get better service, but it means more social engagement which creates a stronger community.



"It is also important for Weston's regeneration to develop its lively independent areas, not only for the locals but also for visitors, as high streets are going through such big changes."

Paul, who has run the shop for 12 years, also does a lot to highlight the independent areas of the town.

He is chairman of Weston Business Improvement District, which represents more than 400 businesses in the town centre, and helped get a large metal arch fitted to promote the Orchard Meadows area.

Paul was also involved in helping Weston gain its plastic-free Cleaner Coastline status, as the shop has never used a plastic bag.

He also runs a plug-in hybrid car and tries to use ethical suppliers.

Game-changing conservation area for Weston

A new, extended conservation area for Weston-super-Mare has been described as a game changer.

The new Great Weston Conservation area stretches from Birnbeck Pier to Royal Sands and includes the town centre of Weston.

It was adopted by North Somerset Council in December.

Cara MacMahon, Heritage Action Zone officer, said: "This is a game changer for Weston-super-Mare.

"By including the town centre in the conservation area, we gain access to the partnership grants scheme from Historic England.

"This scheme will generate at least £500,000 of grant from Historic England over the next four years to enhance shop fronts. It will also help us engage with shop owners and residents as partners and stakeholders in shaping Weston as a quality place to live, work and enjoy."

For more information, visit www.n-somerset.gov.uk/regeneration



New book delves into Weston's past

Discover more about Weston-super-Mare's history and heritage in a new book about the beautiful town.

Weston-super-Mare – The Town and its Seaside Heritage has been commissioned by Historic England as part of the Great Weston Heritage Action Zone work.

The book launch takes place at 6pm on Wednesday 13 March, at the Blakehay Theatre, in Wadham Street.

In addition, and to coincide with the publication, images from the book will be on display in Tiffany's restaurant on the Grand Pier.

The exhibition runs from January until late June, every day from 10am-4pm.



Tickets for the book launch are free but booking is essential.

Contact the Blakehay Theatre box office on **01934 645 493** or visit www.blakehaytheatre.co.uk

Climbing centre proves a hit

People of all ages are facing their fears and climbing great heights at an exhilarating new attraction in Weston-super-Mare.

Clip n Climb is the town's first climbing centre and it opened in Dolphin Square in November.

It offers the 'ultimate climbing experience' to customers aged four and up, on a variety of colourful equipment.

You could try the face-to-face climbing wall, an 18-foot leap of faith platform, or the Astroball and Twister challenges.

Children's parties, pre-school sessions and fitness classes are also offered.

The centre has opened inside the Dolphin Square leisure hub, which is also home to Nandos, Anytime Fitness, Pizza Express, Luda Bingo, 7Bone Burger, Prezzo, Loco Mexicano, Costa Coffee and an eight-screen Cineworld cinema.

It forms an important site within the Weston town centre regeneration programme, to encourage inward investment in the town.



The team at Clip n Climb

Co-working space to double in size



A hot-desking and co-working space in Weston-super-Mare is more than doubling in size this year to provide more opportunities for local freelancers and small businesses.

The Stable, in Wadham Street, is increasing its shared and private office space from 3,000 to 7,000 square feet to create extra room for meetings, events, freelancers and small digital, tech and creative businesses.

The centre offers free hot-desking trials, rooms available to hire by non-members, and rolling time-based memberships for those in the creative, digital and technology industries.

The latest digital innovator choosing Weston-super-Mare and The Stable as his business base is Phil Hall.

Phil founded Elzware nearly 20 years ago, a company which utilises Chatbot technology – talking to computers.

Consumer-based virtual assistants, such as Apple's Siri or Amazon's Alexa, can tell you where the nearest restaurant is, what the weather will be like later or play your favourite tune.

In the business world, they are used by banks, telephone companies, insurance companies, charities, transport, education and many others.

Life spoke to Phil to find out more...

What is the business?

Elzware is a conversational user interface company – human to computer conversations.

For nearly 20 years we have created interactive systems for many businesses, including healthcare, education, local government, and corporations of all shapes and sizes.

Elzware is the base company and we have launched two other companies from this – Artelli42 and Echoborg.

Artelli42 creates photo-realistic web-based avatars, and Echoborg is a funny and thought-provoking performance show where the audience has a conversation with an artificial intelligence.

How did the company begin?

My dad brought me back a ZX Spectrum in 1982, which he'd borrowed from a friend at work, and I wrote some code and created a conversation.

Many years later I studied anthropology and decided to run an ethnography (a study of a cultural environment) in a virtual world. I found a computer system I could talk to in a virtual world and was hooked.

After some time working on the automation of a customer service system, I decided to go all-in on conversational systems and launched Elzware in 2002.



Phil Hall
of Elzware

n size



The Stable manager Kerry O'Neill and hub co-ordinator Sam Brannigan

Why did you move to Weston-super-Mare?

Elzware and the companies it works with are all remote so it really doesn't matter where people are physically.

We were based in Bristol but my wife and I decided to move to Weston for the good network speed, good transport links and lots of fresh air.

The cleanliness and beauty of the hillside area just drew us in - to have a beautiful ancient wood, the wonderful sea, a mainline train station and an exciting, emerging and developing town centre is just brilliant.



What made you move into the Stable?

At The Stable, the quality of space feels as good as the shared spaces in central Bristol but the mix of people is truly refreshing. I've taken a permanent desk and have some remote computers to access when I need to.

The Stable was probably the key point that brought us here. I can see it becoming a very busy hub for creativity of all sorts in the Weston area, working also with the forward-thinking Weston College.

How has your business been boosted since moving into The Stable?

Elzware was kept very busy last year as conversational user interfaces became more widely available.

A highlight was the Echoborg project becoming a finalist in the Future of Story Telling, an international competition in New York.

With Artelli42, we've taken a photo-realistic avatar-fronted system

into leading companies and show how realistic and reactive artificial intelligence can be within information and education systems.

What are your plans for the future?

We hope to bring the Echoborg to The Stable early this year. In 2019 we will also be rolling out conversational systems that are nearly indistinguishable from human beings. We will be doing this ethically and honestly, though, not using people's personal data to advertise to them or for any other purposes.

Find out more at www.thestableweston.com or contact hello@thestableweston.com or **01934 315 305**. Visit the website to find out more about the deals available, such as hot desking time vouchers.

www.elzware.com
www.artelli42.com
www.echoborg.com





Keeping you safe this New Year

Homes are often stacked with new gadgets and gizmos following the festive period so now could be the perfect time to ensure your property is safe and secure.

Avon and Somerset Police tackle many different types of crime, from major fraud and modern slavery to burglary and domestic abuse.

But did you know the simple steps you could take to protect you and your community against crime?

Here are the top five New Year's resolutions from the police...

- ✓ Look out for your neighbours and community
Get to know the people living on your street and check-in on those who could be most vulnerable to criminals such as rogue traders or burglars. Fraudsters often prey on older people.
- ✓ Rural residents can join Farm Watch
Farm Watch is a free service where residents share information and provide police with intelligence. Local policing teams also visit members, offering advice on how to make equipment or vehicles secure and ways to deter criminals from gaining access to valuables.

- ✓ Register items to increase your chances of getting them back
Items can be registered online to increase your chances of having them returned if you are unfortunate enough to have them taken. Register serial numbers through Immobilise at



www.immobilise.com

- ✓ Register your bike to deter thieves
Join the Bike Register for free and have your bike marked. Marking can act as a deterrent to thieves. Visit www.bikeregister.com
Also buy a secure lock for your bike.



- ✓ Volunteer and give back to your community
Many volunteer opportunities are available with Avon and Somerset Police if your new year's resolution is to give back to your community. Visit www.avonandsomerset.police.uk/jobs-and-volunteering

If you can't commit to something regular, joining your local Neighbourhood Watch could be another option.



www.avonandsomerset.police.uk





Literary festival returns



Would-be writers can get top tips from best-selling authors during a literary festival in Weston-super-Mare next month.

Weston Literary Festival, organised by Weston Town Council, takes place between Friday 22 February and Friday 1 March at Weston Museum and the Blakehay Theatre.

This week-long festival features talks, workshops, panel discussions, book signings and free children's storytelling and hopes to build on the success of last year's inaugural event.

Highlights include a talk by Dr Helen Pankhurst, great-granddaughter of Emmeline Pankhurst, which reveals how far women have come since the suffragettes, how far we still have to go and how we might get there.

Also appearing is Knitbone Pepper author, Claire Barker, whose children's stories were shortlisted for the Sainsbury's Children's Fiction award.

Amanda Prowse, who writes powerful and compelling gritty contemporary fiction, including the bestselling 'My Husband's Wife', will

talk about her stories which feature ordinary women overtaken by extraordinary circumstances.

There will also be writing and poetry workshops, information about self-publishing and getting publicity for your book.

A short story competition is also running. Entries, no longer than 800 words, must be received by Friday 1 February.



Tickets are needed for most events. Visit www.wsm-tc.gov.uk for details or the Facebook page

 **Westonlitfest**



Vegan food to tickle your taste buds

Vegan food and drink will be on the menu this month during a fantastic free food and drink festival.

eat:Vegan takes place from 10am to 4pm on Saturday 26 January at the Winter Gardens in Weston-super-Mare.

More than 70 food and drink producers will be showcasing their vegan products, as well as a

Thatchers Cider Tasting Room and a pop-up wine and gin festival in association with The Wine Shop at Winscombe.

You could also screen print your own bag with Zara Emily Print Works and learn new skills at the cookery school and demo stage demos.

www.eatfestivals.org



Blow away the cobwebs at Battery Point



Walk information

Distance: about 2.3 miles

Difficulty: medium – some rocky, uneven, uphill paths in Eastwood. A couple of sets of steps, going both up and down. Wear suitable footwear

Duration: about 1.5 hours at a leisurely pace

Map: OS 154 Explorer

How to get there

Start at map ref: ST 463770

By car: Free parking is available at the Lake Grounds

Refreshments: The Lake Grounds café is open daily 10am-4pm, except in very bad weather. Toilets available next door (20p charge)

Café Lido at Portishead Open Air Pool is run by volunteers. Opening times for 2019 were still to be confirmed at the time of *Life* going to print

Battery Point is the blustery headland in Portishead at the northern end of the Esplanade.

Last year, the historic site was one of 100 areas across the country to be named a Centenary Field, giving it protection in perpetuity as a site of remembrance.

The Centenary Fields programme, run by the Fields in Trust charity, protects valuable green space as a living remembrance to those who fought and lost their lives in World War 1.



Start the walk at Portishead's Lake Grounds, a popular park and lake situated right next to the Esplanade.

The beach and surrounding shoreline is an important area of geographical and biological interest, with its inter-tidal mudflats and saltmarsh habitats.

The limestone rocks of Battery Point and Woodhill Bay near the pool are part of the Portishead Pier to Black Nore Site of Special Scientific Interest.

Head north on the Esplanade towards Battery Point and the open air pool, and go up the steps next to the café.

Once you've reached the top of the headland, there are plenty of benches to sit on and enjoy the spectacular panoramic views.

The area has a long history as a 'look out' and area of defence.

There are remains of an Iron Age hillfort in Eastwood and beacons were erected during Elizabethan times to warn of invasion from the Spanish Armada.



The first fortifications were built in the 17th century, during the Civil War. Army barracks were then built during the Edwardian period, which were manned by Devon and Cornwall Fire Command during the First World War.

The original lighthouse was built in 1931 and after it came to the end of its life, this near-replica was installed in 1999. The bell from the original lighthouse can now be seen on Wyndham Way.

Searchlights and guns were put in place during the Second World War and these were manned by the Home Guard.

The site was acquired by the local council in 1949 and people have been able to enjoy unrestricted access since then.



Walk back across the headland and join the path that runs behind the pool to the woods.

Enter the woods, a local nature reserve, and take the steps up on the right-hand side.

Cross the road and continue up the steps opposite. This is a gentle uphill climb but watch out for rocks.

Keep going forwards, keeping to the main path. You'll have views out across the marina through the trees.

At the end of the path, follow the steps downhill onto Pier Road. Turn left, then continue downhill past the Royal Inn.



This map is for guidance only and walkers should carry and use the OS 1:25000 map when out. © Crown copyright and database rights 2019 Ordnance Survey 100023397. You are not permitted to copy, sub-license, distribute or sell this data to third parties in any form.

Take the steps downhill in front of you, signposted to the RNLI shop. These steps lead to the northern tip of Port Marine, with views across the Severn estuary.

Walk south along the marina's edge, once the site of power stations but now terraces of attractive, individual homes and luxury apartments.

Continue down the lock side until you reach the sculpture of the woman, part of the public art trail.

Turn right here and head towards Jubilee Park and the Arc of Angels. These five female figures commemorate the masts of Portishead Radio which stood above

the town and controlled shipping movements around the world.

Exit the park in the far left corner, going up the steps. Turn left at the top, exiting onto Burlington Road. Go to the end and cross straight over onto South Road.

At the roundabout, cross straight over then take the first right, Beach Road East. Continue straight on at the crossroads to join Beach Road West.

Turn left into Rodmoor Road, and this will lead you back to the Lake Grounds. Take time to pop into the Britain in Bloom award-winning Rodmoor Gardens first, though, maintained by Portishead in Bloom.





LOCAL EVENTS

January

Now until Sunday 13

Alfred Leete: the man behind the icon Weston Museum, Burlington Street, Weston. Telling the story of the Weston man who created the famous Your Country Needs You poster. www.westonmuseum.org

Sunday 13

Keith Price's 15th charity model train show 10am-4.30pm, The Campus, Highlands Lane, Locking Castle, Weston. Working layouts and trade stalls. Adults £7, OAPs £6.50, children £2, family ticket £16. www.westonsupermaretrainshow.com

The Snow Baby by Soap Soup Theatre 11am and 2pm, Weston Museum, Burlington Street, Weston. A theatre show with puppetry and storytelling for children aged 3 and up and their families. Tickets £8.50 each, free for under-2s. Call 01934 621 028 or call into the museum.

Friday 25

Trevor Nelson The Tropicana, Maine Parade, Weston-super-Mare. Slick and smooth stylings from the R&B king. www.tropicanaweston.co.uk



February

Friday 15

Dreadzone The Tropicana, Maine Parade, Weston-super-Mare. Electronic and dub with reggae roots. www.tropicanaweston.co.uk

Saturday 16

St Paul's Church Bridal Fair 2019 10am-5pm, St Paul's Church, Walliscote Road, Weston-super-Mare. Displays of wedding dresses, cakes, jewellery, hair and beauty, floristry, photography and much more. Visitors can enjoy refreshments, an afternoon fashion show and live music throughout. Free entry. office@stpauls-weston.uk.org

MUSIC

Mondays

Portishead in Harmony (E)(women only) 10.30am-12pm, The Folk Hall, Portishead High Street. £5 per session. www.wendysergeant.vpweb.co.uk, 01275 814 220

Clevedon A Cappella (E) (women only) 2-3.30pm, Kenn Road Methodist Church. £5 per session. www.wendysergeant.vpweb.co.uk, 01275 814 220

Afternoon singing group (fortnightly) 2-4pm, St Jude's Hall, St Peter's Church, Baytree Road, Worle. 01934 413 571

Mixed Company Community Choir (E) 7.30-9.30pm, Golden Valley Primary School, Nailsea. £6 per session with free taster

Clevedon Choral Society (E) 7.15 pm, Methodist Church Hall, Kenn Road, Clevedon. www.clevedonchoralsociety.org.uk

Rock Choir Weston-super-Mare (E, term time only) 7.45pm, Vintage Church, Hughenden Road. www.rockchoir.com, xander-jaymes.lepetit@rockchoir.com

Clevedon Light Opera Club (E) 7.30pm (Juniors Thu 7pm) Princes Hall, Clevedon Community Centre. 01275 791 556

Vocalise Choir (E) 7.30-9.30pm, United Reform Church, Waterloo Street, Weston. £5 inc refreshments. 01934 627 709. www.vocaliseann.co.uk

Clevedon Players (and Wed, Fri)(leading up to a play) 7.30-10pm, the Stables, behind Princes Hall, Princes Road, Clevedon. 01275 853 975

Costanzi Consort (E) 7.45pm, All Saints Church, Weston-super-Mare. Auditioned chamber choir directed by Peter Leech. www.costanziconsort.org.uk

RAFA Concert Band (E) 8pm, Victoria Methodist Church Hall, Station Road, Weston-super-Mare. www.rafaconcertband.org.uk, 01934 820 205

Footlights Community Choir 8-9:30pm, Community Hall, Trinity School, Portishead. No experience necessary.

Tuesdays

Cadbury Wind Band (E)(term time only) 7.15-9.15pm, Yatton Rugby Football Club. 01275 792 300

Lyrical Ladies Choir (E) 7.20-8.20pm, Nailsea School. £4 per session. 07722 298 550, gillatkinson15@blueyonder.co.uk

Waves of Harmony (E) 7.30pm, Weston Rugby Football Club, Sunnyside Road, Weston-super-Mare. Women's 4-part acapella group. New members very welcome. 01934 642 806 or www.wavesofharmony.co.uk

Cheddar Male Choir(E) 7.30pm, Draycott Village Hall. New members welcome. www.cheddarmvchoir.co.uk

Winscombe Community Singers (E) 7.30pm, Winscombe Community Centre, Sandford Road. www.facebook.com/winscombcommunitysingers

Campus Choir (E) 7.30-9pm, The Campus, Locking Castle, Weston-super-Mare. 01934 832 283. www.singoutlouduk.com

Weston Choral Society (E) (term time only) 7.30pm, Milton Methodist Church Hall, Milton Hill, Weston-super-Mare. 01934 813 255

Clevedon Music Club (3) 7.30pm, Community Centre, Princes Road. Classical concerts by professional musicians. £8 per concert on the door. 01275 879 099

Nailsea Choral Society (E) 7.30pm, Vestry Hall, Christ Church, Nailsea. 01275 875 533 www.nailseachoral.org.uk

Trinity Singers (E) 7.30pm, Churchill Primary School, Pudding Pie Lane, Langford. www.trinitysingers.co.uk, 01934 415 301

Tra La Community Choir (A) 7.30pm, Club Room, Community Centre, Long Ashton. 07932 623 672

Rock Choir Clevedon (E - term time only) 7.45pm, Christchurch Clevedon, Chapel Hill, Clevedon. www.rockchoir.com, xander-jaymes.lepetit@rockchoir.com

Portishead Town Band (E) 7.45pm, Methodist Church Hall, High Street. New players welcome. 07816 544 474, 01275 818 575

Pill Community Choir (E) 7.45-9.15pm, Pill Community Centre. £5 per session or £4 if paying for a term. Free taster session. www.wendysergeant.vpweb.co.uk, 01275 814 220

Congresbury Singers (E) 7.50pm, Old School Rooms, Congresbury. 01934 876 104

Samba Drumming (E) 8-10pm, All Saint's Church Hall, All Saint's Lane, Clevedon. Beginners welcome. £6 with free taster session. 01275 545 714

Weston Brass Band (E)(and Thu) 8pm, Church Road Methodist Church, Upper Church Road, Weston-super-Mare. 01934 824 461

Nailsea Folk Club (2) 8pm, Grove Sports Centre, Nailsea. All performers and audience welcome. £1. www.nailseafolkclub.co.uk

Wednesdays

Clevedon Ladies Choir (E)(September-June) 2.15-3.30pm, St Peter's Church Hall, Alexandra Road. £25 per year. 01275 874 109 clevedonladieschoir@gmail.com

Highly Strung Community Band (E) 6.30-9.30pm. Folk/country music. www.highlystrungcommunityband.co.uk, 01275 847 909

Weston Music Appreciation Society (A) 7.30pm, St Jude's Hall, Baytree Road. 01934 814 752

Somerset Singers (E) 7.30pm, Meeting House, Sidcot School, Sidcot. 01934 743 965

Yatton Ladies Choir (E) 7.30-8.30pm, Yatton Infants School. £4 per session. 07722 298 550, gillatkinson15@blueyonder.co.uk

Harmony Plus Choir (E) 7.45-9pm, Emmanuel Church, Weston. 01934 629 112

Footlights Community Choir 7.45-9.15pm, Community Entrance, Nailsea School, Mizzymeard Road. No experience necessary. 07818 065 015 footlightsperformance@gmail.com

Portishead Community Choir (E) 8-9.30pm, Avon Way Hall, Portishead. £5 per session or £4 if paying for a term. Free taster session. www.wendysergeant.vpweb.co.uk, 01275 814 220

Thursdays

Music Is Fun (E)(babies, toddlers and pre-schoolers) Methodist Church, Nailsea. 30 min session £3.40, 07722 298 550, gillatkinson15@blueyonder.co.uk

Singing Mums Choir (E) 7.10-8.10pm, Nailsea School. £4 per session. 07722 298 550, gillatkinson15@blueyonder.co.uk

The Baytree Singers (E) 7.30-9.30pm, St Jude's Hall, St Peter's Church, Baytree Road, Worle. No experience necessary.

Portishead Choral Society (E) 7.45pm, The Folk Hall, High Street, Portishead. 01275 855 059

Cantiamo Ladies Choir (A)(grade 8+ musicians only) 8.15-9.30pm, Nailsea School. £5 per session. 07722 298 550, gillatkinson15@blueyonder.co.uk



Weston Organ and Keyboard Club (1)
7.30pm, Somerset Suite, Weston Football Club. £5 members, £6 non-members.
01934 812 759

Worle Community Choir (E)
7.30pm, Becket Primary School, Tavistock Road, Worle. New members welcome. 07972 909 939

Vibe Pop/Rock Choir (E) 7.30-9.30 pm, St Joseph's Primary School, Bristol Road, Portishead. vibepopchoir@gmail.com

Muskrats Jazz Band (1)
8.30pm, Clarence House, High Street, Portishead. £4. Bar and dancing, all welcome. 01275 814 434

Fridays

Singastics Junior Choir (E) (Y3-Y7) 3.40-4.30pm, Hannah More School, Nailsea. £3 per session. 07722 298 550, gillatkinson15@blueyonder.co.uk

Lions Brass 4 Youth (E)
5.30pm/6.15-7.45pm, 1st Clevedon Scout Hall. County brass band. 07815 733 886

Weston Youth Orchestra (E)
6-7pm (8-12 yrs), 7-9pm (12-20 yrs). Boulevard United Reformed Church, Weston-super-Mare. 01934 622 519 or 07787 520 230

Male Choir (E) 7.30-9pm, Victoria Methodist Hall, Weston-super-Mare. 01934 529 728

North Somerset Community Brass Band (E) 7.30-9.30pm, Puxton and Hewish Village Hall. 01275 397 582

Congresbury Brass Band (E) 7.30-9.30pm, Methodist Church Hall, Congresbury. 01275 849 611 / 07986 007 829

Clevedon Gilbert and Sullivan Society (E)
7.30-10pm, St Peter's Church Hall, Alexandra Road, Clevedon. New members welcome. 01934 838 713

Nailsea Concert Orchestra (E) (term time only) 7.30pm, Nailsea Methodist Church. www.nailseaconcertorchestra.org

West Mendip Orchestra (E) (term time only) 7.45-10pm, Lynch Chapel, Winscombe. 01275 463 480

Harmony Plus Brass (E)
7.45pm, Emmanuel Church, Weston. 01934 629 112

Nailsea Theatre Club (E)
8pm, Nailsea Little Theatre, Union Street. 01275 852 275 (Box office: 07772 981 037)

Saturdays

Pret A Changer Ladies Choir (A) 9.30-11.30am, Southfield Church, Nailsea. £8 per session. 07722 298 550, gillatkinson15@blueyonder.co.uk

Cadbury Saxophone Band (A) 10.15am-12.30pm in Cleeve/Yatton. 01934 830 072 or www.cadburysaxband.co.uk

Sundays

Barley Rye choir (E)
6.30-8.30pm (winter) 7-9pm (summer), Ring o' Bells, Nailsea. New members welcome. 01454 411 052

DANCE

Monday

DB's Dance Club (E)
10-11am, Clevedon Community Centre. Line dancing. 01275 854 375

Latin and jive (E) (absolute beginners 1-2pm, next steps 2.15pm) St Peter's Church Hall, Clevedon. £5. 07940 823 581

Sequence, Ballroom and Latin Tea dance (E)
2-4.30pm, St George's Community Centre, Willow Close, Weston-super-Mare. 07437 203 642

Egyptian Bellydance (E) (term time only) 7-8pm, Backwell WI Hall, Station Road. 01275 855 016

Nailsea Scottish Dancers (E) 8pm, Christchurch Hall, Christchurch Close, Nailsea. £2.50. 01275 790 937

Portishead Square Dancers (E) 8-10pm, Folk Hall, Portishead. 01275 817 964 £2.50 each class

Tuesdays

Social Morning with Historic and Country Dancing to Live Music (E) 9.30-11.30am, Folk Hall, Portishead. £3 per person. 01275 847 909

Movement to Music (E)
10-11am, Methodist Church, Portishead. 07899 754 937

DB's Dance Club social tea dance (E) 2.30-5pm, Clevedon Community Centre. 01275 854 375

Abanico Salsa Classes (E)
7.30-10:30pm (3 classes, beginners to improvers) Kenn Village Hall. Call in advance: 07971 565 406

Avon Dance Club (E)
8-10pm, Somerset Hall, Portishead. Ballroom and Latin practice night. 01934 823 128

Backwell Sequence Dance Club (E) 8-10.15pm, WI Hall, Backwell. £3 per person. 07710 460 550

Weston Folk Dance Club (E) 8-10pm, Corpus Christi Church Hall, Weston-super-Mare. 01934 514 226

Brazilian carnival style dance with live drummers (E) 8-10pm, All Saint's Hall Clevedon. Call 07780 641 427

Portishead LeRoc (E)
8-10.30pm, Portishead Primary School, Station Road. Modern jive. 07909 063 624 heather@portisheadleroc.com

In Motion Dance (E)
8-11pm, Banwell Village Hall. 07903 655 924. www.in-motion-dance.co.uk

Wednesdays

New and Old Sequence dance class (E)
10.30am-12.30pm, Kewstoke Village Hall. 07437 203 642

DB's Dance Club line dancing (E)
10.45-11.45am, Clevedon Community Centre. 01275 854 375

Total beginners sequence and ballroom (E) noon-1pm, Kewstoke Village Hall. 07760 176 747

Sequence tea dance (E)
2-4pm, Avonway Hall, Portishead. 01934 644 745

Latin and jive (E) (absolute beginners 7-8pm, next steps 8.15pm) St Peter's Church Hall, Clevedon. £5. 07940 823 581

Easy Strollers line dancing (E) beginners 7-8pm, 2nd Clevedon Scout Hall, Coleridge Vale Road North
50s and 60s rock 'n' roll (E) 8pm-late, Tavern Inn the Town, Regent Street, Weston-super-Mare. 01934 412 826

Thursdays

Irish Set, English and Scottish Country Dance (E)
10am-noon, North Weston Village Hall, Portishead. £5. 01275 847 909.

DB's Dance Club line dancing (E) 11am-1pm, Folk Hall, Portishead.

01275 854 375

Yatton Sequence Dance Club (E) 2-4.30pm, Claverham Village Hall. 01275 851 221

Egyptian Bellydance (E) (term time only) 6.45-7.45pm, St Saviours Church Hall, Locking Road, Weston-super-Mare. 01275 855 016

Nailsea Le Roc (E)
8-10.30pm, Scotch Horn Leisure Centre, Nailsea. Beginners/intermediates. £6. 07816 649 077

Fridays

Sequence, Ballroom, and Latin Tea dance (E)
2-4.30pm, Kewstoke Village Hall. 07760 176 747

North Somerset Intercultural Dancing Association (E)
7.45-9.30pm, Nailsea Methodist Church, Silver Street. Admission £2. www.nida.site40.net

Clevedon Sequence Dance Club (E) 7.45-10.30pm, Walton St Mary's Church Hall. 01275 847 293

Social dance (1)
8-11.30pm, Somerset Hall, Portishead. £5. 01275 831 884

Social dance (4)
8-10.30pm, St. James Hall, Winscombe. £4. 01934 516 852

Saturdays

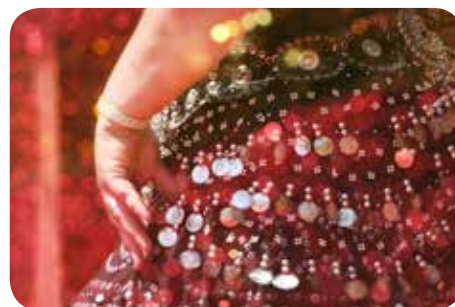
Chelis Theatre Company (E)
2-5pm St. Saviours Church Hall, Weston-super-Mare. Drama, dance and singing for 6-18-year-olds. 01934 625 301

Sundays

Avon Dance Club Tea Dance (Monthly) 3-6pm, Somerset Hall Portishead. 01934 823 128

Ballroom and sequence (E)
7.30-10pm, Kewstoke Village Hall. 07437 203 642

Social dancing (E)
7.30-10.30pm, Hutton Moor Leisure Centre, Weston-super-Mare. £5. 01934 518 529 www.westonsocialdancing.co.uk



Inspiring young musical talent

Could someone in your family be the next Lauren Zhang or Nicola Benedetti? Or would playing a musical instrument help them gain confidence in other areas?

Nurturing musical talent is high on the agenda in North Somerset and help is at hand to enable young people to reach their full potential.

North Somerset Centre for Young Musicians (NSCYM) encompasses 18 ensembles for children and young people to play strings, brass, percussion, woodwind, piano, saxophone, guitar and more.

The groups meet weekly during term time in Backwell, Clevedon and Weston-super-Mare and new members are always welcome to join.

Playing an instrument has many benefits, including improving concentration, language, literacy skills and memory, as well as increasing motivation, empathy and social skills.

Mark Trego, music service leader at North Somerset Council, said: "Although the music making is totally brilliant and the performances great, for many the benefits of being part of a vibrant young musical community, making friends and basically having fun is as important."

NSCYM ensembles perform regularly at community events, churches and sell-out concerts both in North Somerset and further afield.

In recent years, more advanced groups have played at Birmingham's Symphony Hall and

Where the ensembles meet

Wednesday (Weston-s-Mare)

- School of Pop and Rock (minimum age 11)

Thursday (Worle)

- North Somerset Jazz Orchestra – Big Band (Grade 5+)
- Clarinet Ensemble (Grade 5+)
- Simply Strings – (Grade 4+)
- Tutti – beginners orchestra

Saturday (Backwell)

- Orchestras, string ensembles and wind bands for players of Grade 1 to 5

Saturday (Clevedon)

- Symphony orchestra, concert band, swing band and string ensemble for players of Grade 5 and above

last summer 61 members travelled to the Loire region of France for three concerts.

For more information about North Somerset Centre for Young Musicians visit www.nsmusic4you.org.uk or call 01934 426 430



New coastal cycle route a step closer

Long-awaited plans to join up a coastal walking and cycling route from Brean to Clevedon have moved a step closer.

A planning application was submitted at the end of last year to build a 1.4 km shared-use walking and cycling path at Tutshill Sluice, which will link Kingston Seymour and Wick St Lawrence.

The path, which follows a section of old railway line, will enable cyclists and walkers to cross the Congresbury Yeo river.

The quiet route will reduce the distance between Weston and Clevedon town centres by about four miles for non-motorised traffic and improve safety by avoiding the busy A370.

It will also encourage active travel as local people and visitors will be more likely to leave their cars at home and commute by bike.

Information about the history of the area and detail about the lowlands that the sluice gates protect will be provided on information boards along the route, along with details about local wildlife.



The path, initially proposed to be made from stone recycled from old road surfaces, will be an important further step in linking up the region's coastal towns.

It follows the success of the Brean Down Way, the largely traffic-free route from Uphill to Brean, which opened in 2017.

Frankie Mann, sustainable travel and road safety manager at North Somerset Council, said:

"The path will benefit both locals and visitors by providing an excellent addition to the region's flourishing cycle network and bringing further economic development to the area."



An expression of interest of up to £650,000 towards the project has been given approval by the Government's Department of Environment, Farming and Rural Affairs.

A full business case to secure the funding is due to be submitted if planning consent is granted.

View the planning application for the new path online at www.n-somerset.gov.uk/planning and search for 'Tutshill'



Enjoy a host of after-dark entertainment in Weston

Evening and night time visitors to Weston-super-Mare's town centre can relax and feel safe while enjoying sociable bars, fantastic food, live music, unique entertainment and more.

The town centre has gained Purple Flag status for the last three years – meaning it offers an entertaining, diverse, safe and enjoyable night out.

The after-dark experience is ever-improving as part of the town's regeneration programme and new visitors are impressed by what they've found.

Businessman Derek Kinsley recently moved to Weston-super-Mare from Bristol because he wanted a more rural life. He was given a tour of local venues by a friend and said: "We wandered down the promenade before going to dinner at Lasseters in the Winter Gardens.

"After a stunning meal, we walked through the Italian Gardens into Grove Village to find a live band in the courtyard of the Brit Bar and acoustic music in Loves Café. We then ended up in the new Mediterranean, Olea Lounge.

"I was amazed at the variety of high-quality places to go and things to do on an average Friday evening.

"The whole town had a lovely, relaxed vibe and I felt safe and comfortable wandering around at night.

"I have since brought friends of mine who own a restaurant in Bristol for dinner at Michelangelo's and they were really impressed.

"I am really happy to have moved to Weston, proud to call it my home and look forward to exploring all that the nightlife has to offer."



Derek Kinsley



Flying the Purple Flag

Work is continually being done to improve the perception and reality of Weston at night.

Over the last three years, there has been a five per cent fall in recorded crime and anti-social behaviour.

In recognition of this work, a new joint submission has now been made by North Somerset Council, Avon and Somerset Police and Weston Business Improvement District (BID) to retain the prestigious Purple Flag award for another year.

Highlights in the past year include the traffic light scheme for licensed premises going from strength to strength.

This status identifies towns and cities which provide an entertaining, diverse and safe night out.

It was introduced in 2015 and back then 15 premises were rated as red or amber because they were poorly managed or raising concerns, but now they are all rated green.

A Best Bar None scheme is also being introduced, to help build a positive relationship between the licensed trade, police and the council.

Howard Potheary, North Somerset Council's community safety manager, said: "We want to provide a safe, enjoyable and friendly evening and night-time economy for everyone, while promoting good trade and tourism and reducing demand on police and clinical services."

Follow the Safer Stronger North Somerset team on social media for regular updates.

 @saferstrongerns
 saferstrongerns



Sgt Lee Kerslake

Police patrols

Police response teams patrol Weston's main licensed premises at night to prevent disorder or deal with any that occurs.

Wearing high-visibility jackets, officers work in zones and can issue dispersal notices to anyone causing or likely to cause anti-social behaviour, asking them to leave the area for about 12 hours.

Sergeant Lee Kerslake is overseeing the police response in Weston town centre at night.

He said: "We work 5pm to 3am shifts and try to mix patrolling and managing the areas with licensed premises checks and talking to premises owners, managers and staff.

"In the main we try to support security as effectively as we can in doing their job."

"Where we have routinely problematic premises, we seek to work with them to improve the management or take action as necessary."

MAVISbus is available to hire for community events, roadshows or outreach work. Visit www.mavisbus.net, call 01934 427 265 or email mavis.bus@n-somerset.gov.uk

A safe haven in the town centre

MAVISbus – the distinctive purple multi-agency vehicle in service – provides a safe, warm and non-judgmental place for people to get help or medical attention on their night out.

During winter, the community bus is parked in Weston's town centre on Saturdays after payday and other Saturday nights when high demand is anticipated.

On board, you can find a variety of people on duty, including the police, ambulance, street wardens, street pastors, council licensing officers and other local agencies. You could get treated for a minor injury, get help calling a taxi, or it can even just be somewhere to charge your phone.

St John Ambulance's volunteer area manager Damien Macdonald said: "With our first aiders close to the action, ready to take care of people who are sick, injured or worse for wear, we're making sure that should anyone's night out come to an abrupt end for any reason, they'll be in safe hands."

St John Ambulance is now recruiting more volunteers in North Somerset. Find out more at www.sja.org.uk/volunteer





Low-cost loan to help get on the property ladder

First-time buyers who want to make 2019 the year they get on the property ladder could get help with costs thanks to a council loan scheme.

As part of its commitment to supporting residents to be able to afford and own their own home, North Somerset Council's first time buyer loan is a low cost scheme designed to help first time buyers with the initial cost of buying their first home.

People who live in or have a connection to North Somerset can apply for a loan of up to £5,000 to help with moving costs, such as removals or legal fees.

One local couple who used the loan said: "Without the extra funds, we would have needed to save for longer, while at the same time house prices would be rising.

"We felt we were fighting a losing battle until our friend told us about this new scheme. We have now moved in and are happy in our new home."

The loans are administered by Wessex Resolutions Community Interest Company, an ethical lender, on behalf of the council.

The interest rate is fixed at four per cent throughout the loan period (4.2 per cent APR) with no early repayment charges.

There is flexibility to make lump sum reductions of £100 or more at any time and you may even be able to delay the start of your repayments to allow you to settle into your new home first.

Loans are subject to status. Missing future payments could affect your credit rating and ability to obtain credit in the future.

Wessex Resolutions CIC may insist on loans being protected at the Land Registry by a Title Restriction.



If you're a first-time buyer interested in the loan scheme and would like to know more, contact Wessex Resolutions CIC:
01823 461 009
enquiries@wrcic.org.uk

www.n-somerset.gov.uk/firsttimebuyers





Building work has now started on a unique food and drink innovation centre – the only one of its kind in the South West – in Weston-super-Mare.

The Food Works^{SW} is being built in a 10-acre Food Enterprise Zone, within Junction 21 Enterprise Area, and will provide a range of specialist facilities and technical support for food and drink manufacturers across the South West region.

The centre will help businesses of all sizes to innovate and grow and will include:

- 12 food grade business units to lease
- four product development areas
- exhibition, training and workshop space
- meeting rooms and a café.

Simon Gregory, North Somerset Council's projects and programmes manager, said: "The Food Works^{SW} will help to enhance the undoubted strengths of the area's food and drink sector.



"It will not only benefit established food and drink manufacturers but will also kick-start others and play a vital role in the council's bid to drive growth in the North Somerset economy and create local jobs."

The scheme is funded by the West of England Local Enterprise Partnership (LEP) through the Local Growth Fund and the £11.3m construction contract is being carried out by Willmott Dixon.

Now that building work has started on site, the council is in the process of appointing an operator to run the centre.

A 15-year contract is due to be awarded in March. This will give the operator the opportunity to sign-up occupiers and take bookings ready for when it opens next year.

The operator will manage all aspects of The Food Works^{SW} on the council's behalf.



Do you run a food or drink business and would you like to know more about the opportunities available at The Food Works^{SW}?



Do you want to know more about the support and opportunities available to businesses in the wider Junction 21 Enterprise Area?

Contact North Somerset Council's economic development team on **01934 426 266** or email **business@n-somerset.gov.uk** www.foodworks-sw.co.uk

Reduce your waste line

Renew your recycling habits to help North Somerset be a little greener this New Year.

Recycling rates going up in North Somerset

Recycling rates are on the rise in North Somerset thanks to continued efforts from local residents and this is good news for all of us.

Last year over 6,500 tonnes of North Somerset food waste was converted into carbon-free electricity. That's enough to power around 1,000 local homes.

In total, almost 61 per cent of waste generated in North Somerset was recycled in the first half of last year.

Sending waste to landfill is expensive, both in terms of financial cost, and the cost to the environment. By minimising the waste we all send to landfill, we can work together to keep costs down and reduce our environmental impact.

Colin Russell, North Somerset Council's recycling and waste

manager, said: "Over the year ahead we will be working hard with our contractor Biffa to make it as easy as possible for people to recycle more.

"Sometimes it can be confusing for people to know what goes in each box, and what can and can't be recycled, particularly as there's no common approach nationally.

"The good news for our residents is that in North Somerset we're able to recycle more items than most other parts of the country.

"So we're asking residents to make a new year's resolution to change one thing for recycling.

"That might be recycling food waste from now on using the caddies we provide, or it might be encouraging other people in the household to do their bit too."

Keep reading *Life* over the coming months for more ideas on how you can recycle more and reduce your impact on the environment by reducing your waste line.

Recycling real Christmas trees

Real Christmas trees – minus the decorations and pots – will be collected from the kerbside this month for people signed up to the garden waste service.

Put them out on your usual garden waste collection date between Monday 21 January and Friday 1 February.

Garden waste collections are monthly during winter so check when yours is due. All recycling calendars can be found online at www.n-somerset.gov.uk/calendar

Christmas trees can also be taken to one of the area's three recycling centres and put into the garden waste skip.



Making the most of the recycling centre

Recycling centres can get very busy following the festive period so sorting your items before you set out can help speed up the process.

If you're taking black bags of waste, staff may ask you to open them so they can check nothing recyclable is inside.

Follow signs around the site to find the right containers and dispose of your recycling in the correct place.

Recycling centres are currently on their winter opening hours – until **Friday 1 March** at Weston-super-Mare and Portishead, and until **Sunday 31 March** at Backwell.



Find opening hours and a full list of what can be taken there at www.n-somerset.gov.uk/recyclingcentres

Sign up for the garden waste service at www.n-somerset.gov.uk/gardenwaste



e in 2019

Where does your recycling go?



Questions are often asked about where the recycling goes once it's taken from the kerbside.

This month, *Life* looks at **paper**...



Read the next edition of *Life* to find out about the journey of **plastic**.



Recycling and waste collections were changed during the festive period to allow for bank holidays.

Collections will return to normal on Monday 14 January.

Check your calendar online at www.n-somerset.gov.uk/calendar

In the event of severe weather, keep an eye on www.n-somerset.gov.uk/disruption and the council's social

media feeds to see if your recycling or waste collections are affected



Tackling the climate change crisis



The most extensive warning about rising global temperatures has been given as scientists show efforts to tackle climate change are way off track.

Last autumn a series of stark warnings came out – that CO₂ emissions have risen for the first time in four years, that UK summers could be 5°C warmer by 2070, and that

by 2080 up to 1.2 million UK homes may be at increased risk of flooding.

Most countries around the world adopted the Paris Agreement in 2015 to limit the global temperature rise to 1.5°C above pre-industrial levels, a moderately safe level of heating.

However, the dramatic report by the Intergovernmental Panel on Climate

Change (IPCC) revealed that the world was heading towards a temperature rise of 3°C instead.

This would be catastrophic so rapid and significant changes are needed in energy use, land use, cities and industry.

Life takes a look at what is happening locally in North Somerset...

Action plan for North Somerset

The priorities for reducing carbon emissions within North Somerset have been set out in an action plan.

North Somerset Council has adopted a local carbon reduction target, agreed with the other West of England councils, to reduce emissions by 50 per cent by 2035.

The council is focusing on actions which will deliver social and economic benefits as well as environmental ones.

The plan will be reviewed regularly to include actions and opportunities as they arise.

Read North Somerset Council's low carbon action plan at www.n-somerset.gov.uk/climatechange



Electric vehicles

Transport accounts for 34 per cent of the UK's greenhouse gas emissions so the increased popularity of electric vehicles can help carbon reduction targets.

The efficiency of plug-in cars is ever-increasing, with standard driving ranges now up to 200 miles, and more affordable models are available.

At North Somerset Council, electric vehicles make up 40 per cent of its fleet.

As well as reduced carbon emissions, they bring financial savings and improvements in air quality.

Improvements are also in the pipeline for a public recharging network, as part of the Go Ultra Low West project.



Funding is available for businesses across the West of England which are keen to use electric vehicles.

Email sustainable.travel@n-somerset.gov.uk to find out more



Planning future growth

New development should take carbon reduction into account through good design and using renewable and low carbon forms of energy.

To help make this happen it must be reflected in rules that guide development, which are included as part of a series of major consultations around housing, employment, and transport growth that are happening now, and are planning the future of North Somerset until 2036.

There is a need for about 25,000 new homes in North Somerset by 2036 and where these might go and what infrastructure is needed to make sure they work well is to be part of a local plan.

Last autumn saw an early consultation about the Local Plan 2036, which also sets out planning policy, and questions about climate change were included. A range of options was

put forward, such as requiring a minimum energy efficiency standard for new homes, and whether suitable sites should be identified for large-scale renewable energy development.



For more details visit www.n-somerset.gov.uk/localplan2036
Comment on proposed planning rules and climate change targets by emailing planning.policy@n-somerset.gov.uk

Improving energy efficiency in the home

Energy efficiency in the home can be improved through a range of low-cost work.

If you've bought a house with an energy performance certificate (EPC), consider incorporating any recommendations into planned repairs or refurbishments.

North Somerset Council wants to tackle fuel poverty and the effects of people living in cold homes.

It is highest in the private rented sector as short-term leases mean

tenants aren't encouraged to carry out work.

Last year the council approved a carbon reduction business plan which covers domestic energy efficiency and renewable energy use.

As part of this, homes which meet the eligibility criteria – particularly in the private rented sector and residential park homes – could get funding to install more heating and insulation features.

Use a reputable contractor to carry out work in your home, using recommendations from friends or family or recognised accreditation schemes. Visit www.buywithconfidence.gov.uk or www.trustmark.org.uk

For home energy advice and to check eligibility for funding, contact the Centre for Sustainable Energy: 0800 082 2234 or www.cse.org.uk/advice

What can I do?

The world cannot meet its climate change target without individuals changing too.

The IPCC report suggests some individual actions:

- buy less meat, milk, cheese and butter and more locally-sourced seasonal food
- drive electric cars, and walk or cycle short distances
- take trains and buses instead of planes
- use video conferencing instead of business travel
- use a washing line instead of a tumble dryer
- insulate your home
- demand low carbon in every consumer product.

In the thick of grit

Weather stations, round-the-clock work and sophisticated forecasting all help ensure North Somerset's roads are gritted when the temperature drops.



From October to April, council officers take on extra responsibilities in order to work seven days a week to ensure the main road network is kept as safe as possible.

The team is made up of highway engineers who are responsible for improving and maintaining the roads across North Somerset all year round.

Life spoke to one of the key decision-makers in the team to find out more about how and when they decide to send out the gritters.

Peter King is a one of five decision-makers who work on a rota basis to ensure someone is available 24-hours-a-day.

Training for the job is thorough and ongoing, with regular courses and refreshers ahead of every winter season.

Pete said: "This is not a 9-5 job. It involves working at weekends, in the evening, and sometimes during the night.

"No two days or forecasts are the same and there are different challenges and hazards we have to respond to."

Weather stations and forecasts

Data from three weather stations form a key part of the decision-making process.

The stations – located at Bristol Airport, Churchill and Clevedon – collect information on road and

air temperatures, wind speeds and moisture levels in the air.

Data is sent every 20 minutes to environmental measurement company, Vaisala.

Vaisala process the information and send it on to weather forecast company MetDesk, which provides accurate local forecasts.

Three forecasts a day are provided to the team – 6am, midday and 6pm.

The midday forecast is usually used to make a decision about whether or not to send out the gritters.



Pete King in the salt barn



The gritters

Six gritters operate in North Somerset and the brand new fleet was recently renamed in a public vote.

Bleadon-cold, Nailski, Portispread, Weston-scooper-Mare, Sleetholm and Burrington can spread an average of three-and-a-half tonnes on a 78-mile gritting route.



Gritting facts

- The council's salt barn holds 2,000 tonnes of salt
- 40 per cent of the council's road network is treated
- Each gritter now uses sophisticated software to

control how much salt is dispersed, where and how widely. This means the driver can just concentrate on driving, so improving safety. The driver can over-ride the system if needed.

Challenges of the job

The sporadic nature of gritting means careful planning needs to be done to ensure the right number of drivers are available at the correct times.

Gritting duties are in addition to the driver's working day. It's challenging during severe weather to co-ordinate all the driving hours and the mandatory nine-hour break needed during a 24-hour period.

Gritting should also avoid the rush hour periods if possible.

The Beast from the East last year meant the winter maintenance team had to respond to a red weather warning.

Teams across the council also joined forces to keep council services running as much as possible.

How can you help?

Residents can help during bad weather in order to keep local communities safe.

Cold weather can be very harmful, especially for people aged 65 or older. Check in on neighbours and loved ones and offer to help if possible.

Walking or travelling in bad weather can be frightening for elderly or frail people so offer to collect any prescriptions, shopping or supplies.

If you are clearing snow or ice from the area around your home, could you help an elderly neighbour too?

Gritting routes

Visit www.n-somerset.gov.uk/winterroads and enter your postcode to see which routes are gritted and help plan your journey

Protecting North Somerset's

History enthusiasts across North Somerset are volunteering their time to share knowledge and skills and help protect the area's heritage for future generations.

Preserving an area's heritage is important in recognising the buildings or places within it that have historic and cultural value.

It helps us understand previous generations and the history of where we came from.

Volunteers are working hard across North Somerset and you could get involved too...

Work continues at Worlebury hillfort



Volunteers remove piles of stones

Conserving Barrow Gurney's history

The special character of Barrow Gurney will be preserved for future generations thanks to conservation area status being adopted for the historic village.

Barrow Gurney is a well-preserved example of an estate village, showing the historic, economic and social relationships that supported the 'great house' at Barrow Court.

It has a high rate of pre-1838 buildings and went through extensive remodelling in the early 20th century, particularly in the Arts and Crafts style.

Conservation area status was granted in June last year – the first new conservation area in North Somerset for 20 years.

Former parish council chairman Eric Gates, who was involved in getting the status, said:

"The designation recognises the unique and historic character of the village.

"A new footpath also means it is much easier to walk through the centre and appreciate the buildings and the valley in which the community is set."

Volunteers are continuing to work hard at Weston-super-Mare's Iron Age hillfort to remove tree cover and vegetation.

Vegetation is the biggest threat to Worlebury Camp hillfort, the 10-hectare site overlooking Weston Bay, Sand Bay and the Bristol Channel.

Thanks to clearance work already undertaken at the Scheduled Monument, the Glade area is now returning to its natural state of limestone grassland and Iron Age storage pits are clearly visible.

Volunteers have also removed some illegally-constructed features, such as piles of stones people have made from the defensive banks of the hillfort itself.

Volunteer John Martel said: "I went to school within yards of the hillfort's ramparts almost 65 years ago and have seen major changes to its condition since then.

"Weston-super-Mare's most important archaeological feature – and what could be a wonderful



Find out where North Somerset's conservation areas and listed buildings are at www.n-somerset.gov.uk/heritagemap



heritage



recreational amenity for all – needs care and attention.”

Volunteer Debbie Marriott said: “I won’t forget the excitement of uncovering and clearing my first storage pit, which was totally hidden in brambles.

“We are removing some quite dense undergrowth outside the Glade and can see the amazing views, showing exactly why the hillfort was built here.”

North Somerset Council’s senior archaeologist Cat Lodge said: “We would like to thank all volunteers who continue to work hard and support the project.”

North Somerset Council has now created a conservation management plan for the site.

This document will be used as part of a bid to the Heritage Lottery Fund.

Other plans include creating interpretation boards and signage, as well as research projects to learn more about the people who lived there more than 2,000 years ago.

Find out more about the history of Worlebury hillfort and read the management plan at www.n-somerset.gov.uk/hillfort



If you’re interested in volunteering at the site, email Cat Lodge at dm.archaeology@n-somerset.gov.uk or contact the group on Facebook

[worleburyhillfort](https://www.facebook.com/worleburyhillfort)

Heritage forum goes from strength to strength



Are you a member of a local history group? Would you like to join a forum to share ideas?

History, archaeology and heritage groups within North Somerset are now sharing information and advice thanks to a new forum.

North Somerset Heritage Forum was set up in 2017 by officers from North Somerset Council for like-minded people to get together and share ideas.

The first event was held in Weston-super-Mare and topics included collaboration projects, archiving, information sharing and the council’s heritage projects.

The second forum was held in Nailsea’s Tithe Barn and the third was held on Clevedon Pier. Thanks to Nailsea Town Council and Clevedon Pier for providing these venues free of charge.

Maggie McCarthy, from Banwell Society of Archaeology, said: “The forum helps me learn more about archaeology and local history, with tips and sources from other societies and how they have overcome problems.

“My love of local history is very important to me – to protect and preserve our heritage for future generations to enjoy and learn about how their ancestors lived and worked.”

Raye Green, from Worle History Society, said: “The forum provides us all with a great opportunity to get together with like-minded people.

“We share ideas and pass on information.”

To find out more about the forum or other volunteering opportunities, email dm.archaeology@n-somerset.gov.uk



Is now the time to find your new career in care?



Are you looking for a change of job or a second career before retiring? Are you a new parent wanting to return to work? If any of these apply, a rewarding career in care could be for you – and you could receive a bonus to boot.

There are many roles to choose from within the health and social sectors, such as personal care, helping with domestic jobs, helping people access services in their community, and many more.

To encourage more people into the field, a bonus payment equivalent to one week's average pay will be paid every six months to employees of North Somerset Council's

strategic care providers – Alliance Living Care, Brunelcare and Notaro.

The Proud to Care bonus scheme is an incentive to recruit and retain more care workers and recognise the vital work they do in supporting some of North Somerset's most vulnerable residents.

Gerald Hunt, North Somerset Council's head of commissioning, said:

"We need more people locally to work in care jobs and help us to help people who can no longer look after themselves.

"Having high quality, accessible home care available in our communities also helps relieve some of the pressures on local health systems, particularly during winter.

"It means people who are able to return home from hospital can do so quicker, safe in the knowledge their needs will be met.

"Care workers can also play a vital role in reducing the number of unnecessary hospital admissions, ultimately freeing up hospital beds for those in greatest need."

The scheme is being funded by the government's additional social care investment, announced in autumn last year.

North Somerset Council received £924,000, part of which is being used to provide the Proud to Care bonus scheme.



Who gets the Proud to Care bonus?

Current and new employees of Alliance Living Care, Brunelcare and Notaro Homecare, after they've worked for their employer for six months.

How much?

The bonus payment will be equal to the employee's average weekly pay calculated over the six months (minus any mileage claims). It is paid every six months.

Find out about the Proud to Care bonus scheme and search and apply for jobs at www.n-somerset.gov.uk/proudtocare



Shared Lives carer Mary Cassidy and her partner John Gow

Help make a valuable difference to a vulnerable person's life



Would you like to make a valuable impact on a vulnerable adult's life and help develop their confidence and independence?

North Somerset Council's Shared Lives scheme needs more people to provide a welcoming home for adults who have a learning disability or other health or sensory disability.

The scheme sees carers sharing their home, family life, interests and skills with someone who needs some help and support to live a fulfilling life.

Carers receive a fee for the support they provide, whether long-term, short breaks or day support, helping the person access and integrate with the wider community.

This can be flexible to meet the needs of the family or the person's availability.

Mary Cassidy and her partner John Gow, who live in Weston-super-Mare, have been Shared Lives

carers in North Somerset for three years.

Mary has diverse experiences in care and had been a Shared Lives carer for the previous seven years when she lived in West Sussex.

She now provides day support and short breaks for several adults with learning differences and disabilities on a regular basis.

Mary said:

"I wouldn't do anything else. The people you have become family."

"When I get to know the people I'm supporting, I like to make sure we provide some personal touches, such as pictures, bedding and mugs

to help them feel like it's their own home."

She also helps them develop independent living skills, such as cooking.

Mary added: "I would recommend it to anyone who feels they can provide a home and change the lives of others."

Shared Lives manager Amie Sutherland added: "We have a fantastic group of carers who are making a real difference to people's lives."

Carers come from a wide range of backgrounds and family circumstances. Extensive training and on-going support is provided.

More people are needed to become Shared Lives carers to help expand the service.

To find out more call **01275 888 368** or email sharedlives@n-somerset.gov.uk



New community learning courses for the New Year

Are you or someone you know struggling to improve your employability, health, wellbeing and confidence?



Free or low-cost courses are run by North Somerset Council's community learning team for people aged 19 or over.

New courses are now starting this month, and might appeal to people who have dyslexia, drug or alcohol issues, mental health issues, learning difficulties, physical disabilities or more.

David attended mindfulness, IT and hospitality courses. He said: "People don't realise how many services are out there.

"Everyone I was working with was brilliant. I'm telling everyone now – you've got an opportunity. Go and sort it out."

Aspasia attended ESOL (English for speakers of other languages) and event and project management courses.

She said: "I am so grateful for the opportunity you gave me to meet great people and to improve my English."

Sabine has completed building self-confidence, social media and IT courses. She said: "I feel like I am surrounded by friends, I haven't met anyone who's not nice and compassionate."

Upcoming courses and start dates

Personal development:

- Mindfulness – Wednesday, 23 January
- Anger management – Wednesday 23 January
- British Sign Language – Friday 25 January
- Woodwork for women – Friday 1 March

Functional skills:

- English literacy – Monday 14 January
- Brush up maths (pre-entry numeracy) – Monday 14 January
- ESOL (English for speakers of other languages) – Monday 14 January (in Weston-super-Mare, Clevedon and Portishead)

Employability courses

- IT – Monday 14 January
- Care Academy – Monday 21 January
- Becoming your own boss (introduction to self-employment) – Thursday 31 January
- Finding work in cleaning – Tuesday 5 February
- Introduction to event and project management – Monday 25 February
- Gardening projects – April 2019

Future courses (contact community learning for start date)

- Introduction to childcare (Level 1)
- Make money on blogging
- Office skills (in Clevedon)
- Social media for self-employment

To sign up to a community learning course, contact the team on **01934 426 196** or community.learning@n-somerset.gov.uk

Volunteers are also needed to help with basic admin tasks. Contact the team if you are interested



Get vocal, be heard

Listening to residents' views is an important part of the democratic process and North Somerset Council welcomes ideas to make things better.

While the council can't act on every suggestion, it listens to feedback and makes changes where possible.

You said:

People continue to be inconsiderate when parking on the Ashlands Estate in Portishead and it makes it difficult for larger vehicles to get through. Delivery vehicles, emergency vehicles, waste collection lorries and buses have all experienced problems, with public transport in particular being cancelled on occasion.

We did:

Installed yellow lines on Newfoundland Way and Phoenix Way on a trial basis. The mixture of double and yellow lines aims to stop inconsiderate parking and keep traffic flowing around the estate.

Where the lines were implemented, notices were attached to street lights informing residents on how to comment. At the end of the six-month trial period any improvements required as a result of comments will be considered and implemented where practical.

Parking attendants and the local police will be monitoring the situation with fines issued for drivers ignoring the restrictions.

Comment on council consultations

Have your say on North Somerset Council's policies by taking part in consultations.

All consultations are listed at www.n-somerset.gov.uk/consult

Sign up online to receive email alerts when new consultations are opened.

If you can't get online at home, posters are put up at the beginning of every month in all North Somerset libraries and council connect points, such as the Castlewood office in Clevedon, to publicise open consultations and how to take part.



Your views

Send your items to
Editor, North Somerset Life
North Somerset Council
Floor 1, Town Hall
Weston-super-Mare, BS23 1UJ
or email editor@n-somerset.gov.uk

@NorthSomersetC

NorthSomersetCouncil

NorthSomersetLife

Items submitted without a valid name and address will not be considered for publication. Please tell us if you do not want your details published. Due to space restrictions letters may be edited.

Dear Editor,

I was astounded to read NSC is planning a £80m bid for a bypass for Banwell and 'improvements' to the A38.

Banwell could be improved by simply routing all HGVs up the A370 (except school coaches during term time). The A38 does not need significant improvements, apart from sorting the dysfunctional traffic lights at Bristol Airport.

My biggest concern is NSC planning to first bid for Government money, then consult. Surely this is the wrong way round? I am sure there are many who would want other priorities coming well before the council's apparent aim of destroying countryside.

Jeremy Comley MA, Churchill

Editor's response:

If successful, the bid would fund school places and improvements to transport infrastructure in and around Banwell, as well as a route around the village.

Potential improvements to the A38 would be looked at in the future, as the council strengthens Weston to Bristol links and makes sure the transport network can cope with increasing demand.

Rerouting HGVs may ease pressure on one road but move it to another. The council must look at the entire network and impact of any changes across the system.

The concept and location of a bypass for Banwell has featured in the Local Plan for the last few decades and, as such, been subject to many rounds of public consultation.

There will be more consultation about the road design and school places, and the Local Plan will have another round of public consultation this autumn.

You can also now comment on the Joint Local Transport Plan. See page 5.

Correction

In the last edition we gave the Wessex Water number to report water leaks. This is wrong – report any leaks in North Somerset to Bristol Water on **0800 801 011**. Apologies for the confusion.

North Somerset Life is on Instagram. Tag [#northsomersetlife](https://www.instagram.com/northsomersetlife) to share your photos



@LZ.BRISTOL



@JADIEMARIE



@DRJONREES



Many topics are covered on Twitter and Facebook and last month these issues were raised...

Can broken fairy lights be recycled?

North Somerset Council:

Yes, you can put broken fairy lights in your recycling box. Make sure you wrap them up or put them in a plastic bag.

Who do I report a broken streetlight to? We had a power cut a few weeks ago and there's a streetlight that hasn't turned back on since.

North Somerset Council:

You can report a faulty streetlight online at www.n-somerset.gov.uk/connect



North Somerset Life

North Somerset Life is published by North Somerset Council.

For advertising and sponsorship opportunities contact Will Jenkins: **01934 426 474** or **will.jenkins@n-somerset.gov.uk**

For editorial contact **editor@n-somerset.gov.uk** or **01275 884 139**

The next edition will be delivered from: **Monday 4 March 2019**

Your copy should be delivered with your post unless you use Royal Mail's opt-out service to block unaddressed mail.

View back issues at **www.n-somerset.gov.uk/nsl**

For free regular emails about news, events and services subscribe at **www.northsomersetlife.co.uk**



Coming next issue:

- Heritage Action Zone in Weston-super-Mare
- Library service in Long Ashton
- Crime prevention advice

JANUARY 2019

Date	High water		Low water		High water		Low water	
	Time	Height (M)	Time	Height (M)	Time	Height (M)	Time	Height (M)
	AM				PM			
1 Tue	02:34	9.88	08:42	2.28	15:05	10.10	21:13	2.23
2 Wed	03:43	10.12	09:42	2.13	16:10	10.34	22:11	2.05
3 Thu	04:42	10.53	10:36	1.89	17:06	10.66	23:01	1.80
4 Fri	05:31	10.92	11:22	1.65	17:53	10.95	23:42	1.59
5 Sat	06:14	11.24	-	-	18:35	11.16	12:00	1.49
6 Sun	06:53	11.44	00:18	1.46	19:13	11.28	12:35	1.39
7 Mon	07:31	11.52	00:52	1.40	19:49	11.28	13:09	1.36
8 Tue	08:04	11.46	01:25	1.41	20:21	11.18	13:43	1.39
9 Wed	08:37	11.29	01:56	1.49	20:52	10.99	14:16	1.48
10 Thu	09:09	11.03	02:27	1.62	21:23	10.72	14:49	1.62
11 Fri	09:41	10.68	03:00	1.78	21:55	10.36	15:25	1.81
12 Sat	10:15	10.25	03:34	2.00	22:31	9.93	16:02	2.06
13 Sun	10:53	9.79	04:14	2.25	23:10	9.51	16:45	2.33
14 Mon	11:37	9.40	05:00	2.52	-	-	17:37	2.59
15 Tue	00:00	9.17	06:00	2.78	12:37	9.16	18:43	2.80
16 Wed	01:11	9.04	07:14	2.96	13:59	9.25	20:08	2.83
17 Thu	02:35	9.37	08:49	2.79	15:15	9.81	21:27	2.38
18 Fri	03:46	10.13	09:56	2.20	16:20	10.58	22:24	1.80
19 Sat	04:47	10.97	10:51	1.64	17:19	11.33	23:20	1.32
20 Sun	05:44	11.71	11:47	1.18	18:14	11.95	-	-
21 Mon	06:37	12.28	00:13	0.91	19:06	12.40	12:39	0.78
22 Tue	07:25	12.67	01:03	0.59	19:54	12.67	13:28	0.49
23 Wed	08:12	12.88	01:50	0.40	20:40	12.73	14:17	0.36
24 Thu	08:58	12.85	02:38	0.38	21:25	12.51	15:06	0.43
25 Fri	09:44	12.53	03:25	0.54	22:11	12.01	15:52	0.69
26 Sat	10:31	11.94	04:11	0.88	22:58	11.30	16:38	1.09
27 Sun	11:18	11.17	04:57	1.32	23:46	10.51	17:23	1.58
28 Mon	-	-	05:46	1.81	12:10	10.39	18:15	2.08
29 Tue	00:40	9.80	06:43	2.32	13:08	9.73	19:16	2.55
30 Wed	01:45	9.35	07:55	2.68	14:18	9.36	20:32	2.76
31 Thu	03:01	9.31	09:08	2.65	15:37	9.44	21:38	2.57

FEBRUARY 2019

Date	High water		Low water		High water		Low water	
	Time	Height (M)	Time	Height (M)	Time	Height (M)	Time	Height (M)
	AM				PM			
1 Fri	04:14	9.73	10:08	2.32	16:45	9.89	22:35	2.18
2 Sat	05:10	10.33	10:58	1.90	17:36	10.44	23:20	1.77
3 Sun	05:57	10.87	11:40	1.56	18:20	10.86	23:59	1.48
4 Mon	06:38	11.23	-	-	18:58	11.12	12:18	1.36
5 Tue	07:13	11.42	00:35	1.33	19:31	11.26	12:53	1.25
6 Wed	07:46	11.51	01:09	1.27	20:02	11.34	13:28	1.20
7 Thu	08:16	11.54	01:42	1.24	20:32	11.38	14:01	1.18
8 Fri	08:47	11.49	02:15	1.26	21:01	11.30	14:34	1.22
9 Sat	09:19	11.28	02:46	1.35	21:32	11.02	15:08	1.38
10 Sun	09:51	10.87	03:17	1.56	22:05	10.57	15:40	1.65
11 Mon	10:23	10.36	03:48	1.84	22:38	10.07	16:13	1.95
12 Tue	11:00	9.86	04:23	2.13	23:17	9.62	16:52	2.23
13 Wed	11:48	9.42	05:12	2.42	-	-	17:47	2.53
14 Thu	00:15	9.22	06:17	2.74	13:03	9.12	19:05	2.84
15 Fri	01:46	9.11	07:57	2.95	14:37	9.34	20:55	2.71
16 Sat	03:14	9.67	09:31	2.44	15:56	10.10	22:03	2.06
17 Sun	04:27	10.59	10:33	1.78	17:05	11.03	23:06	1.44
18 Mon	05:31	11.53	11:37	1.15	18:02	11.88	-	-
19 Tue	06:24	12.30	00:02	0.83	18:53	12.51	12:29	0.57
20 Wed	07:13	12.84	00:51	0.34	19:40	12.90	13:17	0.16
21 Thu	07:58	13.14	01:37	0.03	20:24	13.04	14:02	-0.03
22 Fri	08:41	13.16	02:23	-0.03	21:06	12.87	14:47	0.06
23 Sat	09:24	12.84	03:06	0.17	21:47	12.34	15:29	0.41
24 Sun	10:05	12.16	03:44	0.59	22:28	11.52	16:06	0.93
25 Mon	10:46	11.24	04:22	1.15	23:09	10.56	16:42	1.52
26 Tue	11:29	10.26	05:00	1.75	23:54	9.66	17:21	2.11
27 Wed	-	-	05:45	2.35	12:20	9.37	18:08	2.69
28 Thu	00:54	8.94	06:46	2.92	13:29	8.76	19:25	3.19

Tide timetables for Weston-super-Mare

Weather conditions which differ from the average will have an effect on the differences between predicted and actual tide times.

Strong winds can hold the tide in or push the tide out. Air pressure can also cause fluctuations in predicted levels.

Tidal predictions for Weston-super-Mare have been computed by the Proudman Oceanographic Laboratory.

Copyright reserved.

Tide facts

Approximate high water times at:
Clevedon: **10 min** • Portishead: **18 min**
later than Weston-super-Mare.

www.n-somerset.gov.uk/tidetimes

Adult Part-time Courses



Gain the skills and qualifications you need to reach your potential.

Starting this **January**, Weston College is offering a range of adult part time and evening courses, from hobby and leisure to recognised qualifications to **further your career**.

Areas include:

- Construction and Building Services**
- Counselling, Health and Social Care**
- Creative Industries**
- Engineering**
- Hair, Beauty and Barbering**
- Hospitality**
- Motor Vehicle**
- Languages**
- Sport and Public Services**
- Pre-employment**
- Access to HE**

For more information please contact
Weston College on **01934 411 411**

View the adult part time course guide at
www.weston.ac.uk/adult-part-time-courses-2019

Flexible Learning

Weston College has developed a range of **blended learning courses** delivered through our online digital platform.

Following an initial face to face induction and enrolment, the courses can be **studied remotely**, with the support of an online tutor. Qualifications currently available are:

- Enterprise Skills**
- Leadership and Management**
- Understanding Autism**
- Customer Care in a Health and Social Care Environment**
- Maintaining a Tenancy**
- IT User Skills**

To sign up, or to view start dates, please visit:
www.weston.ac.uk/flexible-learning-fund

For more information
please contact
Weston College on
01934 411 411

