

# NORTH SOMERSET

ISSUE 134 – MARCH/APRIL

# LIFE

## Volunteers spruce up Portishead

[www.n-somerset.gov.uk](http://www.n-somerset.gov.uk)

 @NorthSomersetC  NorthSomersetCouncil



# WESTON AIR FESTIVAL



Saturday 17 and Sunday 18 June 2017



Beach Lawns, Weston-super-Mare 10am – 6pm

📧 @WestonSeafront

📌 westonseafont



[www.westonairfestival.com](http://www.westonairfestival.com)



## Dear reader,



At the time of writing, proposals for next year's budget have just been published. In all my years of agreeing budgets, this has been by far the most difficult to resolve. It comes on top of £60m savings already forced upon us over the last seven years and the fact that we will have an overspend in the current year.

Despite very hard decisions, this year our projected overspend includes £7m in the care services and, while we have made savings on other services, we will still be overspent by £2.5m overall. This makes the start of the next financial year very difficult. Demand for care services continues to grow and we have already looked to save on all other services.

We have accepted the Government's three per cent social care levy ring fenced for adult care but that will not be enough. This is a national problem which cannot be fixed by local council tax but successive governments have not tackled the growing problem. As we get less from government each year, and we are capped on council tax increases anyway, it has to come from the national budget. Surrey announced that they would have a referendum on putting up their council tax by 15 per cent and some residents suggested we do the same. I suspect it would be very unpopular and Surrey have now cancelled the idea. When a similar referendum was held in Bristol a few years ago, it was overwhelmingly rejected. Budgets are not just once a year, it is a daily and weekly task for all departments, and there are bound to be more changes throughout the year.

We also face a £1.7m increase in the waste contract and another £700,000 overspend due to the sheer increase in the amount of waste we have to dispose of. Despite having one of the best recycling rates in the country, we still have to pay the government a fine of £2.5m for what we still have to send to landfill, money that could be invested in better disposal.

The government white paper on housing was disappointing as it missed an opportunity to force developers to get on and build the homes they already have permission for. For example, their decision to reduce the time allowed between getting planning consent and starting building, from three years to two, misunderstands the problem. It is not when developers start the building that is the problem, it is how long they take to finish the buildings. Allowing developers to build hundreds of homes without any local facilities is the problem, building homes where developers have bought land rather than where communities want them is the problem. Listening to local people is the answer.

Councillor Nigel Ashton, Leader of North Somerset Council

## Contents

- 4 News update
- 10 Portishead is blooming
- 12 New recycling and waste service starts
- 14 Changes coming to libraries and children's centres
- 20 Could you foster?
- 22 Weston Hospital launches public engagement
- 24 Walk – Stroll around Shipham
- 30 Council tax set for year ahead
- 34 Purple Flag retained for Weston
- 36 Protect your home against burglars
- 38 Stay safe online
- 47 Contact details



This publication is available in large print, Braille or audio formats on request. Help is also available for people who require council information in languages other than English. Life editor: 01275 884 139

## Funding secured to boost tourism

North Somerset has secured £150,000 from the Arts Council to help promote the area and encourage more national and international visitors.

Cultural Destinations is an initiative that was developed by the Arts Council following a three-year partnership with VisitEngland, the national tourist board.

The programme aims to increase the reach of those experiencing arts and culture and to encourage the public and private sector to work together to support the growth of the local visitor economy.

Round Two of Cultural Destinations has awarded £3,288,600 to 16 projects to enhance local cultural offerings and encourage visitors to areas as far reaching as the Isles of Scilly and the Lake District.



Bristol and Bath Cultural Destinations, which was successful in Round One of the project, is one of the former successful bids.

This additional £150,000 funding will now extend the project into South Gloucestershire and North Somerset over two years from January 2018 to December 2019.



## New pound coin to enter circulation

The new £1 coin will enter circulation this month with 1.5 billion coins being produced by The Royal Mint.

The final specification of the coin and method of introduction were decided after a 10-week public consultation.

The new coin has a number of features that make it much more difficult to counterfeit. It is 12-sided and made of two metals. The outer ring is gold coloured (nickel-brass) and the inner ring is silver coloured (nickel-plated alloy).

The coin also includes an image like a hologram that changes from a £ symbol to the number 1 when the coin is viewed from different angles.

The existing £1 will be withdrawn on 15 October but can continue to be deposited directly into a bank account following that date.

[www.thenewpoundcoin.com](http://www.thenewpoundcoin.com)







Fifty-two countries will come together on Monday 13 March to celebrate Commonwealth Day.

This year's theme is a peace-building Commonwealth and the day is an opportunity for individuals, communities and organisations to promote the Commonwealth's

shared values of peace, democracy and equality and celebrate the association's rich diversity.

The day will be marked across the globe by a range of activities, including a multi-faith service at Westminster Abbey in London. This service is traditionally attended by Her

Majesty The Queen, the Head of the Commonwealth. High Commissioners, the Commonwealth Secretary-General, dignitaries from across the Commonwealth, senior politicians and 1,000 school children will also join the celebrations at Westminster Abbey.

## Have your say on new orders

Residents in North Somerset are being asked for their views on proposed orders to prevent individuals or groups of people committing anti-social behaviour in public places.



The new Public Space Protection Orders replace existing dog control orders, designated public protection orders that help the police tackle alcohol-related anti-social behaviour and local byelaws where appropriate.

North Somerset Council is currently consulting with residents, the police, town and parish councils and other key stakeholders about the proposed orders.

Any agreed are due to come into force by the end of October.

The eight-week consultation runs until Friday 31 March. Visit [www.n-somerset.gov.uk/pspo](http://www.n-somerset.gov.uk/pspo) or call Council Connect on 01934 888 802 for a paper copy.

COMING TO  
**THE BAY (TROPICANA), WESTON-S-M**

THE BLUEBIRDS, STORYTREE & FOUR OF A KIND PRESENT

**NZINGABETH!**  
or  
*When Ana Met Virginia*

Sat 11th Mar.....7:30 pm Tickets.....£14 (£8)

TICKETS FROM THE BAY CAFE, TROPICANA & TOBACCOFACTORYTHEATRES.COM  
FOR MORE DETAILS (INCL FULL LIST OF VENUES) VISIT  
**WWW.NZINGABETH.COM**

LOTTERY FUNDED | ARTS COUNCIL ENGLAND | Sponsors and donors include: The Bluebirds | storytree | mind

## Volunteer opportunities in North Somerset's open spaces

Plenty of opportunities exist in North Somerset for green-fingered people who would like to improve the area's open spaces.

Volunteers work hard across the area and have made dramatic improvements in the last year.

In Clevedon, the Clevedon Woodcutters have started restoring the open grassland on Dial Hill by cutting back encroaching scrub, removing invasive Sweet Pea and taking out some of the self-seeded ash saplings.

This winter has also seen the team remove a large section of Sumach, a garden escapee, which was starting to dominate an area of the hill.



Grove Park in Weston-super-Mare has seen the introduction of a new Friends group who have started clearing the rockery. The Friends will also be helping to manage Jill Dando's Garden.

For more information on volunteering activities in your area contact Samantha Phillips: 01275 888 930



## Mock emergency for community response volunteers

A mock emergency will take place in North Somerset this month so volunteers in the Community Resilience network can test out what they've learnt so far.

The table-top exercise will see volunteers consider the impacts of a major power failure as a result of severe weather.

They will examine the impact on their communities and determine how they would respond alongside emergency services.

Volunteers who have already completed general and role-specific training, will be taking part.

Any North Somerset resident over the age of 14 can join the Community Resilience programme, no matter what their skills, availability or previous experience is.



[www.communityresilience-ns.org.uk](http://www.communityresilience-ns.org.uk) or call 01934 426 322

🐦 @CommResNs\_News • 📱 search for Community Resilience North Somerset

## New funding for people with learning disabilities

People with learning disabilities in North Somerset are set to benefit from £213,000 of funding to help them live more independently in their own homes thanks to a successful bid.

North Somerset Council secured the funding from the Government's Department of Health.

The money will go towards four projects which will support people with learning difficulties to gain

as much independence as possible, through accommodation and use of assistive technology.







St Monica Trust

## Enjoy a vibrant retirement lifestyle

In the heart of North Somerset is **Sandford Station**, a lively retirement village with a great community spirit. The excellent facilities and staff provide the perfect retirement lifestyle.

To book a personal tour or to simply find out more call **0117 919 4262**. See our latest video of life at Sandford Station just type **ow.ly/XSYGw** into your browser.

Registered Charity 202151

# Home improvements available from not-for-profit company

Older people and those with disabilities can get help to improve their living conditions from a not-for-profit company.

WE Care and Repair offer a team of trusted staff to carry out essential repairs ranging from lock problems to a leaking roof.

They can also assist with the installation of safety improvements around the home including handrails, stair lifts and bathroom adaptations.

The company also holds a list of reliable independent tradespeople who can help with plumbing, electrical or other specialist requirements.

WE Care and Repair has over 30 years' experience in its field.

For more information call 0300 323 0700 or visit [www.wecr.org.uk](http://www.wecr.org.uk)



## New chamber choir finds its voice

Experienced and passionate singers are being sought for a new chamber choir.

Costanzi Consort specialises in performing beautiful unexplored early music to a very high standard.

Any potential singers are invited to a taster day and singing session on Sunday 2 April from 2pm at All Saints Church in Weston-super-Mare. An audition can then be held that evening or on Monday 3 April.

Costanzi Consort sings a wide variety of music from 1500 to the present day but focus on lesser known composers of the 17th and 18th centuries.

The musical director of Costanzi Consort is Peter Leech. Peter is an award-winning conductor and a specialist scholar in music of the late Renaissance and Baroque periods.

Rehearsals are normally held on Monday evenings from 7.45pm to 10pm in Weston-super-Mare and on the day of concerts.



For more information about the choir visit [www.costanziconsort.org.uk](http://www.costanziconsort.org.uk)



## Anyone for croquet?

Weston-super-Mare Croquet Club is looking for new members of all ages and abilities.

The club, which relocated to Bleadon in 2008, now has three full size croquet lawns, car parking, a club house and landscaping, all set in a beautiful location.

Association croquet and golf croquet are played from April until the end of September and the club has several teams who successfully compete in the South Western Federation Croquet League.

But the primary reason for the club's success is that members enjoy meeting, competing and having fun in a friendly environment. They also have a busy social calendar.

Coaching, by arrangement, is given to newcomers and the club is particularly keen to introduce youngsters to the sport. There is now a junior section and youth section with players ranging from eight to 18.

For more information about joining the club call 01934 522 726.



# Bake for Heroes

Help for Heroes is asking North Somerset residents to dust off their aprons and get baking to raise lots of dough for wounded, injured and sick military personnel, veterans and their families.

People can take part in Bake for Heroes from 15 to 30 April and every slice sold makes a difference by raising money to help rebuild lives.

Suggested fundraising ideas include holding a tea and cake event at work, school, in your local community centre or simply inviting friends around for a slice of cake, a donation and a catch up.

People taking part can register and fundraising for the chance to win a Kenwood mixer and a free fundraising pack will be sent to every Bake for Heroes organiser to help make each event a success. The packs include collecting boxes, a sweepstake game, bunting, balloons and pricing stickers.

The winner of the Best Cake Competition in 2017 could win a stay in London, together with breakfast and afternoon tea, which has kindly been donated by the Bloomsbury Hotel.

People must be over 18 to enter and need to show that money has been raised at a Bake for Heroes event.



To register or for more information visit [www.helpforheroes.org.uk](http://www.helpforheroes.org.uk) or call 01980 846 459.

## A decade of healthy walking

North Somerset's Walking for Health initiative has celebrated its tenth anniversary.

The scheme, run by North Somerset Council, has provided short, sociable, walks to over 5,000 people and trained more than 250 local volunteers during that time to lead its weekly programme.

The nine local groups have found huge popularity through being incredibly friendly and a great way to stroll and chat, benefiting both physical and mental health for those involved.

Walking for Health is a national campaign to support people to get active and stay active led by local volunteers who provide crucial support



within the community, encouraging people to walk on a regular basis.

North Somerset's programme includes walks in Clevedon, Nailsea, Portishead, Weston-super-Mare, Winscombe and Yatton, as well as a new walk recently launched in Long Ashton.

To get involved as a walker or volunteer visit [www.n-somerset.gov.uk/healthwalks](http://www.n-somerset.gov.uk/healthwalks)

For more information call North Somerset Council's Sport and Active Lifestyles Team on 01275 882 730 or email [go4life@n-somerset.gov.uk](mailto:go4life@n-somerset.gov.uk)





# Fabulous floral displays in Portishead

Award-winning flower displays have made Portishead look fabulous for more than 20 years and now the town is competing to be named the best in the country.

Volunteer group Portishead in Bloom formed in 1996 and has worked hard over the last two decades to make the town a colourful and pleasant place to live and work.

Portishead has now been invited to take part in the national Champion of Champions category in the Royal Horticultural Society's Britain In Bloom competition.

Judging will take place this summer with gold, silver gilt, silver and bronze awards up for grabs.

The town was invited to take part in this prestigious category because of the amount of gold awards it has previously won – nine in the South West competition and three in the nationals.

Chairperson Sandy Tebbutt said: "Portishead in Bloom works hard all year round to keep the town looking beautiful so we were delighted to be invited to enter the Champion of Champions category.

"We are fortunate to have wonderful scenery and interesting estuary views so we do our best to enhance what nature has provided us with."

Portishead in Bloom was established after North Somerset Council invited the town council to form a group to enhance the town's floral arrangements.

North Somerset Council has continued to support the In Bloom groups throughout the area.

It supports new projects, improves existing ones, and offers advice and assistance where needed so high standards can be achieved in parks and open spaces.

Sandy said: "We are very fortunate to have the backing of North Somerset Council and Portishead Town Council who do everything they can for us in these cash-strapped times."





Portishead was awarded its first gold In Bloom award in 2008 and has maintained high standards since then.



It has represented the South West in the national competition four times and last year won gold in the large town category.

As well as gardening, activities include planting native bulbs with nursery children; painting street furniture with help from the local Sainsbury's; a big picnic in July; apple pressing days at Weston-in-Gordano's orchards; fundraising through bucket collections; and having stalls at Portishead Horticultural Society's country fair in the summer and annual Victorian evening in December.

The first open gardens weekend took place in 2003 and it has now become a popular annual event to help raise funds.

There is a small core team who meet once a month and a group of 'friends' who give extra support.

Sandy said: "Quite often we have 20 people on our work parties which means pruning, hoeing and dead-heading is dealt with quickly.

"These work parties can help people who are looking for exercise, fresh air and companionship, so we welcome newcomers with open arms."

Each spring two volunteers visit all businesses and shops around the town to get orders for the summer tubs.

Each business is given a watering can and instructions about how to care for their tubs during the summer.

Banners, which were originally designed by local schoolchildren, are then put up along the High Street in late May.

A team of local seamstresses make or mend the banners during the previous winter.

New banners this year will feature marathon runner Ben Smith and Olympic gymnast Ruby Harrold.

Sandy added: "We get tremendous support from not only the town's businesses, but also many residents and visitors.

"We always score top marks for our work in the community and on more than one occasion have been given a Pride in Place award."

Edward McKay, from North Somerset Council's green spaces team, said: "We would like to thank the In Bloom groups for all of their hard work and for the added value they give in their particular area.

"All their time is volunteered and their hard work and dedication has a huge impact in making towns and villages look beautiful throughout the year for everyone to enjoy."



[www.portisheadinbloom.org.uk](http://www.portisheadinbloom.org.uk)

To find out more or how to get involved contact Sandy Tebbutt on [sandytebbutt@hotmail.com](mailto:sandytebbutt@hotmail.com)



# Improvements to recycling an



Recycling and waste collections in North Somerset have now changed as an improved service gets under way.

Biffa took over the contract on Wednesday 1 March and information packs have been posted to all residents to make sure everyone knows about the changes.

Here's a recap of what's happening....



Stickers to help box sorting

Box 1	 household plastic packaging	 household metal packaging	 mixed paper	 mixed textiles and clothes	 spectacles
	 cardboard	 cartons	 mixed glass bottles and jars	 small appliances	 batteries and mobile phones

Kerbside collection boxes should be organised slightly differently to make better use of the available space.

Plastic and cardboard should be separated between the two boxes and a second different-coloured box

will also be available to make sorting easier.

These new boxes aren't being rolled out immediately so you can carry on using your existing green ones until you need a replacement.



# and waste service now here



## Hard plastics accepted

Items made from hard plastic – such as storage boxes, watering cans and toys – can now be taken to recycling centres. This will help create more space in your refuse bin.

## Small electrical equipment

Small electrical items (up to the size of a small toaster) will now be collected from the kerbside.

## Garden waste

Registration for the new garden waste service costs £25 for each bin registered to your property.

Existing green bags will no longer be collected. Unless you have a green bin, it is now your responsibility to get rid of your garden waste.

It can still be taken to recycling centres free of charge, and there's garden waste information about home composting on page 40.

[www.n-somerset.gov.uk/gardenwaste](http://www.n-somerset.gov.uk/gardenwaste)

## Recycling centre changes

Improvements are being made to North Somerset's three recycling centres as part of the new contract with Biffa.

### New opening hours

Opening hours have changed. Summer season hours have started at Weston-super-Mare and Portishead recycling centres, and will start on Saturday 1 April at Backwell.

Find the new opening hours at [www.n-somerset.gov.uk/hwrc](http://www.n-somerset.gov.uk/hwrc)

### Charging small businesses

Small and medium-sized businesses can use the recycling centres at certain times for a fee. This will reduce the volume of traffic visiting the centres at peak times.

## Charges for construction and non-household waste

Disposing of certain types of construction waste now comes with a charge. This includes hardcore/rubble\*, asbestos, plasterboard, tyres and gas canisters.

Payment is by card on arrival (no cash payment).

\* free allowance of one bag per visit

### Webcams

Check how busy a recycling centre is before you leave home by viewing it through a webcam on the council's website. This new feature will lead to shorter waiting times as people can avoid the queues.

[www.n-somerset.gov.uk/recycling](http://www.n-somerset.gov.uk/recycling)

# Changes coming to libraries and children's centres



Changes are coming to some libraries and children's centres in North Somerset to improve facilities for residents and save money in the long-term.

The changes follow a major review of buildings and services run by North Somerset Council, called the Community Access Review.

It focusses on the area's 14 children's centres and 12 libraries, ensuring they are fit-for-purpose, in the right place, cost-effective, can meet the demands of new technology, and the current and future needs of residents.

Seven localities were looked at in the first stage last year – Congresbury, Long Ashton, Pill, Weston South (Bournville and Oldmixon), Winscombe, Worle and Yatton.

Mandy Bishop, an assistant director at North Somerset Council, said: "Doing nothing is not an option.

"The current services do not reflect changes in use, or support what, when and how customers want to access our facilities and services."

The majority of changes are due to be in place by July and this first phase is expected to deliver annual savings of £500,000 by 2018/19.

## What is happening where?

### Congresbury

Congresbury parish council will run the library service with support from community volunteers.

North Somerset Council will provide a £3,300 one-off investment to support the transition, and the parish council is considering raising the annual precept to make it sustainable.

Residents will continue to have access to the full LibrariesWest stock.



### Long Ashton

Separate library and children's centre buildings will be retained but a review will take place to support a more integrated approach.

There will be a £25,000 investment in self-service facilities and £10,000 to upgrade data lines at the library.

Self-service will mean the library can open during evenings and weekends.

Staff will remain on site at the busiest times though, and residents and organisations will be informed about staffing arrangements.





## Pill

Both the library and children's centre will be housed in the existing library building and a review will take place to support more integration.

Up to £91,000 will be spent refurbishing the building and immediate outside area.

As well as this, £25,000 will be spent on self-service facilities so the building can open during evenings and weekends.

Questions from residents about the impact on children's centre activities, the need for an outdoor play area, and parking around the library will all be addressed during the refurbishment.

## Weston South

Both Oldmixon family centre, and the children's centre and library based in the Healthy Living Centre, will remain where they are.

A review will take place to reduce overheads and ensure a more co-ordinated approach.

In addition, £20,000 will be spent refurbishing both buildings, as well as £10,000 IT infrastructure upgrades at Oldmixon.

A library access point with a small book stock will also be installed at the Oldmixon site.

Changes to staffing arrangements will be clearly communicated with residents and disabled people will continue to receive support from qualified staff.

## Winscombe

A £25,000 investment will mean the library can be remodelled and self-service facilities installed so the building can open during evenings and weekends.

## Worle

Worle's library will move into Milton and Old Worle children's centre and it will transform into a co-located hub.

Local people have raised concerns about the reduced space by both services being in the same building.

However, new technology will mean both library and children's centre users will be able to access the building for up to 69 hours a week – an increase of 92 per cent for library users.

Staff will be on-hand during the busiest times and for designated activities, and vulnerable and older people will continue to be supported.

The children's centre will have £167,000 investment to make it suitable for co-located services, with another £25,000 for self-service facilities.

There will be dedicated time for both library activities and children's centre activities during any week, following feedback from library users.

The refurbished building will be fully accessible, including enhanced signage and dropped kerbs. On-site parking will also be considered.

In addition, outdoor green space will be opened up for the whole community.

A new group will be formed so local people can have their say on future services and activities, including representatives from equalities groups and older people.

## Yatton

The existing library will have a £204,000 refurbishment so it can become a co-located base with the children's centre.

A review will also be carried out across the two services.

Accessibility will be improved when the existing lift is replaced with a suitable, fully-compliant one.

In addition, £25,000 will be invested in self-service facilities so the building can open in evenings and weekends.

## Access

A swipe card system could be introduced to allow access to selected libraries and co-located hubs during unstaffed hours.

Registered users would use their existing library cards to unlock the door.

The buildings will be monitored by CCTV and a contact telephone system will be available.

Announcements would be made to let people know when the building is due to close.

## What next?

The second phase of the review will look at Portishead, Clevedon, Nailsea and Weston Central.

Consultation will take place later this year, with any changes implemented this year and next.

For more information visit  
[www.n-somerset.gov.uk/car](http://www.n-somerset.gov.uk/car)



# Transforming the Italia



Funding has been secured to transform a key public space in the heart of Weston-super-Mare town centre.

Builders have been busy since January removing the old paving in the Town Square and Italian Gardens ready to create an attractive, open space at the northern end of the High Street.

The new square has been designed by Building Design Partnership (BDP), a major international practice of architects and designers.

Construction work is being carried out by local companies EJ McGrath and Skanska.

North Somerset Council secured the £1.28m funding for the work from the West of England Local Enterprise Partnership (LEP).

The LEP recognised that the enhanced square could give an economic boost to the High Street and surrounding businesses by increasing footfall in the area.

Pedestrian links between the square, seafront and High Street are being enhanced, creating an inviting continental-style square, which will encourage activities throughout the year.

Features such as state-of-the-art lighting and a water feature are being incorporated into the design to create a stimulating, safe and accessible environment for all.

The existing plane trees in the High Street and Italian Gardens will remain, and pine trees and Mediterranean-style planting will be added.

Local business owners and key stakeholders were consulted on the design.

Michael Sanders, joint landlord of the Imperial in South Parade, said: "This project will be a huge benefit to both the people of Weston and businesses in the area.



"It has been cleverly designed with the utmost thought to the heritage of the existing Italian Gardens and the town.

"It will help meet the needs of a modern town centre, providing an open safe place for both young and old, and is a welcome step towards regenerating the Town Square area."

This upgrade provides further momentum to Weston's town centre regeneration, alongside the redevelopment of Dolphin Square and Weston College's Law and Professional Services Academy at the Winter Gardens.



# n Gardens



Artist's impression of the finished Italian Gardens

## More town centre updates

### Creative Hub opening soon

Creative people who want a dedicated space to launch their start-up businesses can now register their interest in a new site in Weston-super-Mare's town centre.

The refurbishment of the Badger Centre in Wadham Street is progressing well and it will soon re-open as the Creative Hub.

Local entrepreneurs in creative and digital services who would like to take advantage of the facilities, services and support on offer can now register their interest.

The building will offer flexible space, meeting rooms and space for a gallery and pop up retail opportunities.

To find out more about the space available and to register your interest, email [hub.weston@n-somerset.gov.uk](mailto:hub.weston@n-somerset.gov.uk)

### Take a seat in the new Church Square

Pedestrian access along one side of Dolphin Square is being improved to create a pleasant place for people to sit or stroll.

Church Square will be created in Union Street, between the eastern side of the Dolphin Square leisure development and Emmanuel Church.

Developers McLaren Life are keen to improve the surrounding area and this new square is the result of a partnership between the church and developers.

Significant improvements will also come to Oxford Street when the pavements are widened to enhance the link between Dolphin Square and the High Street.

Oxford Street will become a 20mph zone with some speed humps approaching Dolphin Square, and the road surface will be raised to create a shared space area.

Work is due to start this month.

Artist's impression of the new pedestrianised space, at the corner of Union Street and Oxford Street



# Unique finds in Clevedon



Victoria Saunders of 19



Chloe Smirk and Alistair

A wide range of unique gifts, vintage homeware, stylish restaurants and more can be found in Clevedon's specialist shopping area.

Independent traders from Hill Road, Copse Road and Alexandra Road have branded the area 'Hill and Sea' to encourage people to think of the 70-plus shops, cafes, restaurants and pubs as belonging to one area.

A Sunday market launched last year to bring more people into these streets at the weekend and businesses are thriving.

Artisan shop 19, on Alexandra Road, opened in late 2013 and has established itself with its eclectic mix of homeware and vintage items.

The business is run by twin sisters Victoria and Becky Saunders and was set up with help from the Princes Trust and a grant through the Mary Portas High Street Innovation Fund.

Victoria said: "Things are going well and we've got an exciting year lined up."

Both sisters have a design background and they operate a studio at the back of the shop and hold regular workshops, such as chalk paint waxing techniques, paper cutting, lampshade making and paper flower making.

The shop is also an exclusive distributor of Annie Sloan chalk paint.

Victoria added:

*"It's great to feel part of a community and we want to promote that."*

"There is a good feeling among traders and we want to celebrate our area."

Also in Alexandra Road, a print and design company has expanded after taking over a former newsagents.

thatcopyshop took over the lease for the neighbouring Alexandra News store after it closed last April.





# on's Hill and Sea area



Air Sims of Books on the Hill



The team at thatcopyshop

The new space has now been sympathetically converted into an open meeting room and design studio.

Owner Jez Franklin has worked at the company for 13 years and said: "We're really proud of our new studio and the growing team is continuing to expand the creative services offered."

The company has also taken on a business and design apprentice through Weston College, and hopes to recruit two more employees by the end of the year.

thatcopyshop also offers a range of technical printing services, such as exhibition and display, photo and art printing, picture framing, plan printing and legal document management.

Alistair Sims runs independent bookshop Books on the Hill, in Hill Road.

He said: "Since we started just over two years ago, we always try to organise as many events as possible.

"We have a regular book club every month and have expanded with a range of specialised loose leaf tea.

"The shop is also known for being dyslexic-friendly.

"In the future we intend to go to more literature conventions throughout the country and bring part of the shop online."

[www.everythingclevedon.co.uk](http://www.everythingclevedon.co.uk)

[www.19alexandraroad.co.uk](http://www.19alexandraroad.co.uk)

[www.thatcopyshop.com](http://www.thatcopyshop.com)

[www.booksonthehill.co.uk](http://www.booksonthehill.co.uk)

## Artisan Sunday market starts again soon

Explore and celebrate Clevedon's Hill and Sea area while shopping for artisan products when the Sunday Market returns.

The market launched last year to transform the area into a vibrant place to visit and now has about 40 stalls over three sites, celebrating locally-produced food and drink, talented craft makers and vintage collectors from the South West.

The market takes place on the first Sunday of the month between April and September, from 10am-2pm.

The trail begins in Alexandra Road to Sixways roundabout, onto Bellevue Road and round to Hill Road. Follow the signs or pick up a leaflet along the way.

[www.theclevedonsundaymarket.co.uk](http://www.theclevedonsundaymarket.co.uk)

# Could you be a

Foster families are needed in North Somerset to provide loving, stable homes for children and young people who cannot live with their own family.

North Somerset Council currently looks after about 200 children but there are only about 70 active fostering families who are approved for one to three placements each.

More are now needed and a recruitment drive is under way to find carers for children of different ages and #makeadifferencein2017.

## Billy

Eight-year-old Billy\* loves playing football and riding his bike.

He came into foster care a year ago because of concerns for his safety at home. Billy has grown up with domestic abuse between his parents, both of whom have mental health issues.

His school were worried about his behaviour and he expressed thoughts about hurting himself.

Billy has been with his current foster carers for six months and settled well but struggled with a new routine and rules at first.

He cannot stay in this short-term placement, though, and can't return home.

Instead, he needs a long-term foster family to give him structure, support, to feel loved and valued, but also to maintain appropriate contact with his mum and dad.



## Sarah

Sarah\* is 15 and loves animals, being creative and learning to cook simple dishes.

She first came into foster care aged 11 because of concerns for her safety. Her father died when she was three and her mother had a number of relationships with different men, some of whom were a risk to children.

Sarah witnessed domestic abuse at home and was physically abused by one of her mother's partners.

She struggled to settle into foster care at first and would run away, be rude

and got expelled from mainstream school.

As a result, Sarah moved into a residential unit when she was 13 and received a lot of support.

Her social skills and relationships developed and she now enjoys her education.

Sarah is ready to move into a foster family. She needs carers who can support her engagement in school, and her relationships with friends and family.



\* names changed to protect their identity



# foster family?

Want to know more?

Why do children come into care?

Children come into care from various backgrounds, for several reasons. Many have had difficult starts in life. Some may also have health problems or learning difficulties. With love, patience and commitment, the difference you can make is extremely rewarding.

Is all fostering the same?

No. Different schemes are available depending on your circumstances and preferences. A child might need a home for just a few days, on a long-term basis, or may need specialist care.

What experience do I need?

No professional qualifications are needed, rather the ability to listen to others, work as a team, be patient and show resilience.

Do I need my own home?

It doesn't matter if you own or rent your home as long as it is a safe place and you have a spare bedroom.

Can I still work if I foster?

Many foster carers continue to work but applicants need to show they are available to meet the needs of the child or young person. For children aged five or younger, one carer is expected to stay at home.

Are foster carers paid?

A generous allowance is paid to cover costs and any necessary equipment. A weekly fee is also paid depending on skills, experience and training.

What support is available?

A strong support network includes a supervising social worker, access to counselling, health, education and specialist professionals, ongoing professional development and regular fostering forums.



Do you know a child who is fostered privately?

Do you know a child who is living with someone who is not a close relative?

Private fostering is an informal arrangement when a child under 16 (or 18 if disabled) stays with someone who is not a close relative for more than 28 consecutive days.

It is very different to fostering schemes run by North Somerset Council but it is important the council knows about it to ensure the wellbeing of the child.

Private fostering could be a teenager living with the family of their boyfriend or girlfriend, children who live with a friend's family because of their parents' separation, or a child sent to this country for education or health reasons by parents who live abroad.

If you know a child who is fostered privately, encourage the carer or parent to tell the council as soon as possible.

To find out more visit  
[www.n-somerset.gov.uk/fostering](http://www.n-somerset.gov.uk/fostering)  
or call 01275 888 999

fosteringnorthsomerset  
#makeadifferencein2017



# Have your say on future services at Weston General Hospital

Local residents can now be part of the next step in building a strong future for Weston General Hospital.

Older people make up 23.8 per cent of North Somerset's population (compared with 19.5 per cent nationally)



The hospital has a significant deficit which will continue to grow year on year unless changes are made



Levels of deprivation and the gap between the most and least deprived areas are among the highest in England



Population is predicted to grow by 40 per cent by 2033 and 36,000 new houses are being planned in the next 10 years.



The hospital plays a crucial role in the local NHS but, as the smallest acute trust in England, it struggles with an increased demand for services, the long-term recruitment of doctors in some specialties, and delivering services with the money available.

Many of these issues have been on-going for years despite intense efforts locally and regionally to resolve them.

The local NHS in North Somerset is working with health and social care partners across Somerset, Bristol and South Gloucestershire to find long-term solutions which play to the hospital's strengths.

Dr Mary Backhouse, local GP and chief clinical officer of North Somerset Clinical Commissioning Group (CCG), said: "As a local GP, I am absolutely convinced we need to look at making some changes to the way services are run to enable us to continue delivering high quality care in the future.

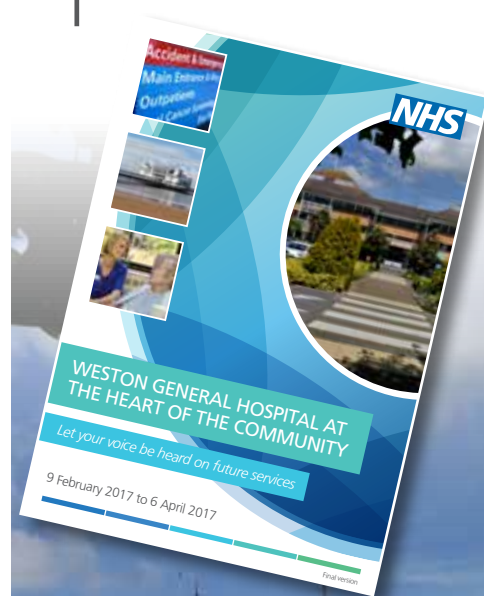
*"There are no easy answers to this but, alongside local doctors and nurses, we've started developing some outline ideas on how things could look in the future and we want to hear what you think."*

The CCG and its partners are considering a range of ideas.

Its vision is to keep Weston General Hospital at the heart of the community, providing the best possible health and care services for patients, carers, their families, and staff for decades to come.

Local residents can give their views on the way services are developed, which services to include, where they should be located, whether the plans go too far or not far enough.

Visit [www.northsomersetccg.nhs.uk](http://www.northsomersetccg.nhs.uk) to give your feedback by Thursday 6 April.



Read about the plans for Weston General Hospital at [www.northsomersetccg.nhs.uk](http://www.northsomersetccg.nhs.uk) or call 01275 546 702 for more information.

North Somerset CCG and Somerset CCG are the consulting authorities for this work.

@NSomersetCCG  
 nscgg

Contact Healthwatch North Somerset to find out about joining the patient reference group: 01275 851 400



# Arts alive in North Somerset

Talented artists from across North Somerset will be opening up their studios and showcasing their work when the popular Arts Week returns.

The bi-annual event runs from Friday 28 April to Sunday 7 May and this year 95 artists and some community groups are taking part in 53 venues across North Somerset.

Disciplines on show include ceramics, paintings, and drawings to glass work, jewellery and textiles.

North Somerset Arts was founded in 2002 as the first community-led arts not-for-profit organisation in North Somerset.

Its objective is to promote artistic and cultural activities by professional and

amateur artists, in order to increase public involvement and awareness of the arts.



Information about the exhibitions, artists and events during Arts Week will be available in a brochure, which can be downloaded from the website from early March.

The brochure will also be available in all North Somerset libraries as well as shops and cafes across the area.

[www.northsomersetarts.org](http://www.northsomersetarts.org)

 @NSomersetArts

 NorthSomersetArts

More dates for the diary

Thursday 6 – Saturday 8 April  
Backwell Players present

## Commencing

A one-act comedy about the expectations and disappointments of a blind date.

[www.backwellplayhouse.co.uk](http://www.backwellplayhouse.co.uk)

Sunday 16 April

## Pageant of transport and classic car show

Beach Lawns, Weston-super-Mare

Sunday 23 April

## St George's Day Parade

Knightstone Island to Grove Park,  
Weston-super-Mare





# Dig deep into Shipham's mi

Cross North Somerset's border into Shipham to discover the pretty former mini

## Walk information

Distance:

4.75 miles

Difficulty:

easy with some stiles, ups and downs, and one steep-ish short hill

Duration:

About 2-3 hours

Map:

OS Explorer 141



## How to get there

Start at map ref: ST 444528

Car:

Park in the village hall car park. If busy, park further into the village around the green. Please park sensibly

Miles More Mendip, by Sue Gearing and Les Davies, features 10 circular walks ranging from 3 to 7.5 miles.



Life readers are being offered discounted copies. Send a cheque for £8.99 per book, plus a flat fee of £2.50 postage and packaging, to Sue Gearing, 33 Garstons Close, Wrington BS40 5QT. Allow 10 days for delivery.

It is also available from Waterstones, other bookshops and some tourist information offices.

This circular walk features in the new book Miles More Mendip, by Sue Gearing and Les Davies.

From the car park, head towards the village hall entrance. Immediately turn right on a footpath which goes down under trees.

The path comes out onto the open playing field. Continue on, cross a stile, and descend through the bumpy land, the remains of former lead mining.

Go to the right of a closed reservoir and head down to the wall below. Turn left on the path alongside the wall. Cross right over a pipe stile and go through the field and onto the main road.

Cross to the Star Inn (#1 on map). Take the No Through Road to the right.

At the top, reach a bridleway track (#2) going left, with a Bristol Water installation on the corner. The pure

Mendip water is thanks to filtration through many layers of limestone.

Follow the track to Lyncombe Hill. Ignore side paths. Gently climb to a gate, bringing you out at the top of the hill (#3).

Continue across the open land to a gate into Sandford Woods.

Follow the track through the woods (#4) with a fence on the right around the former quarry.

Quarrying began in the mid-19th century and Sandford stone was reputed to have been used in the Avonmouth Docks construction and Temple Meads station expansion.

Start to drop down and pass a sign on a tree for Winscombe and Sandford Award land (#5).

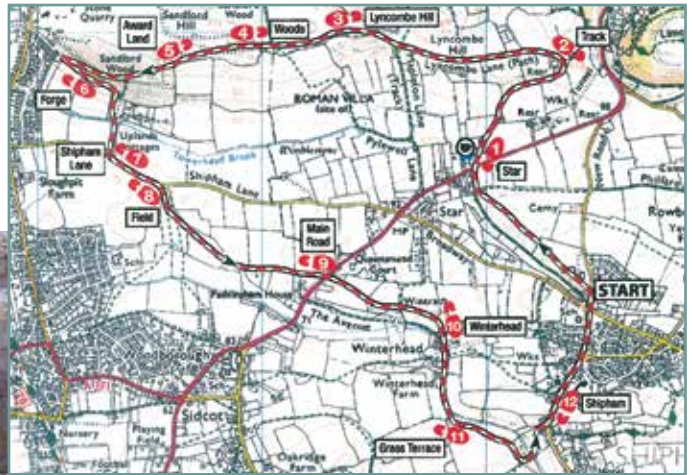
This land was awarded to the parish in 1799 so they could dig out stone to rebuild local roads.





# ning history

ng village.



© Crown copyright and database rights 2017 Ordnance Survey 100023397.

You are not permitted to copy, sub-license, distribute or sell this data to third parties in any form.



Reach a large metal gate on the right and a sign for Mike's Path, and take this.

It is named in memory of local man and dedicated naturalist Mike Stone who did a lot of work in the area.

Take the left fork down some steps. At the foot, turn right for a quick detour to old lime kilns.

Turn back to the forge (#6). This was originally used to build steam crushers and later reopened in World War 2 for Italian prisoners of war and local men to make tools for the quarry.

Continue ahead to a choice of paths. Take the grassy one on the right, known as Uplands Path.

Pass a former toilet used by prisoners of war and turn right down some steps to join tarmac. Keep straight on then bend left by a large barn, and then right up the drive.

Turn left on Shiphams Lane (#7) for a few minutes. Then, just before a track

on the right, turn right over a stone slab tile into a field.

Follow the left edge of the field (#8). Ahead is the edge of Winscombe.

At the corner, bear left along a narrow field. Cross onto a track and continue ahead to the A38.

Cross the main road (#9) to the drive opposite, and maintain direction.

Reach a junction in Winterhead (#10), formerly a lead mining settlement.

Continue on through the hamlet by a stream and join a rough track leading into a field.

Go towards the hill and bear up a grassy terrace (#11). Go into a field and follow the left edge.

At the end come onto a crossing track and turn immediately left, steeply downhill with steps to the stream and footbridge.

Climb up the other side, bend left and continue to rise. Cross a stile and carry on to the main road (#12).

Turn right after a few yards and cross the grass bank opposite.

Go left on the footpath, which becomes a raised tarmac path alongside the road.

Follow this down to join the pavement and continue into the centre. Find the Penscot Inn for refreshments, or Lenny's coffee shop by the Square.

Continue past the primary school on the left and old Turnpike Cottage on the corner of Broadway. Cross back by the 30mph sign to return to the village hall.





## LOCAL EVENTS

### March

#### Tuesday 14 – Saturday 18

Clevedon Light Opera Club present *Hairspray* Princes Hall Community Centre, Princes Road, Clevedon. [www.clevedon-lightoperaclub.co.uk](http://www.clevedon-lightoperaclub.co.uk)

#### Friday 17

St Patrick's Night with *Fougere Rouge* 8pm, Tithe Barn, Church Lane, Nailsea. Live music and dance with classic Irish favourites. £10 in aid of Nailsea Memory Café. 01275 790 915 or [www.nailseafolkclub.co.uk/tickets](http://www.nailseafolkclub.co.uk/tickets)

#### Saturday 18

Retro Electro 80s tribute band, The Reaper Bar, Tropicana, Weston-super-Mare. Tickets £10 in support of Lymphsham C of E Academy. [www.thereaperbar.com](http://www.thereaperbar.com)

#### Saturday 25

Carducci String Quartet 7.30pm, St. John's Church, Church Lane, Churchill. Tickets: Champions of Churchill Music! £12, non-champions £16, under 18s £4. Send SAE to Ursula Dornon, Dove Cottage, Upper Langford, BS40 5DH.

### April

#### Saturday 1

Mendip Society walk around Banwell Meet 2pm, in the free car park off opposite the school on the A371. A moderate five-mile walk onto Banwell Hill and through Christon Wood. It is planned that St Andrews Church in Banwell will be open with refreshments provided. Contact 01934 820 745

The Leylines spring tour 7pm, The Reaper Bar, Tropicana, Marine Parade, Weston-super-Mare. With support from Whitehall Parade and Rob Lear. Advance tickets £5, £8 on door. [www.thereaperbar.com](http://www.thereaperbar.com)

#### Sunday 2

Dawn chorus walk with local bird expert Ed Drewitt 5.30am, North Road, Leigh Woods. Tickets £10 from 08442 491 895

#### Saturday 8

Long Ashton Bowling Club coffee morning 10am-1pm, Jubilee Pavilion. If you're interested in playing bowls call Malcolm Pemble for more information: 01275 853 885

#### Thursday 27 – Saturday 29

Portishead players present *Guys and Dolls* Somerset Hall, The Precinct, High Street, Portishead. [www.portishead-players.org.uk](http://www.portishead-players.org.uk)

### May

#### Monday 1

North Somerset Show 8.30am-5pm, Bathing Pond Field, Bristol Road, Wraxall. Annual country show and family attraction. Advance tickets £13 for adults, £5 for children aged six-15, children five and under go free, family ticket £32.50. [www.nsas.org.uk/north-somerset-show](http://www.nsas.org.uk/north-somerset-show)

## CLUBS AND SOCIETIES

### Mondays

Weston Monday Art Group (E) 10am, St Saviour's Church Hall, Locking Rd. 01934 514 127

Winscombe District U3A Coffee Morning (1, except Aug) 10am, Winscombe Community Centre. £1 inc refreshments.

Tots1 (E, term time only) 10-11.30am, Bristol Road Baptist Church, Southside, Weston-super-Mare

Winscombe Probus Club (2 and 4) 10.30am, Winscombe Community Centre. 01934 820 893

Duplicate bridge (E)(and Thurs, Fri, Sat) 1.30pm, 21 Montpelier, Weston. 01934 633 530

Kewstoke Arts and Crafts Group (E) 2pm, Village Hall. 01934 628 309

Georgian Club for over 60s (E) 2pm, St Georges Community Centre, Willow Close. 01934 515 923

#### NHS Retirement

Fellowship (2) 2pm, Our Lady of Lourdes Church Hall, Worle. 01934 417 850

Winscombe District U3A (3, except Aug and Dec) 2pm, Winscombe Community Centre. £1.50 members, £2 non-members.

Yatton Art Group (E) 2.15pm, Village Hall. 01934 249 907

Clevedon Mixed Leisure Club (1 and 3) 2.30pm, Consti Club, Kenn Road. 01275 875 179

Weston Flower Arrangement Society (4) 2.30pm, St Georges Hall. 01934 812 177

Whist drive-in, Portishead (E) 7.15pm. 01275 844 290

Clevedon Lions Club (3) 7.15pm, Walton Hotel. 01275 878 983

Weston Amateur Radio Society (E) 7.30pm, Weston Social Club, Drove Rd. 01761 221 206

Weston Quilters (1) 7.30pm, United Reform Church, Waterloo Street. 01934 834 278

Worle Lions (2) 8pm, Windsor Castle pub. [www.worlelions.co.uk](http://www.worlelions.co.uk), 08458 339 862

Lions Club of Portishead (2) 8pm, Clarence House, High Street. 08432 895 330

Nailsea Lions Club (2) 8pm, Grove Sports Centre. 01275 855 046

Yatton WI (2) 8pm, Yatton Village Hall. 01934 834 796

Royal British Legion (Portishead) (3) 8pm, Clarence House, High Street. 01934 251 468

### Tuesdays

Weston U3A (E) 10am, Friends Meeting House, High Street

Mendip Art Group (E) 10am, Banwell Village Hall. 01934 645 885

North Somerset Botanical Painting Society (E) 10am, Brackenwood Garden Centre, Abbots Leigh. 01934 832 952

Age UK free advice sessions (1) 10am-noon, Portishead Library, (2) 10am-noon, Nailsea Library, (4) 9.30am-12.30pm, Winscombe GP surgery. 0845 643 4621

Friends of Trendlewood Park (3)(and first Sun) 10am-1pm, Trendlewood Park, Nailsea. [www.friends oftrendlewood-park.org.uk](http://www.friends oftrendlewood-park.org.uk), 07879 607 492

Western Active Stroke Group (E) 10am-noon, Worlebury Golf Club, Monks Hill, Weston-super-Mare. (also last Tues of month, skittles at the Ebdon Arms, Lilac Way. Wick St Lawrence) 01934 519 266

Coffee Stop drop-in coffee morning (E) 10.30am, Milton Baptist Church, Baytree Rd. 01934 641 574

Kewstoke's Tiny Teds Toddler Group (E) 10.30am-noon, St Paul's Church Hall. £2 per family. 07980 384 034

Clevedon Probus Club 1974 (1)(3) 10.30am, Community Centre, Princes Rd. 01275 876 297

Clevedon Probus 2008 Club (2)(4) 10.30am, Clevedon Community Centre, Princes Rd. 01275 874 631

Multicultural Friendship Association (E) 1-3pm, Weston Room, Badger Centre, Wadham Street, Weston. 07587 335 963, [www.mfa-wsm.org.uk](http://www.mfa-wsm.org.uk)

Lynne Castell Watercolours Art Group (E) 1-4pm, Our Lady of Lourdes Parish Room, Baytree Road, Weston-super-Mare. 01934 628 760 or [www.lynnecastell.f2s.com](http://www.lynnecastell.f2s.com)

Portishead Rotary Club Memory Café (1)(3) 2.15pm, Jubilee Hall, Slade Rd. 01275 871 197

Catenian Association (1) 7:15pm, Cadbury House Hotel, Congresbury. For Catholic men. 01275 877 180

Weston Scrabble Club (E) 7pm, St Saviour's Church Hall, Locking Rd. 01934 620 948

Rotary Club of Portishead (E) 7.30pm, Clarence House, High Street. 01275 845 509

A1 Camera Club (E) 7.30pm, St Georges Community Centre, Willow Close. 01934 521 780

Nailsea Scrabble Club (E) 7.30pm (and Wed 2pm), Mizzymead Recreation Centre. 01275 464 864

Hutton Ladies Group (1) 7.30pm, Village Hall. 01934 623 450

Portishead Quilters (1)(3) 7.30pm, Redcliffe Hall. 01275 848 467

North Somerset Vintage Tractor Club (1) Redhill Village Club. 01275 474 649

Weston Railway Society (1) Function Room, Conservative Club. 01934 628 289

Clevedon Art Club (2) 7.30pm, St Mary's Church Hall, Castle Rd. 01275 879 556

Women of Weston Women's Institute (3) 7.30pm, Vintage Community Church, Hughenden Road, Weston. [WeAreWOWWI@gmail.com](mailto:WeAreWOWWI@gmail.com)

Weston Archaeological and Natural History Society (2) 7.30pm, Victoria Methodist Church Hall, Station Rd. 01934 620 785

Portishead Townswomen's Guild (4) 7.30pm, Folk Hall. 01275 847 271

Clevedon and District Model Boat Club (4) 7.30pm, The Salthouse (also sail on the 2nd Sunday of the month at 10am)

Nailsea and District Model Railway Club (E) 7.30pm, Clevedon Craft Centre, off Moor Lane. [www.nailsea-district-mrc.co.uk](http://www.nailsea-district-mrc.co.uk)

Clevedon and District Flower Club (4) 7.30pm, Community Centre, Princes Rd. 01275 859 797

Nailsea Miners Rotary Club (E) 7.45pm, George pub, Backwell. 01275 854 641

Weston and Mendip Advanced Motorists' Group (3) 8pm, Village Hall, Crookes Lane, Kewstoke

North Somerset Modellers' Society (2) 8.30pm, Windsor Castle pub, Milton. 01934 417 907



KEY: (E) Every • (A) Alternate • (1) First • (2) Second • (3) Third • (4) Fourth • (L) Last



## Wednesdays

**Lynne Castell Oils, Acrylics, Pastels Art Group** (E) 10.30am-1pm. 01934 628 760 or [www.lynnecastell.f2s.com](http://www.lynnecastell.f2s.com)

### Age UK free advice sessions

(1)(2)(3) 10am-noon, Town Hall, Weston-super-Mare, (4) 10am-noon, Cadbury Garden Centre. 0845 643 4621

**Weston Ladies Cards** (A) 10.30am, Night Jar pub, Mead Vale. 07979 051 001

**Yeo Valley Probus Club** (1)(3) 10.30am, Backwell Bowls Club. 01275 857 769

**Backwell Probus Club** (2)(4) 10.30am, West Backwell Bowling Club. 01275 462 627

**North Somerset Over 50s Club** (4) 11am, Clevedon Community Centre. 01275 842 282

**Gordano Probus Club** (2) 12.30pm, Clarence House, High Street, Portishead. 01275 398 706

**Portishead Probus Club 73** (3) noon-3pm, Clarence House Social Club, High Street. 01275 814 249/07715 572 106

**Failand Art Group** (E) 1.30pm, Village Hall, Oxhouse Lane. [Jimpeck1502@gmail.com](mailto:Jimpeck1502@gmail.com)

**Banwell Bridge Club** (E) 1.30pm, Village Hall. 01934 518 690

**Friends of Weston-super-Mare Museum** (3) 1.30pm, Blakehay Café, Wadhams Street, Weston. Meetings free to members. Small fee to visitors.

**Woodspring Scrabble Club** (E) 2pm, United Reformed Church, Weston. 01934 815 358

**Nailsea Scrabble Club** (E) 2pm, Mizzymead Recreation Centre. 01275 464 864

**Worle Friendship Club** (E) 2pm, Worle Community Centre, Lawrence Rd. 01934 510 863

**Weston Society of Arts** (A) 2pm, Victoria Methodist Church Hall. 01934 520 564

**Portbury Over Sixties Club** (1) 2pm, Portbury Village Hall

**Backwell Garden Club** (3) 2pm, WI Hall. 01275 464 236

**Portishead Senior Citizens Forum** (3) 2.15pm, Folk Hall. 01275 843 678

**Clevedon Senior Citizens' Forum** (L) 2.30pm, Masonic Hall, Albert Road. 01275 874 296

**Social/activity group for ages 40+** (E) Venues in Weston. 07733 411 238

**Weston Amnesty International** (2) 6.30pm, Worlebury Golf Club, Weston. 01934 419 014

**Weston and Worle Bridge Club** (E) 7pm (and Fri 2pm), St Joseph's Church Hall, Camp Rd. 01934 510 027

**Weston Sea Cadets** (E) (and Fri), 7pm, Cadet HQ, Sunnyside Rd North. 11 to 18-year-olds.

**Portishead Spiritualist Association** (E) 7.30pm, Brampton Way Playgroup Hall, Brampton Way. 01275 843 744

**Wrington Vale Rotary Club** (E) 7.30pm, Burrington Inn, Burrington Combe. 01934 844 214

**Clevedon Yeo Rotary Club** (1 and 3) 7.30pm, Walton Park Hotel, Wellington Terrace, Clevedon. 01275 218 987 [www.clevedoneyeorotary.org.uk](http://www.clevedoneyeorotary.org.uk)

**Nailsea and District Horticultural Society** (2) 7.30pm, United Reformed Church Hall, Stockway North. £2 for members, £3 for visitors. 01275 855 342

**Nailsea Stamp and Postcard Club** (2) 7.30pm, Mizzymead Recreation Centre. 01275 855 875

**Nailsea and Backwell Townswomen's Guild** (2) 7.30pm, Methodist Hall. 01275 810 579

**Worle WI** (3) 7.30pm, Castle Batch Community Centre, Bishop's Avenue. 01934 511 329

**Portishead Floral Art Society** (3) 7.30pm, Somerset Hall. £5 for visitors. 01275 374 201

**Royal British Legion (Clevedon)** (3) 7.30pm, Community Centre, Prince's Rd. 01275 879 816

**Gordano Valley 41 Club** (4) 7.30pm, Royal Inn, Portishead. 01275 817 258

**Weston Moose Social Evening** (L) 7pm, Ebdon Arms, Wick St Lawrence. Skittles, darts and friendly conversation. 01934 814 042 or [41litton@tiscali.co.uk](mailto:41litton@tiscali.co.uk)

## Thursdays

**Community Coffee Morning** (E) 10am, Clarence Park Baptist Church, Walliscote Rd. 01934 424 550

**Probus Club WSM** (1)(3) 10am, Worlebury Golf Club, Worlebury. 01934 514 857 [www.probusweston.com](http://www.probusweston.com)

**Probus Club of Nailsea** (2)(4) 10am, Mizzymead Social Club. 01275 852 515

**Probus Milton** (2)(4) 10am, Milton Methodist Church. 01934 525 476

**Civil Service Retirement Fellowship** (1)(3) 10am, Friends Meeting House, High Street, Weston. 01275 858 766

**Lynne Castell Calligraphy Art Group** (E) 10.30am-1pm. 01934 628 760 or [www.lynnecastell.f2s.com](http://www.lynnecastell.f2s.com)

**Copse Coffee drop-in coffee morning** (A) 10.30am, Cope Rd Chapel, Seavale Rd, Clevedon. 01275 798 667/07873 180 135

**Notable Club** (E) Uphill Scouts Hall. 07845 220 349

**Social duplicate bridge** (E) 2pm, Vintage Community Church Hall, Hughenden Road, Weston-super-Mare. 01934 627 751

**Winscombe Bridge Club** 2pm. 10-week course starting Thurs 29 Sept. £45. Call 01275 540 604 [www.winbridge.org.uk](http://www.winbridge.org.uk)

**Weston and District National Trust Association** (2)(and fourth Fri) 2.15pm, Corpus Christi Church Hall, Weston. 01934 633 593

**Yatton Knitting Club** (E) 5.45-6.45pm, Yatton Library. All abilities welcome. Free tea or coffee. 01934 426 100



**Vintage Hornby Railway Collectors** (4) 6pm, Scout Hut, Totterdown Rd Weston. 01934 413 053

**Loves Book Club** (1) 6.30pm, Loves Cafe, 9 West Street. 01934 645 672

**Vegetarian Cookery Club** (A) 6.45pm, Church Hall, 500 Locking Rd, Worle. 01934 628 860

**Weston Moose Semi Formal Dinner** (1) Banwell Castle, £10 for two courses. 01934 814 042, alan.moosewsm@outlook.com

**Weston Woodturning Circle** (3) 7pm, Weston Football Club, Winterstoke Rd. 01934 510 862

**Weston Chess Club** (E) 7.30pm, Weston-super-Mare Conservative Club, 24-26 Alexandra Parade. 01934 643 171

**Weston-super-Mare RSPB** (1, Sept-April) 7.30pm, St. Paul's Church Hall, Walliscote Rd. 01934 835 208

**Weston-super-Mare Horticultural Society** (2) 7.30pm, St Peter's Church Hall, Baytree Rd.

**Banwell WI** (2) 7.30pm, Village Hall, Banwell. Visitors welcome. 01934 824 900

**Avon Wildlife Trust Long Ashton** (3) 7.30pm, Jubilee Pavilion, Keedwell Hill. 01275 392 690

**North Somerset Rural Business Forum** (3) 7.30pm, Winford Manor Hotel. £7.50 for non members. 01531 820 307

**Royal British Legion (Nailsea)** (3) 7.30pm, Grove Sports Club. 01275 856 879

**Bristol Sailors Meeting** (4) 8pm, British Legion Hall, Long Ashton.

## Fridays

**Good Companions Senior Citizens Club** (E) 9am, Somerset Hall, Portishead. 01275 848 059

**Tots2** (E, term time only) 10-11.30am, Bristol Road Baptist Church, Southside, Weston-super-Mare

**Mead Vale Friendship Club** (over 50s) (E) 2pm, Community Hall, Worle. 01934 510 672

**Portishead Folk Hall Senior Citizens Club** (E) 2pm, Folk Hall, High Street, Portishead. £1, inc refreshments and entertainment. 01275 390 350

**Scrabble Club** (E) 2.15-5pm, Clevedon Conservative Club. £1 per session. 01275 342 974

**Byte Home Computer Club** (1)(3)(4) 7pm, Nailsea Fire Station, Pound Lane. 01275 852 521

**North Somerset Quilters** (3) 7.30pm, WI Hall, Station Rd, Backwell. 01275 463 119

**Portishead Stamp Club** (4) 7.30pm, Friends Meeting House, St Mary's Rd. 01275 374 738

**Banwell Society of Archaeology** (2) 7.30pm, Banwell Village Hall.

## Saturdays

**Hutton Lace and Craft Group** (2) 9.30am, Village Hall. 01934 822 871

**CREWS Backstage Support** (E) 10am-1pm, The Stables, Princes Rd, Clevedon. 07824 821 814

**Portbury Community Café** (1) 10am, Village Hall. 07971 501 374

**YABEEP Natural Beekeeping Group** (2) 10.30am, Claverham Village Hall, Bishops Rd. [YABEEP@gmail.com](mailto:YABEEP@gmail.com)

**Avon Guild of Spinners, Weavers and Dyers** (2) 10.30am, Bowls Pavilion, Long Ashton Community Centre. 01275 464 526

**Parkinson's UK North West Somerset branch meeting** (2) 10.30am-12.15pm, St Francis Church Hall, Nailsea. 01275 855 524

**Weston-super-Mare & District Family History** (E) 2-3.30pm, Weston library, Town Hall, Walliscote Grove Rd.

## Sundays

**Worle Lions Quiz** (1) Windsor Castle pub. Entry £2.50 inc food and cash prize. [www.worlelions.co.uk](http://www.worlelions.co.uk) 08458 339 862



# Enjoy the countryside – be tick aware

Sunny spring weather brings lots of opportunities to get out and about and enjoy the great outdoors.

North Somerset has a wealth of beautiful countryside to explore but residents are being reminded of the dangers of ticks before they head out.

Ticks are small, spider-like creatures that feed on the blood of animals and people and their bites can cause very serious conditions if left untreated, including Lyme disease.

They can be found throughout the year but are most active between spring and autumn so be careful when walking through fields or woodland.

Damp, shady dense vegetation, dead leaves or long grass provide the perfect habitat, near to deer, small mammals or wild birds.

Ticks don't jump or fly but climb onto people or animals as they brush past.

## Simple steps to avoid tick bites

- walk on clearly defined paths
- avoid dense vegetation
- wear light-coloured clothing so ticks are easier to spot and brush off
- use repellents such as DEET
- perform a tick check – make it a habit to check your clothes and body regularly when you're outdoors and again when you get home.

Contact your GP or call NHS 111 if you begin to feel unwell and remember to tell them you were bitten by a tick. • [www.NHS.uk](http://www.NHS.uk) and search "lyme disease"

They bite into the skin to attach themselves and then start feeding on the blood of their new host.

Signs you've been bitten by a tick

Symptoms of Lyme Disease can include a distinctive circular rash, and mild flu-like symptoms including fever, headache, fatigue, and muscle and joint pain.

Ticks prefer warm places on the body, especially the groin area, waist, armpits, behind the knee and along hairlines.

Look out for anything as tiny as a freckle or a speck of dirt.

Young children are more commonly bitten around the head, so be extra careful to check around the neck, behind the ears and on the scalp.

If you have been bitten, remove the tick as soon as possible using a pair of sterilised tweezers and grasping the tick as close to your skin as possible.

Pull upwards slowly and firmly, totally removing as much of the tick as you can.

Apply antiseptic to the bite area and keep an eye on it for several weeks to check for any changes.

Public Health England runs a tick surveillance scheme. Please report all tick bites to [tick@phe.gov.uk](mailto:tick@phe.gov.uk)







# Get on your bike and explore

Travelling by bike is a great way to explore North Somerset or get to work or school.

Whether you are a beginner or a more experienced cyclist, North Somerset Council has a range of initiatives to help you get on the saddle.

## Borrow a Bike and adult cycle training

Bikes are available to borrow for a trial period if you haven't got one.

Hybrid, electric and folding bikes are available, subject to availability, for up to two weeks.

Free adult cycle training is also available if you feel a bit rusty, need to build up your confidence or would like extra tips.

Contact  
[sustainable.travel@n-somerset.gov.uk](mailto:sustainable.travel@n-somerset.gov.uk)  
for a voucher.

## Sustainable travel grants



A cycle stand in Locking Parklands, partly-funded through sustainable travel grants

Funding is available for business, schools and community organisations to help pay for cycle shelters, lockers and pool bikes.

For details email  
[sustainable.travel@n-somerset.gov.uk](mailto:sustainable.travel@n-somerset.gov.uk)

## Work continues on Coastal Towns route

Improvements to the Coastal Towns cycle route (Sustrans route 33) are continuing.

Recent work has been carried out to upgrade an existing track from Uphill to Wayacre Drove, off Accommodation Road in Bleadon, into a 3.5m wide tarmac shared-use path. This is due to be completed in mid-March.

## Have your say on cycling issues

Local cyclists can get their voices heard and talk about the issues which affect them by joining North Somerset Cycle Forum.

The group meets three times a year, supports a range of cycling events, and liaises with other stakeholders such as the Local Access Forum and Sustrans.

It is also a consultative body for policies and proposals, including planning applications, in North Somerset.

The next meeting takes place from 6-8pm on Thursday 16 March at the council's Castlewood office in Clevedon.

Anyone who wants to attend can email [sustainable.travel@n-somerset.gov.uk](mailto:sustainable.travel@n-somerset.gov.uk) for an agenda.

[www.n-somerset.gov.uk/cycleforum](http://www.n-somerset.gov.uk/cycleforum)



## Funding success

More sustainable travel projects will be coming to North Somerset thanks to £1.25m of funding over the next three years, to March 2020.

North Somerset Council was part of a West of England joint bid to the Department for Transport's Access Fund.

This new funding means the council can continue to manage and support a range of cycling and walking initiatives, as well as develop new projects.

# travelwest

[www.betterbybike.info](http://www.betterbybike.info)

If somewhere on the cycle network needs attention, repair or maintenance, report it online at [www.n-somerset.gov.uk/connect](http://www.n-somerset.gov.uk/connect)

# Budget and council tax levels set

Council tax bills will be landing on doormats across North Somerset this month.

Last month councillors set the budget and council tax levels for the new financial year and, at the time of *Life* going to print, a rise of 1.75 per cent was expected.

On top of this, there is an additional three per cent levy which will be ring-fenced to meet the growth and increasing costs of adult social care.

Dealing with the pressures and demands of adult social care is a national issue, as the population ages and there are many more people living with long-term and complex health conditions.

As well as this, central government has reduced its funding to local councils since austerity measures began in 2010.

North Somerset Council has a good track record of managing its money efficiently and has saved more than £60m from its overall expenditure in the last five years, but the challenges are becoming more difficult.

## Reduced grants from central government

Continued cuts to central government grants mean there is now a heavy reliance on the council to generate its own income to pay for local services.

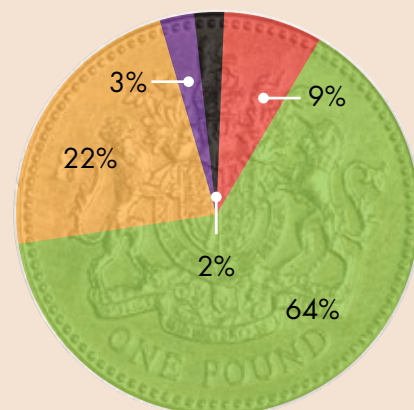
Back in 2010/11, North Somerset Council had an income of £160.8m. Of this, about 58 per cent came from council tax payments, almost 28 per cent from business rates, and about 14 per cent from central government grants.

Currently, this government funding has reduced to nine per cent, and by 2020 it will account for just one per cent of the council's income.

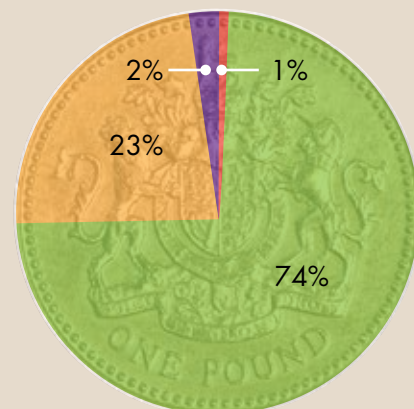
This year's rise means the annual charge for an average Band D property in 2017/18 is **£1,265.81** for the council's share.

This is about **£24.34** a week.

2017/18 Resources



2020/21 Resources





# What is council tax?

Council tax is a property tax levied by local councils to top up the funding they receive from central government.

It pays for a wide range of services – including education, planning, transport, highways, social care, public health, libraries, leisure and recreation, recycling and waste collection, environmental health, trading standards and many more.

By 2020, it is anticipated that almost three-quarters of North Somerset Council's income will come from council tax, as central government grants reduce to just one per cent.

North Somerset Council also collects the charges for Avon and Somerset Police authority, Avon Fire and Rescue, and town and parish councils. North Somerset Council has no control over the amount, or percentage increase, of these other elements of the bill.



- Government funding
- Council tax
- Business rates
- New homes bonus
- Reserves and surplus



## Pay your council tax online

Council tax can be paid online through North Somerset Council's MyAccount service.

Council tax and benefits services can be accessed through the council's website by registering and creating an account.

Once set up, you can apply for benefits, discounts or exemptions, let the council know about a change of circumstances, set up a direct debit, or view your account balance, among other services.

Going digital means requests can be processed earlier and you may receive your benefit earlier.

For customers who have difficulty getting online or have additional needs, support is available. Visit the Town Hall, in Weston-super-Mare, your local library, or call 01934 888 144 [www.n-somerset.gov.uk/myaccount](http://www.n-somerset.gov.uk/myaccount)

- Government funding
- Council tax
- Business rates
- New homes bonus



## £1m investment to improve



Traffic flow is set to improve on a major route in Weston-super-Mare thanks to a £1m road improvement scheme.

The scheme at West Wick roundabout and Elmham Way, near Morrisons, is being carried out ready for the creation of the North South link road, which will run between the A371 and Churchland Way.

Work started in February and will continue through the spring, so should be completed before the summer holidays begin.

About £795,000 of the funding is from the government's Local Growth Fund, and the rest is coming from section 106 contributions and the Joint Local Transport Fund.

The scheme is being carried out by Skanska on behalf of North Somerset Council in two phases.

In the first phase, traffic lights are being installed where the traffic joins the roundabout from the A370

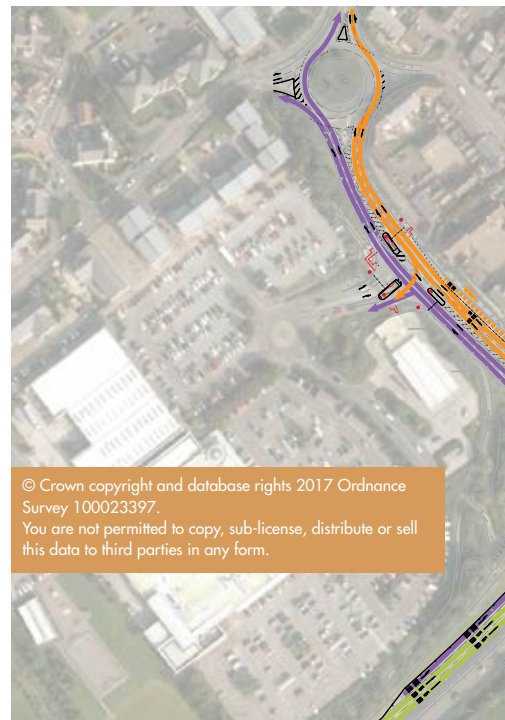
Somerset Avenue (in both directions) and Elmham Way.

The second phase will see a new lane created on Elmham Way, on the approach to the smaller Bransby Way/Elmham Way/Rowan Place roundabout.

The road won't need to be widened for this new lane. Instead, the position of the refuge islands will be adjusted and the length of the bus lane will be shortened.

Colin Medus, North Somerset Council's head of highways and transport, said: "Weston is an area that is continuing to grow and develop.

"The traffic lights and extra lane will improve traffic flow in and out of town and reduce congestion, meeting the needs of both residents and commuters."



© Crown copyright and database rights 2017 Ordnance Survey 100023397.  
You are not permitted to copy, sub-license, distribute or sell this data to third parties in any form.

Most work is taking place between 9.30am and 3.30pm to avoid the morning and evening rush hours, including the work to reduce the number of traffic lanes.

Where possible, contractors are continuing to work off-road during rush hours to get it completed as soon as possible.

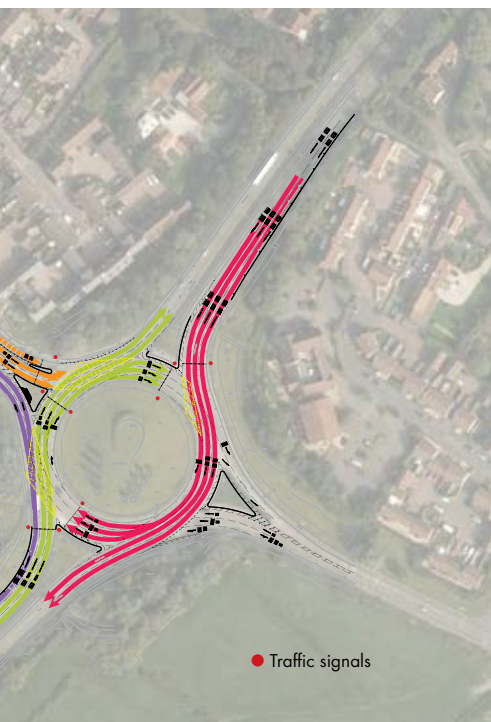
If any further evening work is needed, it happens between 7pm and 11pm. This is limited though, and contractors are mindful of residents living nearby.

The majority of work is taking place using narrow lanes and lane closures, with access to properties and businesses maintained.

The road will need to be closed when it is due to be resurfaced, but this is likely to be overnight and as much notice as possible will be given.



# traffic flow on major route



**479**  
gullies  
were cleaned this month

That's the same as the  
length of  
**Ashcombe  
Road**  
in Weston-super-Mare

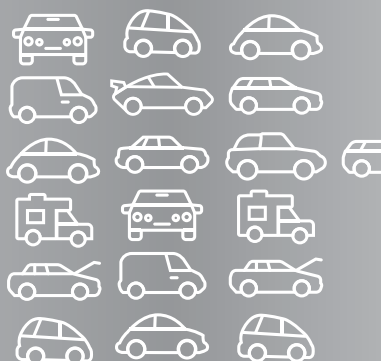
Assuming the average gully  
is 1m in depth

**Gullies cleared**

January 2017



**213**  
square metres of  
patching  
completed



That's  
the same as  
**18.5**  
parking spaces

Assuming a parking space of  
4.8m x 2.4m dimensions

**Patching completed**

January 2017



## Extra funding announced

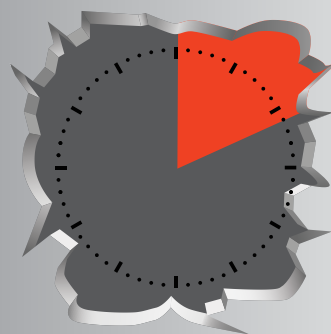
Roads in North Somerset will benefit from an additional £788,000 funding in the coming year.

The money is being given to the area through the new National Productivity Investment Fund, announced by the Chancellor in last year's Autumn Statement.

This is in addition to the £3.6m allocated for highways maintenance in the next financial year, and £276,000 from the national pothole fund.

This additional investment will help to support the council's commitment to improving roads across the area.

**929**  
potholes  
were repaired



That's **1** every  
**11** minutes

Assuming  
253 working days per year  
and an 8 hour day

**Potholes repaired**

January 2017



To keep up-to-date on any road closures for this scheme, visit [www.n-somerset.gov.uk/westwick](http://www.n-somerset.gov.uk/westwick) or keep an eye on the council's Facebook and Twitter accounts.



# Flying the Purple Flag for Weston

Evening visitors to Weston-super-Mare can be confident the town centre is a safe and vibrant destination after it gained Purple Flag status for the second year.

The prestigious Purple Flag was awarded in recognition of the town centre's safe and diverse evening and night-time economy.

It followed a joint submission by North Somerset Council, Avon and Somerset Police and the Weston Business Improvement District (BID).

Towns achieving Purple Flag status are recognised for providing a vibrant mix of night-time entertainment while promoting the safety and wellbeing of visitors and local residents.

The national accreditation scheme is managed by the Association of Town and City Management.

Assessors said: "Weston has worked hard since its last award. Ambitious targets have been met and this is an example of a town growing its evening and night-time economy through partnership working."

The report highlighted the wide range of entertainment and eating venues in the town, the Tropicana being established as an entertainments and arts venue, and the regeneration taking place, such as Dolphin Square.







doubt impact positively on our evening and night-time economy."

Chief inspector Tina Robinson, local policing commander for North Somerset, said: "This is really positive news for the town.

"My teams have worked very hard with the council and BID team to make Weston a safe place, so we are delighted this has been recognised."

In another boost to Weston's night-time economy, the town has been picked by the Home Office for the second phase of the Local Alcohol Action Area (LAAA) programme.

This means the council will be working with the Home Office over the next two years to develop and implement plans to improve the night-time experience in Weston for everyone.

It also means best practice will be shared with the other areas involved in the programme so they can learn from each other.

As well as support from central government, specialist help will also be available from not-for-profit company Nightworks, which has 12 years' experience of helping areas

diversify and improve their evening and night-time economies.

In Weston, one of the main aims for this year is to get the safer communities bus Mavis out in town every Saturday night.

The bus provides a safe haven for vulnerable people needing help and support and a hub for police, ambulance, street wardens, street pastors, licensing and other local agencies working during the night.



The council would also like to introduce an award scheme aimed at promoting responsible management and operation of licensed premises.

Similar schemes in other parts of the country have been found to improve standards in the evening and night-time economy.

Assessors also praised the excellent partnership working, including the regular multi-agency nights of action and the Mavis (multi-agency vehicle in service) bus.

Jo Mercer, safer and stronger communities manager at North Somerset Council, said: "We are delighted that all the partnership work that goes into ensuring people have a good night out in Weston has again been recognised.

"The assessors have also acknowledged the ambitious programme of regeneration taking place in the town, which will further improve the range and quality of Weston's night-time offer."

Weston town centre and BID manager Steve Townsend said: "Weston town centre is undergoing significant change and regeneration that will no





## Spring has sprung so spruce up your security

Burglary is a serious issue so as the days get longer, now could be the perfect time to spruce up your security.

There are a few simple steps you can take to protect your property, whether it is simply locking your doors and windows or marking your valuables.

*Life* spoke to former serial burglar Tony (not his real name) to find out what he looked for.

Tony began burgling 35 years ago to fund his drug habit. He was in and out of prison a number of times, with his longest sentence being four years.

He said: "I'd take anything of value, TVs, jewellery, computer consoles, to sell on.

"When you've got a drug habit, you'll do anything for your next fix."

Tony, who is now clean, said: "I feel very guilty about what I've done, taking things that people have worked hard to buy or have sentimental value."

Tony said: "I'd look out for cat flaps. Some people would leave their keys in the back door, so you could just put your hand through the cat flap and reach up.

"Some things would put me off a property though, like noisy gravel driveways and motion-sensor lights."

So what can you do to prevent a burglary in your home?

Don't leave keys, mobile phones or other small electrical devices by open windows, particularly if you are elsewhere in the house or garden. Don't let thieves help themselves.

Reports of anti-social behaviour rise during the spring and summer. Be mindful of noise levels when your windows are open.



Chief Inspector Tina Robinson, local policing commander for North Somerset, said:

*"Remember to lock your doors and windows when you go out and at night. It would cut burglaries by 25 per cent."*





## Get your garden in order

Look at your home from the perspective of a burglar – start from the street and go around your property to identify the vulnerable points, including the garden, boundaries and drive.

### Top tips for garden security

- improve natural surveillance at the front of your property by trimming high hedges and cutting back any overgrown trees and shrubs
- install good outside lighting
- keep ladders and tools stored away, not left outside where they could be used to break into your home
- ensure side gates are locked to prevent access to the back of your property
- use good quality or specialist locks on sheds, garages and gates
- make sure any fences around your garden are in good condition
- you could supplement and reinforce garden fences with prickly plants and shrubbery. For advice visit [www.cleevenursery.co.uk/blog/garden-plants-that-you-can-grow-to-deter-burglars](http://www.cleevenursery.co.uk/blog/garden-plants-that-you-can-grow-to-deter-burglars)

## In the home

Most burglaries are committed by opportunist thieves. In a quarter of all burglaries the thief doesn't use force, they get in through open doors or windows. Simple precautions, such as remembering to lock-up, can be surprisingly effective.

### What can you do?

- lock doors and windows every time you leave the house
- hide all keys, including car keys, out of sight and away from the letterbox
- install a burglar alarm
- get a trusted neighbour to keep an eye on your property while you are away
- leave lights and radios on a timer so the property appears occupied when you're out
- mark your property with your postcode and house number and register valuables for free at [www.immobilise.com](http://www.immobilise.com)
- consider joining or forming a Neighbourhood Watch scheme. Visit [www.ourwatch.org.uk](http://www.ourwatch.org.uk) or [www.avonandsomerset.police.uk](http://www.avonandsomerset.police.uk)



## Don't give thieves an easy ride

Longer days and improving weather sees many people dust off their bikes and take to roads and trails around North Somerset.

The increasing popularity of expensive models, and the relative ease of selling stolen goods online, means bikes are attractive to thieves.

### To protect your bike...

- get a good lock
- lock it to something secure, even if only for a few minutes, and avoid isolated places – leave your bike where a potential thief can be seen
- lock up removable parts (such as wheels) and take light fittings with you
- take a photo of it, make a note of serial numbers and register it on [www.bikeregister.com](http://www.bikeregister.com) or [www.immobilise.com](http://www.immobilise.com)
- keep it in a secure garage or shed with the door locked
- get the frame security-marked or engraved. Local police beat teams work with British Transport Police to hold regular bike marking and security events at train stations and Ashton Court.

Find out about your local police team at [www.avonandsomerset.police.uk/your-area](http://www.avonandsomerset.police.uk/your-area)

For more security and crime prevention advice visit [www.avonandsomerset.police.uk/crimeprevention](http://www.avonandsomerset.police.uk/crimeprevention)

[www.n-somerset.gov.uk/keepsafe](http://www.n-somerset.gov.uk/keepsafe)



# Stay safe online

Online shopping and banking are convenient tools for many people who want access to products and services at the click of a button.

However, some people worry about the dangers of putting their personal details online as reports of cybercrime soar.

North Somerset Council wants to encourage more people to use its own MyAccount system to report council services and access council tax and benefits payments at any time of the day or night.

Reporting online instead of over the phone helps the council save money and operate in a more efficient way.

If anyone has concerns about using the internet for this purpose, though, there are a few simple steps you can take to protect yourself.

## What is cybercrime?



Cybercrime is any offence where criminals use technology, such as computers, smartphones and tablets, to break the law.

This can be theft of personal and sensitive data, fraud, stalking and harassment, bullying or grooming.

Official figures from the Office for National Statistics released last July revealed there were 5.8m incidents of cybercrime during 2015-16, much higher than originally thought.

## Making payments online



Millions of people buy products and pay for services online to enjoy discounts and the vast choice that the internet can offer.

To ensure your safety and beware of scams, only buy from or use reputable companies.

When making a payment online, make sure there is a padlock icon on the address bar and the web address starts https://, to show it is secure.

## Scam emails

Scam emails take advantage of vulnerable people by encouraging them to part with money on false promises.



Fraudsters might use fake websites to trick you into revealing your personal information, known as phishing.

Look out for emails which claim to come from a trusted source but are sent from free addresses such as Hotmail or Gmail.

If you believe an email is a scam, do not reply to the sender in any way. Showing any interest may only lead to further scam emails.

Do not open any links or attachments but if you do visit a link, do not enter any sensitive information.

Use your email provider's options to block the sender and flag the message as being spam.

If you think you may have compromised your bank details, contact your bank immediately.



Your bank will then be responsible for investigating and will report any case of criminal activity to the police.



If you think you're a victim of another kind of identity fraud, you must report the matter to the relevant organisation.

You should report all lost or stolen documents – such as passports, driving licences, plastic cards, cheque books – to the relevant organisation.

### Identity theft

Identity theft happens when criminals use someone's personal information, such as their name, date of birth, current or previous addresses, to obtain goods or services by deception.

If you're a victim it can have a direct impact on your personal finances as well as making it difficult to obtain loans, credit cards or a mortgage until the issue is resolved.

If you receive bills or invoices for things you haven't ordered, act quickly.

Even though you didn't order those goods, the bad debt will be attached to your name and address.

Get a copy of your credit report to see what credit accounts are set up in your name.

If you find entries from organisations you don't normally deal with, contact them immediately.

[www.avonandsomerset.police.uk/advice](http://www.avonandsomerset.police.uk/advice)

Action Fraud – the UK's national fraud and internet crime reporting centre. Call for advice on 0300 123 2040 (9am-6pm, Monday to Friday)

[www.actionfraud.police.uk](http://www.actionfraud.police.uk)

[www.getsafeonline.org](http://www.getsafeonline.org)

[www.n-somerset.gov.uk/keepsafe](http://www.n-somerset.gov.uk/keepsafe)

If you think you've been a victim of a scam, call Citizens Advice consumer services: 03454 040 506

## Top tips

P

patch your software as soon as updates become available and keep your antivirus up-to-date



R

review your privacy settings on mobile devices and social media so you aren't over-sharing private information



O

take ownership of your online privacy and understand what information the company will collect when you sign up to a new website or service



T

use two factor authentication, which combines your password with your device. For example, a security code will be texted to your mobile when you try to log into the website



E

email addresses can be spoofed so if you are uncertain where it came from, don't click on it



C

change passwords regularly. Consider using three random words with numbers and symbols



T

tell friends and family to be careful too and follow these top tips.



Get Safe Online  
Free expert advice

**ActionFraud**  
National Fraud & Cyber Crime Reporting Centre  
0300 123 2040

# Get down to earth

Creating your own compost is the most environmentally-friendly way of disposing of garden waste.

As the days get longer and warmer, now is the perfect time to give it a go.

Composting is great for the environment, your garden, and also your pocket because you are saving money on shop-bought compost and fertilisers.

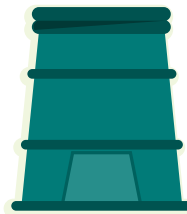
Using a homemade compost:

- improves soil quality
- maintains soil moisture levels
- neutralises the soil pH
- provides essential plant nutrients
- helps suppress plant disease.

It could be used for flowerbeds, enriching new borders, as mulch, around trees, to replenish potted plants, feed your lawn, in patio containers or herb and vegetable patches.

## Getting started

A container is needed to make compost, or somewhere you can pile up kitchen and garden waste into a heap.



Most people choose a composting bin to keep the pile tidy and warm. Order one for £15 by calling Council Connect: 01934 888 802

The ideal spot is on bare soil so insects and organisms can get into the rotting material and to allow for drainage. If possible, put the bin in a fairly sunny spot because warmth encourages the organisms which break down the materials.



## Feed your bin

Even quantities of green and brown kitchen and garden waste are needed.

Greens are young, wet materials that rot quickly, providing moisture and nitrogen. Browns are tougher, dry materials that are slower to rot. They provide fibre and carbon and add structure for air pockets to form.

Living organisms such as worms, fungi and bacteria feed on the waste to produce compost.

The secret to successful composting is providing the right balance of air, moisture, shelter, warmth and food.

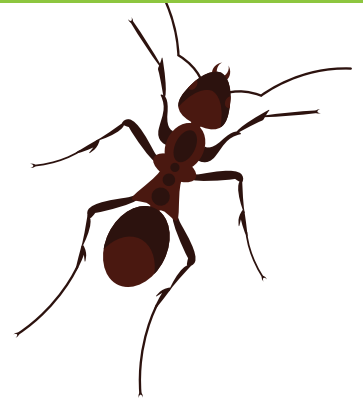
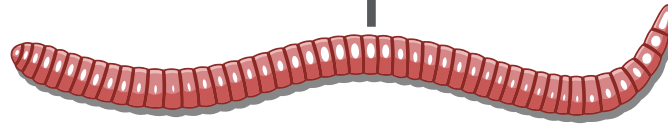
It can take between six months and a year to turn scraps into a moist, crumbly, dark brown substance.

Leave the compost to mature for a month or two before using and don't worry if it doesn't look exactly like shop-bought compost. Any larger bits that haven't rotted down can just be put back in the bin.



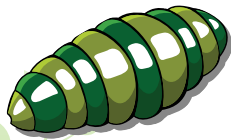


# and compost



## Top tips:

- put woody materials at the bottom to help with air circulation. Chop larger items into smaller pieces to help them decompose more quickly
- turn the compost regularly every few weeks. This mixes the ingredients and gets air into the mixture, which is vital for decomposition
- water is essential but try to make sure it doesn't get too wet. If your compost is looking too dry or soggy it's likely that you've put in too much of one type of material
- having the right mix of greens and browns will maintain the moisture and air balance, providing optimum conditions for decomposition.



## Yes please

Aim for a 50/50 balance of greens and browns.



### Greens

- fruit skins and vegetable peelings
- tea bags and coffee grounds
- grass cuttings
- plants and flowers
- weeds

### Browns



- egg shells
- hedge trimmings, prunings and leaves
- paper and cardboard
- natural fabrics and fibres
- feathers
- bedding and manure from vegetarian pets
- hay and straw
- sawdust and wood chippings
- wood ash

## No thanks

These items can encourage pests, create unpleasant smells, contain materials that are toxic to plants or don't break down into compost.



- cooked food
- meat, fish and bones
- dairy products
- bread
- droppings from meat eating animals/dog and cat litter
- nappies
- coal ash and soot
- diseased plants
- roots of persistent weeds, perennial weeds and weeds with seed heads
- hazardous or invasive plant species (Japanese Knotweed)
- synthetic fabrics
- glass, plastic and metal
- glossy magazines and heavily-inked paper/cardboard

# Help protect our heritage



*Removal of lead  
(photo copyright of Historic England)*

Protecting our heritage is important because it provides a connection to the past and means future generations can also enjoy and learn from it.

Heritage sites could be the built or natural environment and include listed buildings, scheduled monuments, world heritage sites, conservation areas, registered parks and gardens and more.

These places represent a time in history and reinforce a sense of identity but sometimes they are damaged forever by people who aren't aware of the consequences of their actions.

Heritage crime can range from graffiti and fly-tipping to off-road or vehicle damage, destruction of a scheduled monument, or stolen materials such as lead from church roofs.

People with metal detectors who trespass on land without a licence or the landowner's permission are also committing a crime.

There are many heritage sites in North Somerset and anyone interested in protecting them can join the voluntary national network Alliance to Reduce Crime Against Heritage (ARCH).



*Damage by off-road vehicles on  
Burrington Ham  
(photo courtesy of Mendip Hills  
AONB Unit)*



*Damage to Worlebury Camp –  
a scheduled monument*

The group launched in 2011 and is led by Historic England, the police and Crown Prosecution Service.

If you witness or suspect a heritage crime...

- call **101** to report a crime that does not require an emergency response
- call Crimestoppers on **0800 555 111** if you want to remain anonymous
- contact the police directly by phone or at your local station if you are happy to provide your name and address
- only call **999** in an emergency – if a crime is in progress or if there is a danger to life or property.

Discover the conservation areas, listed buildings, scheduled monuments, and historic parks and gardens in North Somerset at [www.n-somerset.gov.uk/heritagemap](http://www.n-somerset.gov.uk/heritagemap)  
For more information or to join ARCH, email [dm.archaeology@n-somerset.gov.uk](mailto:dm.archaeology@n-somerset.gov.uk)  
[www.historicengland.org.uk](http://www.historicengland.org.uk) • @HeritageCrime

## Medieval cross protected

Excavation work has revealed two extra layers of Congresbury's medieval cross.

The 600-year-old grade II\* listed scheduled monument was frequently clipped by traffic so North Somerset Council, Congresbury Parish Council and Historic England came together to consider how to prevent further damage.

A two-week excavation took place to find out how far underground the structure went, to help plan where bollards could be installed.

Local volunteers from Yatton, Congresbury, Claverham and Cleeve Archaeological Research Team worked with North Somerset Council's archaeologists and highways contractor Skanska to excavate a trench.

The work revealed the lower part of the bottom step and a big foundation stone beneath that.

As a temporary measure, three plastic barriers are keeping traffic away from the cross.





# Looking after your period property

Period properties remain popular with homebuyers who want character and charm but it can also be a big responsibility to care for them.

Towns in North Somerset boomed during the Victorian era following the arrival of the railway, with rows of terraced houses being built and large villas with sea views dotting hillside areas.

These older properties are architecturally significant and add to the character of a local area, as well as giving an insight into the way people lived.

If you own a period property, you are the custodian of it so it is your responsibility to look after it for future generations.

The best way of doing this is to carry out small scale, regular maintenance which will reduce the risk of expensive, large-scale repairs in the future.

Here's what to look out for...

## Windows

Check frames for loose window putty, bare timber or signs of rot.

These can usually be remedied by repainting and re-puttying the windows.

## Roofing

Roof tiles or slates can become broken or loose over time which means leaks can happen.

Check your roof a few times a year to see if there are any issues, such as fallen debris or damp marks appearing on ceilings.

## Keep gutters clear

Gutters need to be clear to function properly. If they become blocked or broken, water will spill out directly onto the building's fabric.

This can stain the exterior building material, especially render, and allow damp in.

## Maintaining retaining walls

If on-going maintenance of retaining walls isn't carried out then an insurance claim could be declined.

Re-pointing with traditional materials and regular inspections can catch problems early on.

Look out for plants growing in the mortar between the stone. Their roots can dig in and cause the mortar to crack, loosen and even fall out, compromising the strength of the wall.

If it appears to lean or bulge, there might be a bigger structural issue happening.

Visit [www.buildingconservation.com](http://www.buildingconservation.com) and search for 'lime pointing'.

Visit [www.historicengland.org.uk](http://www.historicengland.org.uk) and search for 'your home' for practical advice about maintaining, repairing or making changes to your property.

Some period properties are listed or in a conservation area so certain changes or larger-scale improvements may require listed building consent or planning permission.

Find out if you are in a conservation area at [www.n-somerset.gov.uk/planningmap](http://www.n-somerset.gov.uk/planningmap)



# Make sure your building work is certified

Homeowners or those looking to buy are being warned to check the property complies with building regulations.



Building work carried out on a house must comply with building regulations by law to ensure it is a safe place for people to live.

However, sometimes work is carried out without the owner obtaining the necessary approval.

North Somerset Council's building control team are now urging people to check the paperwork is in order because the resulting risks and liabilities are passed onto the new owner when a house is sold.

This means the new owner might have to do expensive repairs to make the house safe or prevent it from deteriorating.

If a building has been altered without the necessary permissions, insurance companies might also refuse to pay

out when a claim is made under a buildings insurance policy.

To combat this, solicitors often recommend that the seller or buyer take out an indemnity insurance policy.

While this is a quick option, it seldom covers the cost of any work needed to make the property safe or to fix faults found after moving in.

Jason Beale, from the council's building control team, said: "The best way to avoid these difficulties and to ensure a smooth transaction when a house is sold is to get building regulations approval as soon as possible.

"This can be applied for at any time, even if all the work has already been completed.

"One of our professional surveyors will visit your house to inspect the work and, if they are satisfied it complies, will issue a regularisation certificate."

If additional work is needed, the surveyor will advise what needs to be done to ensure the home is safe and energy efficient.

The regularisation certificate will give prospective buyers confidence that the building is safe and complies with requirements.



Homeowners can find out more about building regulations by reading an ebook at [www.extendingyourhome.com/northsomerset](http://www.extendingyourhome.com/northsomerset)

For independent advice about whether building regulations approval is needed for work already done to your property or that you plan to do, call 01275 884 550 • [www.northsomersetbuildingcontrol.com](http://www.northsomersetbuildingcontrol.com)





# Get vocal, be heard

Feedback is welcomed by North Somerset Council and it is an important part of the democratic process.

Residents at the receiving end of council services often have good ideas about how to make them better.

While the council can't act on every suggestion, it does make changes where possible.

## You said

I'm a regular user at Hutton Moor leisure centre in Weston-super-Mare and read with interest your plans to extend it. I think we need a better fitness gym and the studio space could be improved.



## We did

A recent survey of users at Hutton Moor leisure centre highlighted that a better fitness gym and improved studio space were top priorities.

The centre, which is run by Parkwood Leisure on behalf of the council, attracts more than 600,000 visits a year.

It currently has more than 3,000 gym members and the existing fitness facilities are too small to cope with demand.

In February the £2m extension plans were approved by councillors, which will create the capacity for about 800 additional members.

Plans include a two-storey extension at the rear of the existing building to provide a new fitness suite, three floodlit all-weather pitches, and two floodlit tennis courts on a grassed area next to Hutton Moor Road. The rugby

pitch will be moved to land at the west of the leisure centre.


One of the centre's three squash courts will be converted into a new reception for the gym area, and another will be converted into a fixed cycle workout room. One squash court will remain to meet a demand that has been declining for a number of years. The current unused bar area will be converted into a dedicated dance studio.

Work on the new facilities is likely to start in the spring.

This marks the first phase in a programme of investment at the leisure centre.

The second phase, which will include a refurbished reception area and new leisure pool, will be the subject of a separate planning application.

# Your views

 Send your items to  
Editor, North Somerset Life  
North Somerset Council  
Floor 1, Town Hall  
Weston-super-Mare, BS23 1UJ  
or email [editor@n-somerset.gov.uk](mailto:editor@n-somerset.gov.uk)

 @NorthSomersetC

 NorthSomersetCouncil

 NorthSomersetLife

Items submitted without a valid name and address will not be considered for publication. Please tell us if you do not want your details published. Due to space restrictions letters may be edited.

## Dear Editor,

I wish to offer thanks and congratulations for the wonderful service we have received from North Somerset Council staff while renewing the disabled person's parking badge for my mum.

I noticed her parking badge was due to expire at the end of the month so contacted the council for blue badge matters and was reassured by the person I spoke to that a renewal pack would be sent to my address within a few days.

It arrived as promised and we completed the form. I was very pleased to see that when we visited Mum later that month, her new badge had been issued.

Please pass on our thanks to the staff that handle these blue badge renewals on behalf of the council for their wonderful prompt service.

*Beverly Crowley, Bristol*

## Dear Editor,

With reference to keeping healthy in your January issue, I am hearing stories that, due to austerity, some people have been passing on their prescribed medicine 'left overs' to relatives or friends with 'similar' symptoms.

I'm hoping that you might mention how dangerous this can be. We are all different and the wrong medicine could be a severe problem.

*Brian Austin, Weston-super-Mare*

## Editor's response:

Thank you for your letter and for highlighting this issue. It is also important that people do not overstock their medication, as wasted medicines cost £1.2m a year locally.

Talk to your doctor or pharmacist if you stop taking your medicines, have any questions, or are receiving medicine you don't take.

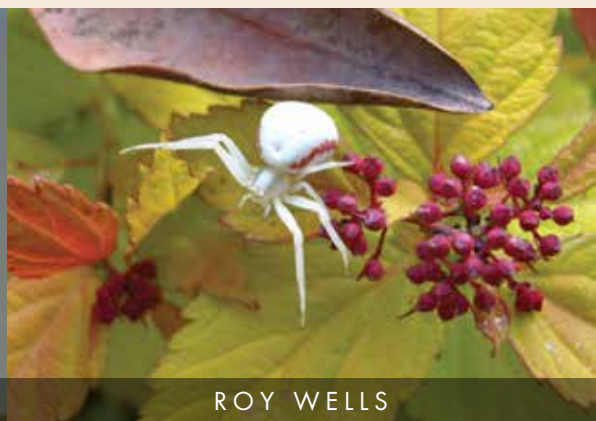
 North Somerset Life is on Instagram. Tag [#northsomersetlife](https://www.instagram.com/northsomersetlife) to share your photos



MIKE WATSON




KAREN SANCTO




ROY WELLS



Many topics are covered on Twitter and Facebook and last month these issues were raised.


 Why do pensioners have to pay full price for a green bin?

*It's an optional service so there are no reductions for anyone on a low income or on benefits either.*

 Why have a two person lane if not monitored #A370 Long Ashton

*The police are responsible for enforcing 2+ lane. We're installing traffic management on the*

*South Bristol Link road to help traffic flow along the A370.*

 Why are there temporary traffic lights outside the crematorium but no workmen or work being done? Really annoying!!

*We have instructed BT Openreach to clear the site. Thank you for bringing this to our attention.*



North Somerset Life is the award winning magazine for the people of North Somerset. Your copy should be delivered with your post unless you use Royal Mail's opt out service to block unaddressed mail.

You can download this issue and back issues from  
[www.n-somerset.gov.uk/nsl](http://www.n-somerset.gov.uk/nsl) or pick copies up from council buildings.

### Coming next issue:

- Cook2Learn proving popular
- Care Navigators point people in right direction

Sign up to *Life's* online edition and receive news straight into your inbox. Visit  
[www.northsomersetlife.co.uk](http://www.northsomersetlife.co.uk)

## Tide timetables for Weston-super-Mare

### Tide facts

Approximate high water times at:

Clevedon: 10 min

Portishead: 18 min

later than

Weston-super-Mare.

Weather conditions which differ from the average will have an effect on the differences between predicted and actual tide times.

Strong winds can hold the tide in or push the tide out. Air pressure can also cause fluctuations in predicted levels.

Tidal predictions for Weston-super-Mare have been computed by the Proudman Oceanographic Laboratory.

Copyright reserved.

[www.n-somerset.gov.uk/tidetimes](http://www.n-somerset.gov.uk/tidetimes)

### MARCH 2017

Date	High water		Low water		High water		Low water	
	Time	Height (M)	Time	Height (M)	Time	Height (M)	Time	Height (M)
	AM				PM			
1 Wed	08:35	12.65	02:16	0.55	20:53	12.49	14:39	0.49
2 Thu	09:15	12.46	02:56	0.66	21:34	12.13	15:18	0.71
3 Fri	09:56	11.93	03:34	0.95	22:14	11.49	15:56	1.08
4 Sat	10:39	11.17	04:10	1.32	22:58	10.70	16:35	1.51
5 Sun	11:30	10.34	04:55	1.76	23:52	9.94	17:24	1.98
6 Mon	-	-	05:54	2.24	12:35	9.63	18:33	2.47
7 Tue	01:08	9.41	07:19	2.67	13:57	9.35	20:10	2.69
8 Wed	02:34	9.44	08:55	2.54	15:24	9.70	21:31	2.30
9 Thu	04:00	10.09	10:11	1.96	16:39	10.53	22:40	1.62
10 Fri	05:05	10.99	11:11	1.26	17:35	11.36	23:31	0.98
11 Sat	05:57	11.70	11:56	0.77	18:22	11.91	-	-
12 Sun	06:40	12.10	00:13	0.60	19:02	12.19	12:36	0.56
13 Mon	07:18	12.29	00:51	0.48	19:39	12.30	13:12	0.55
14 Tue	07:54	12.33	01:27	0.51	20:13	12.26	13:45	0.65
15 Wed	08:28	12.20	01:59	0.63	20:46	12.01	14:16	0.82
16 Thu	08:59	11.85	02:27	0.83	21:16	11.53	14:41	1.05
17 Fri	09:27	11.29	02:54	1.11	21:43	10.87	15:06	1.35
18 Sat	09:55	10.58	03:18	1.44	22:10	10.13	15:32	1.69
19 Sun	10:23	9.83	03:48	1.84	22:39	9.40	16:03	2.10
20 Mon	10:58	9.12	04:26	2.29	23:18	8.74	16:45	2.56
21 Tue	11:49	8.51	05:14	2.79	-	-	17:41	3.04
22 Wed	00:28	8.24	06:28	3.24	13:17	8.20	19:10	3.42
23 Thu	02:23	8.41	08:39	3.19	15:01	8.72	21:15	2.97
24 Fri	03:39	9.34	09:46	2.37	16:09	9.73	22:08	2.16
25 Sat	04:37	10.41	10:35	1.67	17:02	10.75	22:59	1.54
26 Sun	06:26	11.32	-	-	18:49	11.55	12:25	1.17
27 Mon	07:10	11.99	00:48	1.08	19:32	12.14	13:12	0.78
28 Tue	07:52	12.47	01:32	0.72	20:13	12.56	13:55	0.48
29 Wed	08:34	12.79	02:15	0.46	20:53	12.80	14:37	0.30
30 Thu	09:14	12.90	02:56	0.35	21:33	12.77	15:18	0.31
31 Fri	09:56	12.69	03:37	0.45	22:14	12.41	15:58	0.55

### APRIL 2017

Date	High water		Low water		High water		Low water	
	Time	Height (M)	Time	Height (M)	Time	Height (M)	Time	Height (M)
	AM				PM			
1 Sat	10:39	12.11	04:15	0.75	22:56	11.71	16:35	0.96
2 Sun	11:25	11.27	04:52	1.18	23:42	10.86	17:14	1.44
3 Mon	-	-	05:36	1.67	12:17	10.36	18:04	1.96
4 Tue	00:39	10.02	06:36	2.19	13:21	9.61	19:12	2.47
5 Wed	01:51	9.46	08:01	2.61	14:40	9.31	20:49	2.70
6 Thu	03:16	9.46	09:39	2.49	16:07	9.65	22:13	2.30
7 Fri	04:41	10.07	10:51	1.93	17:20	10.46	23:19	1.66
8 Sat	05:46	10.91	11:50	1.31	18:14	11.24	-	-
9 Sun	06:35	11.52	00:11	1.09	19:00	11.72	12:34	0.92
10 Mon	07:17	11.83	00:51	0.80	19:39	11.93	13:12	0.79
11 Tue	07:54	11.94	01:26	0.74	20:13	12.02	13:45	0.82
12 Wed	08:28	11.98	01:59	0.77	20:46	12.03	14:16	0.88
13 Thu	08:59	11.93	02:28	0.81	21:16	11.89	14:43	0.95
14 Fri	09:29	11.71	02:56	0.89	21:44	11.56	15:09	1.07
15 Sat	09:57	11.28	03:22	1.06	22:12	11.02	15:33	1.29
16 Sun	10:25	10.68	03:47	1.34	22:40	10.36	16:00	1.60
17 Mon	10:54	10.02	04:17	1.71	23:09	9.70	16:30	1.97
18 Tue	11:29	9.39	04:52	2.12	23:46	9.11	17:07	2.36
19 Wed	-	-	05:39	2.53	12:16	8.85	18:02	2.77
20 Thu	00:47	8.64	06:46	2.92	13:27	8.53	19:22	3.12
21 Fri	02:21	8.58	08:28	3.06	15:08	8.78	21:15	3.04
22 Sat	03:54	9.30	10:05	2.50	16:27	9.68	22:31	2.35
23 Sun	04:59	10.34	11:01	1.81	17:25	10.70	23:26	1.72
24 Mon	05:52	11.29	11:56	1.31	18:17	11.57	-	-
25 Tue	06:41	12.02	00:22	1.23	19:04	12.20	12:47	0.88
26 Wed	07:27	12.51	01:10	0.81	19:48	12.63	13:33	0.54
27 Thu	08:11	12.82	01:53	0.50	20:31	12.86	14:16	0.34
28 Fri	08:55	12.90	02:35	0.36	21:13	12.84	14:57	0.33
29 Sat	09:39	12.69	03:16	0.43	21:57	12.51	15:37	0.55
30 Sun	10:24	12.15	03:57	0.71	22:43	11.86	16:17	0.94

[www.n-somerset.gov.uk](http://www.n-somerset.gov.uk)

Report it. Request it. Pay for it.  
[www.n-somerset.gov.uk/connect](http://www.n-somerset.gov.uk/connect)

8am – 6pm Mon – Fri

**Council Connect:** for all streets and open spaces enquiries:  
01934 888 802

**Care Connect:** for all social services enquiries:  
01275 888 801  
[care.connect@n-somerset.gov.uk](mailto:care.connect@n-somerset.gov.uk)

**Main switchboard:**  
01934 888 888

**Emergency (out of hours):**  
01934 622 669

North Somerset Council  
Town Hall  
Weston-super-Mare BS23 1UJ



# OPEN EVENT

**14 MARCH 2017**

**6 - 8PM | ALL COURSES | ALL CAMPUSES**

Come and look around, meet staff and find out about what we offer.

For more details visit [www.weston.ac.uk/openevents](http://www.weston.ac.uk/openevents) or call 01934 411 411